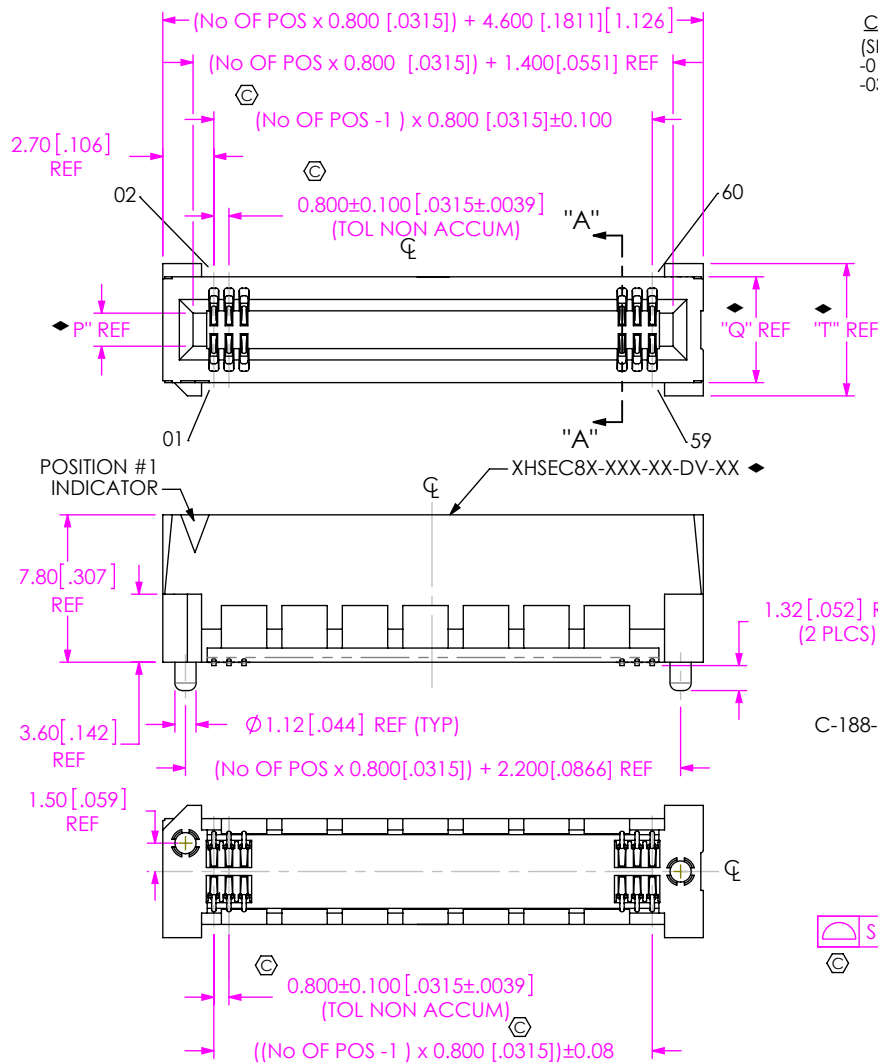


DO NOT  
SCALE FROM  
THIS PRINTDESIGNED & DIMENSIONED  
IN MILLIMETERS  
(INCHES FOR REFERENCE ONLY)

## NOTES:

1. © REPRESENTS A CRITICAL DIMENSION.
2. BURR ALLOWANCE: 0.04[.0015] MAX.
3. MINIMUM PUSHOUT FORCE: 2.2 NEWTONS.
4. ALL TAIL TO TAIL DIMENSIONS MEASURED TIP TO TIP.
5. ASSEMBLIES TO BE PACKAGED IN TRAYS, UNLESS -TR IS SPECIFIED.
6. NOTE DELETED.
7. MATING EDGE CARD THICKNESS TOLERANCE TO BE  $\pm 0.15$  [.006] OF NOMINAL.
8. NOTE DELETED.
9. NOTE DELETED.
10. MATING CARD MUST HAVE LEAD-IN. SEE SAMTEC FOOTPRINT FOR SPECIFICATIONS.
11. L, L2, & BL IS NOT APPLICABLE FOR GUIDE RAIL TYPE USE. GR NOT APPLICABLE FOR L, L2, OR BL TYPE USE.
12. CORNER VOIDS AT VENDOR DISCRETION, AND MAY OR MAY NOT BE PRESENT.
13. MEASURE DIMENSION WITH LATCH IN LOCKED, PERPENDICULAR POSITION.
14. VOID WIDTH, LOCATION, AND FREQUENCY TO BE AT VENDORS DISCRETION.

## HSEC8-1XXX-XX-XX-DV-X-XX

## NO OF POSITIONS (PER ROW)

-10, -20, -30 (SEE FIG 1)  
 ■ -09, -13, -25, -37, -49, -60, -70, -80, -90, -100 (SEE FIG 2, SHT 2)

## CARD THICKNESS

(SEE TABLE 9, SHT 3)  
 -01: 1.57 [.062] CARD  
 -03: 2.36 [.093] CARD  
 (10-100 POS, MULTIPLES OF 10 ONLY)  
 (-K & -TR ONLY FOR OPTION 2)  
 (USE RHSEC8-XXX-03-DV-XX)  
 (SEE NOTE 7 & 10)

## PLATING SPECIFICATION

-SM: 30μ" SELECTIVE GOLD IN CONTACT AREA, MATTE TIN ON TAIL  
 -H: 30μ" HEAVY GOLD IN CONTACT AREA, 3μ" GOLD TAIL  
 -S: 30μ" SELECTIVE GOLD IN CONTACT AREA, MATTE TIN ON TAIL  
 -L: 10μ" LIGHT SELECTIVE GOLD IN CONTACT AREA, MATTE TIN ON TAIL

## ROW SPECIFICATION

-DV: DOUBLE VERTICAL

\*\* = AVAILABLE ONLY WITH -01 CARD THICKNESS

■ = AVAILABLE ONLY WITH END OPTIONS -BL, -WT, & -L2

## OPTION 2

\*\*PE: PASS THROUGH (SHT 7, FIG 7)  
 (10, 13, & 20 POS ONLY)  
 (-A OPTION ONLY)  
 (NOT AVAILABLE WITH ANY OTHER OPTION  
 2, EXCEPT -K AND/OR -TR)  
 \*\*BL: BOARD LOCK (SHT 5, FIG 5) (SEE NOTE 11)  
 \*\*GR: GUIDE RAILS (SHT 6, FIG 6)  
 (10-60 POS, MULTIPLES OF 10 ONLY)  
 (SEE NOTE 11) (-TR PACKAGING ONLY)  
 -WT: WELD TAB (SHT 7, FIG 8)  
 (-A OPTION ONLY)  
 \*\*L: LATCHING (SHT 4, FIG 4)  
 (13, 25, 37, & 49 POS ONLY) (SEE NOTE 11)  
 \*\*L2: ECDP LATCHING (SHT 8, FIG 9)  
 (09, 13, 25, & 49 POS ONLY) (SEE NOTE 11)  
 -K: POLYIMIDE FILM PAD (SEE SHT 2, FIG 3)  
 -TR: TAPE & REEL  
 (09 THRU 70 POS ONLY)  
 (LEAVE BLANK FOR TRAY)

## OPTION 1

(LEAVE BLANK FOR NO ALIGNMENT PIN,  
 USE XHSEC8-XXX-01-DV-LC, NOT  
 AVAILABLE FOR CARD THICKNESS -02 & -03  
 SEE FIG 10, SHT 3)  
 -A: ALIGNMENT PIN  
 (USE XHSEC8X-XXX-XX-DV-A)

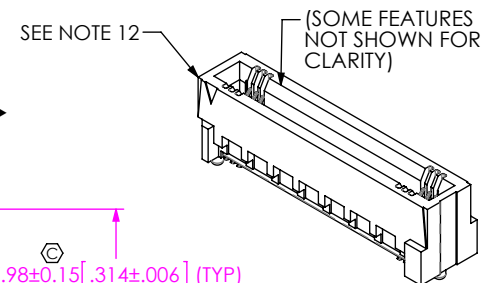
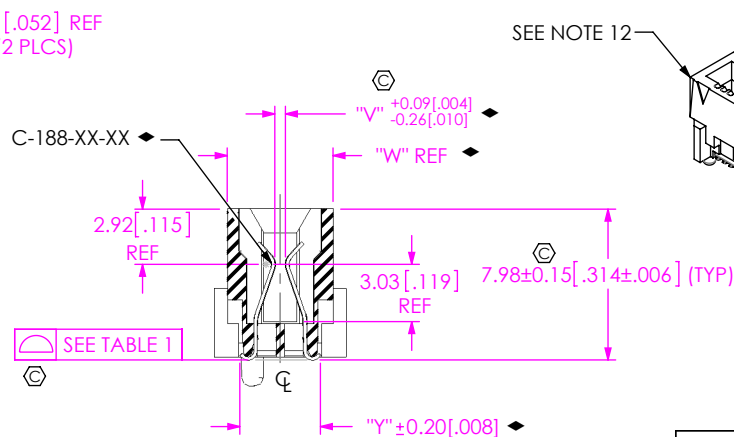


TABLE 1

| No OF POS     | COPLANARITY   |
|---------------|---------------|
| -10 THRU -60  | 0.102 [.0040] |
| -70 THRU -100 | 0.152 [.0060] |

F:\DWG\MISC\Mktg\HSEC8-1XXX-XX-XX-DV-X-XX-MKT.SLDDRW

UNLESS OTHERWISE SPECIFIED,  
 DIMENSIONS ARE IN MILLIMETERS.

## TOLERANCES ARE:

DECIMALS ANGLES  
 .X:  $\pm .3$  [.01]  
 .XX:  $\pm .13$  [.005]  
 .XXX:  $\pm .051$  [.0020]

## PROPRIETARY NOTE

THIS DOCUMENT CONTAINS CONFIDENTIAL AND  
 PROPRIETARY INFORMATION AND ALL DESIGN,  
 MANUFACTURING, REPRODUCTION, USE, PATENT RIGHTS  
 AND SALES RIGHTS ARE EXPRESSLY RESERVED BY SAMTEC,  
 INC. THIS DOCUMENT SHALL NOT BE DISCLOSED, IN WHOLE  
 OR PART, TO ANY UNAUTHORIZED PERSON OR ENTITY NOR  
 REPRODUCED, TRANSFERRED OR INCORPORATED IN ANY  
 OTHER PROJECT IN ANY MANNER WITHOUT THE EXPRESS  
 WRITTEN CONSENT OF SAMTEC, INC.

MATERIAL: DO NOT SCALE DRAWING SHEET SCALE: 2.5:1  
 INSULATOR: LCP,  
 COLOR: -01 CARD THICKNESS BLACK,  
 -02 & -03 CARD THICKNESS NATURAL  
 CONTACT: BeCu

**samtec**

520 PARK EAST BLVD, NEW ALBANY, IN 47150  
 PHONE: 812-944-6733 FAX: 812-948-5047  
 e-Mail: info@SAMTEC.com code: 55322

DESCRIPTION:  
 0.8mm HIGH SPEED EDGE CARD ASSEMBLY

DWG. NO.  
**HSEC8-1XXX-XX-XX-DV-X-XX**

BY: BRATCHER 01/24/03 SHEET 1 OF 8

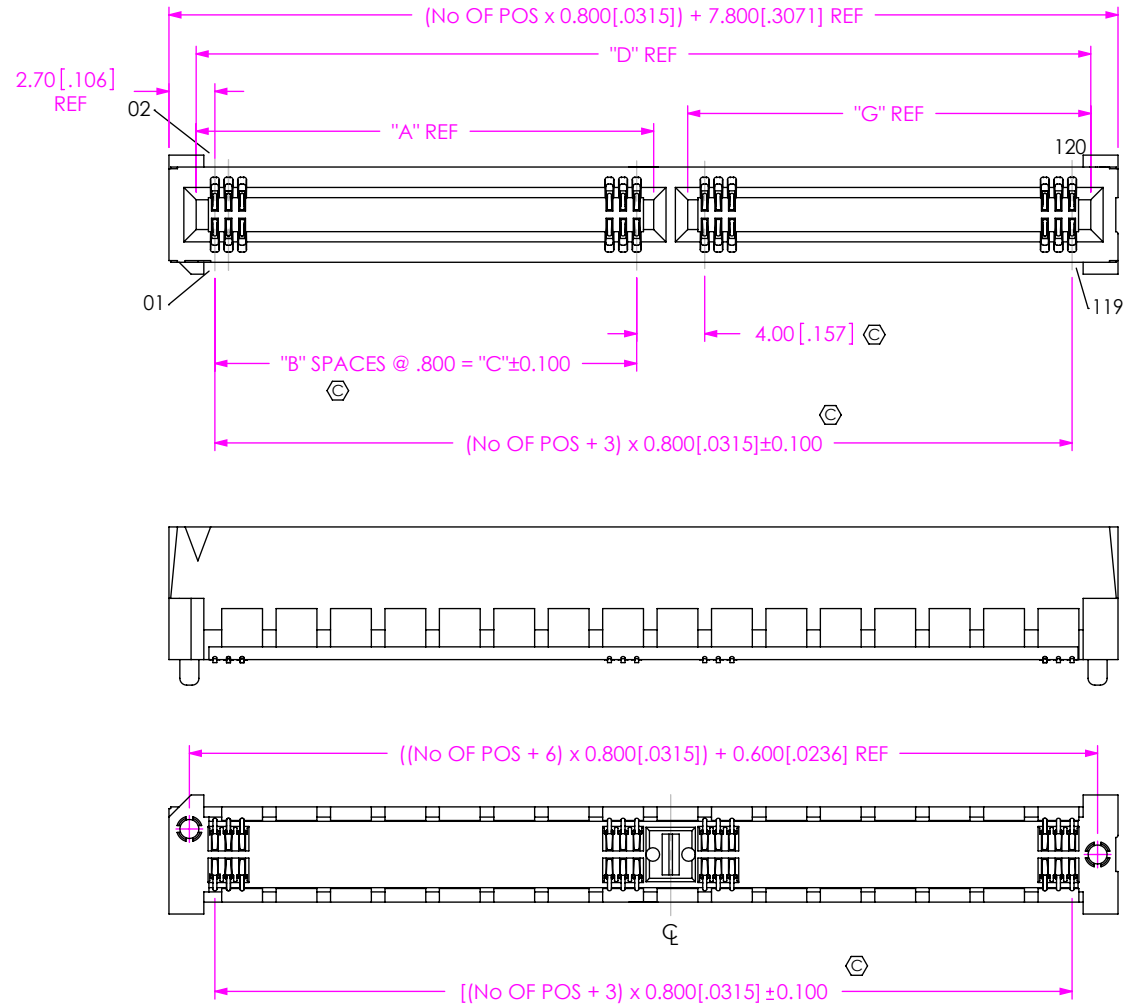
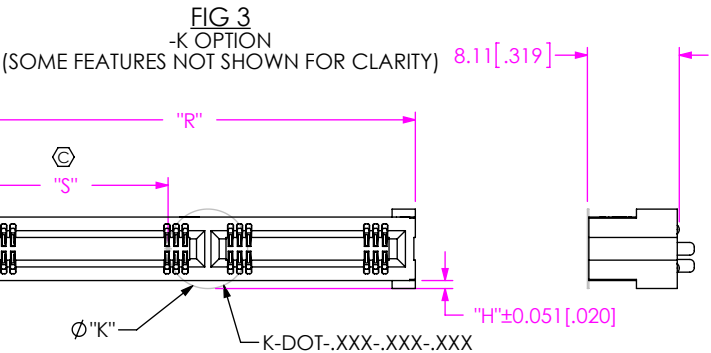


FIG 2  
FOR POSITIONS ■\*\*-09, \*\*-13, \*\*-25, \*\*-37,  
-40, \*\*-49, -50, -60, -70, -80, -90, -100  
HSEC8-160-01-XX-DV-A SHOWN  
(DIFFERENT AS SHOWN, OTHERWISE SAME AS FIG 1)  
(SOME FEATURES NOT SHOWN FOR CLARITY)  
(\*\* = AVAILABLE ONLY WITH  
-01 CARD THICKNESS)

| TABLE 2   |               |     |                |               |               |
|-----------|---------------|-----|----------------|---------------|---------------|
| No OF POS | "A"           | "B" | "C"            | "D"           | "G"           |
| ■**-09    | 4.50 [.177]   | 3   | 2.400 [.0945]  | 11.80 [.465]  | 5.30 [.209]   |
| **13      | 6.10 [.240]   | 5   | 4.000 [.1575]  | 15.00 [.591]  | 6.90 [.272]   |
| **25      | 6.10 [.240]   | 5   | 4.000 [.1575]  | 24.60 [.969]  | 16.50 [.650]  |
| **37      | 18.10 [.713]  | 20  | 16.000 [.6299] | 34.20 [1.346] | 14.10 [.555]  |
| -40       | 18.90 [.744]  | 21  | 16.800 [.6614] | 36.60 [1.441] | 15.70 [.618]  |
| **49      | 22.90 [.902]  | 26  | 20.800 [.8189] | 43.80 [1.724] | 18.90 [.744]  |
| -50       | 22.90 [.902]  | 26  | 20.800 [.8189] | 44.60 [1.756] | 19.70 [.776]  |
| -60       | 26.90 [1.059] | 31  | 24.800 [.9764] | 52.60 [2.071] | 23.70 [.933]  |
| -70       | 26.90 [1.059] | 31  | 24.800 [.9764] | 60.60 [2.386] | 31.70 [1.248] |
| -80       | 26.90 [1.059] | 31  | 24.800 [.9764] | 68.60 [2.701] | 39.70 [1.563] |
| -90       | 26.90 [1.059] | 31  | 24.800 [.9764] | 76.60 [3.016] | 47.70 [1.878] |
| -100      | 26.90 [1.059] | 31  | 24.800 [.9764] | 84.60 [3.331] | 55.70 [2.193] |

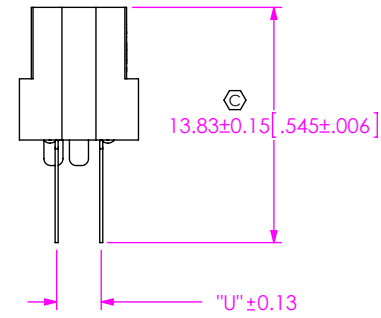
\*\* = AVAILABLE ONLY WITH -01 CARD THICKNESS  
■ = AVAILABLE ONLY WITH END OPTIONS -BL, -WT & -L2



| TABLE 3  |                                   |  |                                     |
|----------|-----------------------------------|--|-------------------------------------|
| OPTION 2 | No OF POS                         | "R"  | "S"                                 |
| NONE     | -10 THRU -30                      | (No OF POS x 0.800 [.0315]) + 4.600 [.1811] REF  | ((("R" - "K") / 2) + /-0.51 [.020]) |
|          | -09, -13, -25, -37, -40 THRU -100 | (No OF POS x 0.800 [.0315]) + 7.800 [.3071] REF  |                                     |
| -WT      | -10 THRU -30                      | (No OF POS x 0.800 [.0315]) + 9.200 [.3622] REF  |                                     |
|          | -13, -25, -37, -40 THRU -100      | (No OF POS x 0.800 [.0315]) + 12.400 [.4882] REF |                                     |
| **L      | -13, -25, -37, & -49              | (No OF POS x 0.800 [.0315]) + 18.400 [.7244] REF |                                     |
| **BL     | -10 THRU -30                      | (No OF POS x 0.800 [.0315]) + 15.850 [.6240] REF |                                     |
|          | -09, -13, -25, -37, -40 THRU -100 | (No OF POS x 0.800 [.0315]) + 19.050 [.7500] REF |                                     |
| **PE     | -10, -13, & -20                   | (No OF POS x 0.800 [.0315]) + 7.000 [.2756] REF  |                                     |
| **GR     | -10, -20, -30                     | (No OF POS x 0.800 [.0315]) + 4.600 [.1811] REF  |                                     |
|          | -40, -50, -60                     | (No OF POS x 0.800 [.0315]) + 7.800 [.3071] REF  |                                     |
| **L2     | -09, -13, -25, -49                | (No OF POS x 0.800 [.0315]) + 11.800 [.4646] REF |                                     |

\*\* = AVAILABLE ONLY WITH -01 CARD THICKNESS

| TABLE 6        |                      |             |             |               |
|----------------|----------------------|-------------|-------------|---------------|
| CARD THICKNESS | K-DOT-.XXX-.XXX-.XXX | "K"         | "U"         | "H"           |
| -01            | K-DOT-.276-.375-.005 | 7.01 [.276] | 2.61 [.103] | 0.705 [.0278] |
| -03            | K-DOT-.246-.375-.005 | 6.25 [.246] | 3.40 [.134] | 0.070 [.0027] |



\* PROPRIETARY NOTE \*

THIS DOCUMENT CONTAINS CONFIDENTIAL AND PROPRIETARY INFORMATION AND ALL DESIGN, MANUFACTURING, REPRODUCTION, USE, PATENT RIGHTS AND SALES RIGHTS ARE EXPRESSLY RESERVED BY SAMTEC, INC. THIS DOCUMENT SHALL NOT BE DISCLOSED, IN WHOLE OR PART, TO ANY UNAUTHORIZED PERSON OR ENTITY NOR REPRODUCED, TRANSFERRED OR INCORPORATED IN ANY OTHER PROJECT IN ANY MANNER WITHOUT THE EXPRESS WRITTEN CONSENT OF SAMTEC, INC.

DO NOT SCALE DRAWING

SHEET SCALE: 2.25:1



520 PARK EAST BLVD, NEW ALBANY, IN 47150  
PHONE: 812-944-6733 FAX: 812-948-5047  
e-Mail: info@SAMTEC.com code: 55322

DESCRIPTION:  
0.8mm HIGH SPEED EDGE CARD ASSEMBLY

DWG. NO.  
HSEC8-1XXX-XX-XX-DV-X-XX

BY: BRATCHER 01/24/03 SHEET 2 OF 8

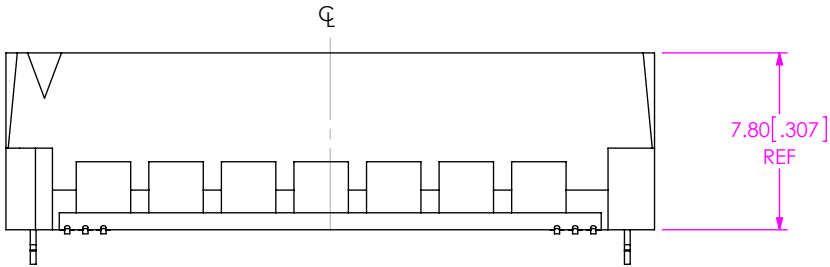


FIG 10  
 \*\*NON-ALIGNMENT PIN OPTION  
 HSEC8-130-01-XX-DV SHOWN  
 (DIFFERENT AS SHOWN, OTHERWISE SAME AS FIG 1)  
 (\*\* = AVAILABLE ONLY WITH -01 CARD THICKNESS)  
 (SOME FEATURES NOT SHOWN FOR CLARITY)

| TABLE 9 |          |                        |            |            |            |            |            |            |            |
|---------|----------|------------------------|------------|------------|------------|------------|------------|------------|------------|
| CARD    | OPTION 2 | BODY                   | CONTACT    | "P"        | "Q"        | "T"        | "V"        | "W"        | "Y"        |
| -01     | -L       | RHSEC8-XXX-01-DV-XX-L  | C-188-02-X | 1.75[.069] | 5.60[.220] | 7.00[.276] | 0.56[.022] | 5.60[.220] | 4.26[.168] |
|         | -L2      | RHSEC8-XXX-01-DV-XX-L2 | C-188-02-X |            |            |            |            | 5.60[.220] |            |
|         | -BL      | RHSEC8-XXX-01-DV-XX-BL | C-188-02-X |            |            |            |            | 5.60[.220] |            |
|         | -GR      | RHSEC8-XXX-01-DV-XX-GR | C-188-02-X |            |            |            |            | 5.60[.220] |            |
|         | -PE      | HSEC8-XXX-01-DV-A-PE   | C-188-01-X |            |            |            |            | 4.60[.180] |            |
|         | -WT      | RHSEC8-XXX-01-DV-A-WT  | C-188-02-X |            |            |            |            | 5.60[.220] |            |
|         | NONE     | RHSEC8-XXX-01-DV-XX    | C-188-02-X |            |            |            |            | 5.60[.220] |            |
| -03     | NONE     | RHSEC8-XXX-03-DV-A     | C-188-02-X | 2.54[.100] | 6.39[.252] | 7.79[.307] | 1.35[.053] | 6.39[.252] | 5.05[.199] |
|         | -WT      | RHSEC8-XXX-03-DV-A-WT  | C-188-02-X |            |            |            |            |            |            |

\* PROPRIETARY NOTE \*  
 THIS DOCUMENT CONTAINS CONFIDENTIAL AND PROPRIETARY INFORMATION AND ALL DESIGN, MANUFACTURING, REPRODUCTION, USE, PATENT RIGHTS AND SALES RIGHTS ARE EXPRESSLY RESERVED BY SAMTEC, INC. THIS DOCUMENT SHALL NOT BE DISCLOSED, IN WHOLE OR PART, TO ANY UNAUTHORIZED PERSON OR ENTITY NOR REPRODUCED, TRANSFERRED OR INCORPORATED IN ANY OTHER PROJECT IN ANY MANNER WITHOUT THE EXPRESS WRITTEN CONSENT OF SAMTEC, INC.

DO NOT SCALE DRAWING

SHEET SCALE: 2:1

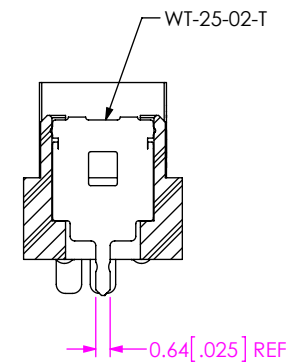
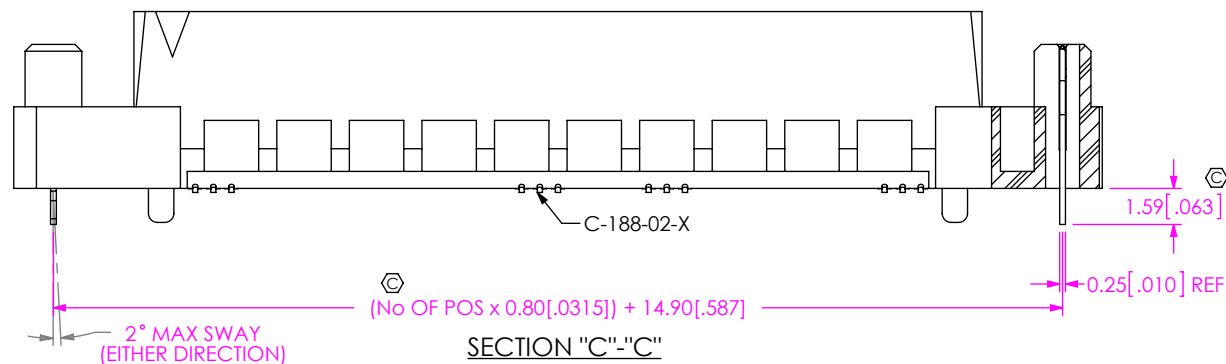
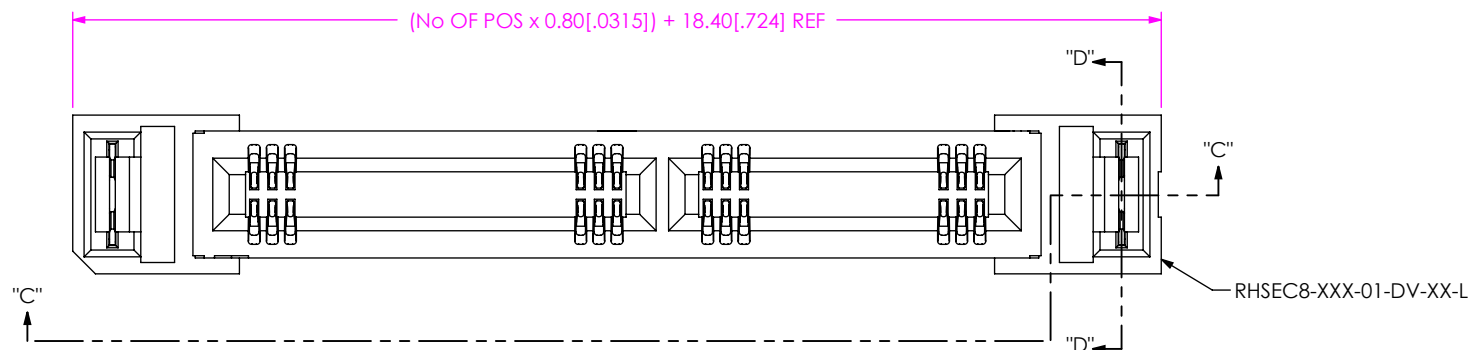


520 PARK EAST BLVD, NEW ALBANY, IN 47150  
 PHONE: 812-944-6733 FAX: 812-948-5047  
 e-Mail info@SAMTEC.com code 55322

DESCRIPTION:  
 0.8mm HIGH SPEED EDGE CARD ASSEMBLY

DWG. NO.  
 HSEC8-1XXX-XX-XX-DV-X-XX

BY: BRATCHER 01/24/03 SHEET 3 OF 8



SECTION "D"- "D"

FIG 4  
 \*\*L: LATCHING OPTION  
 HSEC8-137-01-XX-DV-A-L SHOWN  
 AVAILABLE IN -13, -25, -37 & -49 POSITIONS ONLY  
 (NOT AVAILABLE FOR -GR TYPE USE)  
 (DIFFERENT AS SHOWN, OTHERWISE SAME AS FIG 2)  
 (SOME FEATURES NOT SHOWN FOR CLARITY)  
 (\*\* = AVAILABLE ONLY WITH -01 CARD THICKNESS)

**PROPRIETARY NOTE**  
 THIS DOCUMENT CONTAINS CONFIDENTIAL AND PROPRIETARY INFORMATION AND ALL DESIGN, MANUFACTURING, REPRODUCTION, USE, PATENT RIGHTS AND SALES RIGHTS ARE EXPRESSLY RESERVED BY SAMTEC, INC. THIS DOCUMENT SHALL NOT BE DISCLOSED, IN WHOLE OR PART, TO ANY UNAUTHORIZED PERSON OR ENTITY NOR REPRODUCED, TRANSFERRED OR INCORPORATED IN ANY OTHER PROJECT IN ANY MANNER WITHOUT THE EXPRESS WRITTEN CONSENT OF SAMTEC, INC.

DO NOT SCALE DRAWING

SHEET SCALE: 3:1

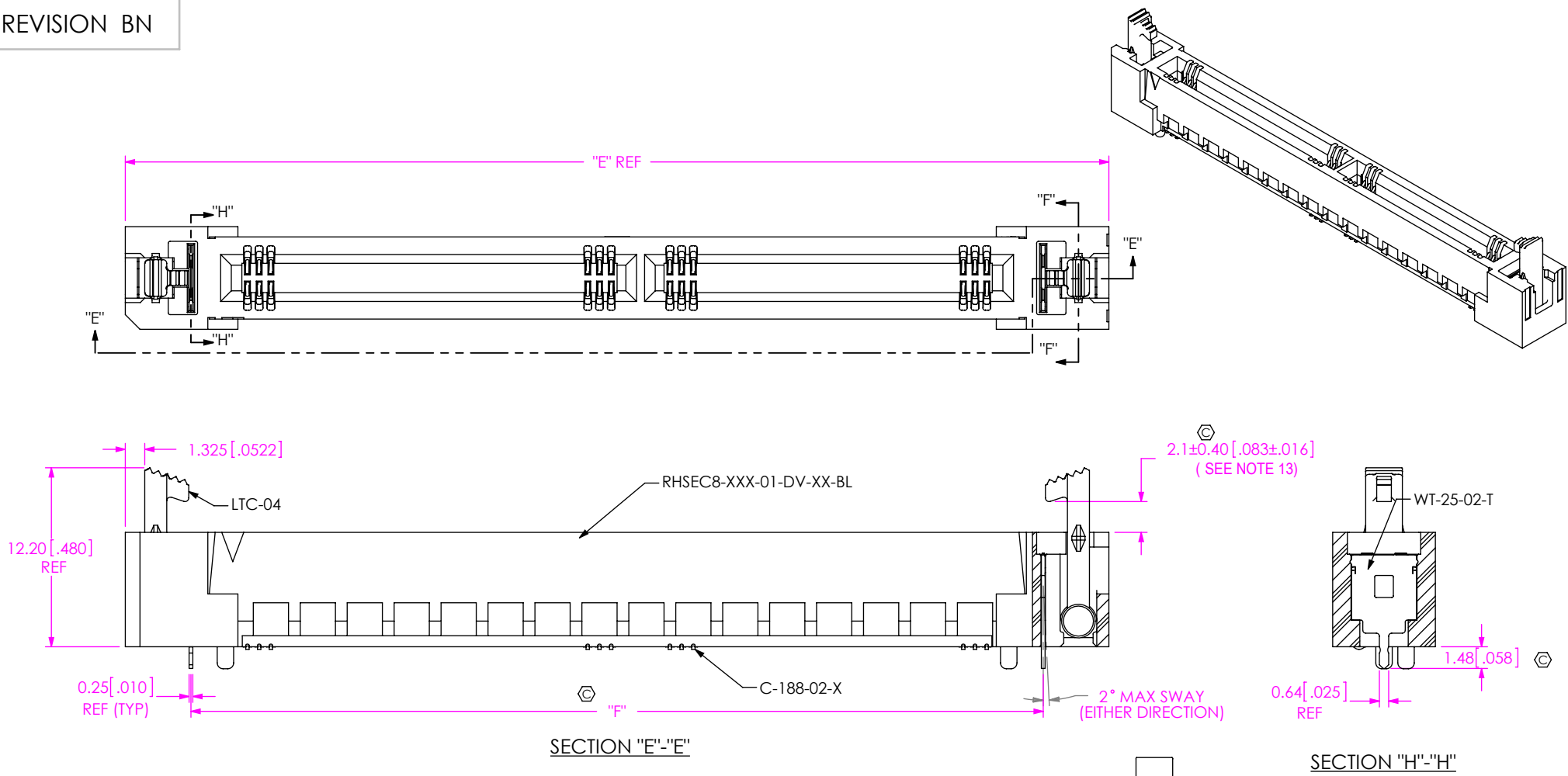
**samtec**

520 PARK EAST BLVD, NEW ALBANY, IN 47150  
 PHONE: 812-944-6733 FAX: 812-948-5047  
 e-Mail: info@SAMTEC.com code: 55322

DESCRIPTION:  
 0.8mm HIGH SPEED EDGE CARD ASSEMBLY

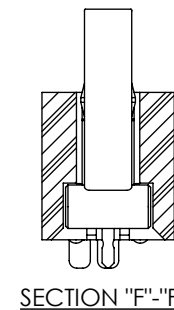
DWG. NO.  
**HSEC8-1XXX-XX-XX-DV-X-XX**

BY: BRATCHER 01/24/03 SHEET 4 OF 8



SECTION "E"-"E"

SECTION "H"-"H"



| TABLE 4         |               |               |
|-----------------|---------------|---------------|
| No OF POSITIONS | "E"           | "F"           |
| -09             | 26.25 [1.033] | 17.30 [0.681] |
| -10             | 23.85 [0.939] | 14.90 [0.587] |
| -13             | 29.45 [1.159] | 20.50 [0.807] |
| -20             | 31.85 [1.254] | 22.90 [0.902] |
| -25             | 39.05 [1.537] | 30.10 [1.185] |
| -30             | 39.85 [1.569] | 30.90 [1.217] |
| -37             | 48.65 [1.915] | 39.70 [1.563] |
| -40             | 51.05 [2.010] | 42.10 [1.657] |
| -49             | 58.25 [2.293] | 49.30 [1.941] |
| -50             | 59.05 [2.325] | 50.10 [1.972] |
| -60             | 67.05 [2.640] | 58.10 [2.287] |
| -70             | 75.05 [2.955] | 66.10 [2.602] |
| -80             | 83.05 [3.270] | 74.10 [2.917] |
| -90             | 91.05 [3.585] | 82.10 [3.232] |
| -100            | 99.05 [3.900] | 90.10 [3.547] |

FIG 5

\*\* -BL: BOARD LOCK OPTION  
 HSEC8-160-01-XX-DV-A-BL SHOWN  
 (NOT AVAILABLE FOR -GR TYPE USE)  
 (FOR -09, -13, -25, 37, -40, -49, -50, -60, -70, -80, -90 & -100  
 POSITIONS DIFFERENT AS SHOWN, OTHERWISE SAME AS FIG 2)  
 (FOR -10, -20 & -30 POSITIONS DIFFERENT AS SHOWN,  
 OTHERWISE SAME AS FIG 1)  
 (\*\* = AVAILABLE ONLY WITH -01 CARD THICKNESS)  
 (SOME FEATURES NOT SHOWN FOR CLARITY)  
 (AVAILABLE IN ALL POSITIONS)

**PROPRIETARY NOTE**  
 THIS DOCUMENT CONTAINS CONFIDENTIAL AND  
 PROPRIETARY INFORMATION AND ALL DESIGN,  
 MANUFACTURING, REPRODUCTION, USE, PATENT RIGHTS  
 AND SALES RIGHTS ARE EXPRESSLY RESERVED BY SAMTEC,  
 INC. THIS DOCUMENT SHALL NOT BE DISCLOSED, IN WHOLE  
 OR PART, TO ANY UNAUTHORIZED PERSON OR ENTITY NOR  
 REPRODUCED, TRANSFERRED OR INCORPORATED IN ANY  
 OTHER PROJECT IN ANY MANNER WITHOUT THE EXPRESS  
 WRITTEN CONSENT OF SAMTEC, INC.

DO NOT SCALE DRAWING

SHEET SCALE: 2.5:1

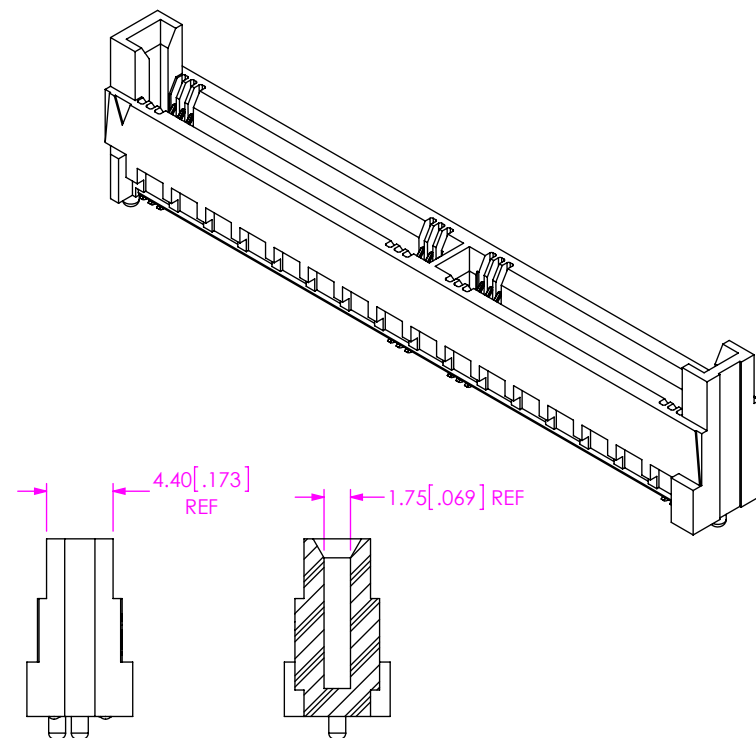
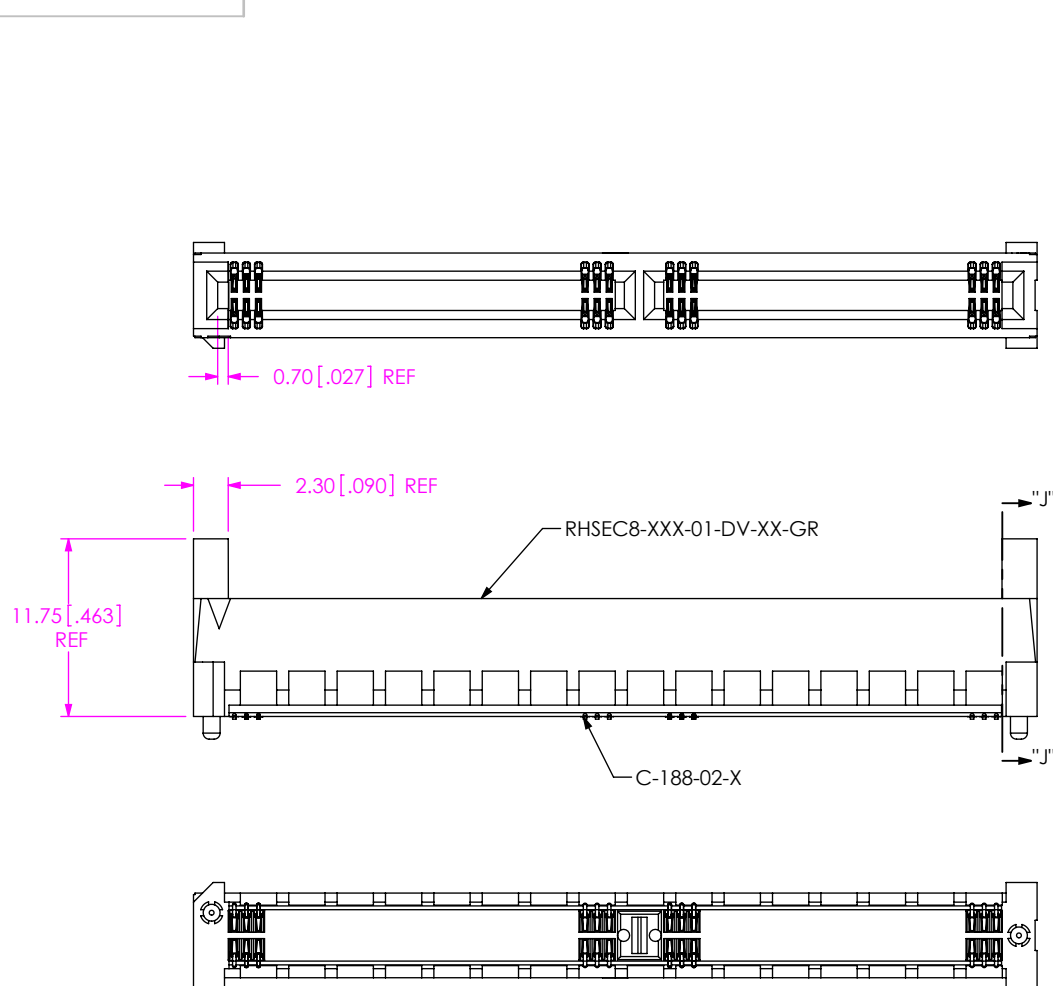
**samtec**

520 PARK EAST BLVD, NEW ALBANY, IN 47150  
 PHONE: 812-944-6733 FAX: 812-948-5047  
 e-Mail: info@SAMTEC.com code: 55322

DESCRIPTION:  
 0.8mm HIGH SPEED EDGE CARD ASSEMBLY

DWG. NO.  
**HSEC8-1XXX-XX-XX-DV-X-XX**

BY: BRATCHER 01/24/03 SHEET 5 OF 8



SECTION "J"-"J"

FIG 6  
 \*\*GR: GUIDE RAILS OPTION  
 HSEC8-160-01-XX-DV-A-GR SHOWN  
 AVAILABLE IN -10, -20, -30, -40, -50, & -60 POSITIONS ONLY  
 (NOT AVAILABLE FOR -L; -BL TYPE USE)  
 (DIFFERENT AS SHOWN, OTHERWISE SAME AS FIG 2)  
 (SOME FEATURES NOT SHOWN FOR CLARITY)  
 (\*\* = AVAILABLE ONLY WITH -01 CARD THICKNESS)

PROPRIETARY NOTE  
 THIS DOCUMENT CONTAINS CONFIDENTIAL AND  
 PROPRIETARY INFORMATION AND ALL DESIGN,  
 MANUFACTURING, REPRODUCTION, USE, PATENT RIGHTS  
 AND SALES RIGHTS ARE EXPRESSLY RESERVED BY SAMTEC,  
 INC. THIS DOCUMENT SHALL NOT BE DISCLOSED, IN WHOLE  
 OR PART, TO ANY UNAUTHORIZED PERSON OR ENTITY NOR  
 REPRODUCED, TRANSFERRED OR INCORPORATED IN ANY  
 OTHER PROJECT IN ANY MANNER WITHOUT THE EXPRESS  
 WRITTEN CONSENT OF SAMTEC, INC.

DO NOT SCALE DRAWING

SHEET SCALE: 2:1

**samtec**

520 PARK EAST BLVD, NEW ALBANY, IN 47150  
 PHONE: 812-944-6733 FAX: 812-948-5047  
 e-Mail: info@SAMTEC.com code: 55322

DESCRIPTION:  
 0.8mm HIGH SPEED EDGE CARD ASSEMBLY

DWG. NO.  
**HSEC8-1XXX-XX-XX-DV-X-XX**

BY: BRATCHER 01/24/03

SHEET 6 OF 8

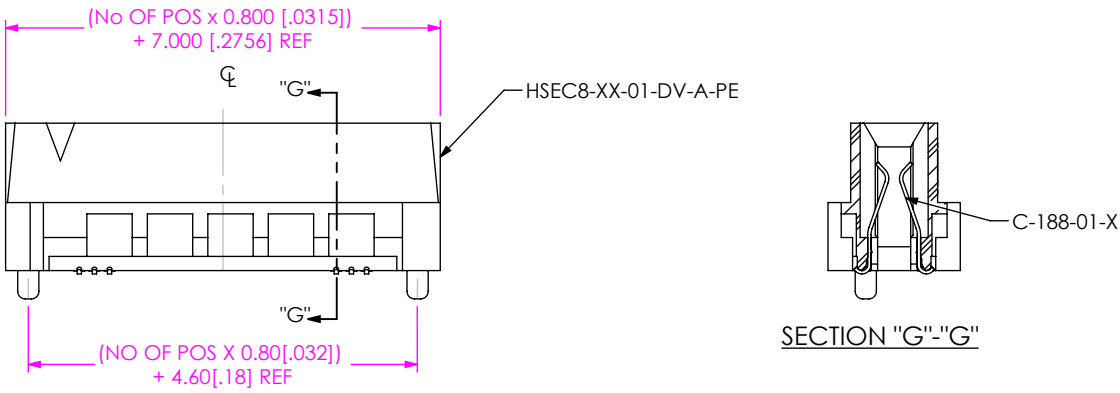
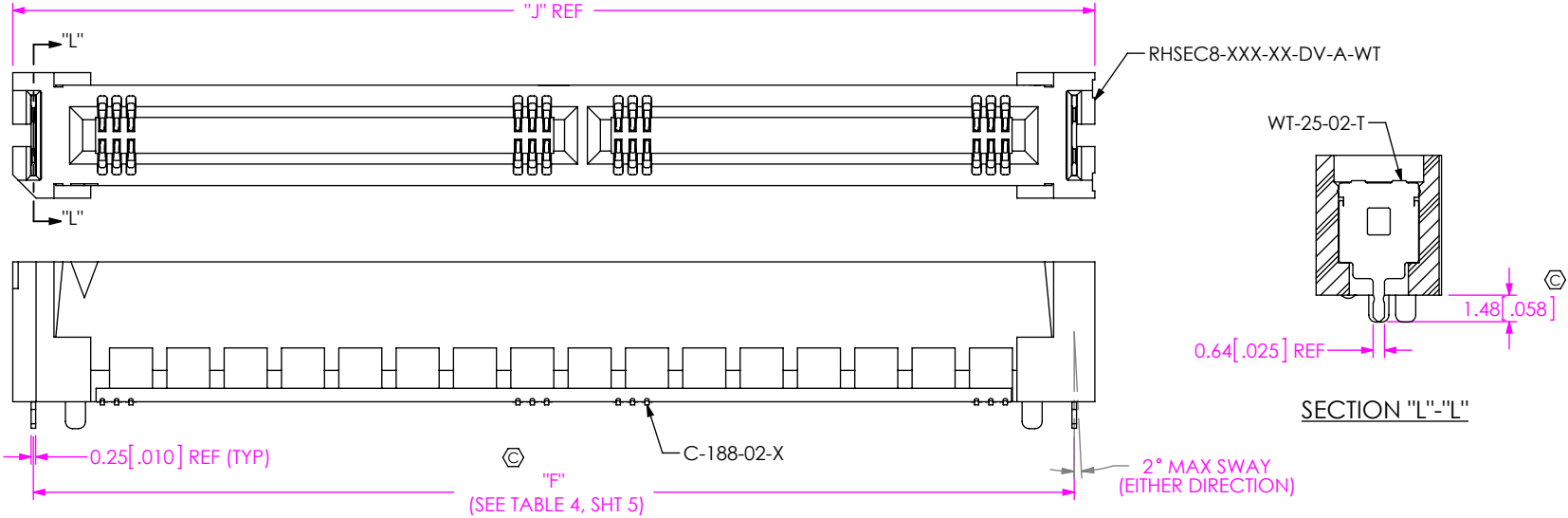


FIG 7  
\*\*-PE: PASS THROUGH OPTION  
HSEC8-120-01-XX-DV-A-PE SHOWN  
AVAILABLE IN -10, \*-13 & -20 POSITIONS ONLY  
(DIFFERENT AS SHOWN, OTHERWISE SAME AS FIG 1)  
(SOME FEATURES NOT SHOWN FOR CLARITY)  
\*\* = AVAILABLE ONLY WITH -01 CARD THICKNESS  
\*-13 IS A ONE BANK PART



| TABLE 7         |               |
|-----------------|---------------|
| No OF POSITIONS | "J"           |
| -09             | 19.60 [0.772] |
| -10             | 17.20 [0.677] |
| -13             | 22.80 [0.898] |
| -20             | 25.20 [0.992] |
| -25             | 32.40 [1.276] |
| -30             | 33.20 [1.307] |
| -37             | 42.00 [1.654] |
| -40             | 44.40 [1.748] |
| -49             | 51.60 [2.031] |
| -50             | 52.40 [2.063] |
| -60             | 60.40 [2.378] |
| -70             | 68.40 [2.693] |
| -80             | 76.40 [3.008] |
| -90             | 84.40 [3.323] |
| -100            | 92.40 [3.638] |

FIG 8  
-WT: WELD TAB OPTION  
HSEC8-160-01-XX-DV-A-WT SHOWN  
AVAILABLE IN ALL POSITIONS  
(-A OPTION REQUIRED)  
(DIFFERENT AS SHOWN, OTHERWISE SAME AS FIG 2)  
(SOME FEATURES NOT SHOWN FOR CLARITY)

PROPRIETARY NOTE  
THIS DOCUMENT CONTAINS CONFIDENTIAL AND PROPRIETARY INFORMATION AND ALL DESIGN, MANUFACTURING, REPRODUCTION, USE, PATENT RIGHTS AND SALES RIGHTS ARE EXPRESSLY RESERVED BY SAMTEC, INC. THIS DOCUMENT SHALL NOT BE DISCLOSED, IN WHOLE OR PART, TO ANY UNAUTHORIZED PERSON OR ENTITY NOR REPRODUCED, TRANSFERRED OR INCORPORATED IN ANY OTHER PROJECT IN ANY MANNER WITHOUT THE EXPRESS WRITTEN CONSENT OF SAMTEC, INC.

DO NOT SCALE DRAWING

SHEET SCALE: 2.5:1



520 PARK EAST BLVD., NEW ALBANY, IN 47150  
PHONE: 812-944-6733 FAX: 812-948-5047  
e-Mail info@SAMTEC.com code 55322

DESCRIPTION:  
0.8mm HIGH SPEED EDGE CARD ASSEMBLY

DWG. NO.  
HSEC8-1XXX-XX-XX-DV-X-XX

BY: BRATCHER 01/24/03 SHEET 7 OF 8

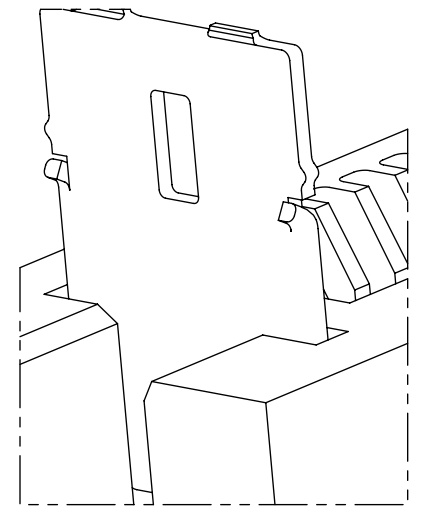
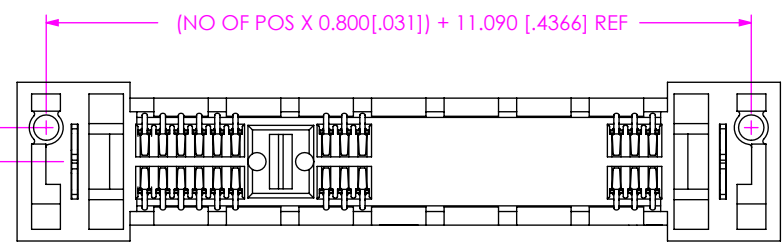
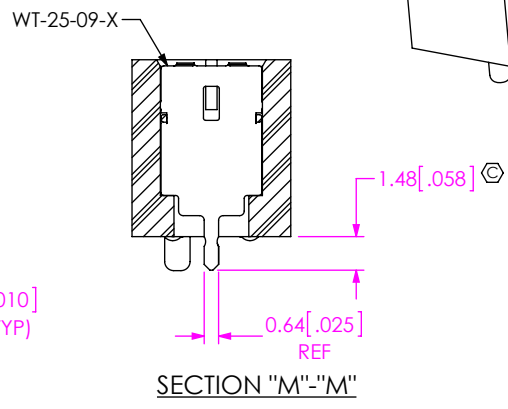
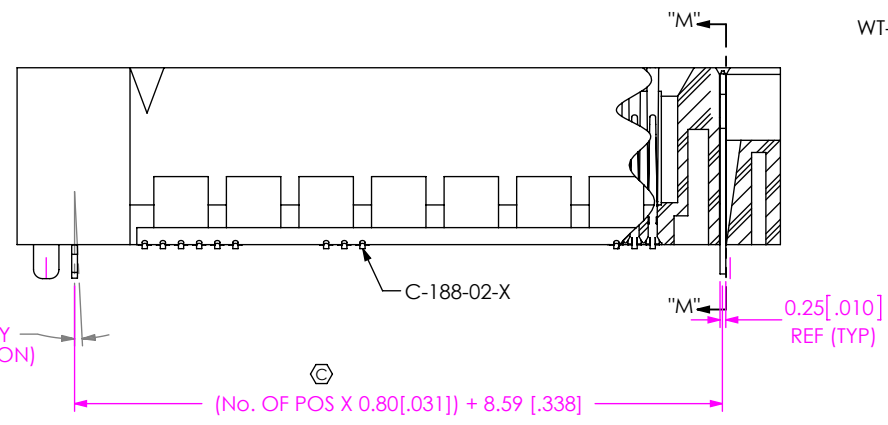
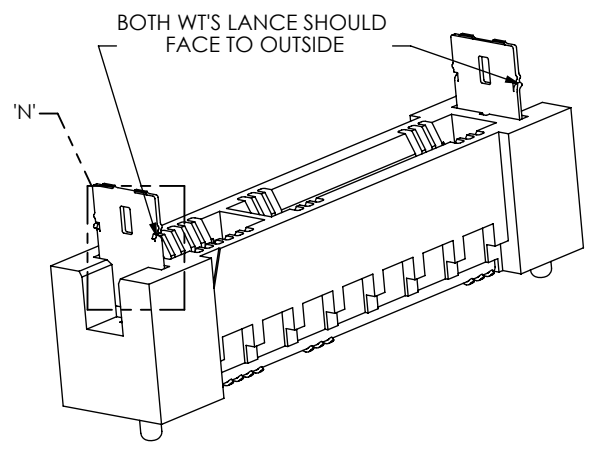
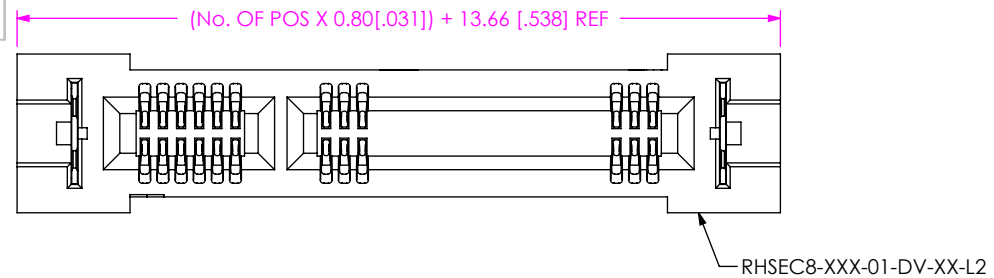


FIG 9  
\*\*-L2: ECDP LATCHING OPTION  
HSEC8-125-01-XX-DV-A-L2 SHOWN  
(AVAILABLE IN 9, 13, 25, & 49 POS ONLY)  
(NOT AVAILABLE FOR -GR TYPE USE)  
(DIFFERENT AS SHOWN, OTHERWISE SAME AS FIG 2)  
(SOME FEATURES NOT SHOWN FOR CLARITY)  
(\*\* = AVAILABLE ONLY WITH -01 CARD THICKNESS)

F:\DWG\MISC\Mktg\HSEC8-1XXX-XX-XX-DV-X-XX-MKT.SLDDRW

PROPRIETARY NOTE  
THIS DOCUMENT CONTAINS CONFIDENTIAL AND PROPRIETARY INFORMATION AND ALL DESIGN, MANUFACTURING, REPRODUCTION, USE, PATENT RIGHTS AND SALES RIGHTS ARE EXPRESSLY RESERVED BY SAMTEC, INC. THIS DOCUMENT SHALL NOT BE DISCLOSED, IN WHOLE OR PART, TO ANY UNAUTHORIZED PERSON OR ENTITY NOR REPRODUCED, TRANSFERRED OR INCORPORATED IN ANY OTHER PROJECT IN ANY MANNER WITHOUT THE EXPRESS WRITTEN CONSENT OF SAMTEC, INC.

DO NOT SCALE DRAWING  
SHEET SCALE: 3:1



520 PARK EAST BLVD, NEW ALBANY, IN 47150  
PHONE: 812-944-6733 FAX: 812-948-5047  
e-Mail info@SAMTEC.com code 55322

DESCRIPTION:  
0.8mm HIGH SPEED EDGE CARD ASSEMBLY  
DWG. NO.  
HSEC8-1XXX-XX-XX-DV-X-XX  
BY: BRATCHER 01/24/03 SHEET 8 OF 8