

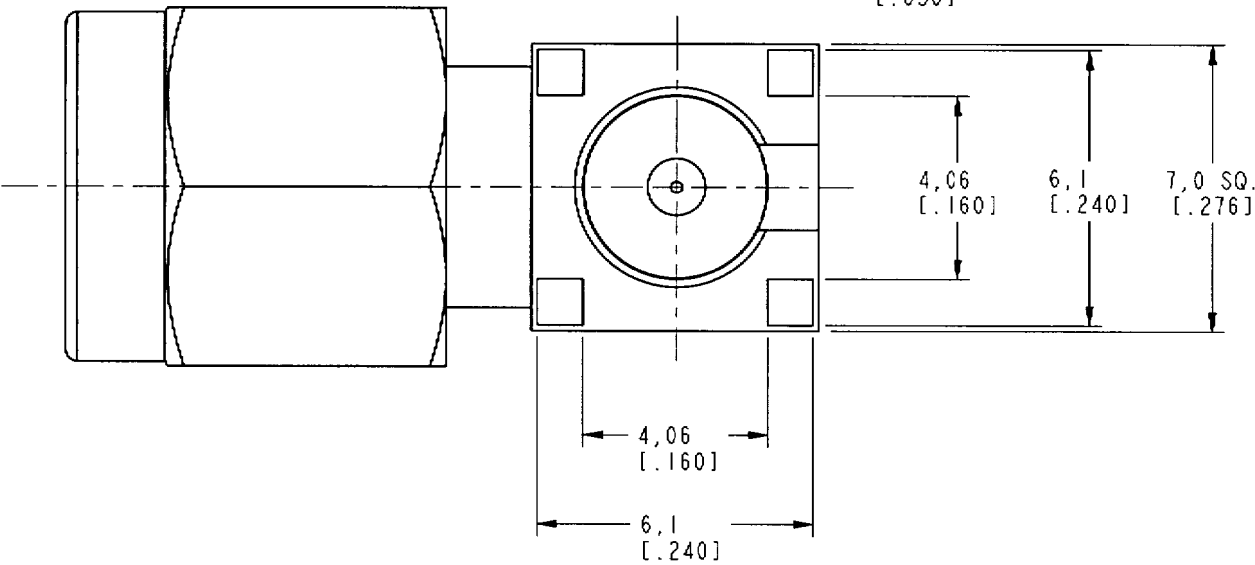
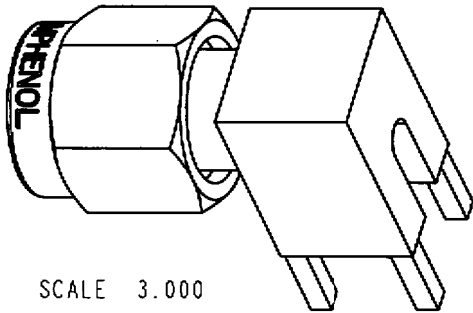
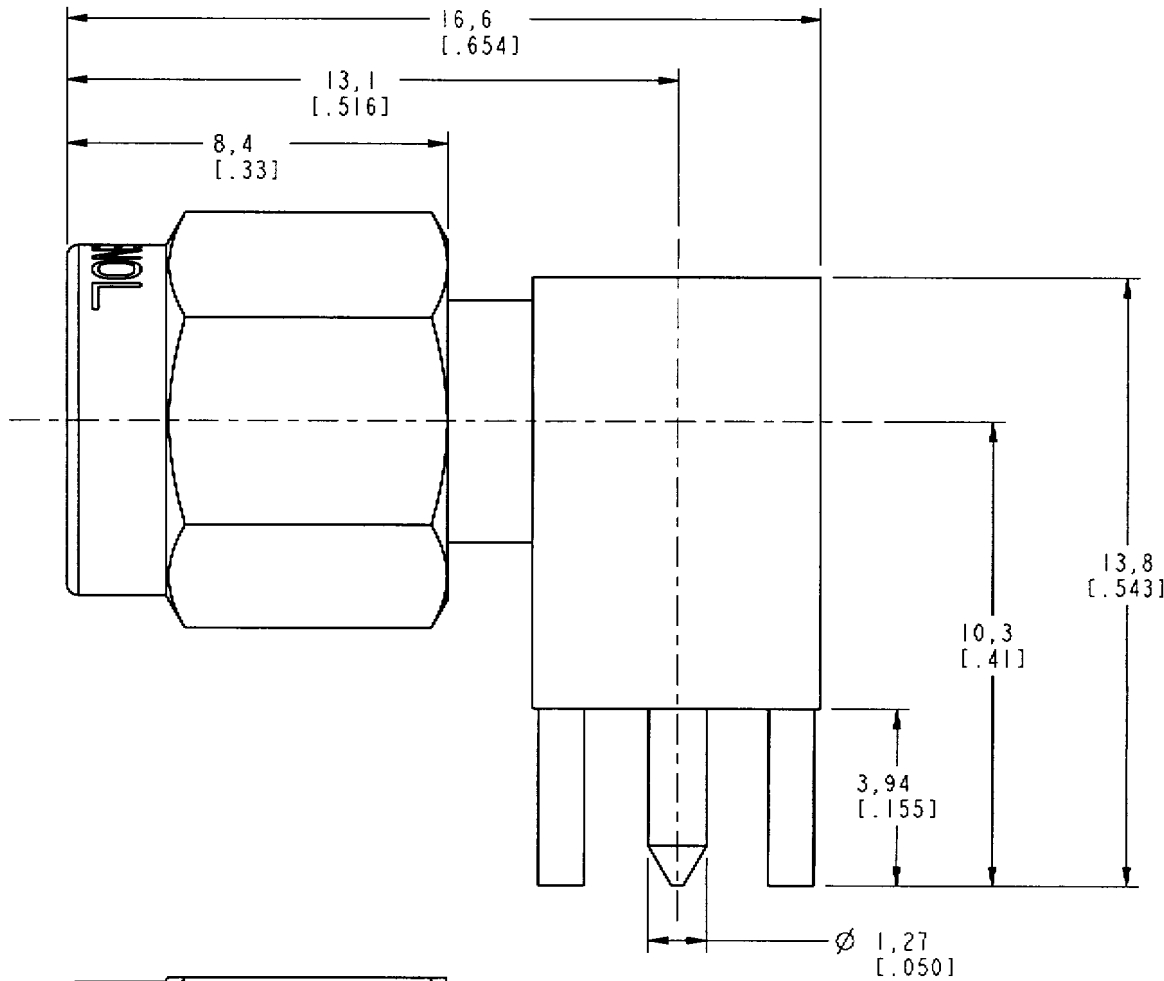
NOTES:

1. MATERIALS OF CONSTRUCTION:
SHELL, HOUSING WITH BODY - BRASS (QQ-B-626), GOLD PLATED
CONTACT PINS (2) - BRASS (QQ-B-626), GOLD PLATED
INSULATORS (2) - TEFLON PER MIL-P-19468
RETAINER RING = BeCu, NATURAL
GASKET = SILICONE RUBBER, COLOR RED
COVER = BRASS (QQ-B-613), GOLD PLATED

901-9894-RFX

REVISIONS

DRAWING NO.	REV	DESCRIPTION	DATE	ECO	APPR
THIRD ANGLE PROJ.	A	RELEASE TO MFG.	1-25-01	43650	CPM



CUSTOMER OUTLINE DRAWING
FOR REFERENCE ONLY

UNLESS OTHERWISE SPECIFIED, DIMENSIONS ARE IN INCHES AND TOLERANCES ARE:
0.5 - 6mm ±0.2mm
6 - 30mm ±0.4mm
30 - 120mm ±0.6mm

NOTICE - These drawings, specifications, or other data (1) are, and remain the property of Amphenol Corp. (2) must be returned upon request; and (3) are confidential and not to be disclosed to any person other than those to whom they are given by Amphenol Corp. The furnishing of these drawings, specifications, or other data by Amphenol Corp., or to any other person to anyone for any purpose is not to be regarded by implication or otherwise in any manner licensing, granting rights or permitting such holder or any other person to manufacture, use or sell any product, process or design, patented or otherwise, that may in any way be related to or disclosed by said drawings, specifications, or other data.

MATERIAL

REFERENCE
EAR 967698-0
GEN# 901-143-6RFX_ASSY

DRAWN
C. McGRATH

DATE
1/11/01

ENGINEER
O. BARTHELMES

DATE
1/11/01

APPROVED

CAD FILE
1:\SMA\901-9894-RFX

DATE
1/25/01

TITLE

SMA PLUG
RIGHT ANGLE
PC MOUNT

Amphenol

Amphenol Corporation
Communication and Network
Products Division
Danbury, CT U.S.A. 06810

SCALE: 6.0:1 SHEET 2 OF 2

CODE ID
74868

DWG SIZE
B

DRAWING NO.

901-9894-RFX

REV
A