



Commercial CCS-18

High Power DC-12 GHz Multi - Throw Switch

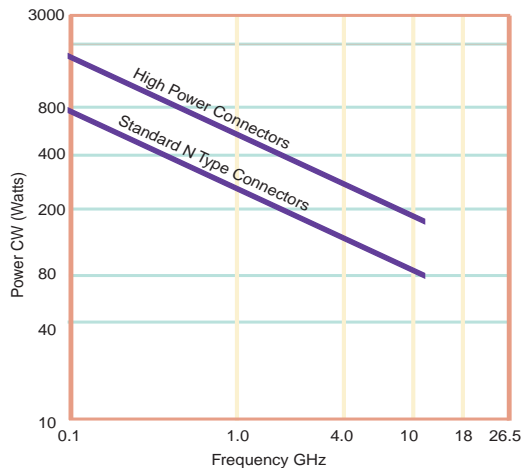
SP3T to SP6T versions only

Normally Open

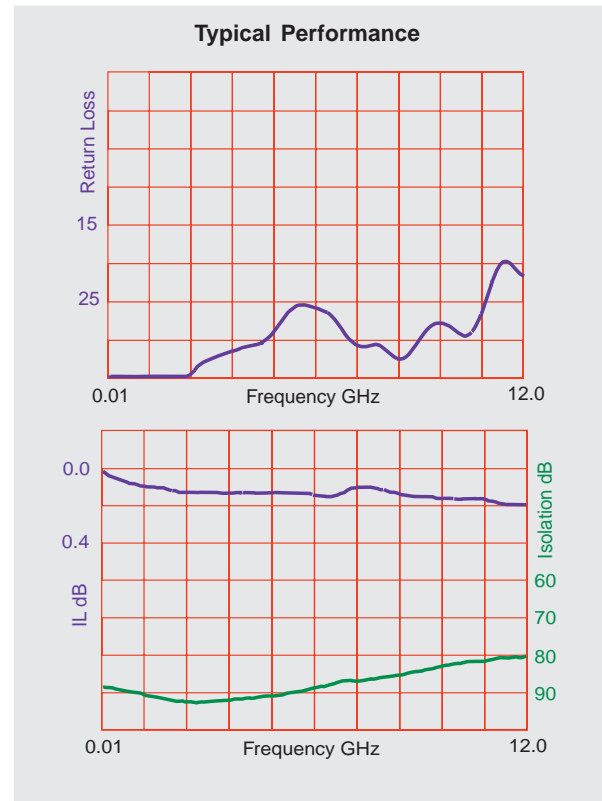
The CCS-18 Switch is a broadband multi-position coaxial switch designed to switch RF signals from one input port to any one of 3 through 6 output ports. It is readily adapted to any 50 Ohms transmission line system. The standard actuator gives individual solenoid control of each position and when de-energized, all positions are open. Standard actuator voltage is 28 VDC. The primary advantage of this switch over the miniature versions shown on previous pages is the higher power handling capability.

Specifications

RF Contacts:	Break before make			
Actuator	Voltage (VDC) 20°C	12	15	28
	Current (mA)	600	480	270
Switching Time:	20 msec max			
Connectors:	SMA (f), TNC(f)(max frequency 11GHz only)*, N Type (f)			
Weight:	9 oz. max (3 Position) 11 oz (6 Position)			
Temperature Range:	-25°C to +65°C (Operating)			
Shock:	MIL-STD-202 Method 213, Condition D (500G Non Operating)			
Vibration:	MIL-STD-202 Method 214, Condition D (10G RMS Non Operating)			
Humidity:	Moisture Seal Available			
Typical Contact Life:	5 Million Cycles			
RF Power Handling				



Specifications	DC-1 GHz	1-4 GHz	4-12 GHz (TNC limit 11GHz)
VSWR (max)	1.25:1	1.40:1	1.70:1
Insertion Loss (max)	0.30 dB	0.40 dB	0.50 dB
Isolation (min)	70.0 dB	60.0 dB	60.0 dB



A Unit of Teledyne Electronics and Communications

Specifications subject to change without notice.

www.rfswitches.com
email: switches@teledyne.com

Tel: 800-284-7007

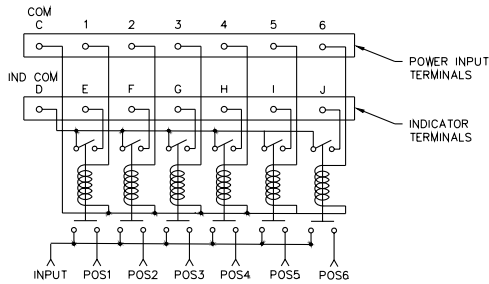
01/2004

Commercial CCS-18

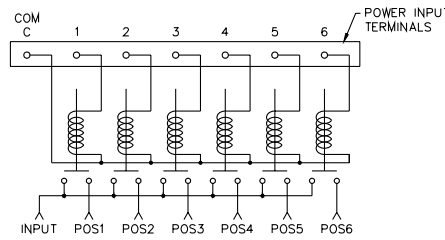
High Power DC-12 GHz Multi - Throw Switch

SP3T to SP6T versions only

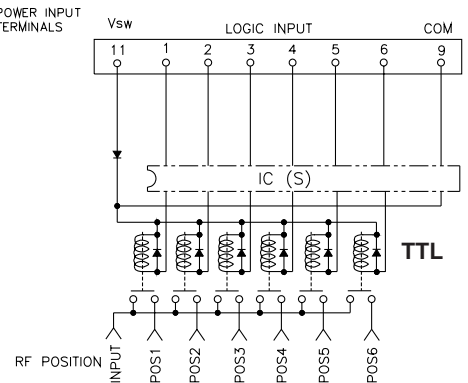
Normally Open



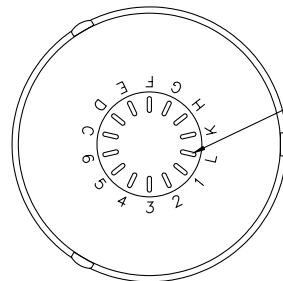
Indicators



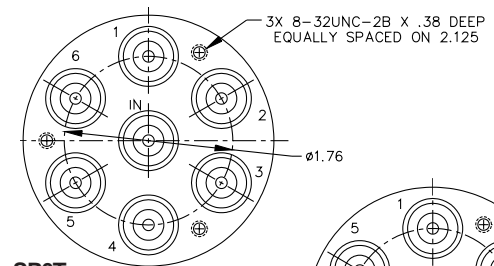
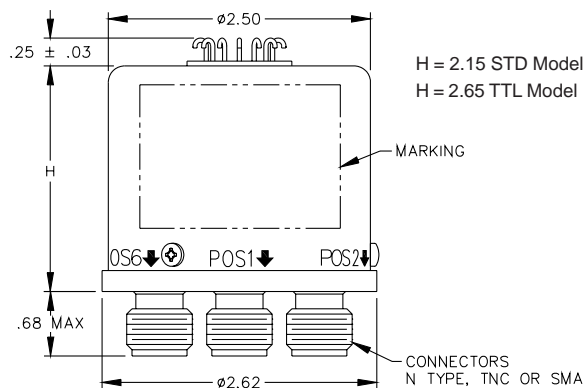
Analog



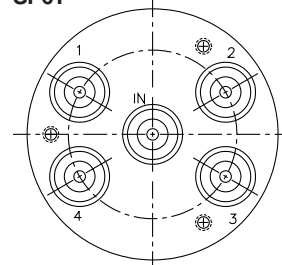
TTL



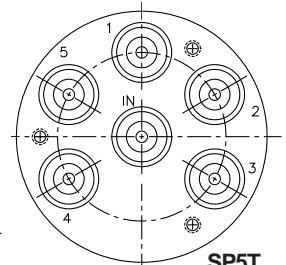
14X SOLDER TERMINALS
SOLDER WIRE USING SN63,
MAXIMUM TEMP 210°C FOR
NO MORE THAN 5 SEC.



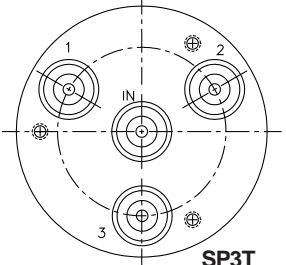
SP6T



SP4T

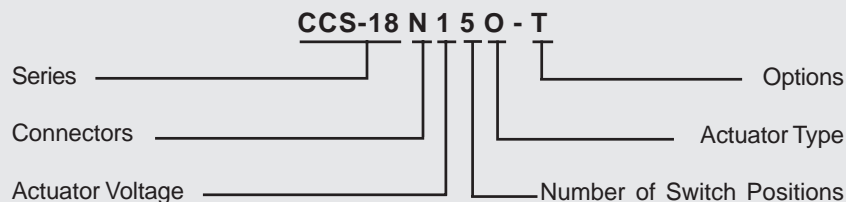


SP5T



SP3T

Part Numbering System for CCS-18 (Normally Open)



Connector	Actuator Voltage
S: SMA Female	1: 28Vdc Normally Open
N: N type Female	2: 15Vdc Normally Open
T: TNC Female*	3: 12Vdc Normally Open

Number of Positions
3: SP3T
4: SP4T
5: SP5T
6: SP6T

Actuator Type
O: No Indicator Contacts
C: Indicator Contacts

Options
T: TTL Drivers with Diodes
R: Positive + Common
TD: TTL Driver with Decoder

For other options contact Factory

See additional Datasheet for SP7T and SP8T versions



A Unit of Teledyne Electronics and Communications

Specifications subject to change without notice.

www.rfswitches.com
email: switches@teledyne.com

Tel: 800-284-7007