

MOS FET Relays

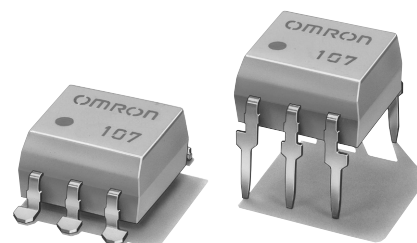
G3VM-401BY/EY

Analog-switching MOS FET Relay with Dielectric Strength of 5 kVAC between I/O Using Optical Isolation.

- Switches minute analog signals.
- Leakage current of 1 μ A max. when output relay is open.
- RoHS Compliant.

Application Examples

- Electronic automatic exchange systems
- Measurement devices
- FA systems



Note: The actual product is marked differently from the image shown here.

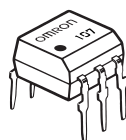
List of Models

Contact form	Terminals	Load voltage (peak value)	Model	Number per stick	Number per tape
SPST-NO	PCB terminals	400 VAC	G3VM-401BY	50	---
	Surface-mounting terminals		G3VM-401EY		
			G3VM-401EY(TR)	---	1,500

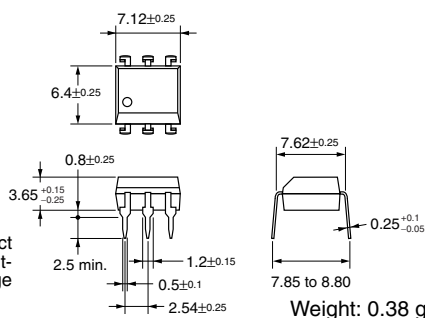
Dimensions

Note: All units are in millimeters unless otherwise indicated.

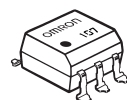
G3VM-401BY



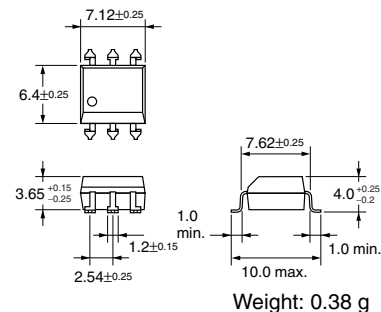
Note: The actual product is marked differently from the image shown here.



G3VM-401EY

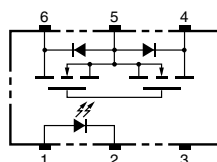


Note: The actual product is marked differently from the image shown here.

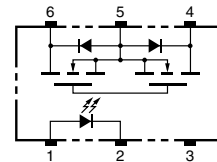


Terminal Arrangement/Internal Connections (Top View)

G3VM-401BY

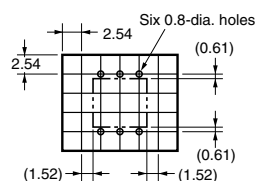


G3VM-401EY



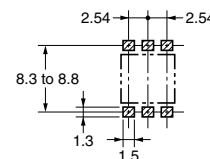
PCB Dimensions (Bottom View)

G3VM-401BY



Actual Mounting Pad Dimensions (Recommended Value, Top View)

G3VM-401EY

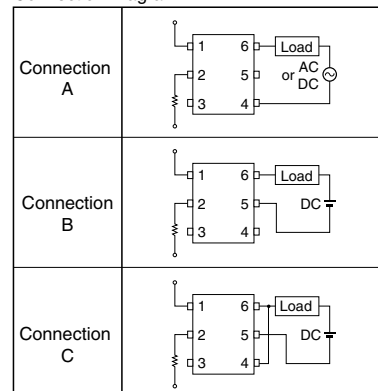


■ Absolute Maximum Ratings (Ta = 25°C)

Item		Symbol	Rating	Unit	Measurement conditions
Input	LED forward current	I_F	50	mA	
	Repetitive peak LED forward current	I_{FP}	1	A	100 μ s pulses, 100 pps
	LED forward current reduction rate	$\Delta I_F/^\circ\text{C}$	-0.5	mA/ $^\circ\text{C}$	Ta \geq 25°C
	LED reverse voltage	V_R	5	V	
	Connection temperature	T_J	125	$^\circ\text{C}$	
Output	Load voltage (AC peak/DC)	V_{OFF}	400	V	
	Continuous load current	Connection A	I_O	120	mA
		Connection B		120	
		Connection C		240	
	ON current reduction rate	Connection A	$\Delta I_{ON}/^\circ\text{C}$	-1.2	mA/ $^\circ\text{C}$
		Connection B		-1.2	
		Connection C		-2.4	
	Connection temperature	T_J	125	$^\circ\text{C}$	
Dielectric strength between input and output (See note 1.)		V_{I-O}	5,000	V_{rms}	AC for 1 min
Operating temperature		T_α	-40 to +85	$^\circ\text{C}$	With no icing or condensation
Storage temperature		T_{stg}	-55 to +125	$^\circ\text{C}$	With no icing or condensation
Soldering temperature (10 s)		---	260	$^\circ\text{C}$	10 s

Note: 1. The dielectric strength between the input and output was checked by applying voltage between all pins as a group on the LED side and all pins as a group on the light-receiving side.

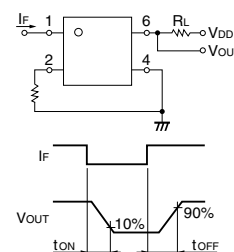
Connection Diagram



■ Electrical Characteristics (Ta = 25°C)

Item		Symbol	Minimum	Typical	Maximum	Unit	Measurement conditions
Input	LED forward voltage	V_F	1.0	1.15	1.3	V	$I_F = 10$ mA
	Reverse current	I_R	---	---	10	μA	$V_R = 5$ V
	Capacity between terminals	C_T	---	30	---	pF	$V = 0$, $f = 1$ MHz
	Trigger LED forward current	I_{FT}	---	---	3	mA	$I_O = 120$ mA
Output	Maximum resistance with output ON	Connection A	R_{ON}	---	17	Ω	$I_F = 5$ mA, $I_O = 120$ mA
		Connection B		---	11	Ω	$I_F = 5$ mA, $I_O = 120$ mA
		Connection C		---	6	Ω	$I_F = 5$ mA, $I_O = 240$ mA
	Current leakage when the relay is open	I_{LEAK}	---	0.0004	1.0	μA	$V_{OFF} = 400$ V
	Capacity between terminals A Connection	C_{OFF}	---	40	---	pF	$V = 0$, $f = 1$ MHz
Capacity between I/O terminals		C_{I-O}	---	0.8	---	pF	$f = 1$ MHz, $V_s = 0$ V
Insulation resistance		R_{I-O}	1,000	---	---	M Ω	$V_{I-O} = 500$ VDC, $R_{OH} \leq 60\%$
Turn-ON time		t_{ON}	---	0.3	1.0	ms	$I_F = 5$ mA, $R_L = 200$ Ω , $V_{DD} = 20$ V (See note 2.)
Turn-OFF time		t_{OFF}	---	0.1	1.0	ms	

Note: 2. Turn-ON and Turn-OFF Times



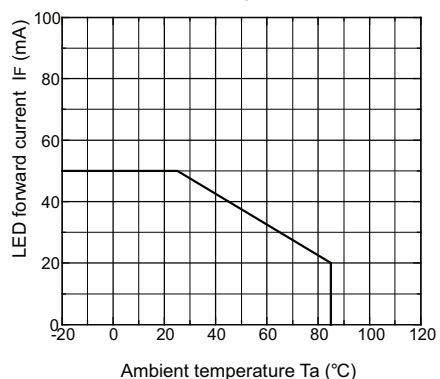
■ Recommended Operating Conditions

Use the G3VM under the following conditions so that the Relay will operate properly.

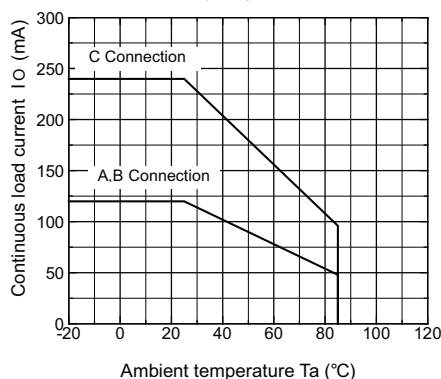
Item	Symbol	Minimum	Typical	Maximum	Unit
Load voltage (AC peak/DC)	$V_{\Delta\Delta}$	---	---	320	V
Operating LED forward current	I_Φ	5	7.5	25	mA
Continuous load current (AC peak/DC)	I_O	---	---	120	mA
Operating temperature	T_α	-20	---	65	$^\circ\text{C}$

Engineering Data

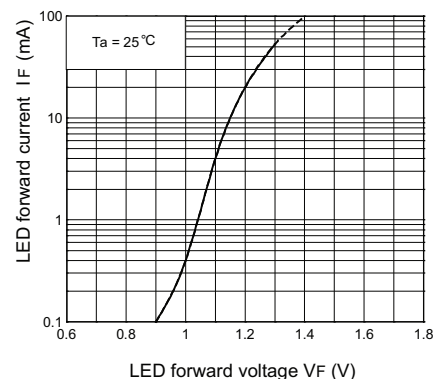
LED forward current vs. Ambient temperature
IF - Ta



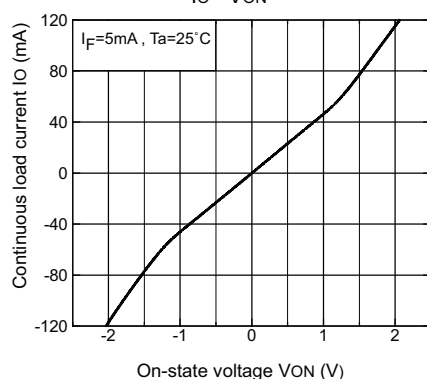
Continuous load current vs. Ambient temperature
IO - Ta



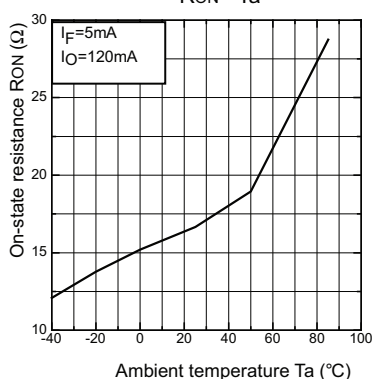
LED forward current vs. LED forward voltage
IF - VF



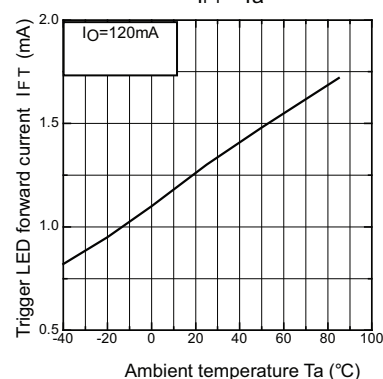
Continuous load current vs. On-state voltage
IO - VON



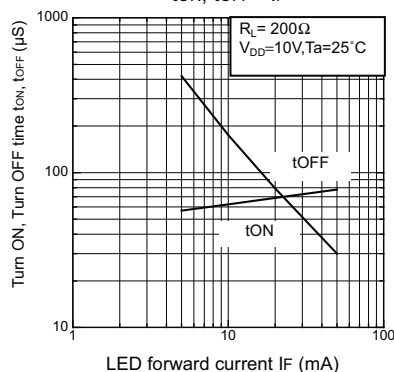
On-state resistance vs. Ambient temperature
RON - Ta



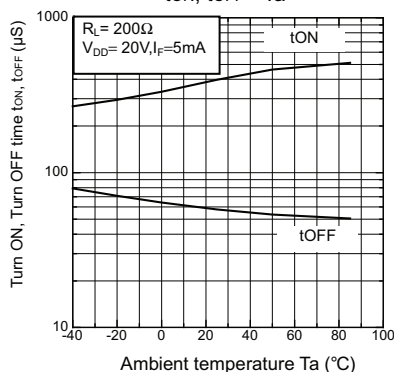
Trigger LED forward current vs. Ambient temperature
IFT - Ta



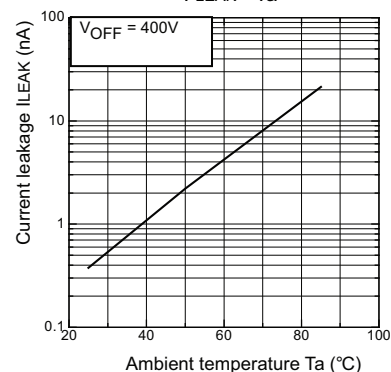
Turn ON, Turn OFF time vs. LED forward current
tON, tOFF - IF



Turn ON, Turn OFF time vs. Ambient temperature
tON, tOFF - Ta



Current leakage vs. Ambient temperature
I LEAK - Ta



All sales are subject to Omron Electronic Components LLC standard terms and conditions of sale, which can be found at http://www.components.omron.com/components/web/webfiles.nsf/sales_terms.html

ALL DIMENSIONS SHOWN ARE IN MILLIMETERS.

To convert millimeters into inches, multiply by 0.03937. To convert grams into ounces, multiply by 0.03527.

OMRON[®]

**OMRON ELECTRONIC
COMPONENTS LLC**

55 E. Commerce Drive, Suite B
Schaumburg, IL 60173

847-882-2288

OMRON ON-LINE

Global - <http://www.omron.com>

USA - <http://www.components.omron.com>

Cat. No. X302-E-1

12/10

Specifications subject to change without notice

Printed in USA