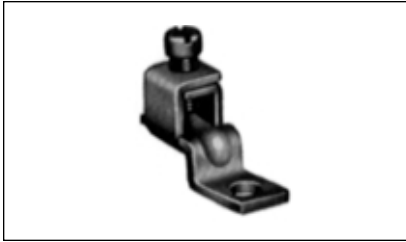


# Color-Keyed® Connectors for Code Copper Cables



## Lug-It® Lugs—One Hole, Offset Tongue



*Lug-It® connectors are designed to grip the cable firmly between the strong body and the serrated copper tongue. Double laps at the top give greater thread strength and lock the screw when it is tight. The copper tongue makes a low resistance terminal.*

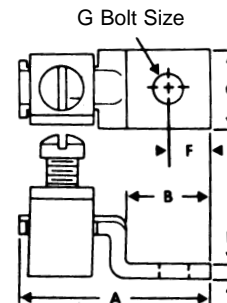
Cat. No.	Cable Size	Dimensions (in.)					
		G	A	B	C	D	F
<b>35301</b>	14 to 6	#10	1 $\frac{1}{16}$	$\frac{1}{2}$	$\frac{3}{8}$	.064	$\frac{7}{32}$
<b>35401</b>	8 to 2	$\frac{1}{4}$	1 $\frac{1}{16}$	$\frac{5}{8}$	$\frac{1}{2}$	.081	$\frac{1}{4}$
<b>*35501†</b>	4 to 2/0	$\frac{1}{4}$	1 $\frac{1}{16}$	1 $\frac{1}{8}$	$\frac{3}{4}$	.101	$\frac{3}{8}$
<b>*35601†</b>	1/0 to 4/0	$\frac{3}{8}$	2 $\frac{1}{32}$	1 $\frac{1}{2}$	1	.128	$\frac{1}{2}$

\* Aluminum body

† Hex head bolt

Add suffix G to above Cat. Nos for lug connector with green screw for grounding identification.

**For torque requirements, see page 140.**



*The conically shaped screw compresses the copper conductor so that each strand is forced to carry its own share of the load. Equal pressure is exerted on each conductor strand and the cone screw assures high pull-out and low resistance.*

## Cone Screw Lugs



Cat. No.	Wire Range	Dimensions (in.)						
		G	A	B	C	D	E	F
<b>71010-TB</b>	4-2/0	$\frac{3}{8}$	1 $\frac{21}{32}$	$\frac{27}{32}$	$\frac{23}{32}$	$\frac{3}{16}$	$\frac{25}{32}$	$\frac{3}{8}$
<b>71014</b>	2-4/0	$\frac{3}{8}$	1 $\frac{7}{8}$	$\frac{29}{32}$	$\frac{15}{16}$	$\frac{3}{16}$	$\frac{31}{32}$	$\frac{3}{8}$
<b>71015</b>	1-250	$\frac{3}{8}$	2 $\frac{1}{32}$	$\frac{29}{32}$	1	$\frac{7}{32}$	1	$\frac{3}{8}$
<b>71020-TB</b>	2/0-500	$\frac{1}{2}$	2 $\frac{3}{4}$	1 $\frac{1}{4}$	1 $\frac{11}{32}$	$\frac{9}{32}$	1 $\frac{15}{32}$	$\frac{9}{16}$

Add suffix G to lug Cat. No. 71010-TB, and 71014 for lug with green screw for grounding identification.

U.L. File No. E-9609

**For torque requirements, see page 140.**

