

**Product number FCN11459\_LED1-M2**

|                 |               |             |                |
|-----------------|---------------|-------------|----------------|
| Family          | Leila         | FWHM        | (simulated) 28 |
| Type            | Pack          | Efficiency  | -              |
| LED             | XR-E          | cd/Im       | -              |
| Color           | White         | Gerber File | Available      |
| Diameter        | 21.6 mm       |             |                |
| Height          | 16.5 mm       |             |                |
| Style           | Round         |             |                |
| Optic Material  | PMMA          |             |                |
| Holder Material | PC            |             |                |
| Fastening       | Glue          |             |                |
| Status          | On production |             |                |

**Product number FCN10808\_LED1-RS**

|                 |               |             |           |
|-----------------|---------------|-------------|-----------|
| Family          | Leila         | FWHM        | 6 degrees |
| Type            | Pack          | Efficiency  | -         |
| LED             | XR-E          | cd/Im       | -         |
| Color           | White         | Gerber File | Available |
| Diameter        | 21.6 mm       |             |           |
| Height          | 16.5 mm       |             |           |
| Style           | Round         |             |           |
| Optic Material  | PMMA          |             |           |
| Holder Material | PC            |             |           |
| Fastening       | Glue          |             |           |
| Status          | On production |             |           |

**Product number FCN10810\_LED1-D**

|                 |               |             |            |
|-----------------|---------------|-------------|------------|
| Family          | Leila         | FWHM        | 10 degrees |
| Type            | Pack          | Efficiency  | -          |
| LED             | XR-E          | cd/Im       | -          |
| Color           | White         | Gerber File | Available  |
| Diameter        | 21.6 mm       |             |            |
| Height          | 16.5 mm       |             |            |
| Style           | Round         |             |            |
| Optic Material  | PMMA          |             |            |
| Holder Material | PC            |             |            |
| Fastening       | Glue          |             |            |
| Status          | On production |             |            |

**Product number FCN11104\_LED1-O-90**

|                 |               |             |               |
|-----------------|---------------|-------------|---------------|
| Family          | Leila         | FWHM        | 10+42 degrees |
| Type            | Pack          | Efficiency  | 85 %          |
| LED             | XR-E          | cd/Im       | -             |
| Color           | White         | Gerber File | Available     |
| Diameter        | 21.6 mm       |             |               |
| Height          | 16.5 mm       |             |               |
| Style           | Round         |             |               |
| Optic Material  | PMMA          |             |               |
| Holder Material | PC            |             |               |
| Fastening       | Glue          |             |               |
| Status          | On production |             |               |

**Product number FCN11372\_LED1-MD**

|                 |               |             |            |
|-----------------|---------------|-------------|------------|
| Family          | Leila         | FWHM        | 24 degrees |
| Type            | Pack          | Efficiency  | 90 %       |
| LED             | XR-E          | cd/Im       | -          |
| Color           | White         | Gerber File | Available  |
| Diameter        | 21.6 mm       |             |            |
| Height          | 16.5 mm       |             |            |
| Style           | Round         |             |            |
| Optic Material  | PMMA          |             |            |
| Holder Material | PC            |             |            |
| Fastening       | Glue          |             |            |
| Status          | On production |             |            |

**Product number FCN10807\_LED1-M**

|                 |               |             |            |
|-----------------|---------------|-------------|------------|
| Family          | Leila         | FWHM        | 28 degrees |
| Type            | Pack          | Efficiency  | -          |
| LED             | XR-E          | cd/Im       | -          |
| Color           | White         | Gerber File | Available  |
| Diameter        | 21.6 mm       |             |            |
| Height          | 16.5 mm       |             |            |
| Style           | Round         |             |            |
| Optic Material  | PMMA          |             |            |
| Holder Material | PC            |             |            |
| Fastening       | Glue          |             |            |
| Status          | On production |             |            |

**Product number FCN10809\_LED1-REC**

|                 |               |             |               |
|-----------------|---------------|-------------|---------------|
| Family          | Leila         | FWHM        | 42+22 degrees |
| Type            | Pack          | Efficiency  | -             |
| LED             | XR-E          | cd/Im       | -             |
| Color           | White         | Gerber File | Available     |
| Diameter        | 21.6 mm       |             |               |
| Height          | 16.5 mm       |             |               |
| Style           | Round         |             |               |
| Optic Material  | PMMA          |             |               |
| Holder Material | PC            |             |               |
| Fastening       | Glue          |             |               |
| Status          | On production |             |               |

**NOTE: The typical divergence will be changed by different color, chip size and chip position tolerance. The typical total divergence is the full angle measured where the luminous intensity is half of the peak value.**



## PRODUCT DATASHEET

### Leila series

last update 14/6/2012



#### GENERAL INFORMATION

- Product series especially designed & optimized for XR-E series of LEDs.
- Special care taken to make light distribution as uniform as possible.
- Lens material optical grade PMMA with high UV and temperature resistance. Allows use of high current and temperature conditions.

Please find more information about used material from below:

[http://ledil.fi/sites/default/files/Documents/Technical/Material/PMMA%20N%20UL94\\_Yellow%20Card.pdf](http://ledil.fi/sites/default/files/Documents/Technical/Material/PMMA%20N%20UL94_Yellow%20Card.pdf)

<http://ledil.fi/sites/default/files/Documents/Technical/Material/PMMA%20N%20PLEXIGLAS-Datasheet.pdf>

- Optic holder molded by high quality PC material (120 degrees of Celcius / 248 degrees of Fahrenheit).

- Fastening to PCB with appropriate adhesive. By clicking link below you can find Ledil recommended glue options.

[http://www.ledil.com/datasheets/DataSheet\\_GLUES.pdf](http://www.ledil.com/datasheets/DataSheet_GLUES.pdf)

**NOTE 1: We advise customer to ensure the suitability and sufficiency of the bond in the end product. For example, mechanical stress, vibration and holes on the surface of the circuit board weaken the strength of the glue.**

**NOTE 2: All surfaces where glue is applied must be clean, dry and free from grease and dirt. If cleaning of PCB surfaces is needed, please follow strictly the cleaning instructions of your LED manufacturer -this is important as cleaning shall under no circumstances damage LEDs or other electronics components on the PCB.**

**Further note that optical components shall not be cleaned with any chemicals - only micro fiber cloth may be used to remove fingerprints or other traces from handling.**

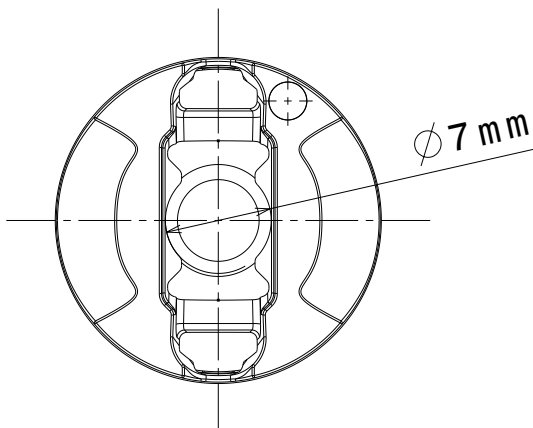
D

C

B

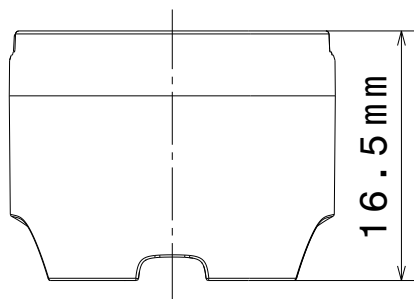
A

4



4

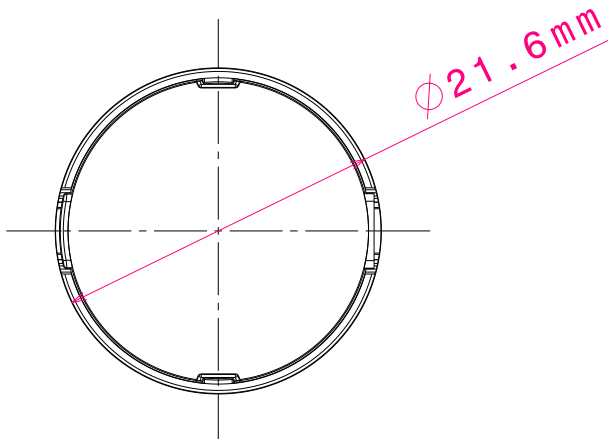
3



3

2

Materials:  
Lens PMMA  
Holder PC



2

This drawing is our property.  
It can't be reproduced  
or communicated without  
our written agreement.

LEDIL

L  
T  
F  
Fe  
e  
l  
i  
n

N

h  
d

DRAWING TITLE

DRAWN BY

DATE

Datasheet LC1-Series Assy

CHECKED BY

DATE

SIZE

DRAWING NUMBER

REV

DESIGNED BY

DATE

SCALE

2:1

WEIGHT (g)

SHEET

1/1

D

A

1