

2.5 V or 3.3 V, 10-220-MHz, Low Jitter, 5 Output Zero Delay Buffer

Features

- 10 MHz to 220 MHz maximum operating range
- Zero input-output propagation delay, adjustable by loading on CLKOUT pin
- Multiple low-skew outputs
 - 30 ps typical output-output skew
 - One input drives five outputs
- 22 ps typical cycle-to-cycle jitter
- 13 ps typical period jitter
- Standard and high drive strength options
- Available in space-saving 150-mil SOIC package
- 3.3 V or 2.5 V operation
- Industrial temperature available

Functional Description

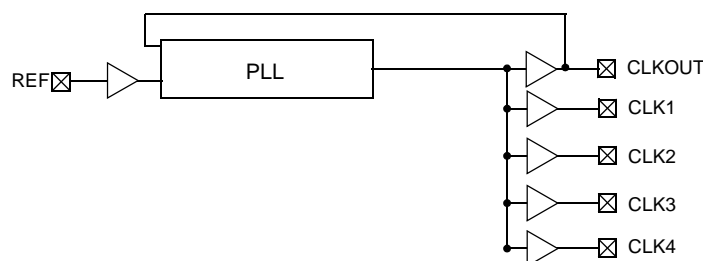
The CY23EP05 is a 2.5 V or 3.3 V zero delay buffer designed to distribute low-jitter high-speed clocks and is available in a 8-pin SOIC package. It accepts one reference input, and drives out five low-skew clocks. The -1H version operates up to 220 (200) MHz frequencies at 3.3 V (2.5 V), and has a higher drive strength than the -1 devices. All parts have on-chip PLLs which lock to an input clock on the REF pin. The PLL feedback is on-chip and is obtained from the CLKOUT pad.

The CY23EP05 PLL enters a power-down mode when there are no rising edges on the REF input (< ~2 MHz). In this state, the outputs are three-stated and the PLL is turned off, resulting in less than 25 μ A of current draw.

The CY23EP05 is available in different configurations, as shown in the Ordering Information table. The CY23EP05-1 is the base part. The CY23EP05-1H is the high-drive version of the -1, and its rise and fall times are much faster than the -1.

These parts are not intended for 5 V input-tolerant applications.

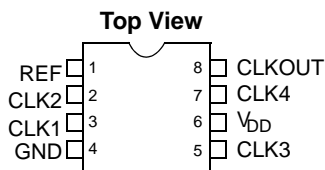
Logic Block Diagram



Contents

Pin Configuration	3	Supplemental Parametric Information	8
Pin Description	3	Ordering Information	12
Zero Delay and Skew Control	3	Ordering Code Definitions	12
Absolute Maximum Conditions	4	Acronyms	13
Operating Conditions	4	Document Conventions	13
3.3-V DC Electrical Specifications	4	Units of Measure	13
2.5-V DC Electrical Specifications	5	Sales, Solutions, and Legal Information	15
3.3-V and 2.5-V AC Electrical Specifications	5	Worldwide Sales and Design Support	15
Switching Waveforms	6	Products	15
Test Circuits	7	PSoC Solutions	15

Pin Configuration



Pin Description

Pin	Signal	Description
1	REF ^[1]	Input reference frequency
2	CLK2 ^[2]	Buffered clock output
3	CLK1 ^[2]	Buffered clock output
4	GND	Ground
5	CLK3 ^[2]	Buffered clock output
6	V _{DD}	3.3 V or 2.5 V supply
7	CLK4 ^[2]	Buffered clock output
8	CLKOUT ^[2,3]	Buffered clock output, internal feedback on this pin

Zero Delay and Skew Control

All outputs should be uniformly loaded to achieve zero delay between the input and output. Since the CLKOUT pin is the internal feedback to the PLL, its relative loading can adjust the input-output delay.

The output driving the CLKOUT pin will be driving a total load of 5 pF plus any additional load externally connected to this pin. For applications requiring zero input-output delay, the total load on

each output pin (including CLKOUT) must be the same. If input-output delay adjustments are required, the CLKOUT load may be changed to vary the delay between the REF input and remaining outputs.

For zero output-output skew, be sure to load all outputs equally. For further information refer to the application note titled "CY2305 and CY2309 as PCI and SDRAM Buffers".

Notes

1. Weak pull-down.
2. Weak pull-down on all outputs.
3. This output is driven and has an internal feedback for the PLL. The load on this output can be adjusted to change the skew between the reference and output.

Absolute Maximum Conditions

Exceeding maximum ratings may shorten the useful life of the device. User guidelines are not tested.

Supply voltage to ground potential -0.5 V to 4.6 V

DC Input Voltage $V_{SS} - 0.5$ V to 4.6 V

Storage temperature..... -65 °C to 150 °C

Junction temperature..... 150 °C

Static discharge voltage

(per MIL-STD-883, Method 3015..... > 2000 V

Operating Conditions

Parameter	Description	Min	Typ	Max	Unit
$V_{DD3.3}$	3.3 V supply voltage	3.0	3.3	3.6	V
$V_{DD2.5}$	2.5 V supply voltage	2.3	2.5	2.7	V
T_A	Operating temperature (ambient temperature) – commercial	0	–	70	°C
	Operating temperature (ambient temperature) – industrial	-40	–	85	°C
$C_L^{[4]}$	Load capacitance, < 100 MHz, 3.3 V	–	–	30	pF
	Load capacitance, < 100 MHz, 2.5 V with high drive	–	–	30	pF
	Load capacitance, < 133.3 MHz, 3.3 V	–	–	22	pF
	Load capacitance, < 133.3 MHz, 2.5 V with high drive	–	–	22	pF
	Load capacitance, < 133.3 MHz, 2.5 V with standard drive	–	–	15	pF
	Load capacitance, > 133.3 MHz, 3.3 V	–	–	15	pF
	Load capacitance, > 133.3 MHz, 2.5 V with high drive	–	–	15	pF
C_{IN}	Input capacitance ^[5]	–	–	5	pF
BW	Closed-loop bandwidth, 3.3 V	–	1–1.5	–	MHz
	Closed-loop bandwidth, 2.5 V	–	0.8	–	MHz
R_{OUT}	Output impedance, 3.3 V high drive	–	29	–	Ω
	Output impedance, 3.3 V standard drive	–	41	–	Ω
	Output impedance, 2.5 V high drive	–	37	–	Ω
	Output Impedance, 2.5 V standard drive	–	41	–	Ω
t_{PU}	Power-up time for all V_{DDs} to reach minimum specified voltage (power ramps must be monotonic)	0.01	–	50	ms
Theta $J_A^{[6]}$	Dissipation, junction to ambient, 8-pin SOIC	–	131	–	°C/W
Theta $J_C^{[6]}$	Dissipation, junction to case, 8-pin SOIC	–	81	–	°C/W

3.3-V DC Electrical Specifications

Parameter	Description	Test Conditions	Min	Typ	Max	Unit
V_{DD}	Supply voltage		3.0	3.3	3.6	V
V_{IL}	Input LOW voltage		–	–	0.8	V
V_{IH}	Input HIGH voltage		2.0	–	$V_{DD} + 0.3$	V
I_{IL}	Input leakage current	$0 < V_{IN} < V_{IL}$	-10	–	10	μ A
I_{IH}	Input HIGH current	$V_{IN} = V_{DD}$	–	–	100	μ A
V_{OL}	Output LOW voltage	$I_{OL} = 8$ mA (standard drive)	–	–	0.4	V
		$I_{OL} = 12$ mA (High drive)	–	–	0.4	V
V_{OH}	Output HIGH voltage	$I_{OH} = -8$ mA (standard drive)	2.4	–	–	V
		$I_{OH} = -12$ mA (high drive)	2.4	–	–	V
I_{DD} (PD mode)	Power down supply current	REF = 0 MHz (commercial)	–	–	12	μ A
		REF = 0 MHz (industrial)	–	–	25	μ A
I_{DD}	Supply current	Unloaded outputs, 66-MHz REF	–	–	30	mA

Notes

- Applies to Test Circuit #1.
- Applies to both REF Clock and internal feedback path on CLKOUT.
- Theta J_A , EIA JEDEC 51 test board conditions, 2S2P; Theta J_C Mil-Spec 883E Method 1012.1.

2.5-V DC Electrical Specifications

Parameter	Description	Test Conditions	Min	Typ	Max	Unit
V_{DD}	Supply voltage		2.3	2.5	2.7	V
V_{IL}	Input LOW voltage		–	–	0.7	V
V_{IH}	Input HIGH voltage		1.7	–	$V_{DD} + 0.3$	V
I_{IL}	Input leakage current	$0 < V_{IN} < V_{DD}$	–10	–	10	μA
I_{IH}	Input HIGH current	$V_{IN} = V_{DD}$	–	–	100	μA
V_{OL}	Output LOW voltage	$I_{OL} = 8 \text{ mA}$ (standard drive) $I_{OL} = 12 \text{ mA}$ (high drive)	– –	–	0.5 0.5	V V
V_{OH}	Output HIGH voltage	$I_{OH} = -8 \text{ mA}$ (standard drive) $I_{OH} = -12 \text{ mA}$ (high drive)	$V_{DD} - 0.6$ $V_{DD} - 0.6$	–	– –	V V
I_{DD} (PD mode)	Power Down supply current	REF = 0 MHz (commercial)	–	–	12	μA
		REF = 0 MHz (industrial)	–	–	25	μA
I_{DD}	Supply current	Unloaded outputs, 66-MHz REF	–	–	45	mA

3.3-V and 2.5-V AC Electrical Specifications

Parameter	Description	Test Conditions	Min	Typ	Max	Unit
$1/t_1$	Maximum frequency ^[7] (input/output)	3.3 V high drive	10	–	220	MHz
		3.3 V standard drive	10	–	167	MHz
		2.5 V high drive	10	–	200	MHz
		2.5 V standard drive	10	–	133	MHz
T_{IDC}	Input duty cycle	< 133.3 MHz	25	–	75	%
		> 133.3 MHz	40	–	60	%
$t_2 \div t_1$	Output duty cycle ^[8]	< 133.3 MHz	47	–	53	%
		> 133.3 MHz	45	–	55	%
t_3, t_4	Rise, fall time (3.3 V) ^[8]	Std drive, CL = 30 pF, < 100 MHz	–	–	1.6	ns
		Std drive, CL = 22 pF, < 133.3 MHz	–	–	1.6	ns
		Std drive, CL = 15 pF, < 167 MHz	–	–	0.6	ns
		High drive, CL = 30 pF, < 100 MHz	–	–	1.2	ns
		High drive, CL = 22 pF, < 133.3 MHz	–	–	1.2	ns
		High drive, CL = 15 pF, > 133.3 MHz	–	–	0.5	ns
t_3, t_4	Rise, fall time (2.5 V) ^[8]	Std drive, CL = 15 pF, < 133.33 MHz	–	–	1.5	ns
		High drive, CL = 30 pF, < 100 MHz	–	–	2.1	ns
		High drive, CL = 22 pF, < 133.3 MHz	–	–	1.3	ns
		High drive, CL = 15 pF, > 133.3 MHz	–	–	1.2	ns
t_5	Output to output skew ^[8]	All outputs equally loaded	–	30	100	ps
t_6	Delay, REF rising edge to CLKOUT rising edge ^[8]	PLL enabled at 3.3 V	–100	–	100	ps
		PLL enabled at 2.5 V	–200	–	200	ps
t_7	Part to part skew ^[8]	Measured at $V_{DD}/2$. Any output to any output, 3.3 V supply	–150	–	150	ps
		Measured at $V_{DD}/2$. Any output to any output, 2.5 V supply	–300	–	300	ps

Notes

7. For the given maximum loading conditions. See C_L in Operating Conditions Table.
8. Parameter is guaranteed by design and characterization. Not 100% tested in production.

3.3-V and 2.5-V AC Electrical Specifications (continued)

Parameter	Description	Test Conditions	Min	Typ	Max	Unit
t_{LOCK}	PLL lock time ^[8]	Stable power supply, valid clocks presented on REF and CLKOUT pins	–	–	1.0	ms
$T_{\text{JCC}}^{[8,9]}$	Cycle-to-cycle jitter, peak	3.3 V supply, > 66 MHz, < 15 pF	–	22	55	ps
		3.3 V supply, > 66 MHz, < 30 pF, standard drive	–	45	125	ps
		3.3 V supply, > 66 MHz, < 30 pF, high drive	–	45	100	ps
		2.5 V supply, > 66 MHz, < 15 pF, standard drive	–	40	100	ps
		2.5 V supply, > 66 MHz, < 15 pF, high drive	–	35	80	ps
		2.5 V supply, > 66 MHz, < 30 pF, high drive	–	52	125	ps
$T_{\text{PER}}^{[8,9]}$	Period jitter, peak	3.3 V supply, 66–100 MHz, < 15 pF	–	18	60	ps
		3.3 V supply, > 100 MHz, < 15 pF	–	13	35	ps
		3.3 V supply, > 66 MHz, < 30 pF, standard drive	–	28	75	ps
		3.3 V supply, > 66 MHz, < 30 pF, high drive	–	26	70	ps
		2.5 V supply, > 66 MHz, < 15 pF, standard drive	–	25	60	ps
		2.5 V supply, 66–100 MHz, < 15 pF, high drive	–	22	60	ps
		2.5 V supply, > 100 MHz, < 15 pF, high drive	–	19	45	ps

Switching Waveforms

Figure 1. Duty Cycle Timing

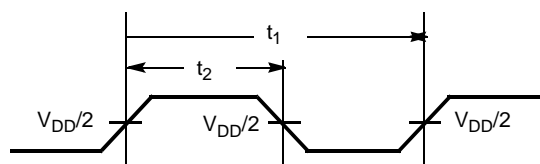


Figure 2. All Outputs Rise/Fall Time

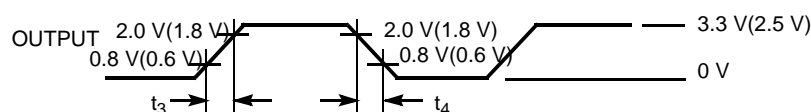
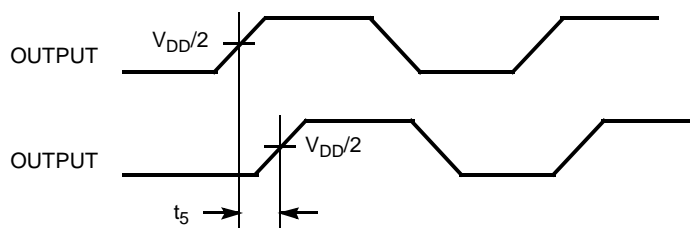


Figure 3. Output-Output Skew



Note

9. Typical jitter is measured at 3.3 V or 2.5 V, 29°C, with all outputs driven into the maximum specified load. Further information regarding jitter specifications may be found in the application notes, "Understanding Data Sheet Jitter Specifications for Cypress Products."

Switching Waveforms (continued)

Figure 4. Input-Output Propagation Delay

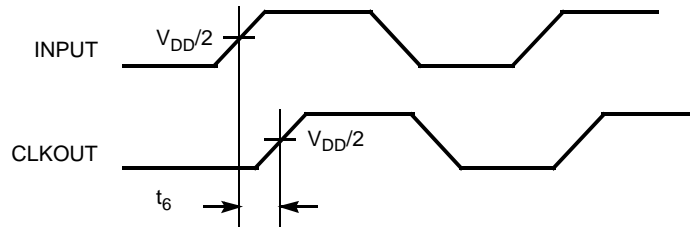
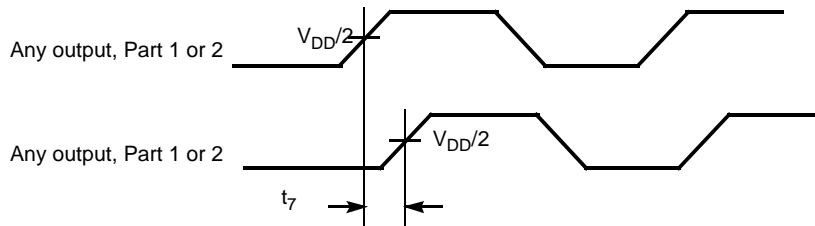
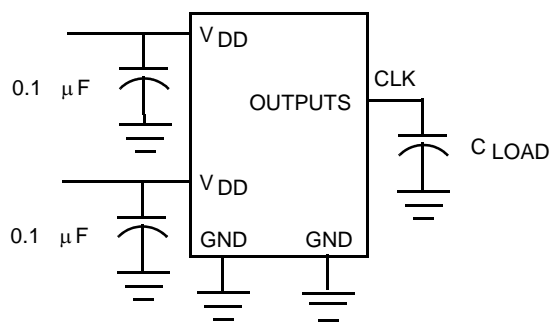


Figure 5. Part-Part Skew



Test Circuits

Test Circuit # 1



Supplemental Parametric Information

Figure 6. 2.5 V Typical Room Temperature Graph for REF Input to CLKn Delay versus Loading
Difference between CLKOUT and CLKn. Data is shown for 66 MHz. Delay is a weak function of frequency

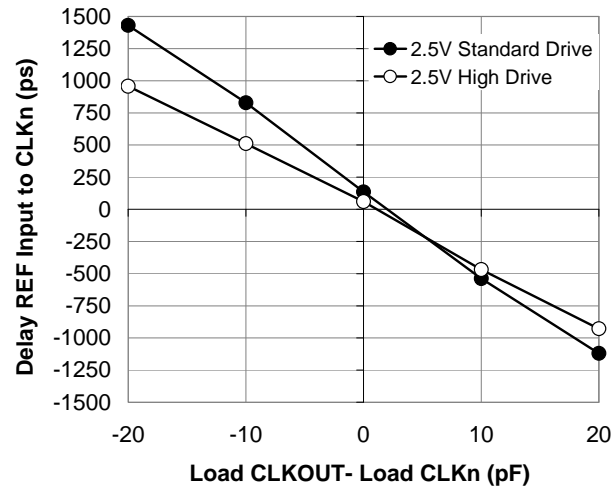


Figure 7. 3.3 V Typical Room Temperature Graph for REF Input to CLKn Delay versus Loading
Difference between CLKOUT and CLKn. Data is shown for 66 MHz. Delay is a weak function of frequency

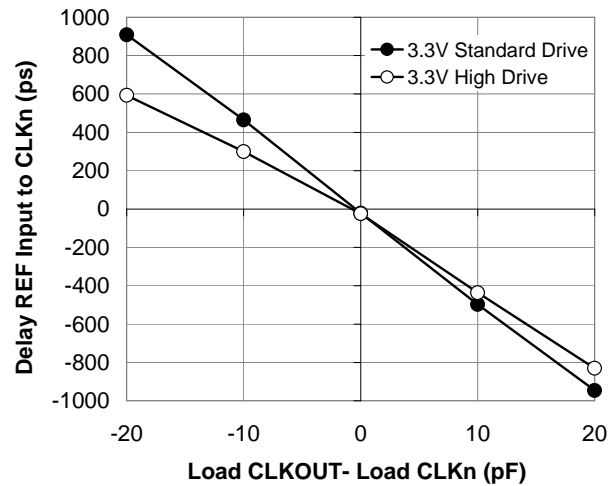


Figure 8. 2.7 V Measured Supply Current versus Frequency, Drive Strength, Loading, and Temperature.
Note that the 30-pF data above 100 MHz is beyond the data sheet specification of 22 pF

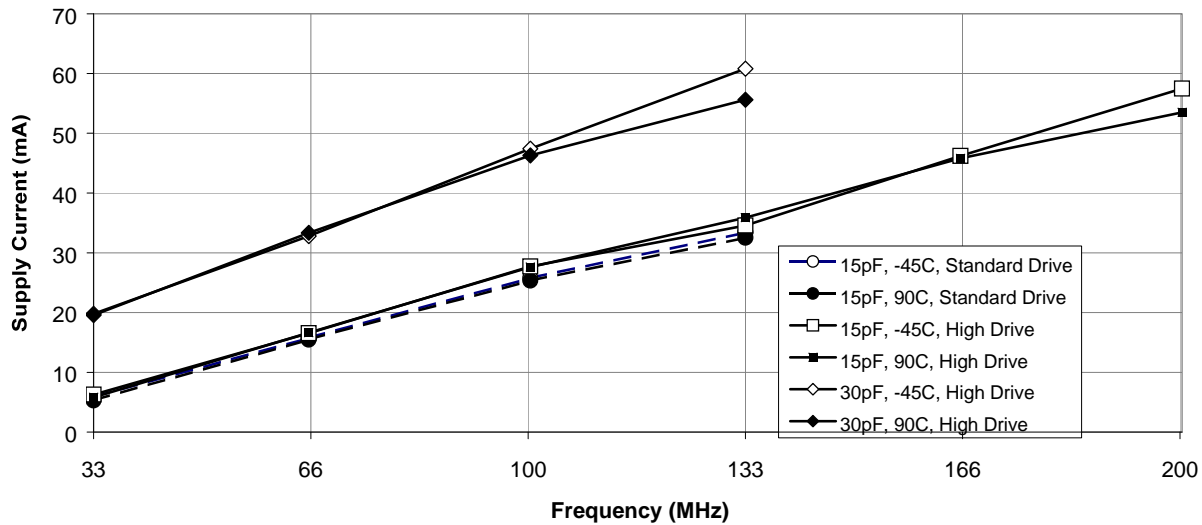


Figure 9. 3.6 V Measured Supply Current versus Frequency, Drive Strength, Loading, and Temperature.
Note that the 30-pF high-drive data above 100 MHz is beyond the data sheet specification of 22 pF

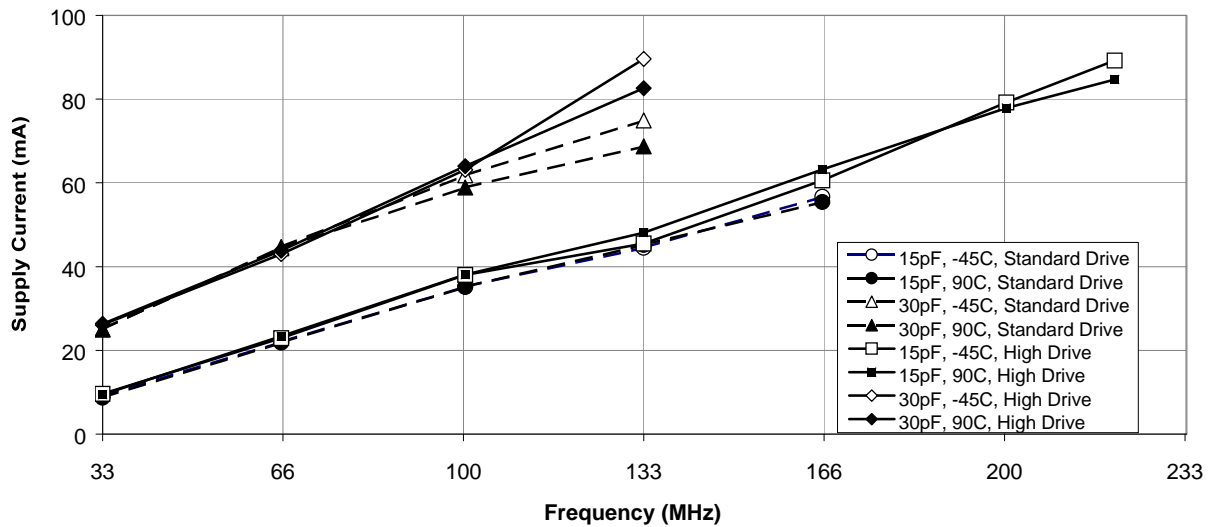


Figure 10. Typical 3.3 V Measured Cycle-to-cycle Jitter at 29 °C, versus Frequency, Drive Strength, and Loading

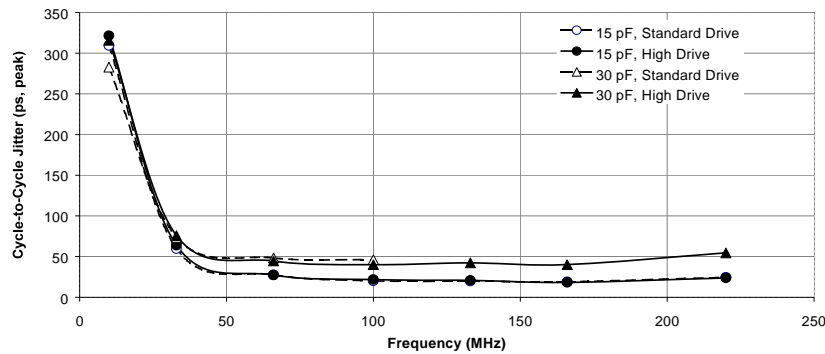


Figure 11. Typical 2.5 V Measured Cycle-to-cycle Jitter at 29 °C, versus Frequency, Drive Strength, and Loading

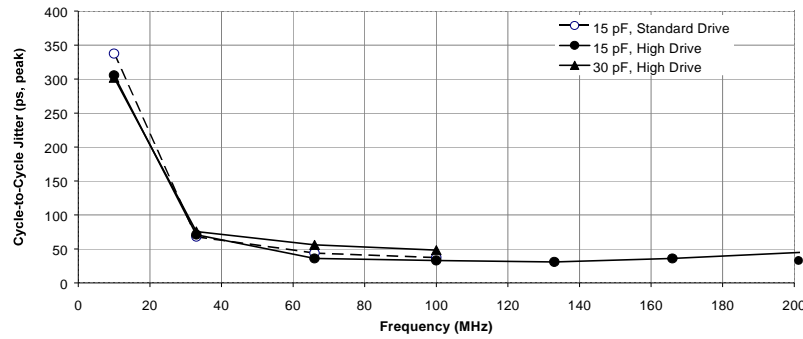


Figure 12. Typical 3.3 V Measured Period Jitter at 29 °C, versus Frequency, Drive Strength, and Loading

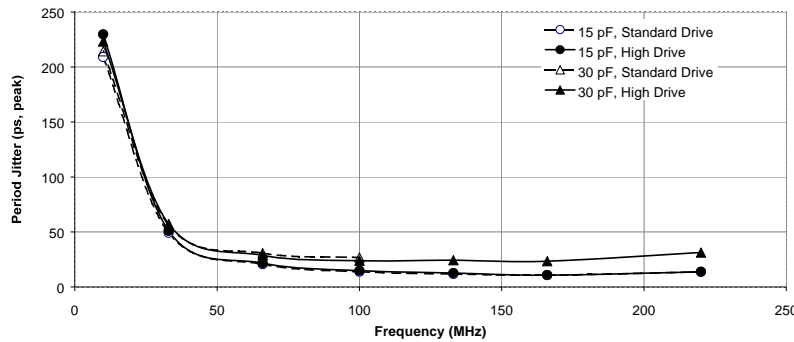


Figure 13. Typical 2.5 V Measured Period Jitter at 29 °C, versus Frequency, Drive Strength, and Loading

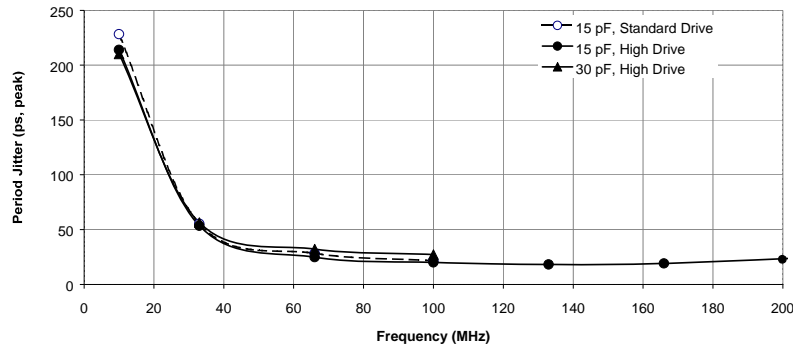
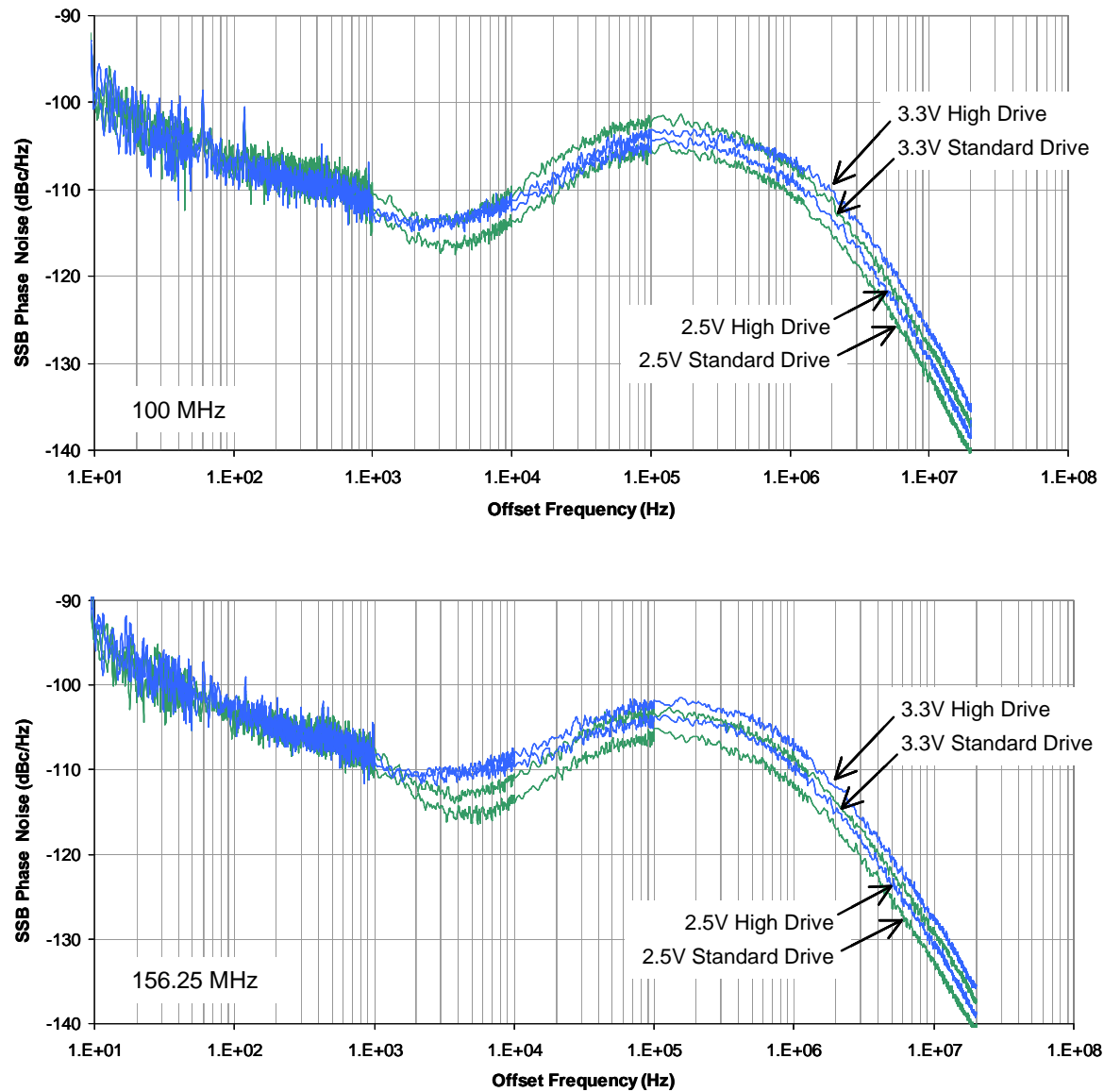


Figure 14. 100 MHz (top) and 156.25 MHz (bottom) Typical Phase-noise Data versus V_{DD} and Drive Strength^[10]



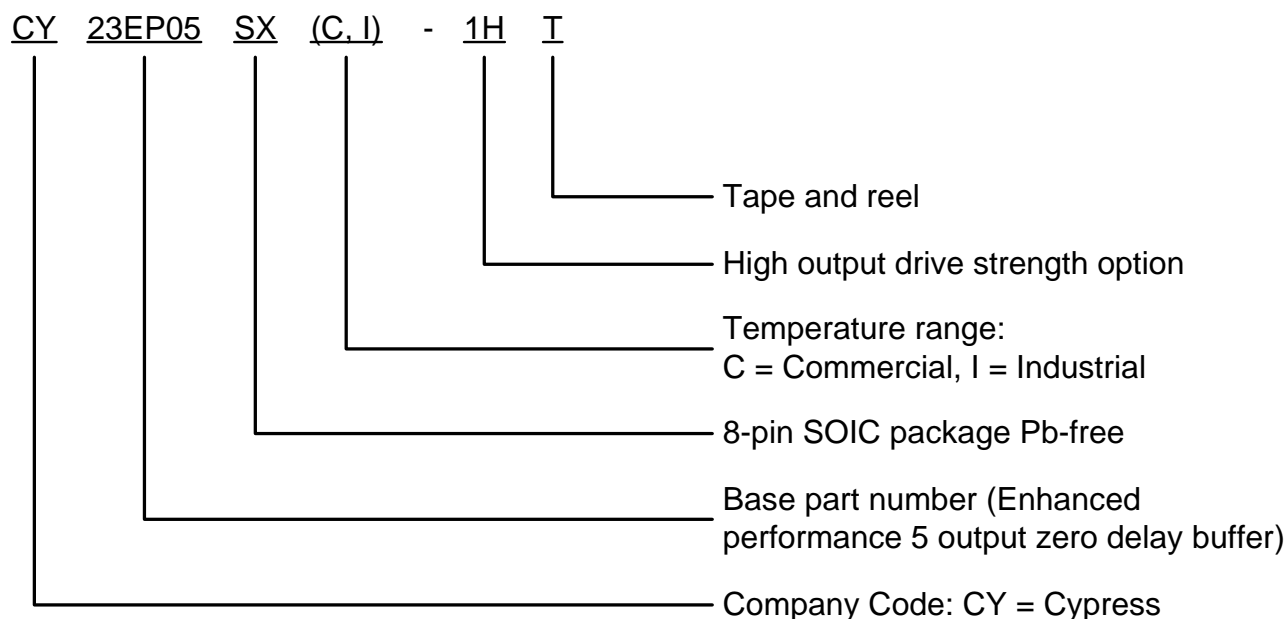
Note

10. Typical jitter is measured at 3.3 V or 2.5 V, 29°C, with all outputs driven into the maximum specified load. Further information regarding jitter specifications may be found in the application notes, "Understanding Data Sheet Jitter Specifications for Cypress Products."

Ordering Information

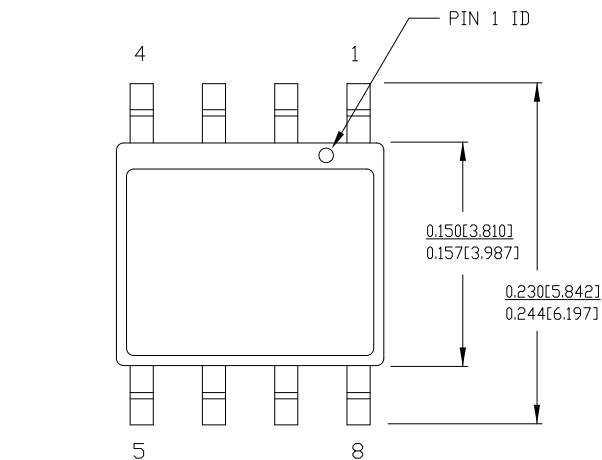
Ordering Code	Package Type	Operating Range
Pb-free		
CY23EP05SXC-1	8-pin 150-mil SOIC	Commercial
CY23EP05SXC-1T	8-pin 150-mil SOIC – tape and reel	Commercial
CY23EP05SXI-1	8-pin 150-mil SOIC	Industrial
CY23EP05SXI-1T	8-pin 150-mil SOIC – tape and reel	Industrial
CY23EP05SXC-1H	8-pin 150-mil SOIC	Commercial
CY23EP05SXC-1HT	8-pin 150-mil SOIC – tape and reel	Commercial
CY23EP05SXI-1H	8-pin 150-mil SOIC	Industrial
CY23EP05SXI-1HT	8-pin 150-mil SOIC – tape and reel	Industrial

Ordering Code Definitions



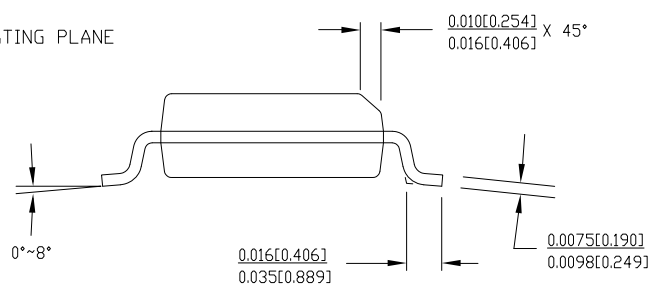
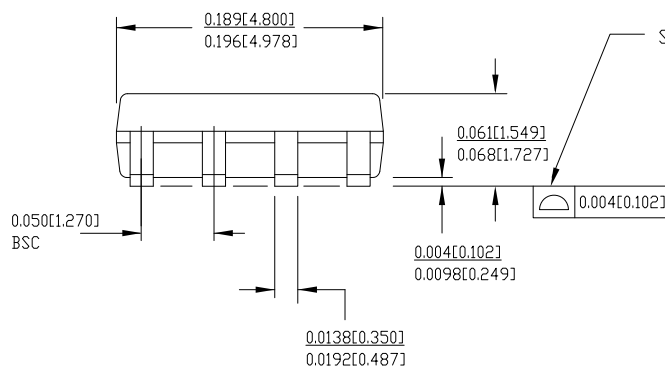
Package Drawing and Dimensions

Figure 15. 8-Pin (150-mil) SOIC S8



1. DIMENSIONS IN INCHES[MM] MIN. MAX.
2. PIN 1 ID IS OPTIONAL, ROUND ON SINGLE LEADFRAME RECTANGULAR ON MATRIX LEADFRAME
3. REFERENCE JEDEC MS-012
4. PACKAGE WEIGHT 0.07gms

PART #	
S08.15	STANDARD PKG.
SZ08.15	LEAD FREE PKG.



51-85066 *D

Acronyms

Table 1. Acronyms Used in this Document

Acronym	Description
AC	alternating current
DC	direct current
PCI	peripheral component interconnect
PLL	phase-locked loop
SDRAM	synchronous dynamic random access memory
SOIC	small-outline integrated circuit

Document Conventions

Units of Measure

Table 2. Units of Measure

Symbol	Unit of Measure
dBc	decibels relative to carrier
°C	degree Celsius
Hz	hertz
MHz	megahertz
μA	microampere
mA	milliampere
W	ohm
pF	picofarad
ps	picosecond
V	volt
W	watt

Document History Page

Document Title: CY23EP05 2.5 V or 3.3 V, 10-220-MHz, Low Jitter, 5 Output Zero Delay Buffer Document Number: 38-07759				
Revision	ECN	Orig. of Change	Submission Date	Description of Change
**	349620	RGL	See ECN	New datasheet
*A	401073	RGL	See ECN	Updated Delay vs. Load graph with standard drive data Added Phase-noise graph
*B	413826	RGL	See ECN	Minor Change: typo – changed from CY23EP05SXC-T to CY23EP05SXC-1T
*C	3273677	CXQ	06/07/2011	1) Added typical column to the Operating Conditions table. Included 3.3 V and 2.5 V typical specs for the two V_{DD} rows. 2) All BW, R_{OUT} , and Theta J_A specs are moved to typical column with only dashes left in the Min and Max columns. Removed the “(typical)” note from the description cells for these specs. 3) All other specs just have a dash for the new typical column cells. 4) Changed I_{II} spec in 3.3-V DC Electrical Specifications and 2.5-V DC Electrical Specifications tables from $\pm 10 \mu A$ max to $-10 \mu A$ min and $10 \mu A$ max. 5) Added typical column to the DC Electrical Specifications tables. Typical column is all kept dashes except for the first row V_{DD} (3.3 V or 2.5 V respectively). 6) Changed t_7 spec from ± 150 ps max to -150 ps min and 150 ps max (same for the 300 ps spec). 7) Updated package drawing to latest revision. 8) Added Ordering Code Definitions, Acronyms, Units sections.

Sales, Solutions, and Legal Information

Worldwide Sales and Design Support

Cypress maintains a worldwide network of offices, solution centers, manufacturer's representatives, and distributors. To find the office closest to you, visit us at [Cypress Locations](#).

Products

Automotive	cypress.com/go/automotive
Clocks & Buffers	cypress.com/go/clocks
Interface	cypress.com/go/interface
Lighting & Power Control	cypress.com/go/powerpsoc cypress.com/go/plc
Memory	cypress.com/go/memory
Optical & Image Sensing	cypress.com/go/image
PSoC	cypress.com/go/psoc
Touch Sensing	cypress.com/go/touch
USB Controllers	cypress.com/go/USB
Wireless/RF	cypress.com/go/wireless

PSoC Solutions

psoc.cypress.com/solutions

PSoC 1 | PSoC 3 | PSoC 5

© Cypress Semiconductor Corporation, 2005-2011. The information contained herein is subject to change without notice. Cypress Semiconductor Corporation assumes no responsibility for the use of any circuitry other than circuitry embodied in a Cypress product. Nor does it convey or imply any license under patent or other rights. Cypress products are not warranted nor intended to be used for medical, life support, life saving, critical control or safety applications, unless pursuant to an express written agreement with Cypress. Furthermore, Cypress does not authorize its products for use as critical components in life-support systems where a malfunction or failure may reasonably be expected to result in significant injury to the user. The inclusion of Cypress products in life-support systems application implies that the manufacturer assumes all risk of such use and in doing so indemnifies Cypress against all charges.

Any Source Code (software and/or firmware) is owned by Cypress Semiconductor Corporation (Cypress) and is protected by and subject to worldwide patent protection (United States and foreign), United States copyright laws and international treaty provisions. Cypress hereby grants to licensee a personal, non-exclusive, non-transferable license to copy, use, modify, create derivative works of, and compile the Cypress Source Code and derivative works for the sole purpose of creating custom software and or firmware in support of licensee product to be used only in conjunction with a Cypress integrated circuit as specified in the applicable agreement. Any reproduction, modification, translation, compilation, or representation of this Source Code except as specified above is prohibited without the express written permission of Cypress.

Disclaimer: CYPRESS MAKES NO WARRANTY OF ANY KIND, EXPRESS OR IMPLIED, WITH REGARD TO THIS MATERIAL, INCLUDING, BUT NOT LIMITED TO, THE IMPLIED WARRANTIES OF MERCHANTABILITY AND FITNESS FOR A PARTICULAR PURPOSE. Cypress reserves the right to make changes without further notice to the materials described herein. Cypress does not assume any liability arising out of the application or use of any product or circuit described herein. Cypress does not authorize its products for use as critical components in life-support systems where a malfunction or failure may reasonably be expected to result in significant injury to the user. The inclusion of Cypress' product in a life-support systems application implies that the manufacturer assumes all risk of such use and in doing so indemnifies Cypress against all charges.

Use may be limited by and subject to the applicable Cypress software license agreement.