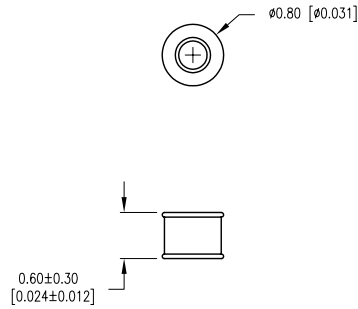


| | | | |
|-------------|-------------------------------------|------|------|
| PART NUMBER | GT-BG90 | REV. | A |
| DATE | E.C.N. NUMBER AND REVISION COMMENTS | | REV. |
| 12.27.11 | E.C.N. #10BRDR. | | A |



| ELECTRICAL SPECIFICATIONS | | |
|------------------------------|-------------------------|------------------|
| PARAMETER | VALUE | TEST CONDITION |
| D.C. FIRING VOLTAGE: | 90V±20%D.C. | (dv/dt 100V/S) |
| IMPULSE FIRING VOLTAGE: | 500V D.C.MAX. | (dv/dt 100V/μS) |
| IMPULSE CURRENT: | 10KA | (8/20μS) |
| D.C. HOLDOVER VOLTAGE: | 50V D.C.MAX. | (15mS MAX.) |
| A.C. DISCHARGE CURRENT: | 65A | (1S X 10 TIMES) |
| IMPULSE CURRENT SURGE LIFE: | 400 TIMES MIN. | (50 Hz x 9TIMES) |
| INSULATION RESISTANCE: | 10 ⁴ MΩ MIN. | (50 OR 100VDC) |
| INTER-ELECTRODE CAPACITANCE: | 1.5 PF MAX. | 1.0KHZ |

| ENVIRONMENTAL SPECIFICATIONS PER MIL-STD 202 | | | |
|--|---------|-----------|----------------|
| TEST | METHODE | CONDITION | RATING |
| VIBRATION TESTING: | 204B | C | 10-55HZ,06DA |
| SHOCK | 213A | C | 100G |
| HUMIDITY: | 103B | B | 95%RE.HUMIDITY |
| TEMPERATURE CYCLING: | 102A | C | -65 TO +125 °C |
| BAROMETRIC PRESSURE: | 105C | B | 50,000FT. |
| THERMAL SHOCK: | 107 | B | -65 TO +125 °C |
| SOLDERABILITY: | 208 | B | |

| RESPONSE TIME | |
|---------------|---------------------------|
| SURGE TYPE | (Rt MAX.) |
| 1Kv/mS | 1 x 10 ⁻⁵ sec. |
| 1Kv/μS | 1 x 10 ⁻⁸ sec. |
| 5Kv/μS | 1 x 10 ⁻⁹ sec. |

*UNLESS OTHERWISE SPECIFIED TOLERANCES PER DECIMAL PRECISION ARE: X=±1 (±0.039), X.X=±0.5 (±0.020), X.XX=±0.25 (±0.010), X.XXX=±0.127 (±0.005). LEAD SIZE=±0.05 (±0.002), LEAD LENGTH=±0.75 (±0.030). MIN= ^{+0.00}/_{-0.00} DECIMAL PRECISION MAX.= ^{+0.00}/_{-0.00} DECIMAL PRECISION



290 E. HELEN ROAD
 PALATINE, IL 60067-6976
 PHONE: +1.847.359.2790
 FAX: +1.847.359.6538
 WEB: WWW.LUMEX.COM

MEDIUM DUTY, CERAMIC BUTTON, AXIAL LEADED, SURGE ARRESTOR, 90 VDC.

THE SPECIFICATIONS MAY CHANGE AT ANY TIME WITHOUT NOTICE DUE TO NEW MATERIALS OR PRODUCT IMPROVEMENT.

CONFIDENTIAL INFORMATION
 THE INFORMATION CONTAINED IN THIS DOCUMENT IS THE PROPERTY OF LUMEX INC. EXCEPT AS SPECIFICALLY AUTHORIZED IN WRITING BY LUMEX INC., THE HOLDER OF THIS DOCUMENT SHALL KEEP ALL INFORMATION CONTAINED HEREIN CONFIDENTIAL AND SHALL PROTECT SAME IN WHOLE OR IN PART FROM DISCLOSURE AND DISSEMINATION TO ALL THIRD PARTIES.

| | | | |
|--------|-----------|-----------|----|
| DATE: | 12.27.11 | DRAWN BY: | AB |
| PAGE: | 1 OF 1 | CHKD BY: | DT |
| SCALE: | NTS | APRVD BY: | SS |
| UNIT: | mm [INCH] | | Ⓢ |