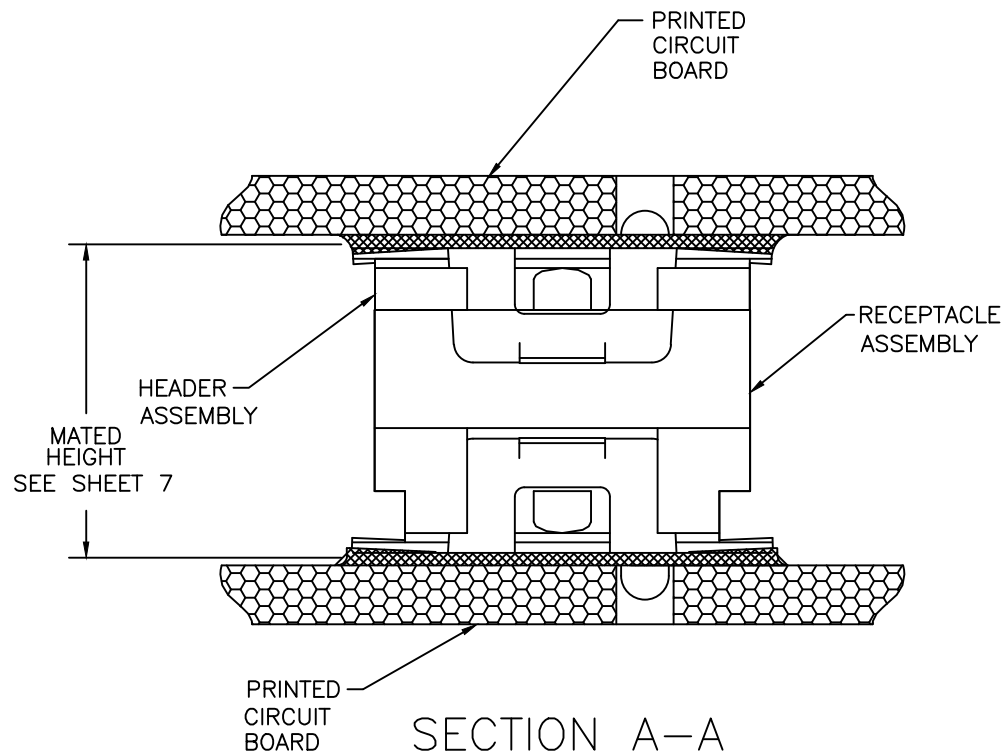
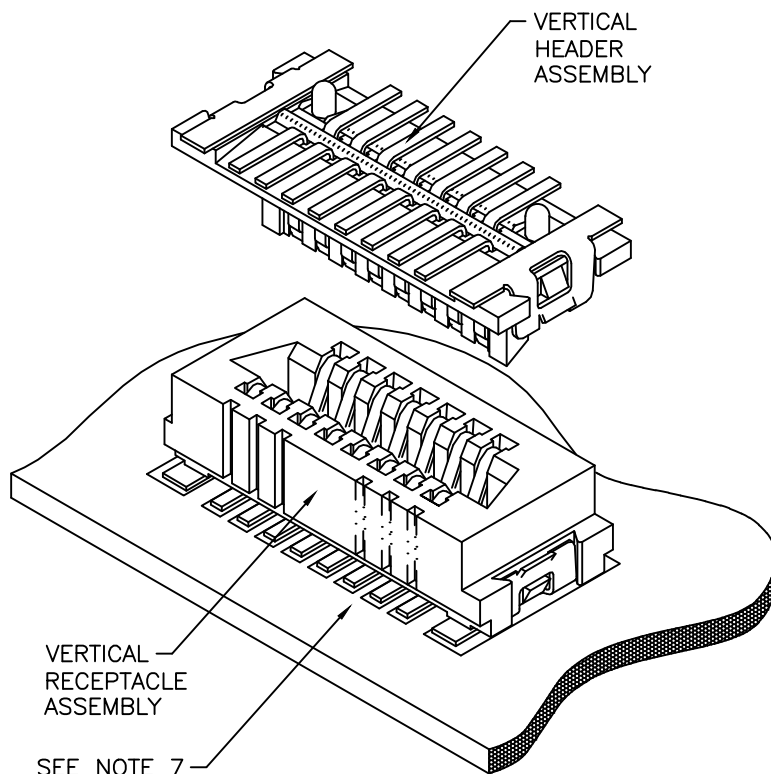


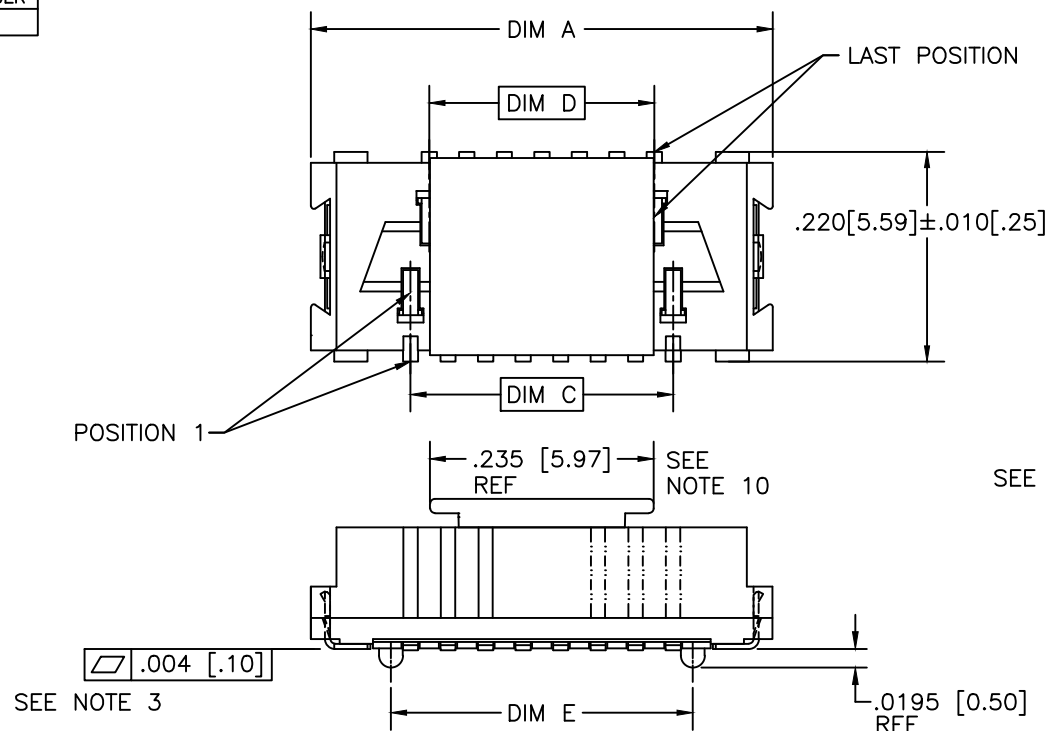
PRODUCT NUMBER
SEE TABLE



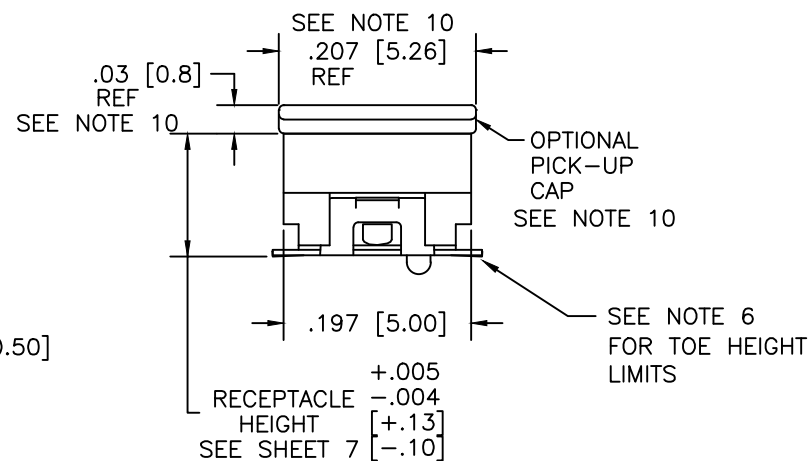
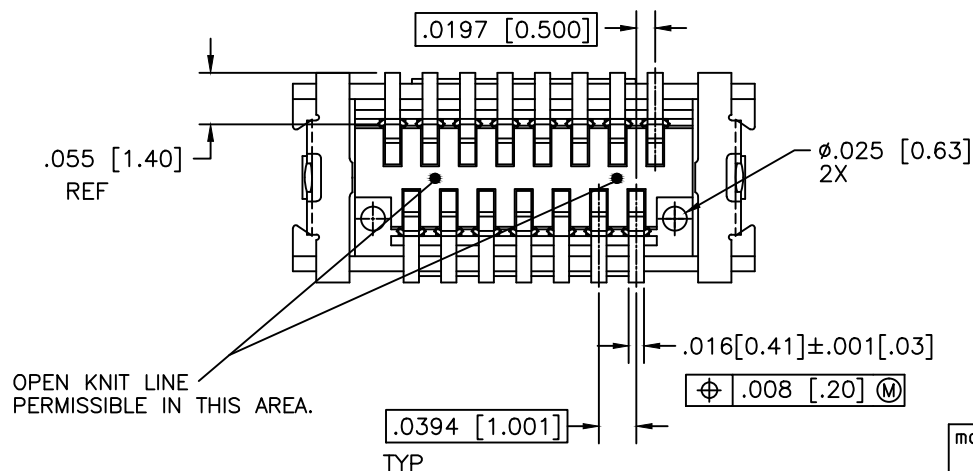
SECTION A-A
ROTATED 90°
N.T.S.

mat'l. code				surface ISO 1302	tolerance ISO 406 ISO 1101	projection	product family CONAN®
ltr	ecn no	dr	date	tolerances unless otherwise specified		 INCH/MM	title CONAN® CONNECTOR ASSEMBLY
AG	ELX-N-14208	GM	03/07/13	angles	linear		
AB	M05-0110	MHT	05/26/05	0°±2°	linear	scale 5:1	dwg no 91900
AC	M06-0232	AGS	06/12/06	dr	R.SEIPLE	11/13/91	sheet 1 of 7 size A3
AD	M06-0373	MHT	09/26/06	enr	D.HORCHLER	01/10/92	type Product Customer Drawing
AE	M08-0012	AGS	01/11/08	chr	D.HORCHLER	01/10/92	
AF	M08-0287	MHT	10/02/08	appd	D.HORCHLER	01/10/92	
sheet	revision	AG	AG	AG	AG	AG	
index	sheet	1	2	3	4	5	6

PRODUCT NUMBER
SEE TABLE



SEE NOTE 3



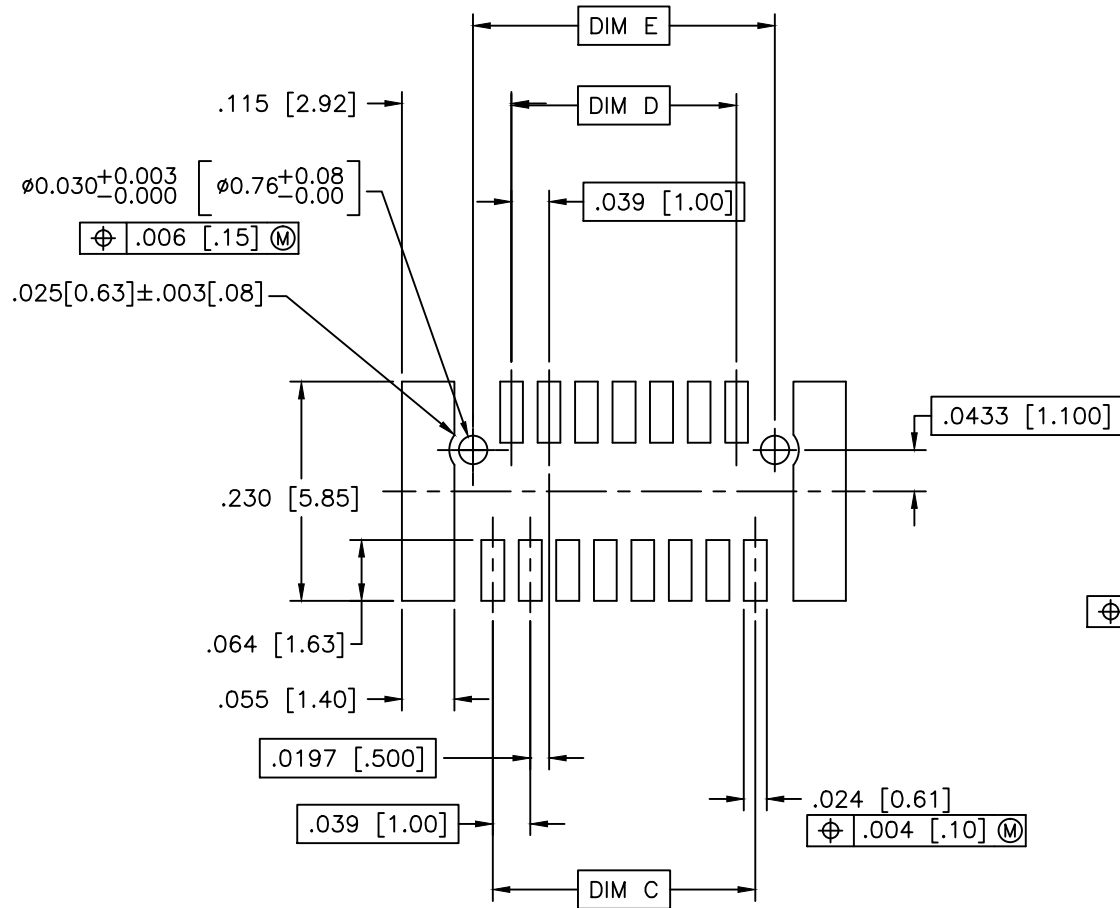
mat'l. code				surface ISO 1302	tolerance ISO 406 ISO 1101	projection INCH/MM	product family CONAN®
ltr	ecn no	dr	date	tolerances unless otherwise specified		scale 5:1	title CONAN® CONNECTOR ASSEMBLY
AG				angles	linear		
				0°±2'			
		dr	R.SEIPLE	11/13/91		FCI	dwg no 91900
		enr	D.HORCHLER	01/10/92			
		chr	D.HORCHLER	01/10/92			
		appd	D.HORCHLER	01/10/92			
sheet index	revision sheet						type Product Customer Drawing



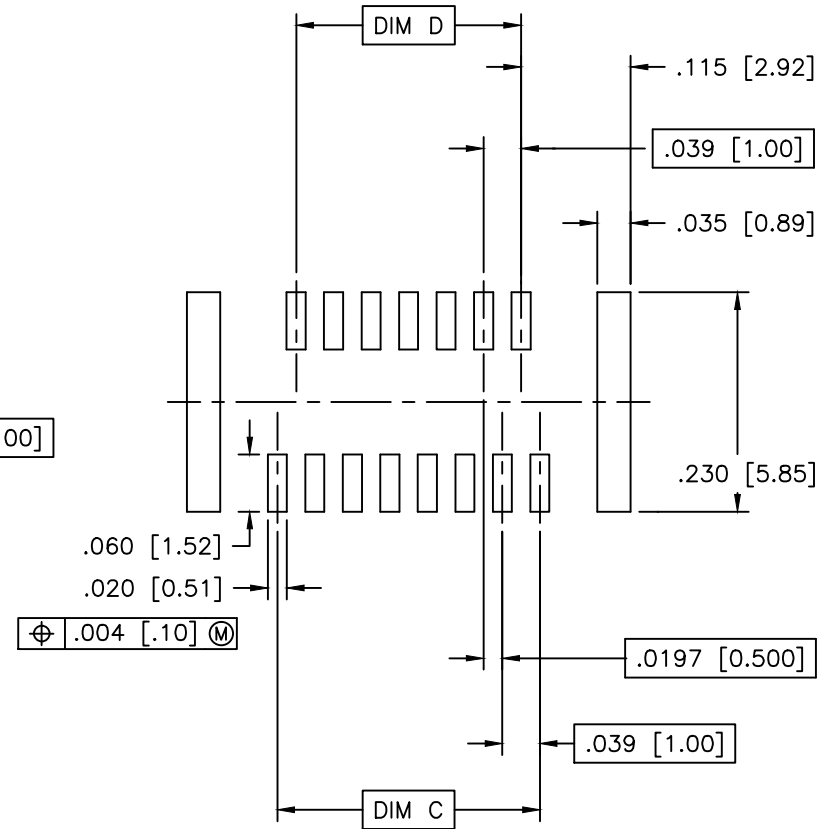
FCIconnect.com

Copyright FCI

PRODUCT NUMBER
SEE TABLE



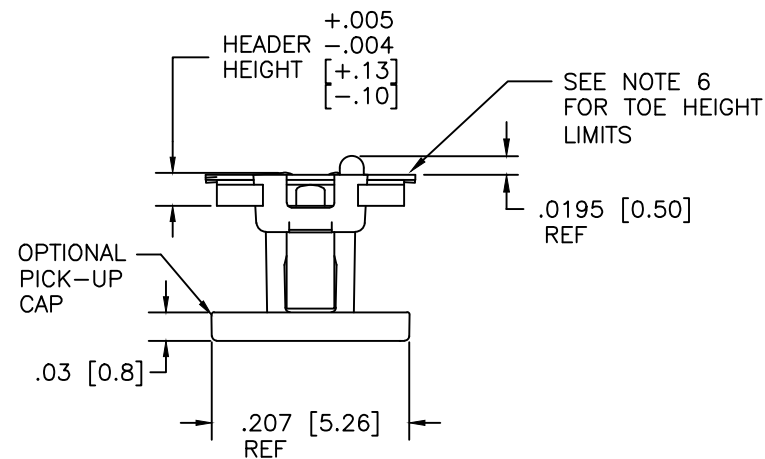
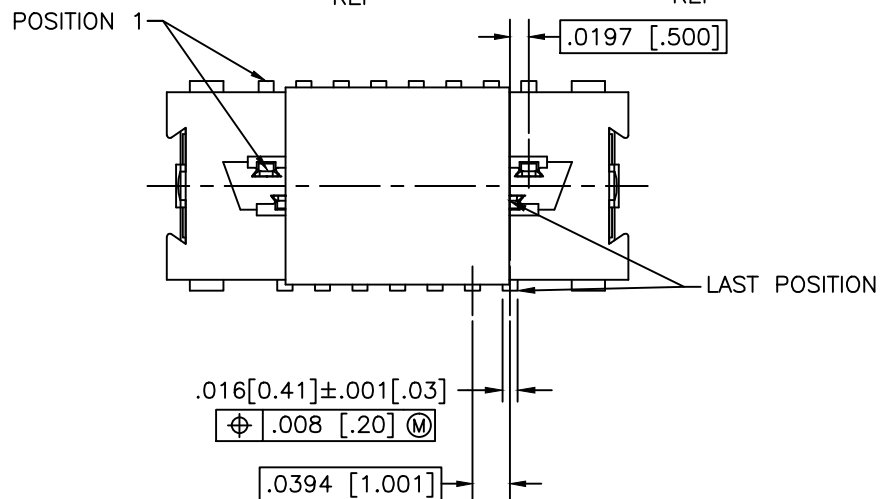
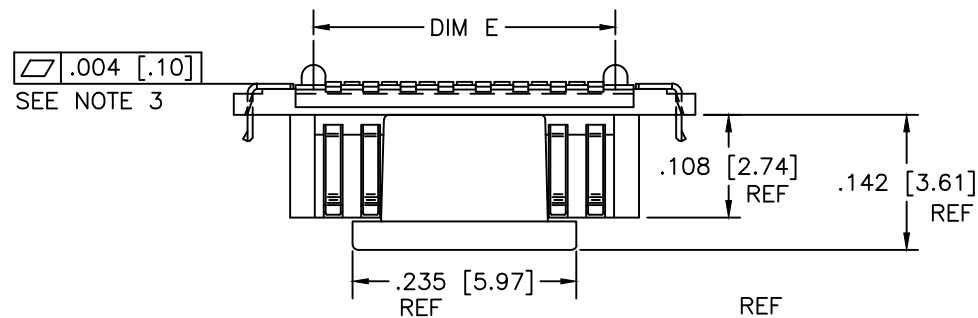
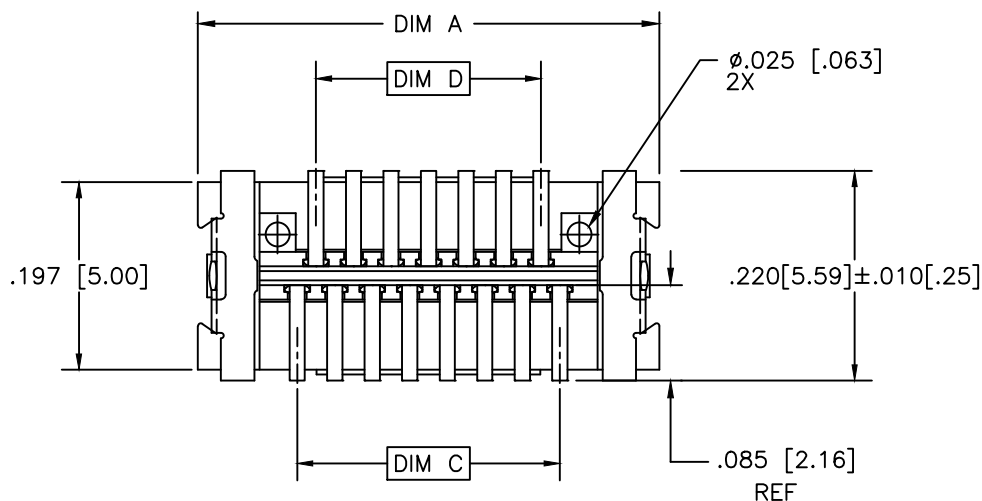
RECOMMENDED
PAD LAYOUT



RECOMMENDED
STENCIL LAYOUT
FOR RECEPTACLE

mat'l. code				surface ISO 1302	tolerance ISO 406 ISO 1101	projection 	product family CONAN®			
ltr	ecn no	dr	date	tolerances unless otherwise specified		INCH/MM	title CONAN® CONNECTOR ASSEMBLY			
AG				angles	linear					
				0°±2°						
				dr	R.SEIPLE	11/13/91	dwg no 91900			
				enr	D.HORCHLER	01/10/92				
				chr	D.HORCHLER	01/10/92	type Product Customer Drawing			
				appd	D.HORCHLER	01/10/92				
sheet index	revision sheet									

PRODUCT NUMBER
SEE TABLE

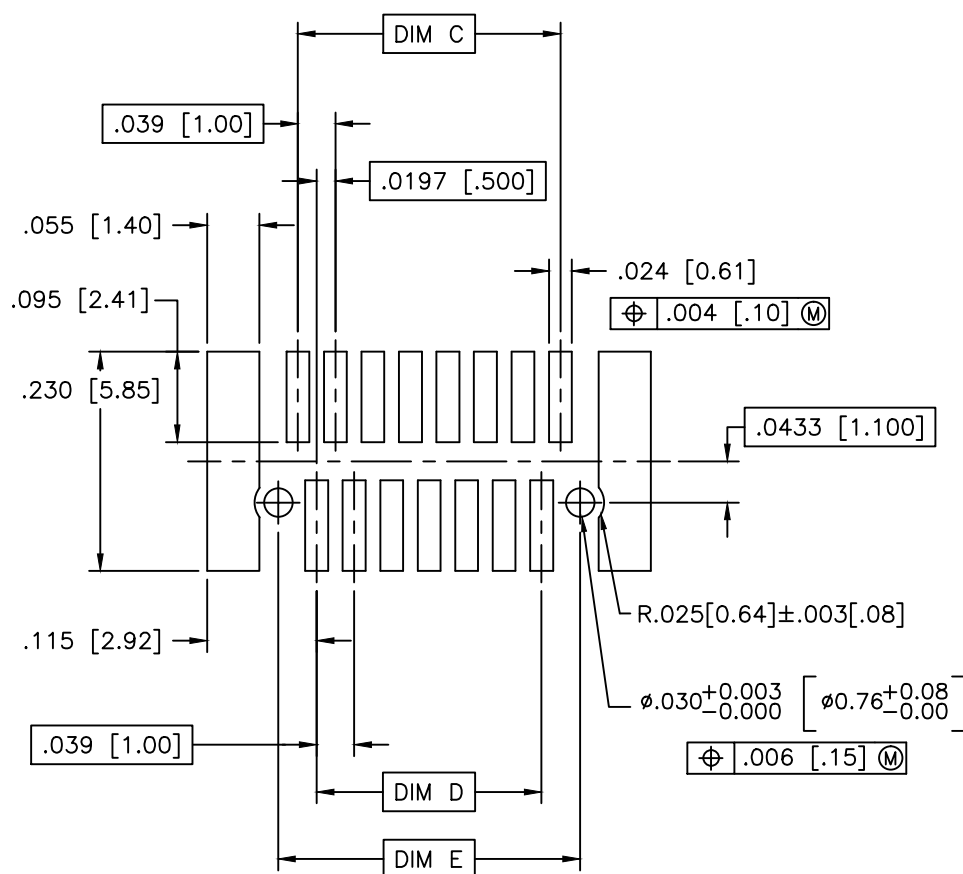
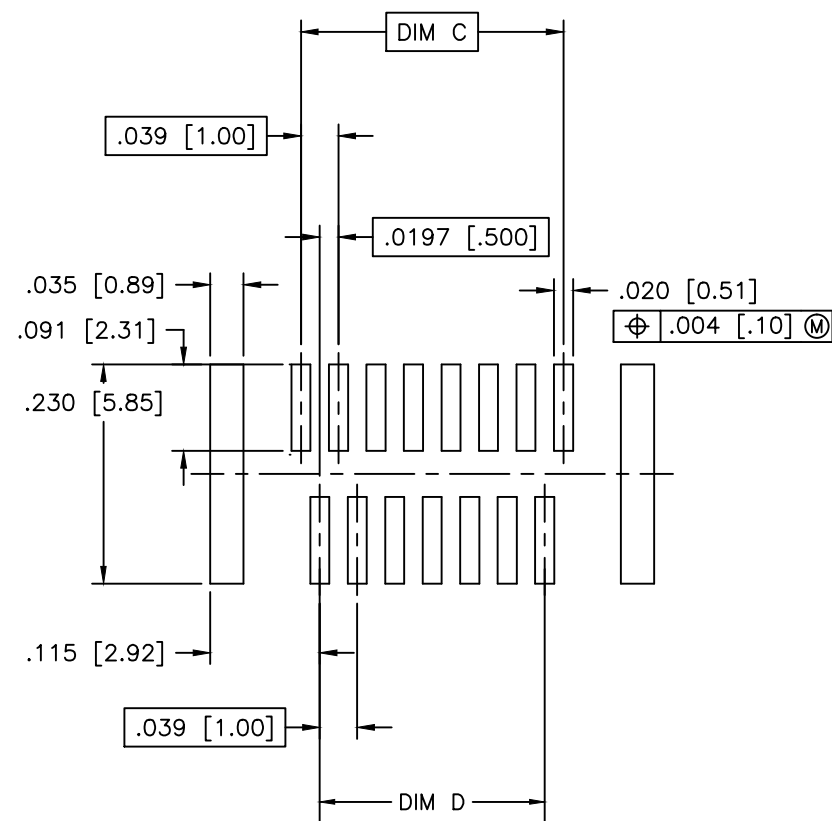




mat'l. code				surface ISO 1302	tolerance ISO 406 ISO 1101	projection INCH/MM	product family CONAN®
ltr	ecn no	dr	date	tolerances unless otherwise specified		scale 5:1	title CONAN® CONNECTOR ASSEMBLY
AG				angles	linear		
				0° ± 2°			
		dr	R.SEIPLE	11/13/91			dwg no
		enr	D.HORCHLER	01/10/92			91900
		chr	D.HORCHLER	01/10/92			sheet 4 of 7 size
		appd	D.HORCHLER	01/10/92			A3
sheet index	revision sheet						type Product Customer Drawing



FCIconnect.com

Copyright FCI

PRODUCT NUMBER
SEE TABLERECOMMENDED
PAD LAYOUTRECOMMENDED
STENCIL LAYOUT
FOR HEADER

mat'l. code				surface ISO 1302 <input checked="" type="checkbox"/>		tolerance ISO 406 ISO 1101		projection 		product family CONAN®					
ltr	ecn no	dr	date	tolerances unless otherwise specified						INCH/MM	title CONAN® CONNECTOR ASSEMBLY				
AG				angles	linear	XXX±.01/XX±0.3									
						XXX±.005/XXX±0.13									
				0°±2'		XXX±.0020/XXX±0.051				scale 5:1	dwg no 91900 sheet 5 of 7 size A3				
		dr	R.SEIPLE	11/13/91					type Product Customer Drawing						
		enr	D.HORCHLER	01/10/92											
		chr	D.HORCHLER	01/10/92											
		appd	D.HORCHLER	01/10/92											
sheet index	revision sheet														

PRODUCT NUMBER	POS	DIM "A"	DIM "C"	DIM "D"	DIM "E"
919TC-WXY09	9	.366 [9.30]	.157 [4.00]	.118 [3.00]	.1990 [5.055]
-WXY09LF					
-WXY11	11	.406 [10.30]	.197 [5.00]	.157 [4.00]	.2380 [6.045]
-WXY11LF					
-WXY15	15	.484 [12.30]	.276 [7.00]	.236 [6.00]	.3170 [8.052]
-WXY15LF					
-WXY21	21	.602 [15.30]	.394 [10.00]	.354 [9.00]	.4350 [11.049]
-WXY21LF					
-WXY25	25	.681 [17.30]	.472 [12.00]	.433 [11.00]	.5140 [13.056]
-WXY25LF					
-WXY31	31	.800 [20.30]	.591 [15.00]	.551 [14.00]	.6320 [16.053]
-WXY31LF					
-WXY41	41	.996 [25.30]	.787 [20.00]	.748 [19.00]	.8290 [21.057]
-WXY41LF					
-WXY51	51	1.193 [30.30]	.984 [25.00]	.945 [24.00]	1.0260 [26.060]
-WXY51LF					
-WXY69	69	1.547 [39.30]	1.339 [34.00]	1.299 [33.00]	1.3800 [35.052]
-WXY69LF					

NOTES:

1. MATERIALS:

RECEPTACLE HOUSING - LCP, UL-94V-0. COLOR: NATURAL.

RECEPTACLE TERMINALS - COPPER ALLOY,
PLATED WITH 15u"/.38u GXT™ IN CONTACT AREA
AND 100u"/2.54u Sn ON SOLDER LEGS WITH
AN OVERALL 50u"/1.27u Ni UNDERPLATE.

HEADER HOUSING - LCP, UL-94V-0. COLOR: NATURAL.

HEADER TERMINALS - COPPER ALLOY,
PLATED WITH 15u"/.38u GXT™ IN CONTACT AREA
AND 100u"/2.54u Sn ON SOLDER LEGS WITH
AN OVERALL 50u"/1.27u Ni UNDERPLATE.

RETENTION DEVICE - BRASS,
PLATED WITH 100u"/2.54u Sn OVER NICKEL.

2. REFERENCE GS-12-006 FOR PRODUCT PERFORMANCE DATA.

3. SEE TA-774 FOR FURTHER DESCRIPTION OF HOW THIS DIMENSION IS APPLIED.

4. PICK AND PLACE CAP OR TAPE IS ONLY AVAILABLE WITH OPTION 3 PACKAGING. (PSA ADHESIVE SEALED). ALSO, PSA PACKAGING REQUIRES A PICK AND PLACE CAP.

5. RECOMMENDED SOLDER PASTE THICKNESS IS .006 TO .008 INCHES THICK.

6. THE TOE HEIGHT OF THE SOLDER TAIL SHALL BE MEASURED FROM THE LOWEST POINT OF THE .004 CO-PLANARITY GRAVITY PLANE. THIS MEASUREMENT IS NOT TO EXCEED A WINDOW OF .000 TO .007 INCHES.

7. THREE SLOTS MAY BE LOCATED AT EITHER END OF HOUSING.

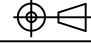
8. 5.50mm MATED HEIGHT IS ONLY AVAILABLE IN 9, 15 AND 31 POS.

9. 7.50mm MATED HEIGHT IS ONLY AVAILABLE IN 9 POS.

10. APPLIES TO 91921-3XYZZ AND 91931- 3XYZZ OPTIONS ONLY.

11. THE HOUSING WILL WITHSTAND EXPOSURE TO 260°C PEAK TEMPERATURE FOR 30 SECONDS IN A CONVECTION INFRA RED OR VAPOR PHASE REFLOW OVEN. SEE APPLICATION/PROCEDURES IF THEY ARE AVAILABLE

13. PRODUCT WITH "LF" AT THE END MEETS EUROPEAN UNION DIRECTIVES AND OTHER COUNTRY REGULATION AS DESCRIBED IN GS-22-008.

mat'l. code				surface ISO 1302	tolerance ISO 406 ISO 1101	projection 	product family CONAN®			
ltr	ecn	no	dr	date	tolerances unless otherwise specified		title			
AG					angles	linear	CONAN® CONNECTOR ASSEMBLY			
							dwg no			
							sheet 6 of 7 size			
							91900			
							type Product Customer Drawing			
sheet	revision									
index	sheet									



FCIconnect.com

Copyright FCI

PRODUCT NUMBER
SEE TABLECONAN[®] ASSEMBLY PART NUMBER

919 T C - W X Y ZZ LF

LEAD FREE OPTION
SEE NOTE 12

TYPE	T
HEADER WITH NO PEGS	0
HEADER WITH PEGS	1
RECEPTACLE WITH NO PEGS	2
RECEPTACLE WITH PEGS	3

PICK AND PLACE CAP OR TAPE (NOTE 4)	C
WITHOUT CAP OR TAPE	0
WITH CAP	1
WITH TAPE (RECEPTACLE ONLY)	2

PACKAGING	W
TUBE	2
PRESSURE SEALED TAPE & REEL	3

NOTE 4

Y	HEADER HEIGHT	RECEPTACLE HEIGHT	MATED HEIGHT
1	.034 [.86]	.129 [3.28]	.163 [4.15]
2	.048 [1.23]	SEE Y=1 FOR ALL RECEPTACLES	.177 [4.50]
3	.068 [1.73]		.197 [5.00]
4	.107 [2.72]		.236 [6.00]
5	.1465 [3.721]		.276 [7.00]
6	.088 [2.23]		.216 [5.50]
7	.1665 [4.229]		.296 [7.52]

* NOTE 8
* * NOTE 9

X	PLATING
1	15u"/.38u GXT [™]
2	30u"/.76u GXT [™]

ZZ	NUMBER OF POSITIONS
09	9
11	11
15	15
21	21
25	25
31	31
41	41
51	51
69	69

EXAMPLE: 91921-31125LF
IS A CONAN[®] RECEPTACLE ASSEMBLY,
HAVING NO PEGS AND WITH A PICK AND PLACE CAP.
IT ALSO HAS GXT[™] PLATING, IS .13 [3.2] HIGH AND 25
POSITIONS AND IS PACKAGED IN PRESSURE SEALED TAPE,
REEL AND LEAD FREE.

mat'l. code				surface ISO 1302	tolerance ISO 406 ISO 1101	projection 	product family CONAN [®]
ltr	ecn no	dr	date	tolerances unless otherwise specified		INCH/MM scale 5:1	title CONAN [®] CONNECTOR ASSEMBLY
AG				angles	linear		
				0°±2'			
		dr	R.SEIPLE	11/13/91			dwg no 91900
		enr	D.HORCHLER	01/10/92			
		chr	D.HORCHLER	01/10/92			
		appd	D.HORCHLER	01/10/92			
sheet index	revision sheet						type Product Customer Drawing