

### INTRODUCTION:

Adam Tech Solder Cup High Density D-Sub connectors are a popular interface for many I/O applications. Offered in 15, 26, 44, 62 and 78 positions, they are a good choice for a low cost industry standard high density connection. Adam Tech connectors are manufactured with precision stamped contacts offering a choice of contact plating and a wide selection of mating and mounting options.

### FEATURES:

- High Density pin count in standard size shell
- Industry standard compatibility
- Durable metal shell design
- Precision formed bifurcated contacts
- Mating and mounting options

### MATING CONNECTORS:

Adam Tech high density D-Subminiatures and all industry standard high density D-Subminiature connectors.

### SPECIFICATIONS:

#### Material:

Insulator: PBT, 30% glass reinforced, rated UL94V-0  
Insulator Colors: Black (White optional)  
Contacts: Phosphor Bronze  
Shell: Steel, Tin or Zinc plated  
Hardware: Brass, Nickel plated

#### Contact Plating:

Gold Flash (15 and 30  $\mu$ m Optional) over Nickel underplate.

#### Electrical:

Operating voltage: 250V AC / DC max.  
Current rating: 5 Amps max.  
Contact resistance: 20 m $\Omega$  max. initial  
Insulation resistance: 5000 M $\Omega$  min.  
Dielectric withstanding voltage: 1000V AC for 1 minute

#### Mechanical:

Insertion force: 0.75 lbs max  
Extraction force: 0.44 lbs min

#### Temperature Rating:

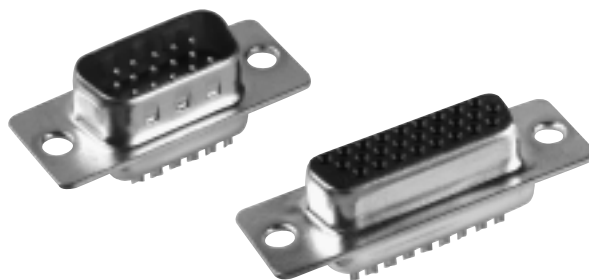
Operating temperature: -65°C to +125°C

### PACKAGING:

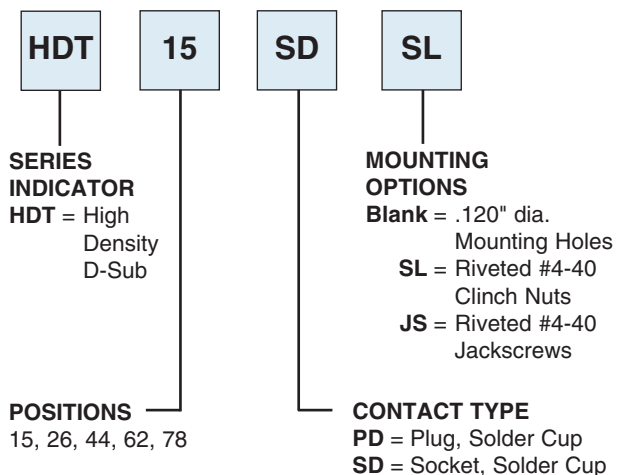
Anti-ESD plastic trays

### APPROVALS AND CERTIFICATIONS:

UL Recognized File No. E224053  
CSA Certified File No. LR1578596



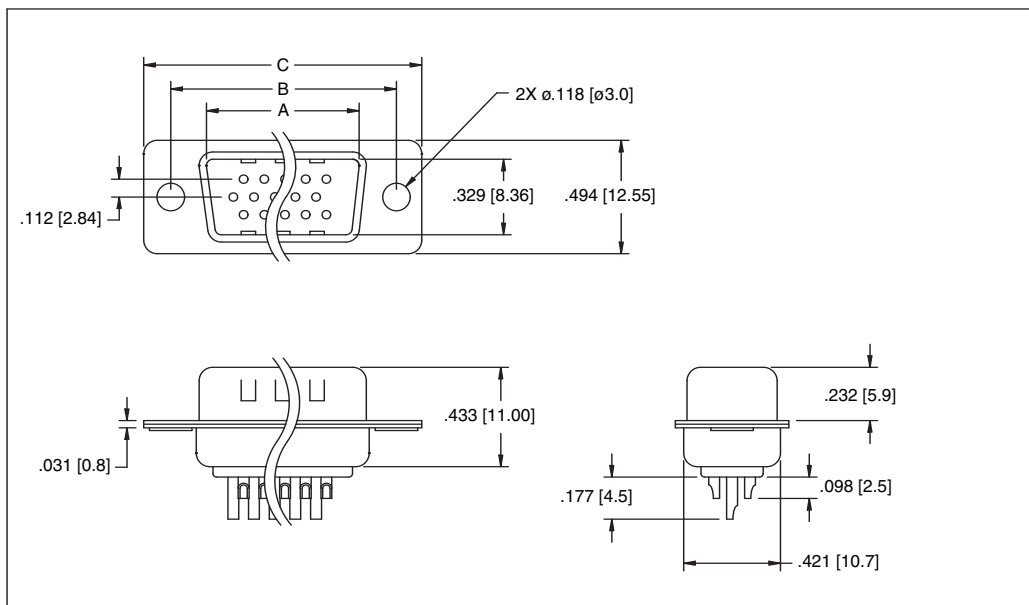
### ORDERING INFORMATION



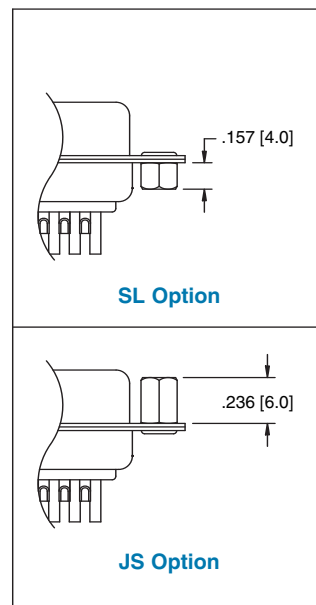
### OPTIONS:

Add designator(s) to end of part number  
30 = 30  $\mu$ m gold plating in contact area  
RC = RoHS compliant lead-free product with Hi-Temp insulator

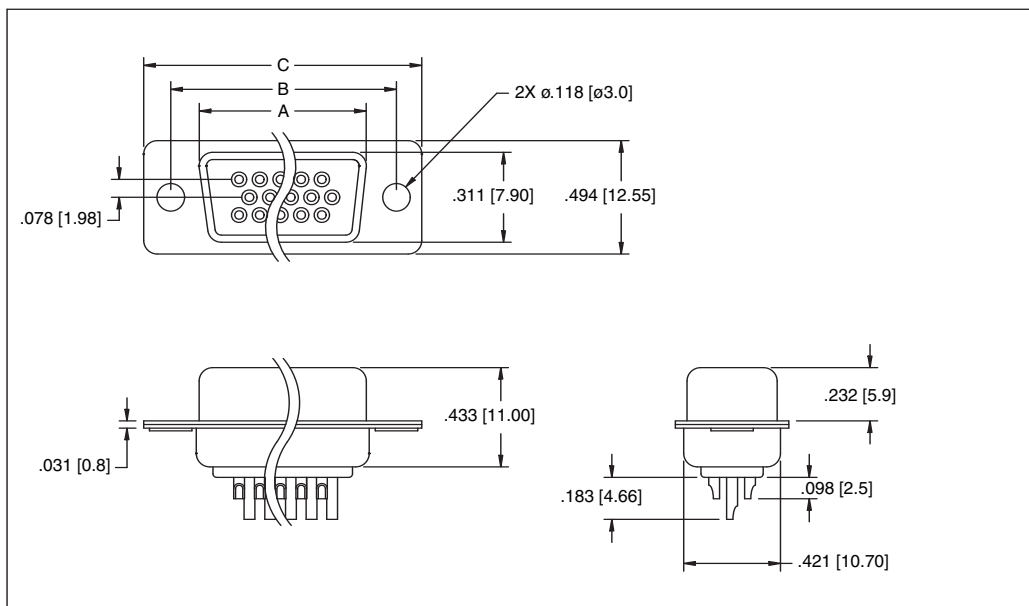
### PLUG



### MOUNTING OPTIONS



### SOCKET



Unit: Inch / mm

POSITIONS	Socket Dimensions			POSITIONS	Plug Dimensions		
	A	B	C		A	B	C
15	.643 (16.33)	.984 (24.99)	1.213 (30.81)	15	.666 (16.92)	.984 (24.99)	1.213 (30.81)
26	.971 (24.66)	1.312 (33.32)	1.541 (39.14)	26	.994 (25.25)	1.312 (33.32)	1.541 (39.14)
44	1.511 (38.38)	1.852 (47.04)	2.088 (53.04)	44	1.534 (38.96)	1.852 (47.04)	2.008 (53.04)
62	2.159 (54.84)	2.500 (63.50)	2.729 (69.32)	62	2.182 (55.42)	2.500 (63.50)	2.729 (69.32)
78	2.064 (52.43)	2.406 (61.11)	2.635 (66.93)	78	2.079 (52.81)	2.406 (61.11)	2.635 (66.93)

### INTRODUCTION:

Adam Tech Crimp and Poke High Density D-Sub connectors are a popular interface for many I/O applications. Offered in 15, 26, 44, 62 and 78 positions they are a low cost alternative to soldering a high density connector to cable. Contacts are crimped onto discrete wires and pushed into the connector body. The connector is comprised of a metal shell and plastic insulator and is available with a variety of mating options. The contacts are precision stamped and are available in a variety of platings.

### FEATURES:

- High Density in standard size shell
- Low cost no solder alternative
- Industry standard compatibility
- Durable metal shell design
- Precision formed bifurcated contacts
- Variety of Mating and mounting options

### MATING CONNECTORS:

Adam Tech high density D-Subminiatures and all industry standard high density D-Subminiature connectors.

### SPECIFICATIONS:

#### Material:

Insulator: PBT, 30% glass reinforced, rated UL94V-0  
Insulator Colors: Black (White optional)  
Contacts: Phosphor Bronze  
Shell: Steel, Tin or Zinc plated  
Hardware: Brass, Nickel plated

#### Contact Plating:

Gold Flash (15 and 30  $\mu$ m Optional) over Nickel underplate.

#### Electrical:

Operating voltage: 250V AC / DC max.  
Current rating: 5 Amps max.  
Contact resistance: 20 m $\Omega$  max. initial  
Insulation resistance: 5000 M $\Omega$  min.  
Dielectric withstanding voltage: 1000V AC for 1 minute

#### Mechanical:

Insertion force: 0.75 lbs max  
Extraction force: 0.44 lbs min  
Recommended wire size: 22 to 28 Awg

#### Temperature Rating:

Operating temperature: -65°C to +125°C

### PACKAGING:

Anti-ESD plastic trays

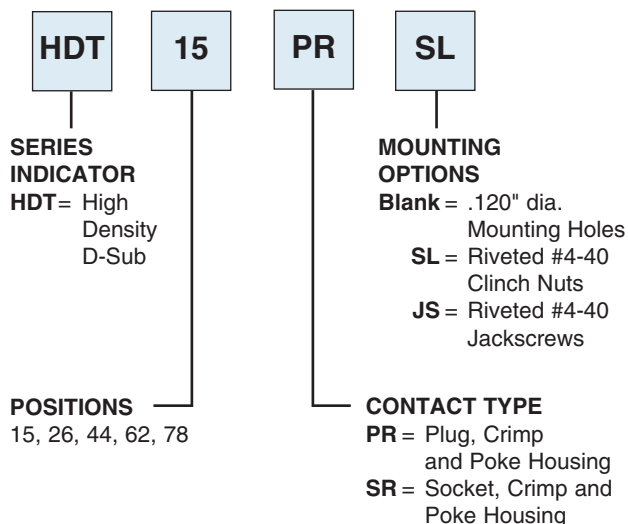
### APPROVALS AND CERTIFICATIONS:

UL Recognized File No. E224053  
CSA Certified File No. LR1578596

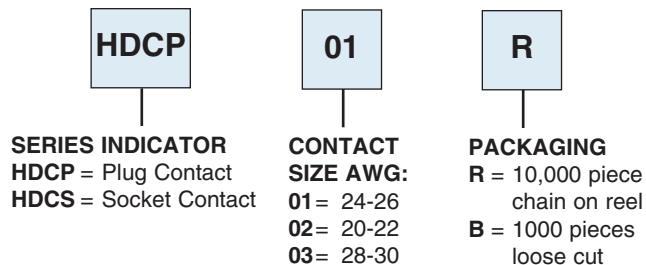


## ORDERING INFORMATION

### HOUSING



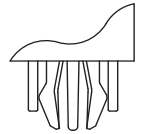
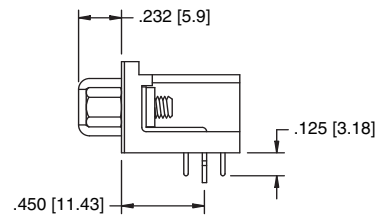
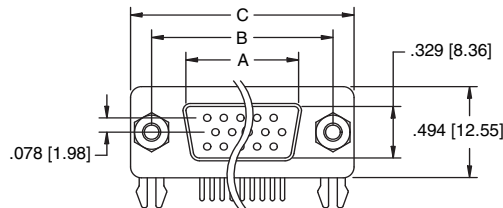
### CRIMP CONTACT



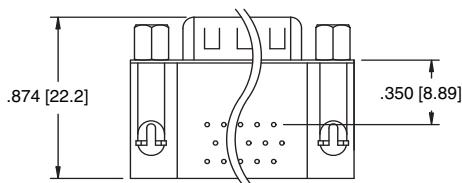
### OPTIONS:

Add designator(s) to end of part number  
**30** = 30  $\mu$ m gold plating in contact area

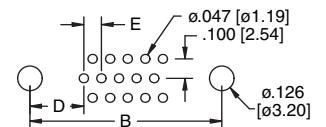
#### PLUG



Four Prong Boardlock Option

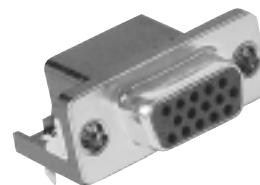
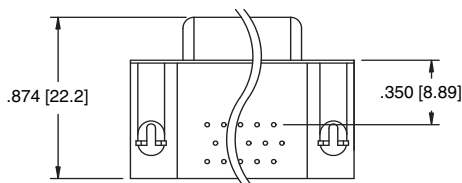
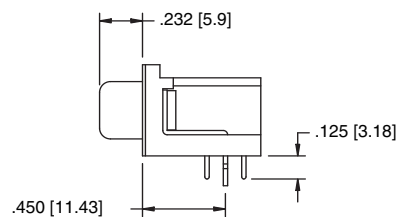
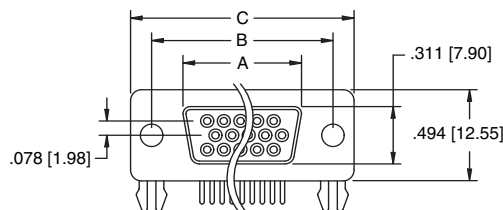


HDL15-PL-B

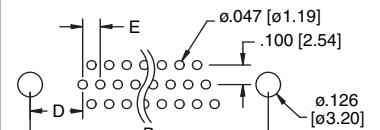


15 Position PCB Layout

#### SOCKET

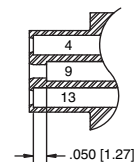


HDL15-SL-B



26, 44, 62 Position PCB Layout

#### Hi Density Video Graphics Connector



HDVG15-SL-B



Unit: Inch / mm

Positions	SOCKET	PLUG	Dimensions			
	A	A	B	C	D	E
15	.643 (16.33)	.666 (16.92)	.984 (24.99)	1.213 (30.81)	.277 (7.04)	.090 (2.29)
26	.971 (24.66)	.994 (25.25)	1.312 (33.32)	1.541 (39.14)	.271 (6.88)	.090 (2.29)
44	1.511 (38.38)	1.534 (38.96)	1.852 (47.04)	2.088 (53.04)	.271 (6.88)	.090 (2.29)
62	2.159 (54.84)	2.182 (55.42)	2.500 (63.50)	2.729 (69.32)	.276 (7.00)	.095 (2.41)
78	2.064 (52.43)		2.406 (61.11)	2.635 (66.93)	.300 (7.63)	.095 (2.41)

#### INTRODUCTION:

Adam Tech Right Angle PCB High Density D-Sub connectors are a popular interface for many I/O applications. Offered in 15, 26, 44, 62 and 78 positions they are a good choice for a low cost industry standard hi density connection. Adam Tech connectors are manufactured with precision stamped contacts offering a choice of contact plating and a wide selection of mating and mounting options.

#### FEATURES:

- High Density in standard size shell
- Industry standard compatibility
- Durable metal shell design
- Precision formed bifurcated contacts
- Variety of Mating and mounting options

#### MATING CONNECTORS:

Adam Tech high density D-Subminiatures and all industry standard high density D-Subminiature connectors.

#### SPECIFICATIONS:

##### Material:

Insulator: PBT, 30% glass reinforced, rated UL94V-0

Insulator Colors: HDL Series: Black

HDVG Series: Blue

Contacts: Phosphor Bronze

Shell: Steel, Tin or Zinc plated

Hardware: Brass, Nickel plated

##### Contact Plating:

Gold Flash (15 and 30  $\mu$ in Optional) over Nickel underplate.

##### Electrical:

Operating voltage: 250V AC / DC max.

Current rating: 5 Amps max.

Contact resistance: 20 m $\Omega$  max initial

Insulation resistance: 5000 M $\Omega$  min.

Dielectric withstanding voltage: 1000V AC for 1 minute

##### Mechanical:

Insertion force: 0.75 lbs max

Extraction force: 0.44 lbs min

##### Temperature Rating:

Operating temperature: -65°C to +125°C

#### PACKAGING:

Anti-ESD plastic trays

#### APPROVALS AND CERTIFICATIONS:

UL Recognized File No. E224053

CSA Certified File No. LR1578596



#### ORDERING INFORMATION

**HDL**

**15**

**SL**

**B**

##### SERIES INDICATOR

**HDL** = High Density D-Sub

**HDVG** = High Density VESA connector with recessed #9 pin and blue insulator

##### MOUNT OPTIONS

**A** = #4-40 Jackscrews and forked boardlocks

**B** = #4-40 Flush threaded inserts and forked boardlocks

**C** = #4-40 Flush threaded inserts with removable jackscrews and forked boardlocks

**D** = Topside ground straps with screw holes

**POSITIONS**  
15, 26, 44, 62, 78

**HI-TEMP INSULATOR AVAILABLE**

##### CONTACT TYPE

**PL** = Plug, Right Angle Mount

**SL** = Socket, Right Angle Mount

##### OPTIONS:

Add designator(s) to end of part number

**30** = 30  $\mu$ in gold plating in contact area

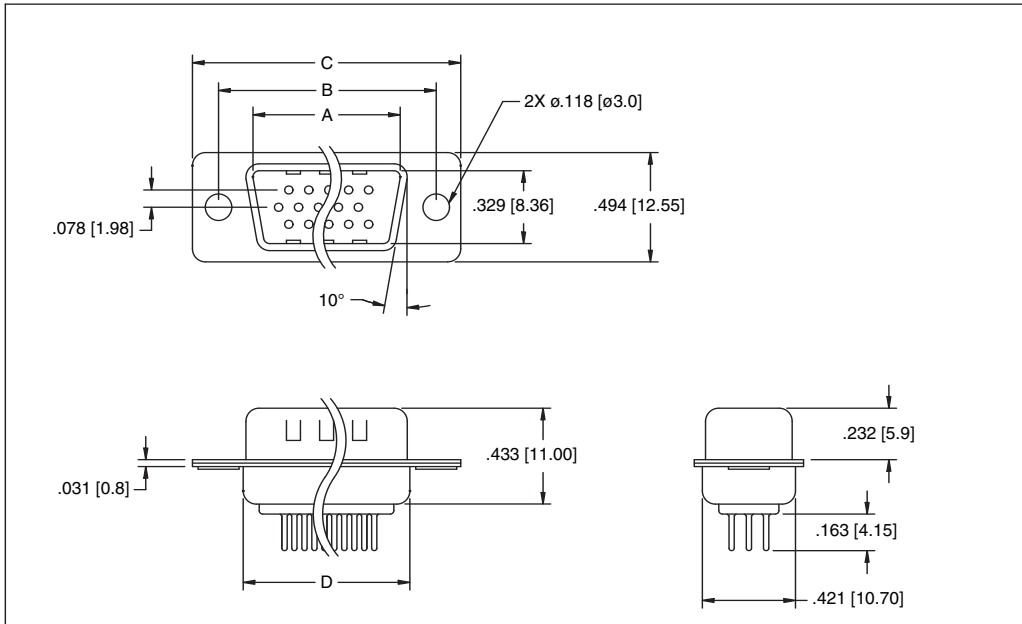
**EMI** = Ferrite filtered version for EMI / RFI suppression (Page 67)

**F** = Retention 4 prong boardlocks

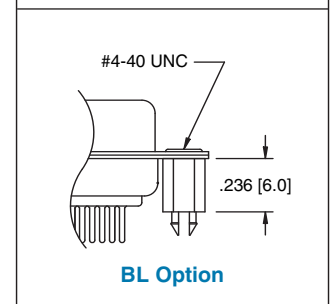
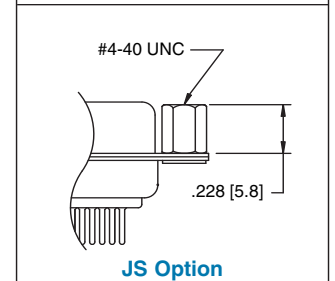
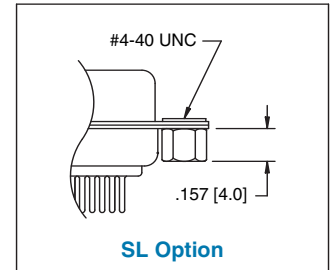
**HT** = Hi-Temp insulator for Hi-Temp soldering processes

**RC** = RoHS compliant lead-free product with Hi-Temp insulator

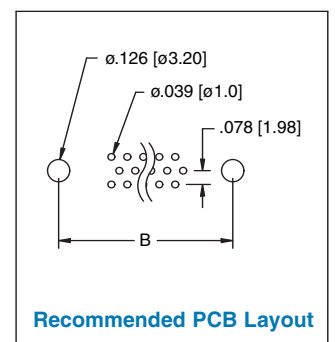
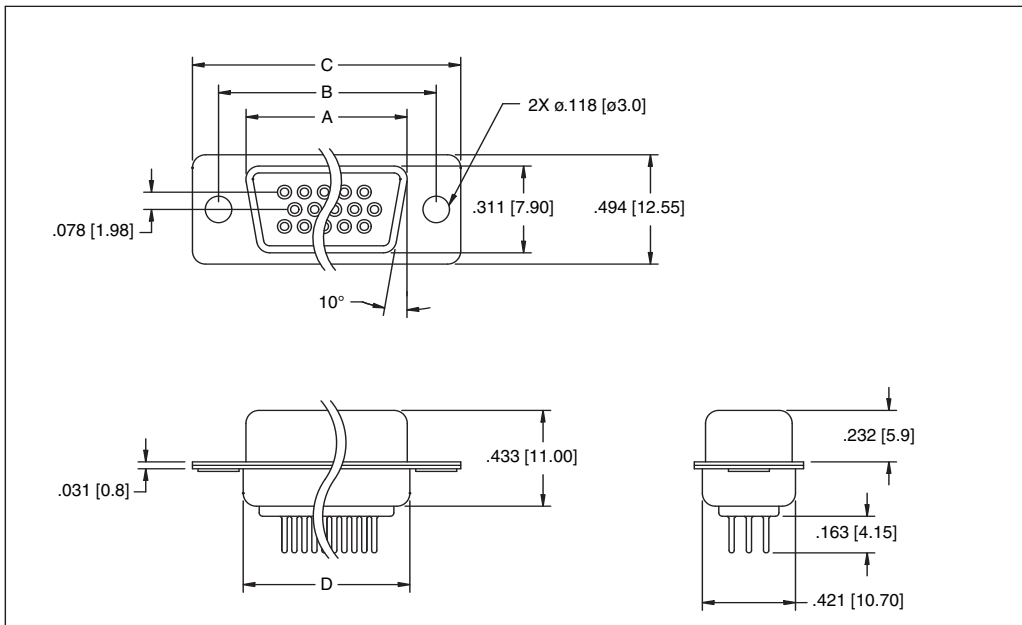
### PLUG



### MOUNTING OPTIONS



### SOCKET



Unit: Inch / mm

POSITIONS	Socket Dimensions			POSITIONS	Plug Dimensions		
	A	B	C		A	B	C
15	.643 (16.33)	.984 (24.99)	1.213 (30.81)	15	.666 (16.92)	.984 (24.99)	1.213 (30.81)
26	.971 (24.66)	1.312 (33.32)	1.541 (39.14)	26	.994 (25.25)	1.312 (33.32)	1.541 (39.14)
44	1.511 (38.38)	1.852 (47.04)	2.088 (53.04)	44	1.534 (38.96)	1.852 (47.04)	2.008 (53.04)
62	2.159 (54.84)	2.500 (63.50)	2.729 (69.32)	62	2.182 (55.42)	2.500 (63.50)	2.729 (69.32)
78	2.064 (52.43)	2.406 (61.11)	2.635 (66.93)	78	2.079 (52.81)	2.406 (61.11)	2.635 (66.93)

### INTRODUCTION:

Adam Tech Straight PCB tail High Density D-Sub connectors are a popular interface for many I/O applications. Offered in 15, 26, 44, 62 and 78 positions they are a good choice for a low cost industry standard high density connection. Adam Tech connectors are manufactured with precision stamped contacts offering a choice of contact plating and a wide selection of mating and mounting options.

### FEATURES:

- High Density pin count in standard size shell
- Industry standard compatibility
- Durable metal shell design
- Precision formed bifurcated contacts
- Variety of Mating and mounting options

### MATING CONNECTORS:

Adam Tech high density D-Subminiatures and all industry standard high density D-Subminiature connectors.

### SPECIFICATIONS:

#### Material:

Insulator: PBT, 30% glass reinforced, rated UL94V-0  
Insulator Colors: Black (White optional)  
Contacts: Phosphor Bronze  
Shell: Steel, Tin or Zinc plated  
Hardware: Brass, Nickel plated

#### Contact Plating:

Gold Flash (15 and 30  $\mu$ in Optional) over Nickel underplate.

#### Electrical:

Operating voltage: 250V AC / DC max.  
Current rating: 5 Amps max.  
Contact resistance: 20 m $\Omega$  max. initial  
Insulation resistance: 5000 M $\Omega$  min.  
Dielectric withstanding voltage: 1000V AC for 1 minute

#### Mechanical:

Insertion force: 0.75 lbs max  
Extraction force: 0.44 lbs min

#### Temperature Rating:

Operating temperature: -65°C to +125°C

### PACKAGING:

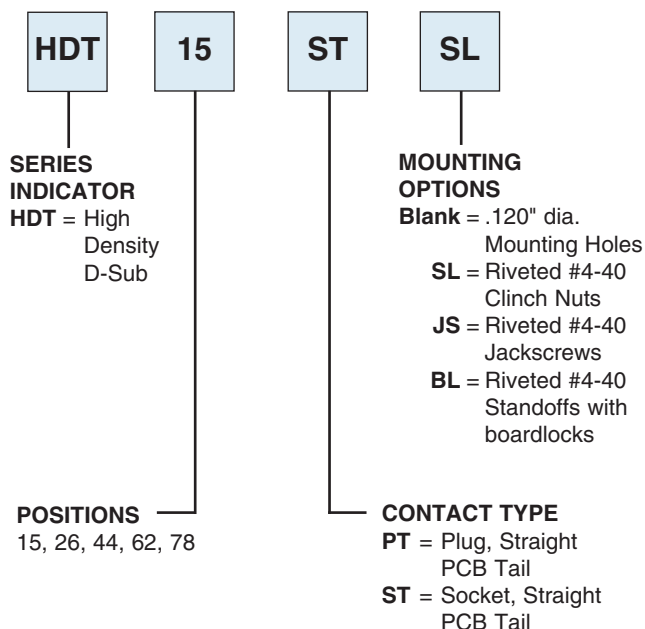
Anti-ESD plastic trays

### APPROVALS AND CERTIFICATIONS:

UL Recognized File No. E224053  
CSA Certified File No. LR1578596



### ORDERING INFORMATION

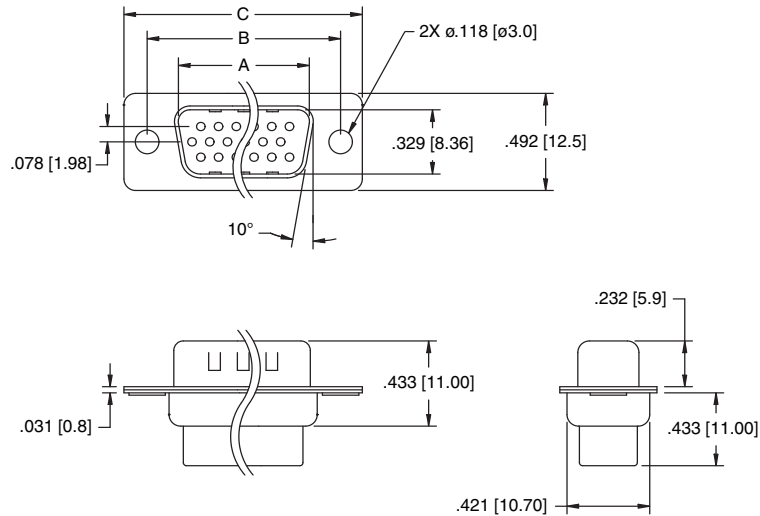


### OPTIONS:

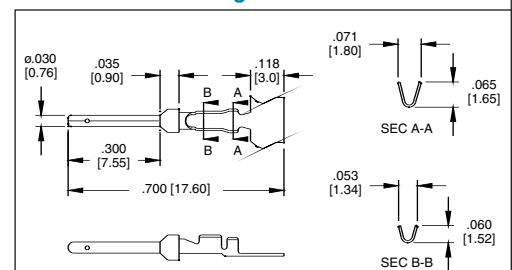
Add designator(s) to end of part number  
30 = 30  $\mu$ in gold plating in contact area  
RC = RoHS compliant lead-free product with Hi-Temp insulator



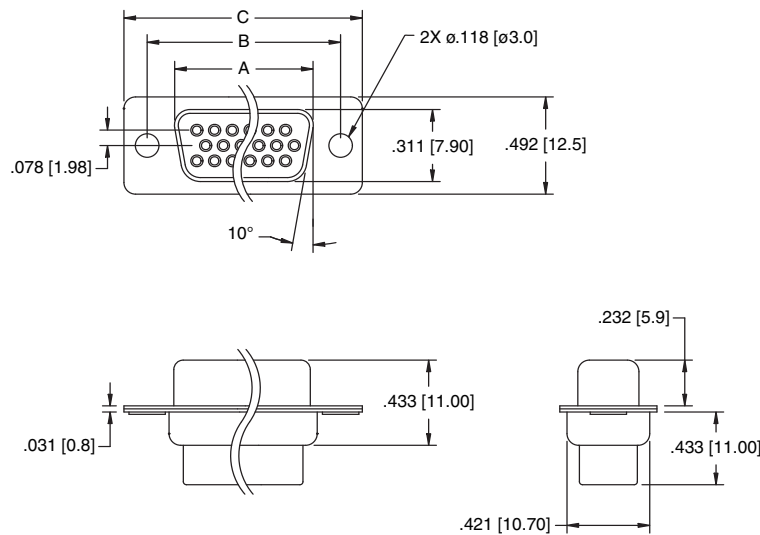
### PLUG



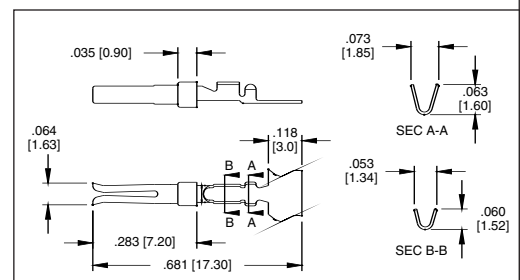
### Plug Contact



### SOCKET



### Socket Contact



Unit: Inch / mm

POSITIONS	Socket Dimensions			POSITIONS	Plug Dimensions		
	A	B	C		A	B	C
15	.643 (16.33)	.984 (24.99)	1.213 (30.81)	15	.666 (16.92)	.984 (24.99)	1.213 (30.81)
26	.971 (24.66)	1.312 (33.32)	1.541 (39.14)	26	.994 (25.25)	1.312 (33.32)	1.541 (39.14)
44	1.511 (38.38)	1.852 (47.04)	2.088 (53.04)	44	1.534 (38.96)	1.852 (47.04)	2.008 (53.04)
62	2.159 (54.84)	2.500 (63.50)	2.729 (69.32)	62	2.182 (55.42)	2.500 (63.50)	2.729 (69.32)
78	2.064 (52.43)	2.406 (61.11)	2.635 (66.93)	78	2.079 (52.81)	2.406 (61.11)	2.635 (66.93)