

4

3

2

1

THIS DRAWING IS UNPUBLISHED.

RELEASED FOR PUBLICATION

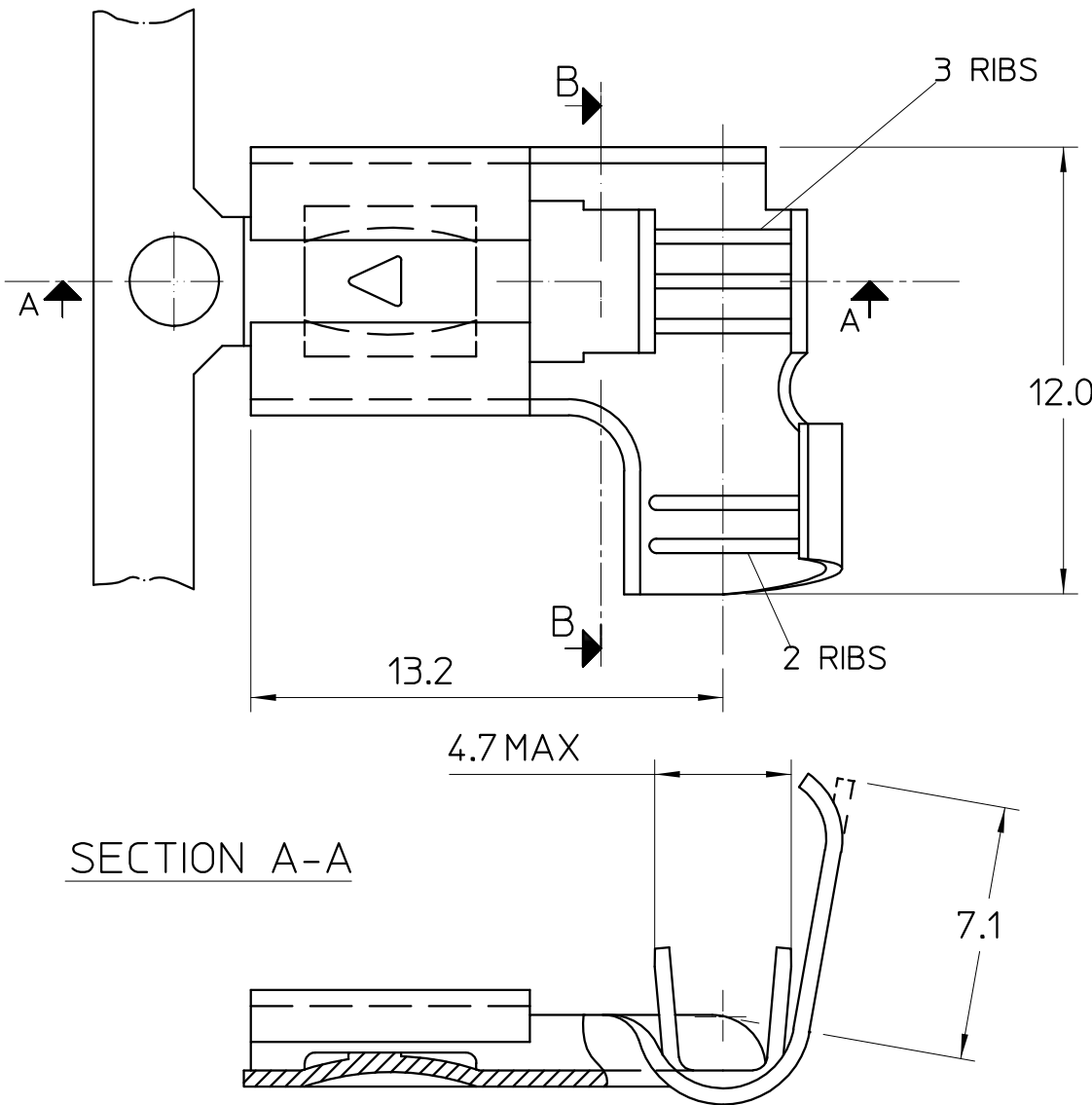
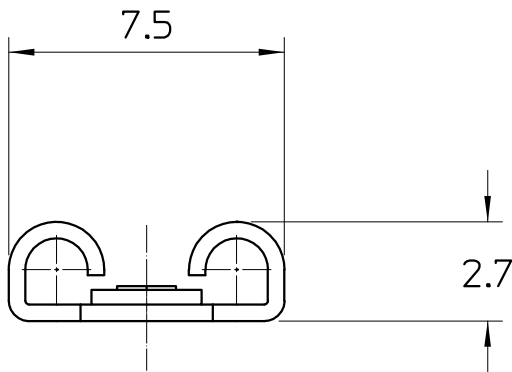
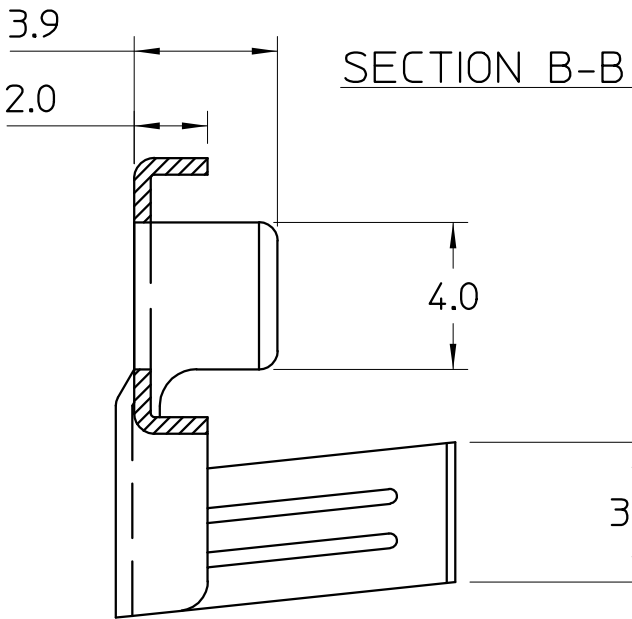
© COPYRIGHT - BY TYCO ELECTRONICS CORPORATION.

ALL RIGHTS RESERVED.

LOC U	DIST —	REVISIONS					
		P	LTR	DESCRIPTION	DATE	DWN	APVD
			0	RE-DRAWN - WAS UTX DRG 01.02592B.01	11.11.03	WR	HT

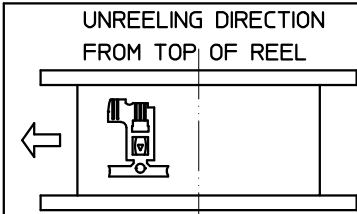
NOTES:

1. WIRE SIZE RANGE:
CONDUCTOR: 1.0mm² MIN
2.5mm² MAX.
INSULATION DIA: 2.8mm MIN.
3.9mm MAX.



THIS INFORMATION IS CONFIDENTIAL AND PROPRIETARY TO TYCO ELECTRONICS CORPORATION AND ITS WORLDWIDE SUBSIDIARIES AND AFFILIATES. IT MAY NOT BE DISCLOSED TO ANYONE OTHER THAN TYCO ELECTRONICS PERSONNEL WITHOUT WRITTEN AUTHORIZATION FROM TYCO ELECTRONICS CORPORATION, HARRISBURG, PENNSYLVANIA, USA.

THIS DRAWING IS A CONTROLLED DOCUMENT.		DWN: W.Riede 20.10.04	tyco Tyco Electronics Corporation Electronics AUSTRALIA			
		CHK: H. Thai 20.10.04				
ALL DIMENSIONS IN mm:		APVD: W. Riede 20.10.04	NAME: RECEPTACLE, FLAG QC 6.3			
		PRODUCT SPEC: -				
		APPLICATION SPEC: -				
MATERIAL: -		WEIGHT: -	SIZE: A3	CAGE CODE: -	DRAWING NO: C= 1627101	RESTRICTED TO: -
FINISH: -		CUSTOMER DRAWING		SCALE: 5:1	SHEET: 1 OF 1	REV: 0



ALL DIMENSIONS IN mm:	TOLERANCES UNLESS OTHERWISE SPECIFIED:
	DIMENSION (mm) TOLERANCE(+/-mm)
	LESS THAN 10 0.4
	OVER 10 TO 30 0.5
	OVER 30 TO 80 0.7
	OVER 80 TO 250 1.0
	ANGLES ±2°