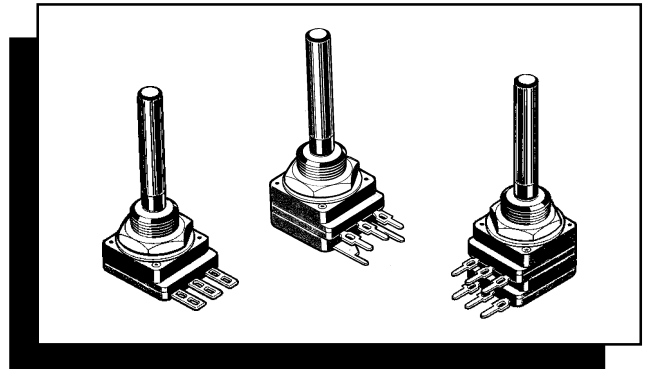


MEGGITT PIHER

POTENTIOMETERS
INDUCTORS, SMDS
SWITCHES, NETWORKS
ENCODERS
POWER COMPONENTS

Spindle Operated Potentiometers

TYPE PC16 SERIES



Specify the type PC16 for applications where high insulation resistance and voltage proof are key requirements. The materials used in the all plastic body and spindle construction are UL approved making it an ideal component for domestic appliances and control systems where safety is of prime importance. This popular low cost potentiometer is suitable for industrial and professional applications.

MEGGITT PIHER KEY FEATURES

- POLYMER THICK FILM ELEMENT
- HIGH RELIABILITY
- SMALL, VERSATILE SIZE
- ALL PLASTIC BODY
- PLASTIC OR METAL SPINDLES
- SWITCH TYPES AVAILABLE
- ATTRACTIVELY PRICED
- DUAL, TRIPLE AND QUAD SECTIONS

SPECIFICATION

TYPE PC16 SERIES

ELECTRICAL

Resistance Range:	100R to 5 Meg (Linear) 1K - 1Meg (Non Linear)
Resistance Value:	1, 2, 2.2, 2.5, 4.7, 5.0 in each decade
Resistance Tolerance:	$\pm 20\%$ (10% by selection) 1Meg - 5Meg $\pm 30\%$
Rated Dissipation at 40°C:	0.2 Watts (Linear), 0.1 Watts (Non Linear)
Limiting Element Voltage:	250 Volts dc (Linear), 125 Volts dc (Non Linear)
Electrical Rotation:	$280^\circ \pm 20^\circ$
Terminal Resistance:	5 ohms, maximum $\leq 0.1\%$ (2 ohms, minimum)
Noise (ENR):	$\leq 3\%$ (3 ohms minimum)
Insulation Resistance:	4G ohms, minimum
Voltage Proof:	1KV ac peak

MECHANICAL

Operating Torque, Maximum:	5 to 15 mNm
Mechanical Rotation:	$300^\circ \pm 5^\circ$
End Stop Torque:	400 mNm
Max. Torque to Nut:	800 mNm

ENVIRONMENTAL

Electrical Life:	$\Delta R \pm 5\%$ (1000 hours 0.2 Watts @ 40°C)
Mechanical Life:	25,000 operations
Operating Temperature:	-25°C to $+70^\circ\text{C}$
Temperature Coefficient:	$\pm 300\text{ppm}/^\circ\text{C}$ ($R_n < 100\text{K ohms}$)
Thermal Cycling:	$\Delta R \pm 2.5\%$ (16 hours 85°C , 2 hours @ -25°C)
Damp Heat:	$\Delta R \pm 5\%$ (500 hours @ 40°C +95% RH)
Vibration:	$\Delta R \pm 2\%$ (2 hours @ 20g - 10Hz ~50 Hz)

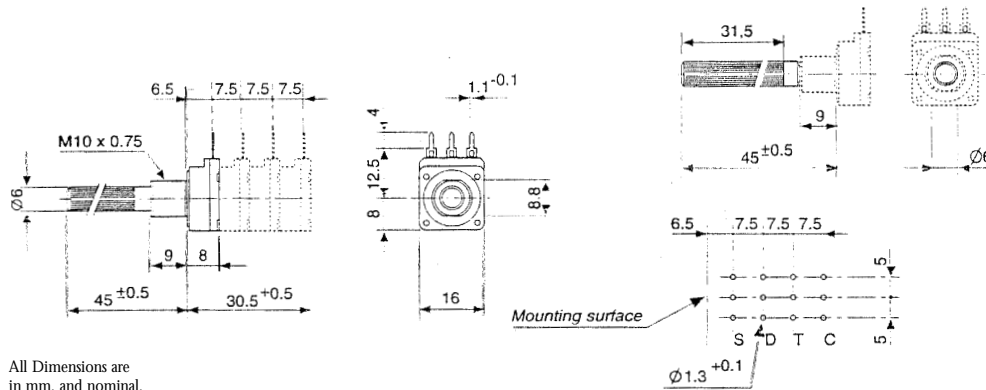
SWITCH SPECIFICATIONS

Nominal Current:	1A, 50 VAC
Contact Resistance:	10 milli ohms
Operating Torque:	10 to 30mNm
Operating Angle:	$30^\circ \pm 5^\circ$
Test Voltage:	500 V

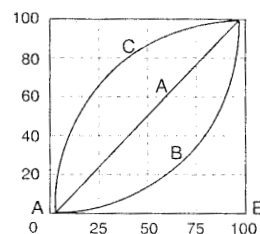
PACKAGING

Boxes of 50 pieces (160 x 110 x 85 mm.)

DIMENSIONS



OUTPUT LAWS



A = Linear
B = Log
C = Inverse Log

HOW TO ORDER

PC16S	H10	C	PO6	102	A	M	N
POTENTIOMETER TYPE	STYLE/BUSH	TERMINALS	SHAFT TYPE	RESISTANCE VALUE	LAW	RESISTANCE TOLERANCE	SWITCH
PC16 S - Single PC16 D - Dual PC16 T - Triple PC16 C - Quad	H07 - Horz. M7 Bush V07 - Vert. M7 Bush H10 - Horz. M10 Bush V10 - Vert. M10 Bush	I - PC C - Eyelet	PO6 - Standard Please request list for variants	The first two digits are significant figures of resistance value and the third one donates the number of zeroes following Example: 1K : 102 10K : 103 100K : 104	A - Law B - Log C - Inverse Log	M - $\pm 20\%$ N - $\pm 30\%$	N - No Switch S - Switched

M Meggitt Electronic Components Ltd. Ohmic House, Westmead Industrial Estate, Swindon, Wilts. SN5 7US
Telephone: (01793)487301 (Admin.) (01793) 611666 (Sales) Telex:449112 Citec G Fax:(01793) 610217 or 511513

This publication is issued to provide outline information only and (unless specifically agreed to the contrary by the Company in writing) is not to form part of any order or be regarded as a representation relating to the products or service concerned. We reserve the right to alter without notice the specification, design, price or conditions of supply of any product or service. Whilst Meggitt Electronic Components products are of the very highest quality and reliability, all electronic components can occasionally be subject to failure. Where failure of a Meggitt Electronic Components product could result in life threatening consequences, then the circuit and application must be discussed with the Company. Such areas might include ECG, respiratory, and other medical and nuclear applications and any non fail safe applications circuit.