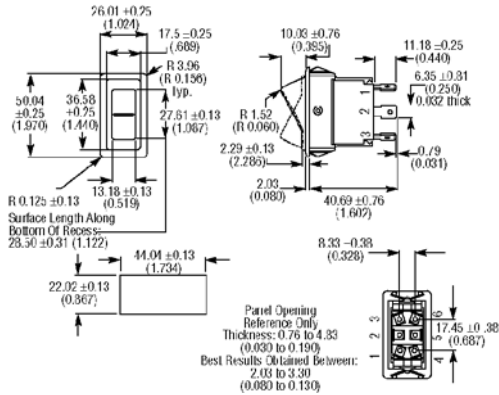


Full Size Euro-Look Rocker Switches



5



Recommended up to 15 A @ 28 VDC. Panel mount, cutout dimensions 0.867" × 1.734". Terminals: .250" spade.

Non-Illuminated Switches

Stock No.	Mfr.'s Type	Circuit	Switch Function*	Actuator Style	EACH		
					1-24	25-49	50-99
757-2401	8004K23N1V1	SPST	On-None-Off	Two face black rocker	6.01	5.27	4.90
757-2402	8004K23N6V1	SPST	On-None-Off	Two face black paddle	6.21	5.45	5.06
757-2403	8004K35N1V1	SPST	(On)-None-Off	Two face black rocker	8.48	7.44	6.91
757-2404	8004K35N6V1	SPST	(On)-None-Off	Two face black paddle	8.68	7.61	7.07
757-2405	8004K20N1V1	SPDT	On-Off-On	Two face black rocker	6.96	6.10	5.67
757-2406	8004K32N6V1	SPDT	(On)-Off-(On)	Two face black paddle	8.68	7.61	7.07
757-2407	8004K40N1V1	DPDT	On-Off-On	Two face black rocker	8.20	7.19	6.67
757-2408	8004K46N1V1	DPDT	On-None-On	Two face black rocker	8.20	7.19	6.67

Illuminated Switches

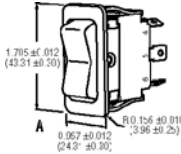
757-2409	8005K23N323V31	SPST	On-None-Off	Two face black rocker with one green lens	10.18	8.81	8.32
757-2410	8005K35N323V31	SPST	(On)-None-Off	Two face black rocker with one green lens	12.31	10.66	10.06
757-2411	8005K23N324V31	SPST	On-None-Off	Two face black rocker with two green lenses	12.10	10.66	10.06
757-2412	8005K35N324V31	SPST	(On)-None-Off	Two face black rocker with two green lenses	12.19	11.16	10.35

* () Momentary

Accessories

Stock No.	Mfr.'s Type	Description	EACH		
			1-24	25-49	50-99
757-2413	28-3426	Lock-on connector	.94	.77	.74
757-2414	17-19544-2	Euro-look panel plugs	3.35	2.89	2.69

Euro/SR Series Euro-Rocker Switches



This switch is designed for tough applications with snap-in mounting. All switches are molded in an aesthetically pleasing matte finish and operate with a crisp tactile feel.

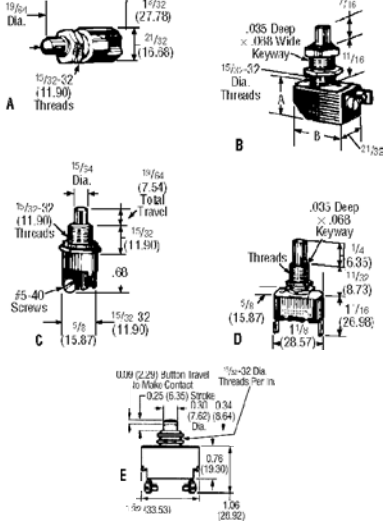
Non-Illuminated (Rated: 15 A, 125 VAC; 15 A, 28 VDC)

Black rocker and bezel. Sealed. 0.250" spade terminal.

Stock No.	Mfr.'s Type	Fig.	Circuit	Action (Momentary)	EACH		
					1-24	25-49	50-99
757-5524	8006K23N1V2	A	SPST	On-None-Off	5.66	4.47	4.31
757-5526	8006K20N1V2	A	SPDT	On-Off-On	6.35	5.03	4.85
757-5527	8006K26N1V2	A	SPDT	On-None-On	6.35	5.03	4.85
757-5528	8006K32N1V2	A	SPDT	(On)-Off-(On)	7.04	5.58	5.37
757-5529	8006K43N1V2	A	DPST	On-None-Off	7.47	5.91	5.69
757-5530	8006K40N1V2	A	DPDT	On-Off-On	8.69	6.89	6.64
757-5531	8006K52N1V2	A	DPDT	(On)-Off-(On)	9.95	7.88	7.59

Pushbutton and Rocker Switches

AC and AC/DC Rated Pushbutton Switches



Multi-Purpose AC/DC Pushbutton Switches

These have slow-make, slow-break contacts. Hardware unassembled.

Single Pole — Momentary — Normally Open

Stock No.	Mfr.'s Type	Fig.	Dim. (In.)		Rating @		Button Color	Terminals	EACH		
			A	B	125 V	250 V			1-24	25-49	50-99
757-2305	8411K11	A	15/32	3/8	3/4 A	1/4 A	Black	Spade	2.55	2.41	2.36
757-2309	8411K12	A	15/32	3/8	3/4 A	1/4 A	Black	Screw	3.42	2.83	2.55
757-2311	8411K13	A	1/4	1/4	3/4 A	1/4 A	Red	Screw *	2.67	2.31	2.00

*Spade and solder lugs.

Single Pole — Momentary — Normally Closed

757-2337	8411K7	A	15/32	13/32	3/4 A	1/4 A	Black	Screw	3.33	2.84	2.49
757-2340	8411K8	A	15/32	13/32	3/4 A	1/4 A	Black	S. Lug	2.78	2.39	2.08

AC/DC Pushbutton Switches

AC-DC switches are quick-make, quick-break. Mounting hardware supplied unassembled.

Push-On/Push-Off Switches (SPST)

757-2908	7208K104	B	.69	1.09	6 A	3 A DC	Nickel	Screw	9.74	8.45	7.43
----------	----------	---	-----	------	-----	--------	--------	-------	------	------	------

AC Pushbutton Switches

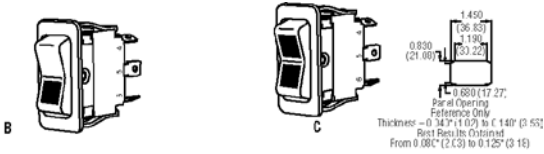
AC rated pushbutton switches feature slow-make, slow-break momentary contact mechanism. Bright nickel plated button. 15/32" (11.9 mm) dia. bushing. Mounting hardware supplied unassembled.

Single Pole — Normally Open

Stock No.	Mfr.'s Type	Fig.	Rating @			Terminals	EACH		
			125 V	250 V	125/250 V		1-24	25-49	50-99
757-2364	8440K2	C	3 A	—	—	S. Lug	7.73	6.27	5.78
757-2363	8440K3	C	3 A	—	—	Screw	8.31	7.26	6.34
757-2369	8442K4	D	6 A	3 A	—	Screw	5.10	4.35	3.81
757-2373	8444K4	D	15 A	10 A	1/3 Hp	Screw	5.56	4.72	4.16

Double Pole — Normally Open

757-2383	8448K2	E	15 A	10 A	—	Screw	10.98	9.63	8.37
----------	--------	---	------	------	---	-------	-------	------	------



Illuminated (Rated: 15 A, 125 VAC; 15 A, 28 VDC)

14 VDC bulb. Black rocker and bezel, no lens. Sealed. 0.250" spade terminal.

Stock No.	Mfr.'s Type	Fig.	Current	Action (Momentary)	Lamp Wiring	EACH		
						1-24	25-49	50-99
757-5532	8007K23N313V52	B	SPST	On-None-Off	Dep.	8.06	6.38	6.15
757-5533	8007K26N324V52	C	SPDT	On-None-On	Ind.	10.08	7.98	7.69
757-5534	8007K20N324V52	C	SPDT	On-Off-On	Ind.	10.08	7.98	7.69
757-5535	8007K32N324V52	C	SPDT	(On)-Off-(On)	Ind.	10.56	8.52	8.21

Euro-Style Lens (Ordered Separately)

757-5536.	28-5415. Green.	1-99	EACH	.35	100-499	EACH	.27
757-5537.	28-5415-2. Amber.	1-99	EACH	.30	100-499	EACH	.23
757-5538.	28-5415-3. Red.	1-99	EACH	.30	100-499	EACH	.23