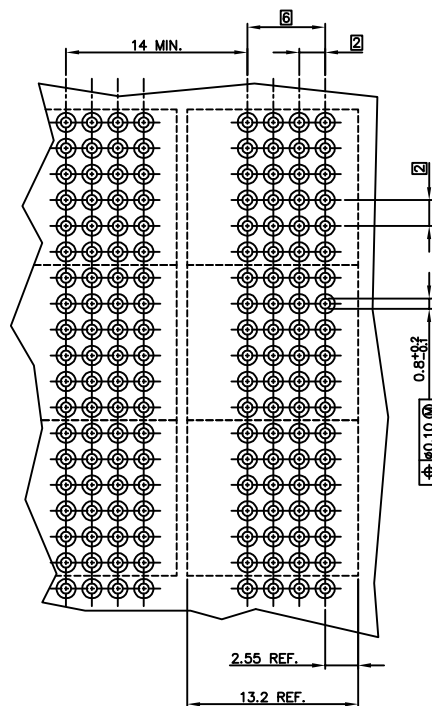
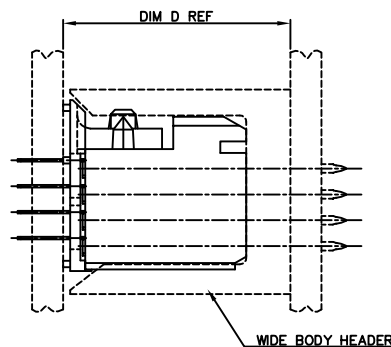
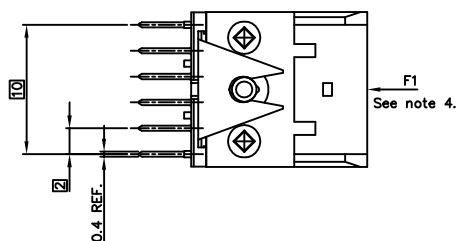
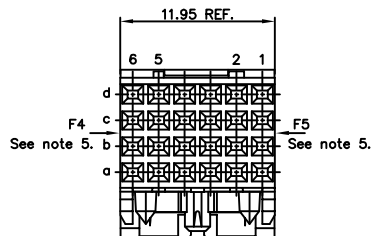
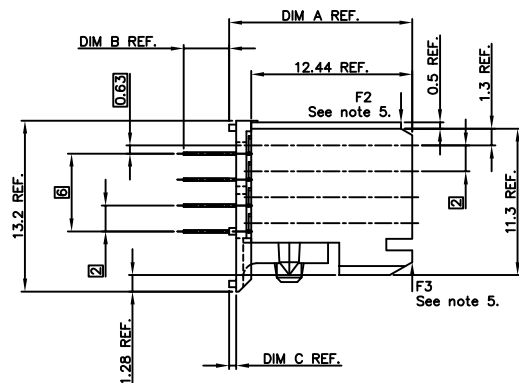


PRODUCT NR.
85922-XYZ
85922-XYZLF

PLATING CONTACT AREA:	
DASH NR:	PERFORMANCE LEVEL
-1YY/1YYLF	TELCORDIA CO
-2YY/2YYLF	CUSTOMER SPECIAL
-3YY/3YYLF	CUSTOMER SPECIAL



RECOMMENDED HOLE PATTERN,
COMPONENT SIDE.

DASH NR	CONFIGURATION						PCB THICKN.	DIM A	DIM B	DIM C	DIM D
	ROW #	6	5	4	3	2					
-X01	D	+	+	+	+	+	2.4	14.14	3.50	0.54	17.64
	C	+	+	+	+	+					
	B	+	+	+	+	+					
-X01LF	A	+	+	+	+	+	3.2	13.60	4.04	0.00	17.10
	D	+	+	+	+	+					
	C	+	+	+	+	+					
-X02	B	+	+	+	+	+	2.4	13.60	3.24	0.00	17.10
	A	+	+	+	+	+					
	D	+	+	+	+	+	1.6	13.60	2.39	0.00	17.10
-X03	C	+	+	+	+	+					
	B	+	+	+	+	+					
-X03LF	A	+	+	+	+	+	1.6	14.14	2.70	0.54	17.64
	D	+	+	+	+	+					
	C	+	+	+	+	+	1.6	14.64	3.00	0.54	18.14
-X04	B	+	+	+	+	+					
	A	+	+	+	+	+	1.6	15.14	2.50	0.54	18.64
-X05	D	+	+	+	+	+					
	C	+	+	+	+	+	2.4	14.14	3.50	0.54	17.64
	B	+	+	+	+	+					
-X06	A	+	+	+	+	+					
-X07	D	+	+	+	+	+	2.4	14.14	3.50	0.54	17.64
	C	+	+	+	+	+					
	B	+	+	+	+	+					
-X07LF	A	+	+	+	+	+					
-X20	D	+	+	+	+	+	2.4	14.14	3.50	0.54	17.64
	C	+	+	+	+	+					
	B	+	+	+	+	+					
-X20LF	A	+	+	+	+	+					

"-" POSITION NOT LOADED
"+" POSITION LOADED

NOTES:

1. BODY MAT'L: LIQUID CRYSTAL POLYMER 30% GLASS
FLAME RETARDANT ACC. UL 94-V0
2. TERMINAL MATERIAL: PHOSPHOR BRONZE.
3. PLATING SOLDER TAILS 2-8 μ m SnPb 90-97 OR 2-8 μ m PURE FOR LF.
4. LOAD IN THIS DIRECTION (E.G. THROUGH CODING) 30 NEWTON MAXIMUM PER CONNECTOR.
5. LOAD IN THIS DIRECTION 15 NEWTON MAXIMUM PER CONNECTOR.
6. TO ENSURE PROPER ALIGNMENT OF MULTIPLE MODULES ON A BOARD THE USE OF A FIXTURE IS RECOMMENDED.
7. PRODUCT MARKING: PARTNUMBER & BATCH I.D.
8. THIS PRODUCT MEETS EUROPEAN UNION DIRECTIVES AND OTHER COUNTRY REGULATIONS AS DESCRIBED IN GS-22-008.
9. THE HOUSING WILL WITHSTAND EXPOSURE TO 260 DEGREE PEAK TEMPERATURE FOR 10 SECONDS IN A WAVE SOLDER APPLICATION.

mat'l. code	tolerances unless otherwise specified	CUSTOMER COPY	projection	title
lit/ecn no dr date				
H 0007-0720/0005/22/07 linear				STR SIGN RCP
J 0008-0711 TER 9/10/08				STB + WAFER 12mm
K 0009-0008/0005/20/08/08				product family METRAL (cm) code
E 1170302 JDC 070604 0001 M. MEIER 080313			mm	size dvg no
F 1180380 PHE 080810 0001 P. SCHALK 080313			scale	213
G 1180380 GLE 080811 0001 P. SCHALK 080313			sheet	1 of 1
index sheet 1				