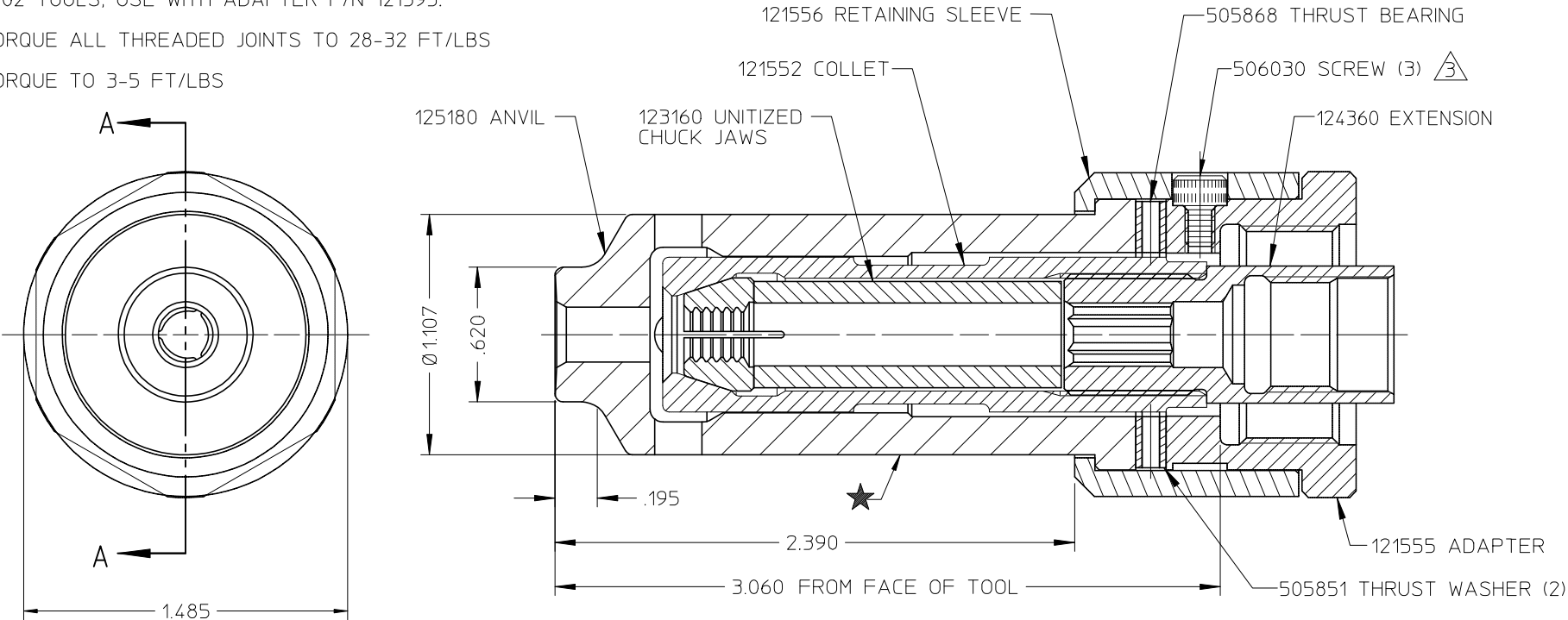


| REV | DESCRIPTION   | DATE     |
|-----|---------------|----------|
| A   | RELEASE       | 07-17-96 |
| B   | FILE OBSOLETE | 11-26-96 |

NOTES:

- DIRECT MOUNT TO 228, 229, & 230 TOOLS ONLY.  
FOR USE WITH 225, 245, 226, 246, 247, 2502 &  
4802 TOOLS, USE WITH ADAPTER P/N 121395.
  - TORQUE ALL THREADED JOINTS TO 28-32 FT/LBS
- ⚠ TORQUE TO 3-5 FT/LBS



SECTION A-A

FILE OBSOLETE

OBSOLESCE DATE: 11/26/96

OBSOLETE DATE: 11/26/96

SUPERSEDED BY: 99-3465-1

|   |   |   |  |  |  |                |            |
|---|---|---|--|--|--|----------------|------------|
| FORM: KE104 REV C                             |   | By accepting this proprietary Huck drawing, recipient agrees not to reproduce or disclose any part thereof to any others without the written permission of Huck International, Inc. |  |  |  |                |            |
| MATERIAL:                                     | - | SPEC:   | TOLERANCES UNLESS OTHERWISE SPECIFIED:<br>(ALL DIMENSIONS ARE IN INCHES) |  | HUCK INTERNATIONAL, INC., I.S.D.<br>85 GRAND STREET, P.O. BOX 2270<br>KINGSTON, NEW YORK 12401 |                |            |
| HARDNESS:                                     | - | (RAW OR STOCKED STATE)  |  |  |  |                |            |
| HEAT TREAT TO:                                | - | SPEC:   | .XX, .XXX ±  | NOSE ASSEMBLY<br>-12 LP CLEARANCE SLEEVE |  |                |            |
| SURFACE TREAT:                                | - | SPEC:   | INT. COR. RADII  |  |  |                |            |
| SURFACE FINISH NOT TO EXCEED: Ra              |   |   | BREAK EDGES  |  | DET: SMR CK:   | DATE: 07/17/96 | SCALE: 2/1 |
| IDENTIFICATION PER SPEC 42-311: ★ ETCH        |   |   | ANGLES ±   |  | FOC.   | B              | 99-3433-1  |
| SURFACES TO BE ☉, //, ⊕, ⊥, & ▽ WITHIN T.I.R. |   |   | FINAL ASSY:  |  | FAC.   |                |            |