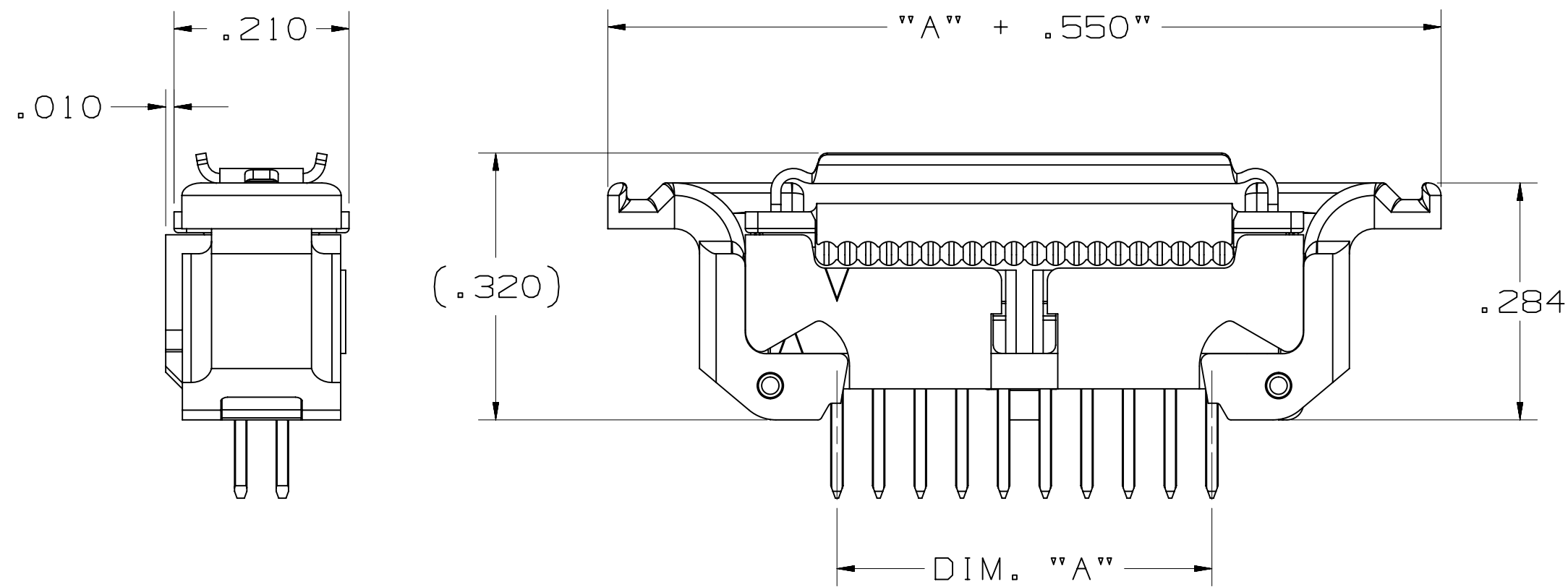
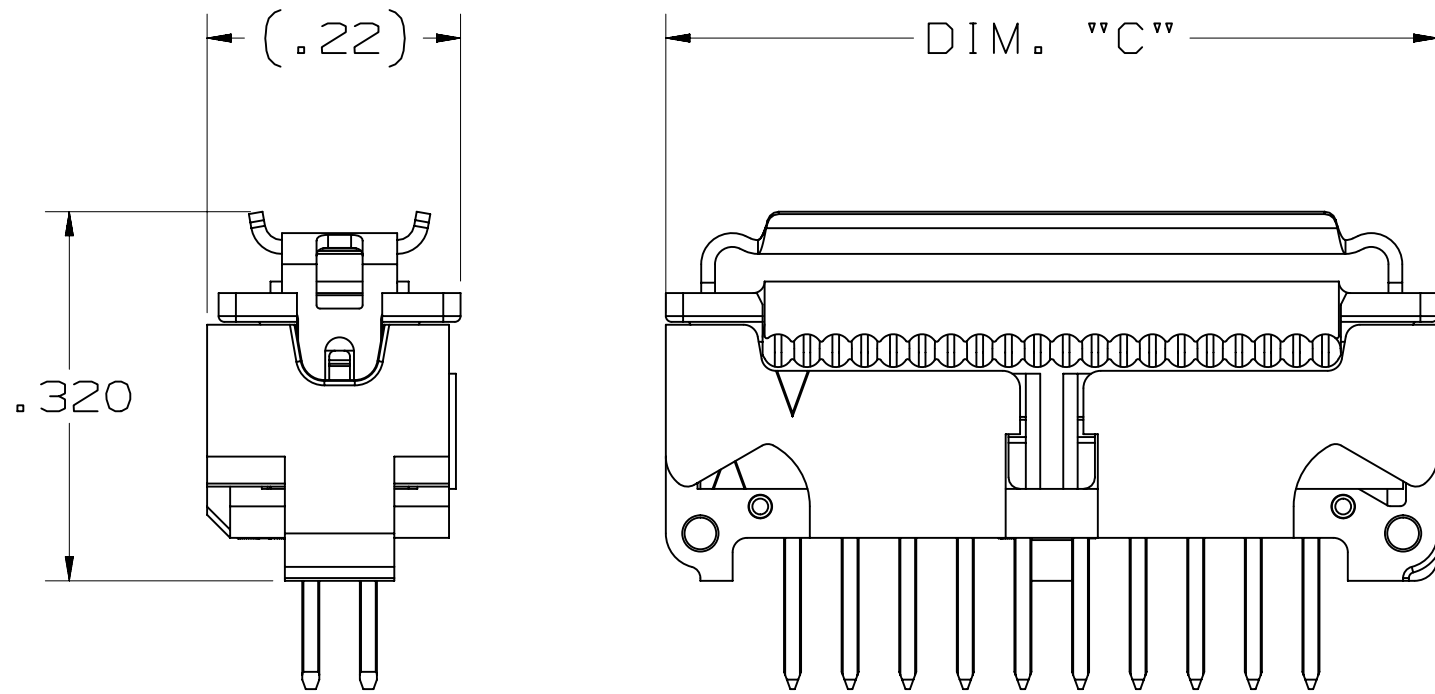


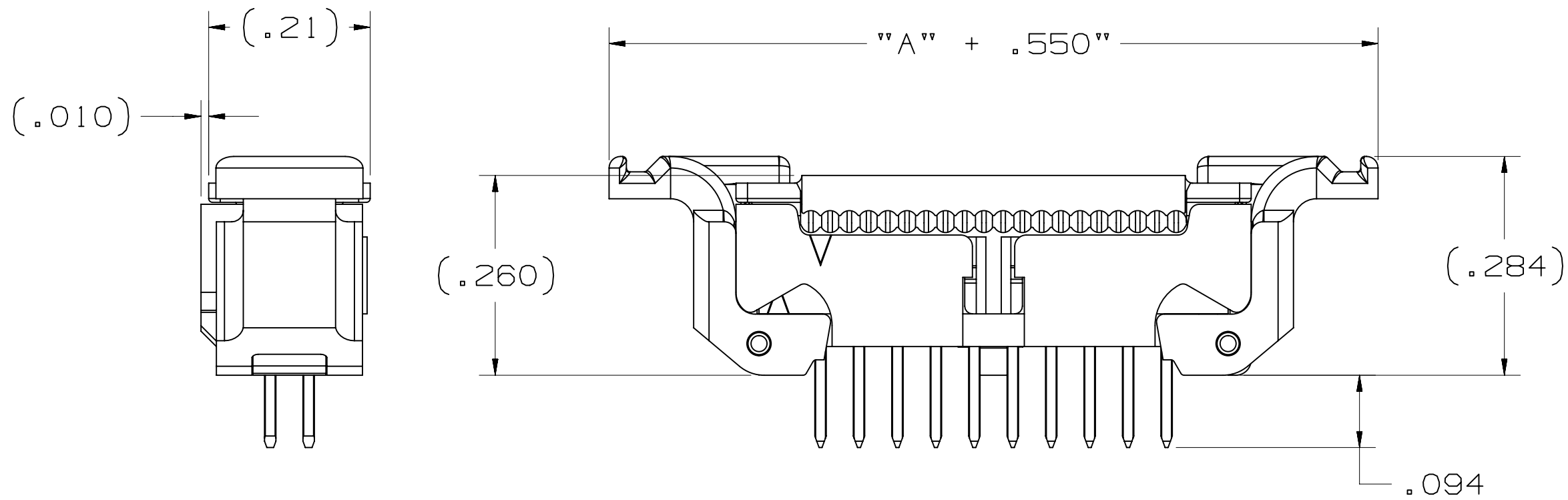
3M<sup>TH</sup> SHROUDED BOARDMOUNT HEADER, .05" X .05" PITCH,  
LATCH AND EJECT, 452 SERIES



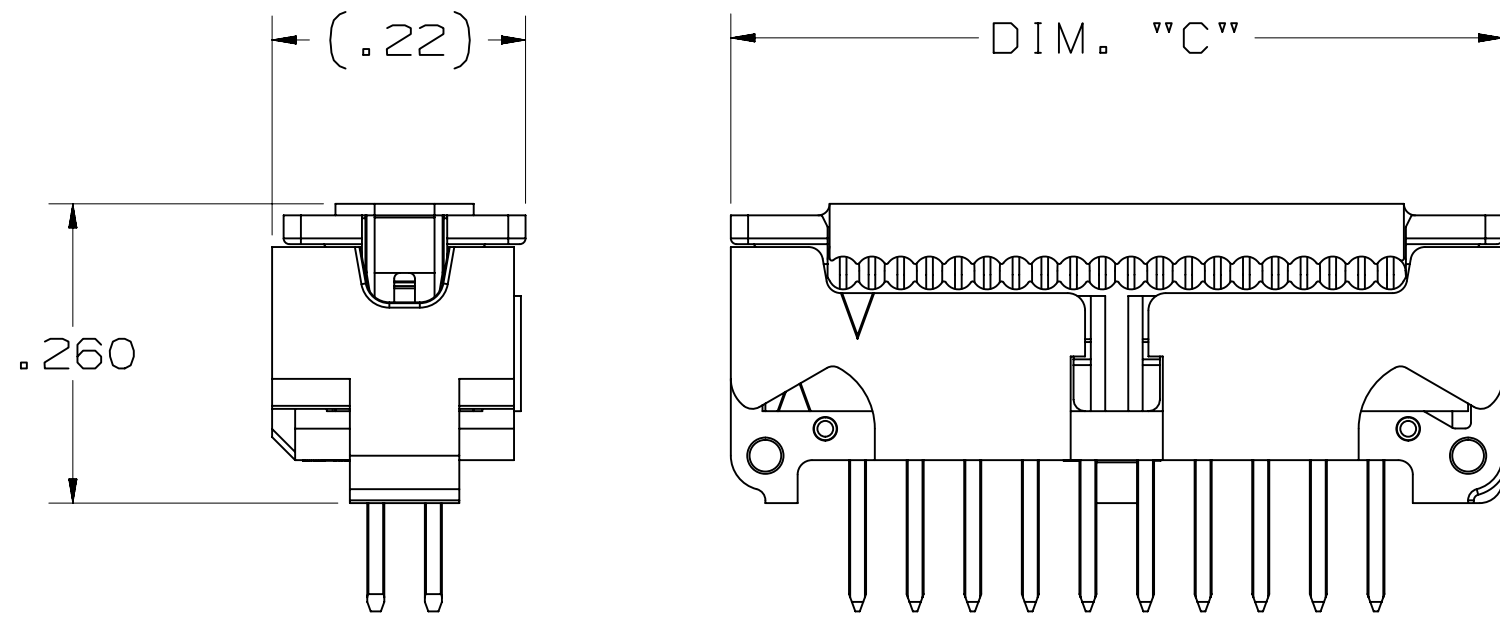
VERTICAL HEADER & SOCKET ASSEMBLY  
WITH LOW PROFILE LATCHES & STRAIN RELIEF



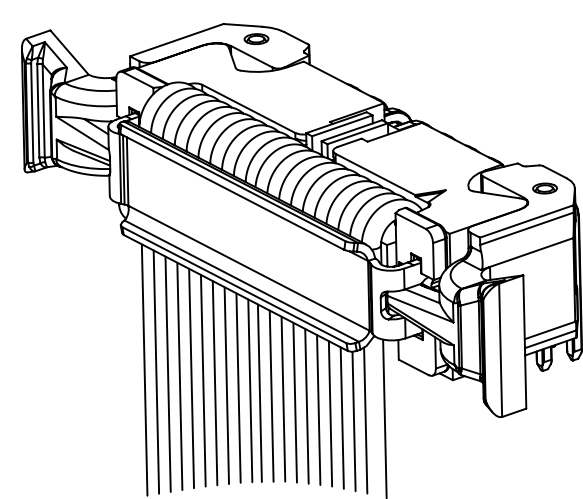
VERTICAL HEADER & SOCKET ASSEMBLY  
NO LATCHES WITH STRAIN RELIEF



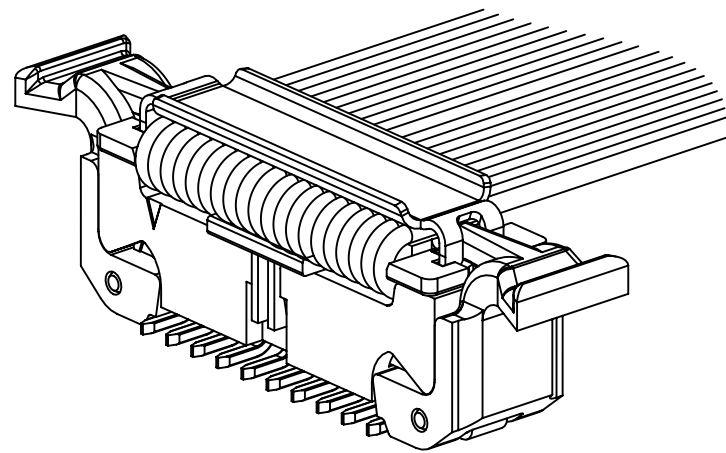
VERTICAL HEADER & SOCKET ASSEMBLY  
WITH LATCHES NO STRAIN RELIEF



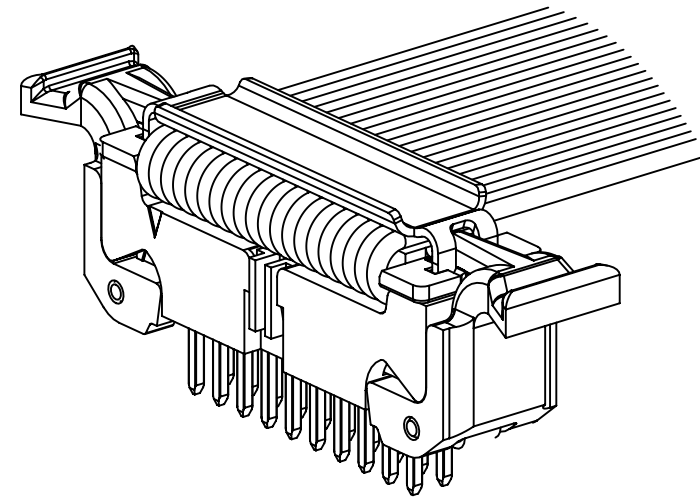
VERTICAL HEADER & SOCKET ASSEMBLY  
NO LATCHES NO STRAIN RELIEF



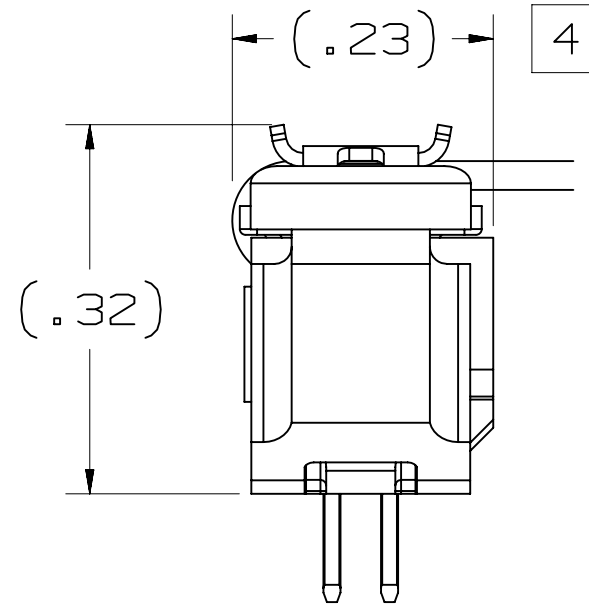
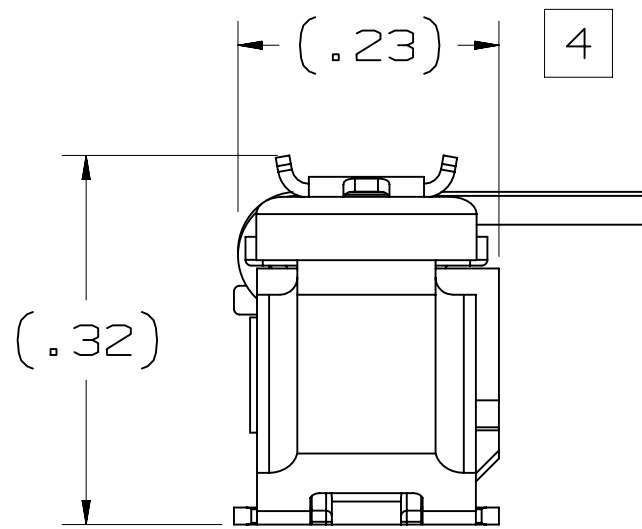
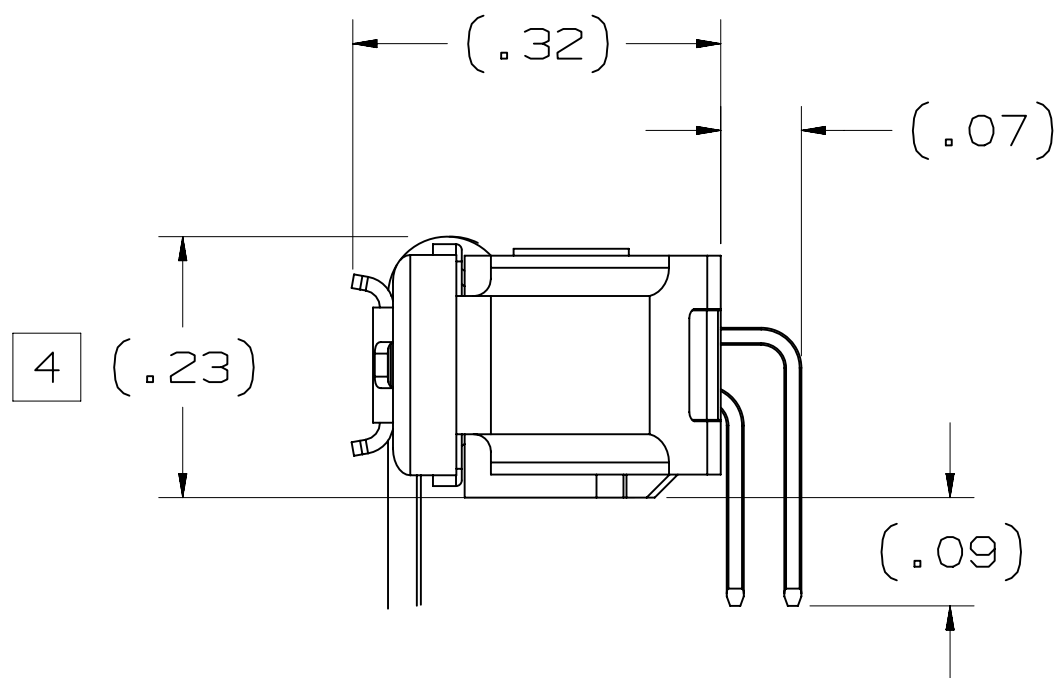
RA ASSEMBLY



SMT ASSEMBLY



VERTICAL ASSEMBLY



No. Positions	Dim "A"	Dim "C"
4	.050	.270
6	.100	.320
8	.150	.370
10	.200	.420
12	.250	.470
14	.300	.520
16	.350	.570
20	.450	.670
30	.700	.920

- NOTES
1. IN THE EVENT OF CONFLICT BETWEEN THIS DATA AND THAT CONTAINED IN THE PRODUCT SPECIFICATION, THE PRODUCT SPECIFICATION TAKES PRECEDENT.
  2. REGULATORY INFORMATION: ROHS COMPLIANT. SEE THE REGULATORY INFORMATION APPENDIX (RIA) IN THE "ROHS COMPLIANCE" SECTION OF WWW.3MCONNECTORS.COM FOR COMPLIANCE INFORMATION (RIA E1 & C1 APPLY)
  3. OTHER PIN COUNTS AVAILABLE UPON REQUEST. CONTACT 3M.
  4. DIMENSIONS IS TAKEN FROM EDGE OF CABLE TO SIDE OF CONNECTOR.

3M<sup>TM</sup> ELECTRONIC SOLUTIONS DIVISION  
INTERCONNECT SOLUTIONS  
<http://www.3mconnectors.com>

3M IS A TRADEMARK OF 3M COMPANY.  
FOR TECHNICAL, SALES OR ORDERING  
INFORMATION CALL 800-225-5373

DESIGN REFERENCE	NEXT ASSEMBLY	REV	ECO	ISSUE DATE AND DESCRIPTION	DRFT	CHKD
ARM	ARM	FEB 11, 2011	MFG	DATE	DATE	DATE
CHKD	DATE	APPRV	S. NEU	DATE	FEB 11, 2011	DATE
DIVISION	Interconnect Solutions	DIVISION CODE	ISD	© 3M COPYR[IGHT] 2013	3M Center	St. Paul, MN 55144
DO NOT SCALE DRAWING	SCALE 6-1	TOLERANCES EXCEPT AS NOTED	INCHES .00 ± .01 .000 ± .005 .0000 ± .005	MILLIMETERS 0 ± .00 ± .000 ± .000	MAX SURFACE ROUGHNESS	1.6
THIRD ANGLE PROJECTION	INTERPRET PER ASME Y14.5 - 1994	MARKED ONLY	YES	NO	SHT 1 OF 1	REV. B
CAGE NUMBER	78-5100-2396-9	SIZE	D	DRAWING NO.	78-5100-2396-9	REV. B
MODEL	452	LISTS	YES	NO	SHT 1 OF 1	REV. B