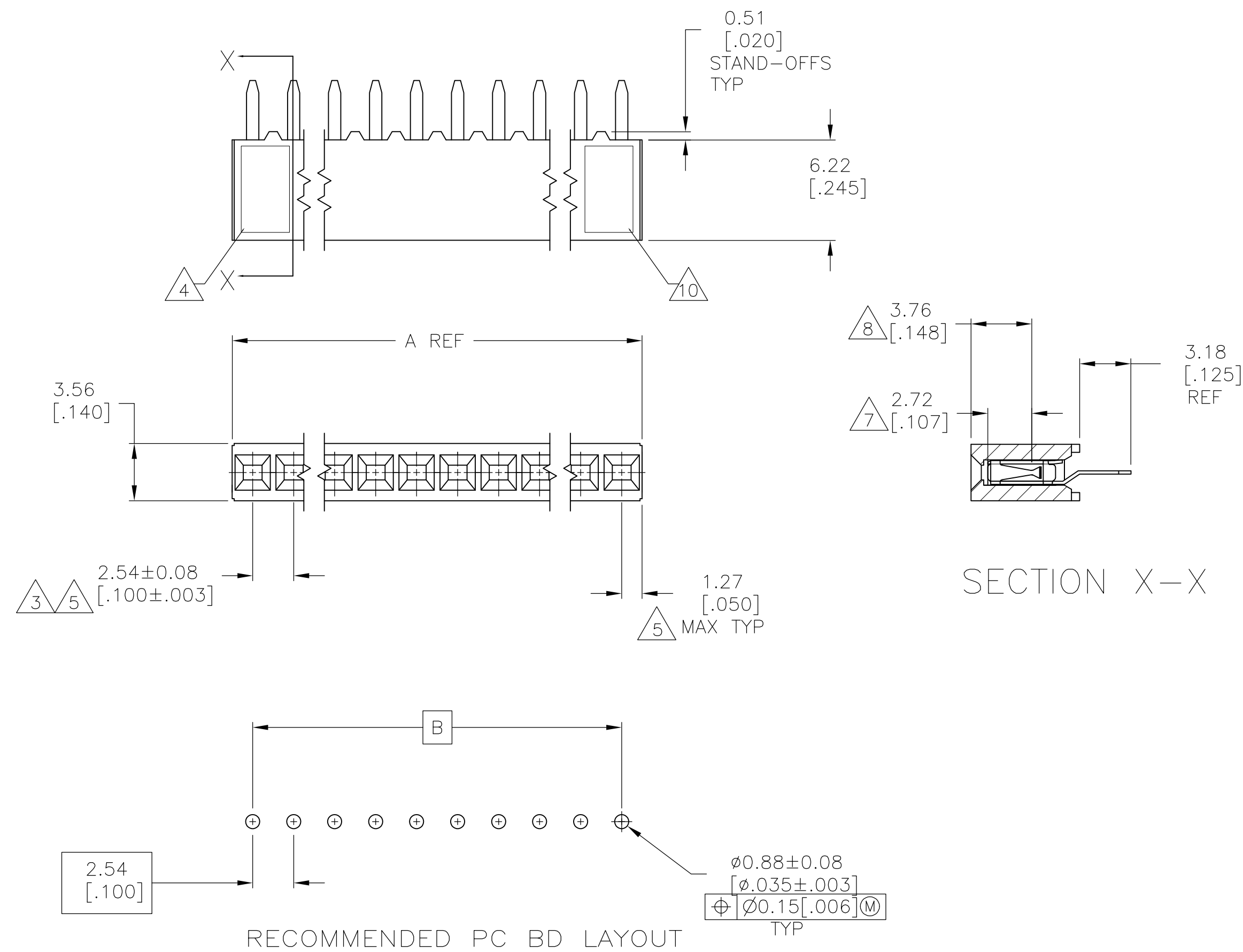
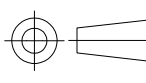


LOC	DIST	REVISIONS					
AD	00	P	LTR	DESCRIPTION	DATE	OWN	APVD
			N1	REVISED PER ECO-08-019092	05AUG08	HMR	JO



- 1 HOUSING: FLAME RETARDANT, GLASS FILLED, POLYESTER, COLOR: BLACK.
CONTACT: PHOSPHOR BRONZE
- 2 CONTACT: DUPLEX PLATED $0.76\mu\text{m}$ [.000030] MIN GOLD IN CONTACT
AREA, $3.81-7.62\mu\text{m}$ [.000150-.000300] BRIGHT TIN-LEAD ON LEADS
ALL OVER $1.27\mu\text{m}$ [.000050] MIN NICKEL
- 3 THESE DIMENSIONS PERTAIN TO CAVITY CENTERLINES ONLY – NOT TO
CONTACT LOCATIONS
- 4 PART NUMBER AND DATE CODE ARE MARKED IN APPROXIMATE LOCATION SHOWN.
- 5 TOLERANCE IS NON-CUMULATIVE.
- 6 2 POSITION DATE CODE IS MARKED OPPOSITE SIDE OF TE LOGO.
- 7 POINT-OF-MEASUREMENT DIMENSION FOR PLATING
THICKNESS (INSIDE CONTACT BEAM).
- 8 POINT-OF-CONTACT DIMENSION.
- 9 NO PART NUMBER MARKING REQUIRED FOR THIS PART.
- 10 TE LOGO AND CSA LOGO ARE MOLDED INTO HOUSING.
- 11 CONTACT: DUPLEX PLATED $0.76\mu\text{m}$ [.000030] MIN GOLD IN CONTACT
AREA, $3.81-7.62\mu\text{m}$ [.000150-.000300] MATTE TIN ON LEADS
ALL OVER $1.27\mu\text{m}$ [.000050] MIN NICKEL
- 12 ROHS 2002/95/EC COMPLIANT.

<div><div><div>6</div><div>9</div></div></div> <div><div>11</div></div> <div><div><div>9</div><div>9</div><div>9</div></div></div>		2.54 [1.00]	5.08 [2.00]	2	<div><div>12</div></div> 8-535541-9
		99.06 [3.900]	101.60 [4.000]	40	<div><div>12</div></div> 8-535541-8
		96.52 [3.800]	99.06 [3.900]	39	<div><div>12</div></div> 8-535541-7
		93.98 [3.700]	96.52 [3.800]	38	<div><div>12</div></div> 8-535541-6
		91.44 [3.600]	93.98 [3.700]	37	<div><div>12</div></div> 8-535541-5
		88.90 [3.500]	91.44 [3.600]	36	<div><div>12</div></div> 8-535541-4
		86.36 [3.400]	88.90 [3.500]	35	<div><div>12</div></div> 8-535541-3
		83.82 [3.300]	86.36 [3.400]	34	<div><div>12</div></div> 8-535541-2
		81.28 [3.200]	83.82 [3.300]	33	<div><div>12</div></div> 8-535541-1
		78.74 [3.100]	81.28 [3.200]	32	<div><div>12</div></div> 8-535541-0
		76.20 [3.000]	78.74 [3.100]	31	<div><div>12</div></div> 7-535541-9
		73.66 [2.900]	76.20 [3.000]	30	<div><div>12</div></div> 7-535541-8
		71.12 [2.800]	73.66 [2.900]	29	<div><div>12</div></div> 7-535541-7
		68.58 [2.700]	71.12 [2.800]	28	<div><div>12</div></div> 7-535541-6
		66.04 [2.600]	68.58 [2.700]	27	<div><div>12</div></div> 7-535541-5
		63.50 [2.500]	66.04 [2.600]	26	<div><div>12</div></div> 7-535541-4
		60.96 [2.400]	63.50 [2.500]	25	<div><div>12</div></div> 7-535541-3
		58.42 [2.300]	60.96 [2.400]	24	<div><div>12</div></div> 7-535541-2
		55.88 [2.200]	58.42 [2.300]	23	<div><div>12</div></div> 7-535541-1
		53.34 [2.100]	55.88 [2.200]	22	<div><div>12</div></div> 7-535541-0
		50.80 [2.000]	53.34 [2.100]	21	<div><div>12</div></div> 6-535541-9
		48.26 [1.900]	50.80 [2.000]	20	<div><div>12</div></div> 6-535541-8
		45.72 [1.800]	48.26 [1.900]	19	<div><div>12</div></div> 6-535541-7
		43.18 [1.700]	45.72 [1.800]	18	<div><div>12</div></div> 6-535541-6
		40.64 [1.600]	43.18 [1.700]	17	<div><div>12</div></div> 6-535541-5
		38.10 [1.500]	40.64 [1.600]	16	<div><div>12</div></div> 6-535541-4
		35.56 [1.400]	38.10 [1.500]	15	<div><div>12</div></div> 6-535541-3
		33.02 [1.300]	35.56 [1.400]	14	<div><div>12</div></div> 6-535541-2
		30.48 [1.200]	33.02 [1.300]	13	<div><div>12</div></div> 6-535541-1
		27.94 [1.100]	30.48 [1.200]	12	<div><div>12</div></div> 6-535541-0
		25.40 [1.000]	27.94 [1.100]	11	<div><div>12</div></div> 5-535541-9
		22.86 [900]	25.40 [1.000]	10	<div><div>12</div></div> 5-535541-8
	20.32 [800]	22.86 [900]	9	<div><div>12</div></div> 5-535541-7	
	17.78 [700]	20.32 [800]	8	<div><div>12</div></div> 5-535541-6	
	15.24 [600]	17.78 [700]	7	<div><div>12</div></div> 5-535541-5	
	12.70 [500]	15.24 [600]	6	<div><div>12</div></div> 5-535541-4	
	10.16 [400]	12.70 [500]	5	<div><div>12</div></div> 5-535541-3	
	7.62 [300]	10.16 [400]	4	<div><div>12</div></div> 5-535541-2	
	5.08 [200]	7.62 [300]	3	<div><div>12</div></div> 5-535541-1	
FINISH	B	A	NO OF POSN	PART NUMBER	

9	2	2.54	[.100]	5.08	[.200]	2	6	3-535541-9	
		99.06	[3.900]	101.60	[4.000]	40		3-535541-8	
		96.52	[3.800]	99.06	[3.900]	39		3-535541-7	
9	2	93.98	[3.700]	96.52	[3.800]	38	6	3-535541-6	
		91.44	[3.600]	93.98	[3.700]	37		3-535541-5	
		88.90	[3.500]	91.44	[3.600]	36		3-535541-4	
9	2	86.36	[3.400]	88.90	[3.500]	35	6	3-535541-3	
		83.82	[3.300]	86.36	[3.400]	34		3-535541-2	
		81.28	[3.200]	83.82	[3.300]	33		3-535541-1	
9	2	78.74	[3.100]	81.28	[3.200]	32	6	3-535541-0	
		76.20	[3.000]	78.74	[3.100]	31		2-535541-9	
		73.66	[2.900]	76.20	[3.000]	30		2-535541-8	
9	2	71.12	[2.800]	73.66	[2.900]	29	6	2-535541-7	
		68.58	[2.700]	71.12	[2.800]	28		2-535541-6	
		66.04	[2.600]	68.58	[2.700]	27		2-535541-5	
9	2	63.50	[2.500]	66.04	[2.600]	26	6	2-535541-4	
		60.96	[2.400]	63.50	[2.500]	25		2-535541-3	
		58.42	[2.300]	60.96	[2.400]	24		2-535541-2	
9	2	55.88	[2.200]	58.42	[2.300]	23	6	2-535541-1	
		53.34	[2.100]	55.88	[2.200]	22		2-535541-0	
		50.80	[2.000]	53.34	[2.100]	21		1-535541-9	
9	2	48.26	[1.900]	50.80	[2.000]	20	6	1-535541-8	
		45.72	[1.800]	48.26	[1.900]	19		1-535541-7	
		43.18	[1.700]	45.72	[1.800]	18		1-535541-6	
9	2	40.64	[1.600]	43.18	[1.700]	17	6	1-535541-5	
		38.10	[1.500]	40.64	[1.600]	16		1-535541-4	
		35.56	[1.400]	38.10	[1.500]	15		1-535541-3	
9	2	33.02	[1.300]	35.56	[1.400]	14	6	1-535541-2	
		30.48	[1.200]	33.02	[1.300]	13		1-535541-1	
		27.94	[1.100]	30.48	[1.200]	12		1-535541-0	
9	2	25.40	[1.000]	27.94	[1.100]	11	6	535541-9	
		22.86	[.900]	25.40	[1.000]	10		535541-8	
		20.32	[.800]	22.86	[.900]	9		535541-7	
9	2	17.78	[.700]	20.32	[.800]	8	6	535541-6	
		15.24	[.600]	17.78	[.700]	7		535541-5	
		12.70	[.500]	15.24	[.600]	6		535541-4	
9	2	10.16	[.400]	12.70	[.500]	5	6	535541-3	
		7.62	[.300]	10.16	[.400]	4		535541-2	
		5.08	[.200]	7.62	[.300]	3		535541-1	
FINISH		B		A		NO OF POSN		PART NUMBER	
THIS DRAWING IS A CONTROLLED DOCUMENT.				OWN M. BINNER CHK J. OLSON APD J. OLSON		05NOV02 05NOV02 05NOV02		Tyco Electronics Tyco Electronics Corporation Harrisburg, Pa 17105-3608	
DIMENSIONS: mm [INCHES]		TOLERANCES, UNLESS OTHERWISE SPECIFIED:		PRODUCT SPEC 108-25022 APPLICATION SPEC 114-25018		NAME		RECT. ASSY. MOD IV, SINGLE ROW, .100CL, VERTICAL BOARD MOUNT, CLOSED, TOP ENTRY, SHORT PNT. OF CONTACT	
		0 PLC ± - 1 PLC ± - 2 PLC ± 0.25[.010] 3 PLC ± 0.13[.005] 4 PLC ± - ANGLES ± -		WEIGHT -		SIZE A1		CAGE CODE 00779	
MATERIAL		FINISH		CUSTOMER DRAWING		DRAWING NO C-535541		RESTRICTED TO	
						SCALE 4:1		SHEET 1 OF 1	
								REV N	

Mouser Electronics

Authorized Distributor

Click to View Pricing, Inventory, Delivery & Lifecycle Information:

[Parallax:](#)

[450-01601](#)