

41EN27-2

M

DRAWING NUMBER

1926

2122224

ISSUE

1926

2122224

REVISIONS

A NEW DWG CO44351

WJM

11 JAN 80

B CO47573

T S M

11 AUG 80

C CO 48663

J M J

12 NOV 80

D CO54046

J A P

19 OCT 83

E CO-55843

KAG

28 SEP 84

F CO57370

J A P

16 MAY 85

FO-52851-A

DRAWN

WJM

11 JAN 80

C E B

14 JAN 80

C E B

14 JAN 80

FO-52851-A

DRAWN

WJM

11 JAN 80

C E B

14 JAN 80

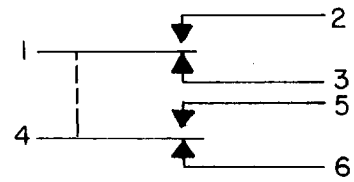
C E B

14 JAN 80

**MICRO SWITCH**  
FREEPORT ILLINOIS U.S.A.  
A DIVISION OF HONEYWELL  
FED. MFG. CODE 91929

**SWITCH - ENCLOSED**

CATALOG LISTING  
**41EN27-2**  
LOCKHEED SPEC CONTROL NO.  
LAC 613672-1



CIRCUIT DIAGRAM

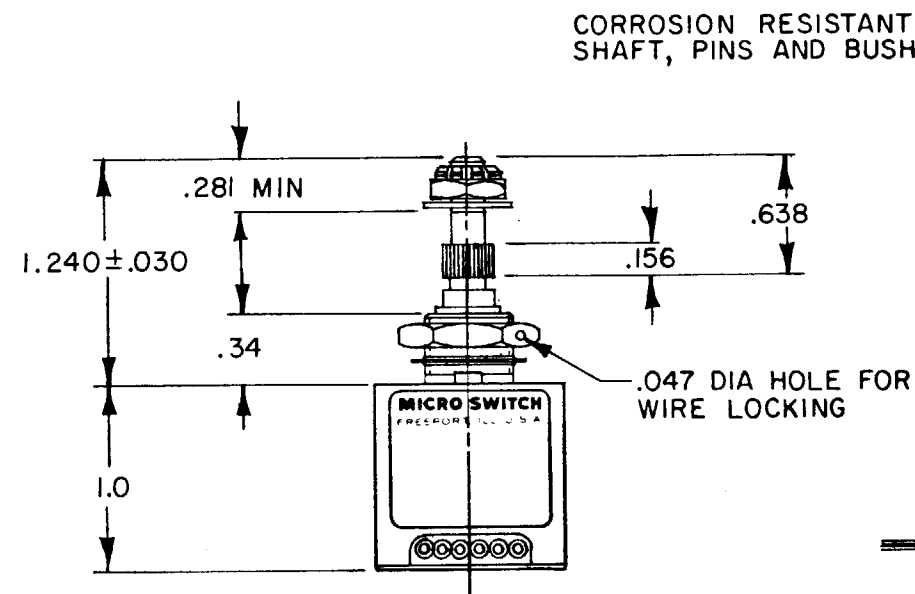
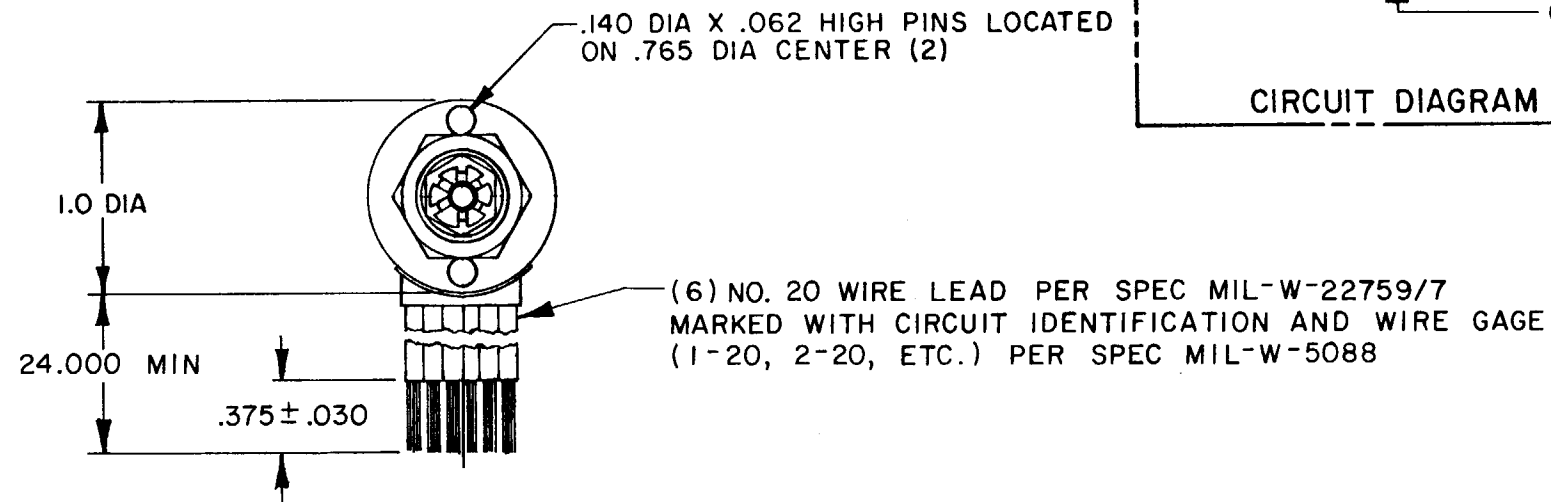
CIRCUITS 1-3 AND  
4-6 MADE  
(ACTUATED)

12° MAX  
DIFFERENTIAL  
TRAVEL

12° MAX  
DIFFERENTIAL  
TRAVEL

225° REF  
CIRCUITS 1-2  
AND 4-5 MADE  
(PRETRAVEL)

CHARACTERISTICS



CORROSION RESISTANT STEEL  
SHAFT, PINS AND BUSHING

10-32 UNF THREAD

CORROSION RESISTANT STEEL LOCKING NUT, <sup>6</sup>  
.37 ACROSS FLATS (MS 21083-N3)

SAE 1/4-36 TAPERED SERRATIONS

15/32-32 UNS THREAD TO WITHIN .062 OF SHOULDER

CORROSION RESISTANT STEEL HEX NUT, <sup>6</sup>  
.62 ACROSS FLATS X .125 THICK

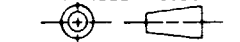
BRASS FLAT WASHER .71 DIA X .03 THICK <sup>6</sup>

NOTES

- 1 - CORROSION RESISTANT STEEL ENCLOSURE
- 2 - SWITCH SEALED PER MIL-S-8805 SYMBOL 4
- 3 - CIRCUIT DIAGRAM AND CAT. LIST. SHOWN ON NAMEPLATE
- 4 - UNIT PROVIDES NO SHAFT RESTORING FORCE. THE ACTUATING DEVICE MUST CONTROL MOVEMENT OF THE SHAFT
- 5 - LEVER ARM LOCKNUT, AND WASHER SUPPLIED WITH SWITCH
- <sup>6</sup> - HARDWARE MAY BE PACKAGED UNASSEMBLED PER MIL-S-8805

THIS DRAWING COVERS A PROPRIETARY ITEM AND IS THE PROPERTY  
OF MICRO SWITCH, A DIVISION OF HONEYWELL. THIS DRAWING IS NOT  
TO BE COPIED OR USED WITHOUT THE APPROVAL OF MICRO SWITCH.

THIRD ANGLE PROJECTION



SCALE FULL

DO NOT SCALE PRINT

TOLERANCES

APPLY TO DESIGN UNITS. CONVERSIONS ARE ONLY FOR  
REFERENCE. UNLESS NOTED, TOLERANCES ARE ±

DIM.	TOL.	DIM.	TOL.
mm	mm/in	in	mm/in
NO PLACES	X	1/64	X
ONE PLACE	X, X	0.4/0.018	X, X
TWO PLACES	X, XX	0.15/0.006	X, XX
THREE PLACES	X, XXX	0.001/0.0005	X, XXX
ANGLES			

DESIGN UNITS ☐ SI METRIC ☒ US CUSTOMARY

RAW MATERIAL—COMMERCIAL STANDARD

MICRO SWITCH STANDARDS APPLY

DIMENSIONS ARE TO BE MET BEFORE

PROTECTIVE COATINGS ARE APPLIED

WEIGHT 5.0 OZ MAX

CHARACTERISTICS

OPERATING TORQUE — — — 1.5 IN. LB MAX

PRETRAVEL  
DIFFERENTIAL TRAVEL  
OVERTRAVEL  
FREE POSITION

SEE DETAIL

ELECTRICAL DATA

CONTACT ARRANGEMENT

S P D T (2)

LOAD	28 VDC	
	SEA LEVEL	50,000 FT.
RES	4	4
IND	3	1
MOTOR	4	—
LAMP	2.4	2.4

# Mouser Electronics

Authorized Distributor

Click to View Pricing, Inventory, Delivery & Lifecycle Information:

[Honeywell:](#)

[41EN27-2](#)