



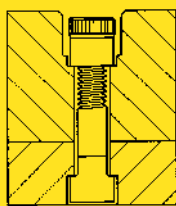
**Holo-Krome®**  
The Difference is Easy To See

800-688-8949 • [www.Holo-Krome.com](http://www.Holo-Krome.com) • Sparks, MD

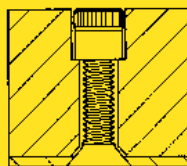
# PRODUCT DATA SHEET

## Allenuts®

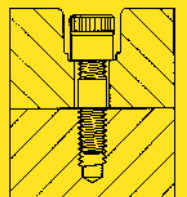
High quality, multi-purpose, internally-threaded fasteners afford compact holding power



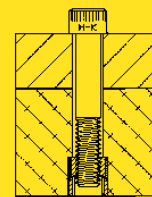
A



B



C



D

### Applications

- A. Free application of Allenut in recess with mating member a blind bolt
- B. Allenut used free with flat head capscrew in flush application to obtain surfaces unbroken by projections
- C. Semi-flush applications showing Allenut used free in counterbored hole with stud
- D. Allenut in anchored position used in non-hardened steel, cast iron and the softer non-ferrous metals. Allenuts can be pressed (or drawn by wrenching mating member) into surrounding material to give a strong heat treated thread having greatly increased load carrying capacity. Allenuts can also be molded into plastics, ceramics, fiber and similar materials to provide a high strength thread.

### Benefits:

- 12 pt (double hex) socket has 12 drawing points for easier hex key engagement
- Knurled surface allows finger "spinning" to point where wrenching force is required
- Allenuts serve as ready tapped holes, or to replace stripped or worn threads
- Available in a full range of popular sizes, UNC and UNF threads series.
- Allenuts may offer designers significant savings in space weight and materials
- Material: Heat-treated steel or austenitic stainless steel

DIAMETER THREADS PER INCH	KEY SIZE	PRODUCT CODE NUMBER
<b>#4-40</b>	<b>1/8</b>	<b>06032</b>
<b>#5-40</b>	<b>1/8</b>	<b>06034</b>
<b>#6-32</b>	<b>5/32</b>	<b>06036</b>
<b>#8-32</b>	<b>3/16</b>	<b>06038</b>
<b>#10-24</b>	<b>3/16</b>	<b>06040</b>
<b>#10-32</b>	<b>3/16</b>	<b>07030</b>
<b>1/4-20</b>	<b>1/4</b>	<b>06042</b>
<b>1/4-28</b>	<b>1/4</b>	<b>07032</b>
<b>5/16-18</b>	<b>5/16</b>	<b>06044</b>
<b>5/16-24</b>	<b>5/16</b>	<b>07034</b>
<b>3/8-16</b>	<b>3/8</b>	<b>06046</b>
<b>3/8-24</b>	<b>3/8</b>	<b>07036</b>
<b>7/16-14</b>	<b>7/16</b>	<b>06048</b>
<b>7/16-20</b>	<b>7/16</b>	<b>07038</b>
<b>1/2-13</b>	<b>1/2</b>	<b>06050</b>
<b>1/2-20</b>	<b>1/2</b>	<b>07040</b>
<b>5/8-11</b>	<b>5/8</b>	<b>06052</b>
<b>5/8-18</b>	<b>5/8</b>	<b>07042</b>
<b>3/4-10</b>	<b>3/4</b>	<b>06054</b>
<b>3/4-16</b>	<b>3/4</b>	<b>07044</b>
<b>7/8-9</b>	<b>7/8</b>	<b>06056</b>
<b>7/8-14</b>	<b>7/8</b>	<b>07046</b>
<b>1-8</b>	<b>1</b>	<b>06058</b>
<b>1-14</b>	<b>1</b>	<b>07048</b>

### Stainless Allenuts

DIAMETER THREADS PER INCH	KEY SIZE	PRODUCT CODE NUM- BER
<b>#4-40</b>	<b>1/8</b>	<b>06070</b>
<b>#6-32</b>	<b>5/32</b>	<b>06072</b>
<b>#8-32</b>	<b>3/16</b>	<b>06074</b>
<b>#10-24</b>	<b>3/16</b>	<b>06076</b>
<b>#10-32</b>	<b>3/16</b>	<b>07060</b>
<b>1/4-20</b>	<b>1/4</b>	<b>06078</b>
<b>5/16-18</b>	<b>5/16</b>	<b>06080</b>
<b>3/8-16</b>	<b>3/8</b>	<b>06082</b>