

EMC Components

ZFM-00 Series

EMC Filters for AC Power Supply Cylindrical

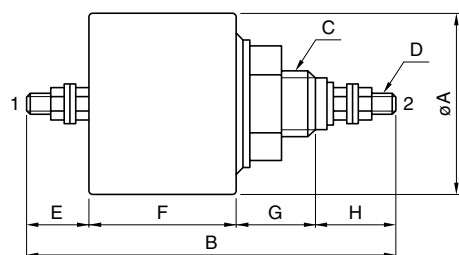
FEATURES

- The ZFM-00 series are high-frequency, large current, feed-through type EMC filters. They feature an inductor (SF coil) with a high magnetic flux density dust core and a feed-through ceramic capacitor with superior high-frequency bypass characteristics.
- The ZFM2206-00 exhibits over 20dB of common mode noise attenuation over a wide band of frequencies – from 1.5 to 1000MHz.
- Leakage current is maintained at less than 1mA.

APPLICATIONS

General control devices, numerically controlled devices, computers and other terminal devices, and industrial devices.

SHAPES AND DIMENSIONS



Dimensions in mm

Part No.	øA	B	C	D	E	F	G	H
ZFM2206-00, 2215-00	42	93max.	M16×1.5	M5×0.8	15	35	18	20

• Case: metal, terminal: stud

ELECTRICAL CHARACTERISTICS

Part No.	ZFM2206-00		ZFM2215-00
Rated voltage Eac/Edc(V)	250/500		250/500
Rated current Iac/Idc(A)	6		15
Test voltage Eac(V)[Between terminal and case]	1500		1500
Insulation resistance(MΩ)	100min.		100min.
[DC: 500V, 1min/between terminal and case]			
Leakage current(mA)[250V • 60Hz]	1max.		1max.
DC resistance(mΩ)	150max.		20max.
Operating temperature range(°C)[Including self-temperature rise]	-10 to +85		-10 to +85
With derating over(°C)	55		55
Temperature rise(°C)	30max.		30max.
Attenuation frequency range (MHz)[+5 to +35°C]	Differential mode at 20dB	1.5 to 1000	3 to 1000
	Common mode at 40dB	3 to 1000	5 to 1000
Weight(g)	240		240

EMC Components

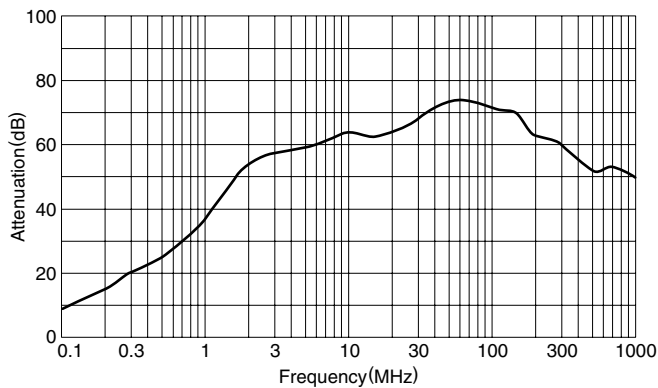
EMC Filters for AC Power Supply Cylindrical

ZFM-00 Series

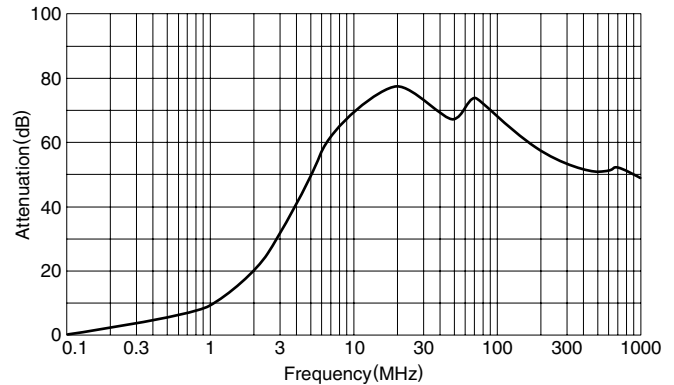
TYPICAL ELECTRICAL CHARACTERISTICS

ATTENUATION vs. FREQUENCY CHARACTERISTICS

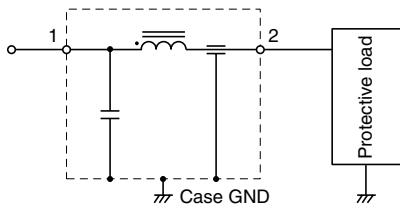
ZFM2206-00



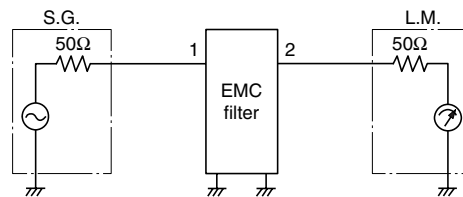
ZFM2215-00



CIRCUIT DIAGRAM



MEASURING CIRCUIT

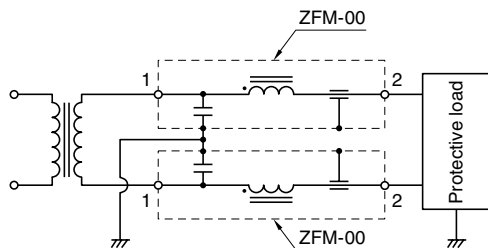


Attenuation = $20 \log_{10}(E_2/E_1)$ [dB]
 E₁: Set EMC filter in the circuit
 E₂: Leave EMC filter in the circuit

TYPICAL APPLICATIONS

(Personal computer with CRT display)

Connection via isolation transformer



Directly connection to power supply

