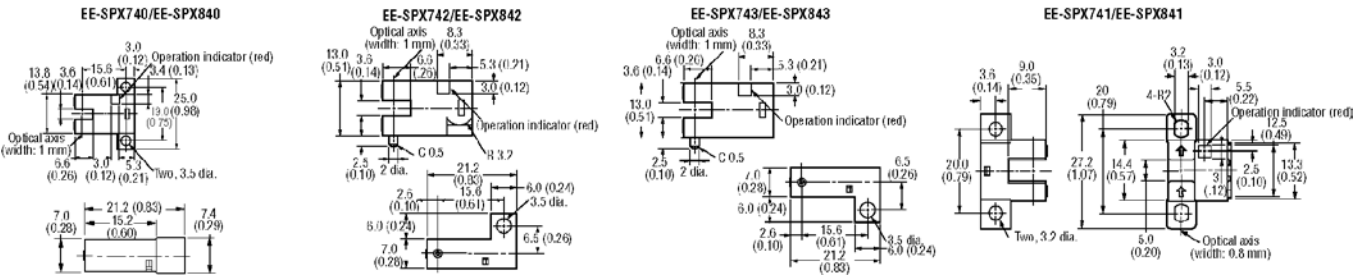


EE-SPX Series Photomicrosensors

NEW

4



EE-SPX series photomicrosensors feature recessed connectors with powerful light modulation. Ideal for mounting in tight spaces. Connectors have built in safety locks for shock and vibration. Simple to replace sensors without rewiring. Several mounting configurations available. Ideal for industrial applications. **Output Specifications:** 50 mA load current with 1.0 V residual voltage; 10 mA load current with 0.4 V residual voltage. **Response Frequency:** 500 Hz. **Sensing Method:** Transmissive. **Sensing Distance:** 3.6 to 5.0 mm. **Power Requirements:** 5 to 24 VDC ±10%, 5% max. ripple peak to peak.

Stock No.	Mfr.'s Type	Output Type	Slot Width (mm)	EACH		
				1-24	25-99	100-249
821-7124	EE-SPX740	Dark-ON	3.6	59.27	54.41	46.64
821-7138	EE-SPX840	Light-ON	3.6	59.27	54.41	46.64

Stock No.	Mfr.'s Type	Output Type	Slot Width (mm)	EACH		
				1-24	25-99	100-249
821-7139	EE-SPX742	Dark-ON	3.6	59.27	54.41	46.64
821-7140	EE-SPX842	Light-ON	3.6	59.27	54.41	46.64
821-7141	EE-SPX743	Dark-ON	3.6	59.27	54.41	46.64
821-7142	EE-SPX843	Light-ON	3.6	59.27	54.41	46.64
821-7143	EE-SPX741	Dark-ON	5.0	59.27	54.41	46.64
821-7144	EE-SPX841	Light-ON	5.0	59.27	54.41	46.64

821-7145. EE-1013. Connector EACH 4.11

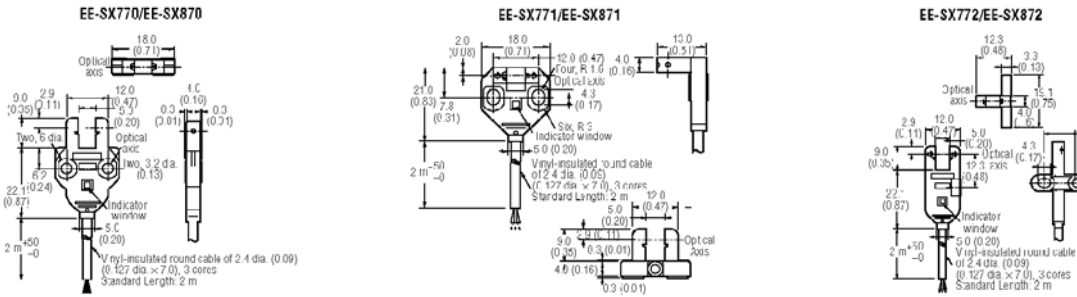
Amplified Sensors — Sensing Heads Detect Objects in Front of Mirror-Like Backgrounds



Convergent beam reflective sensors with built-in amplifier offers 5 mm sensing distance to solve these tough detection problems — objects in front of highly reflective backgrounds at least 20 mm away; dark colored objects; small, thin objects such as 0.05 mm diameter pure copper wire. Modulated infrared light source reduces external light interference. Choose top or side sensing models. Operation indicator allows monitoring. Wire directly to sensor or use optional EE-1001 unwired or EE-1006 prewired connectors for convenience in servicing. **Output Specifications:** 80 mA load with 1.0 V residual voltage; 10 mA load 0.4V residual voltage when driving TTL. **Response Frequency:** 100 Hz. **Sensing Method:** Convergent beam reflective. **Sensing Distance:** 2 to 6 mm (5 mm rated distance) with 15 × 15 mm 90% reflectance white mat paper 0.2 mm differential distance at 3 mm sensing distance. **Power Requirements:** 5-24 VDC ±10% 5% max. ripple peak 15 mA current consumption 50 mA max. at peak.

Stock No.	Mfr.'s Type	Output Type	Sensing Face Position	EACH
821-8105	EE-SPY411	Light-ON	Side Face	31.77
821-8106	EE-SPY312	Dark-ON	Top	41.95
821-8107	EE-SPY412	Light-ON	Top	29.17

EE-SX77/EE-8SX87 5 mm Photomicrosensors



Thin, compact photomicrosensor with attached, pre-wired, flexible cable. Allows standard M3-screw mounting. Indicators visible from both sides. **Cable Length:** 2 m. **Supply Voltage:** 5-24 VDC. **Sensing Method:** Through-Beam (slot). **Sensing**

Distance: 5 mm. Available in standard, L-shaped, and T-shaped.

Stock No.	Mfr.'s Type*	Body	Output Type	EACH		
				1-24	25-99	100-499
821-8232	EE-SX770	Standard	Dark-ON	20.45	17.33	15.02
821-8234	EE-SX870	Standard	Light-ON	20.45	17.33	15.02
821-8236	EE-SX771	L-shaped	Dark-ON	21.65	18.35	15.90

Stock No.	Mfr.'s Type*	Body	Output Type	EACH		
				1-24	25-99	100-499
821-8238	EE-SX871	L-shaped	Light-ON	22.30	18.90	16.38
821-8240	EE-SX772	T-shaped	Dark-ON	22.56	19.12	16.57
821-8242	EE-SX872	T-shaped	Light-ON	23.24	19.69	17.07

*PNP outputs available, specify by adding suffix (p) to the part number.