

ALL RIGHTS RESERVED. NO PORTION OF THIS PUBLICATION, WHETHER IN WHOLE OR IN PART CAN BE REPRODUCED WITHOUT THE EXPRESS WRITTEN CONSENT OF SPC TECHNOLOGY.

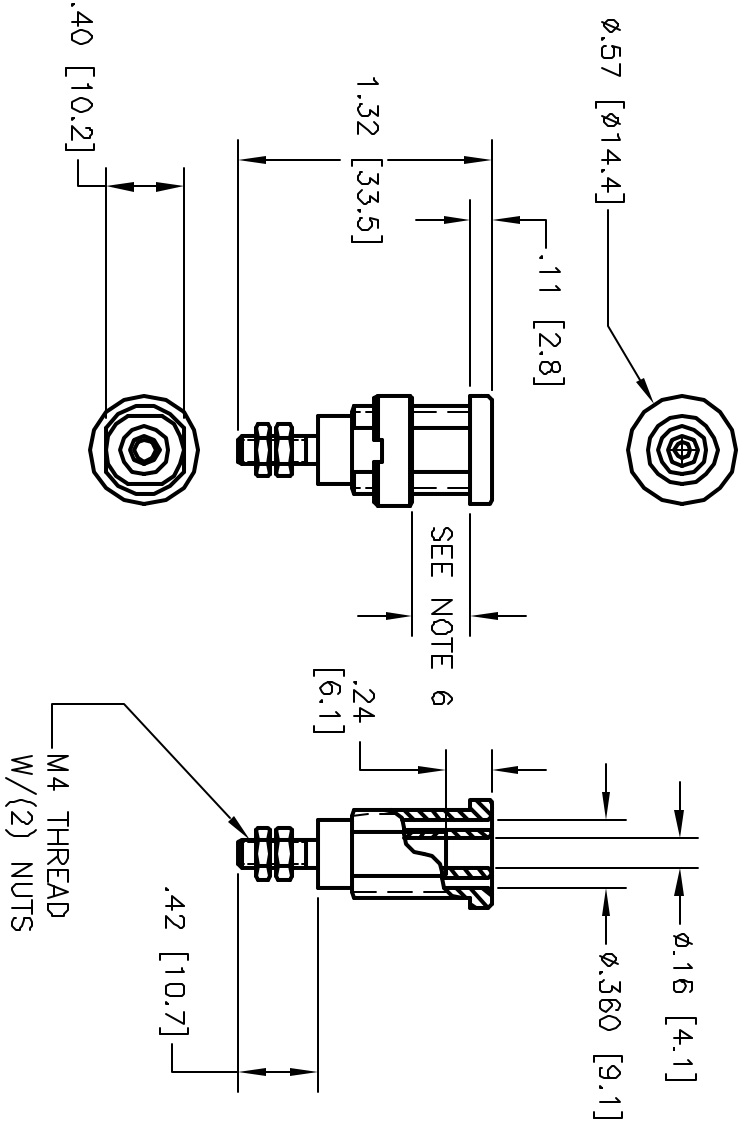
REVISIONS			DOC. NO.	SPC-FD05	Effective:	12/21/98	•	DCP No.	860
DCP #	REV	DESCRIPTION	DRAWN	DATE	CHECKD	DATE	APPRVD	DATE	
170	A	RELEASED	SAS	07/07/99	JJC	12/21/99	DJC	12/28/99	

NOTES:

1. SAFETY SOCKET W/ M4 STUD & (2) NUTS.
2. SPECIFICATIONS:
INSULATOR: POLYACETAL
CONTACT: BRASS, NICKEL PLATED
LOCKING NUT: BRASS, NICKEL PLATED
3. RATING:
VOLTAGE: 1000V CATIII P2 (IEC1010-1)
CURRENT: 36A MAX.
RESISTANCE: <5 milliohms.
TEMPERATURE: -20° C TO +80° C.
4. MOUNTING HOLE: REF. DIAGRAM
5. INSULATOR THREAD, M12 X 0.75
6. MAXIMUM PANEL THICKNESS: .40 (10.2).

.420±.004 [10.7±0.1]

MOUNTING HOLE



DISCLAIMER
ALL STATEMENTS AND TECHNICAL INFORMATION CONTAINED HEREIN ARE BASED UPON INFORMATION AND/OR TESTS WE BELIEVE TO BE ACCURATE AND RELIABLE. SINCE CONDITIONS OF USE ARE BEYOND OUR CONTROL, THE USER SHALL DETERMINE THE SUITABILITY OF THE PRODUCT FOR THE INTENDED USE AND ASSUME ALL RISK AND LIABILITY WHATSOEVER IN CONNECTION THEREWITH.



SPC TECHNOLOGY

Tolerances Unless
Otherwise Specified
Fractions $\pm 1/32$
Decimals
.XX $\pm .01$
.XXX $\pm .005$

DRAWN BY:	DATE:
SCOTT SERRITELLA	07/07/99
CHECKED BY:	DATE:
JOHN COLE	12/21/99
APPROVED BY:	DATE:
DANIEL CAREY	12/28/99

DRAWING TITLE:

SAFETY SOCKET, STUD, RED

SIZE	DWG. NO.	ELECTRONIC FILE	REV
A	2265	92N4627.DWG	A
SCALE:	NTS	U.O.M.: INCHES [mm]	SHEET: 1 OF 1