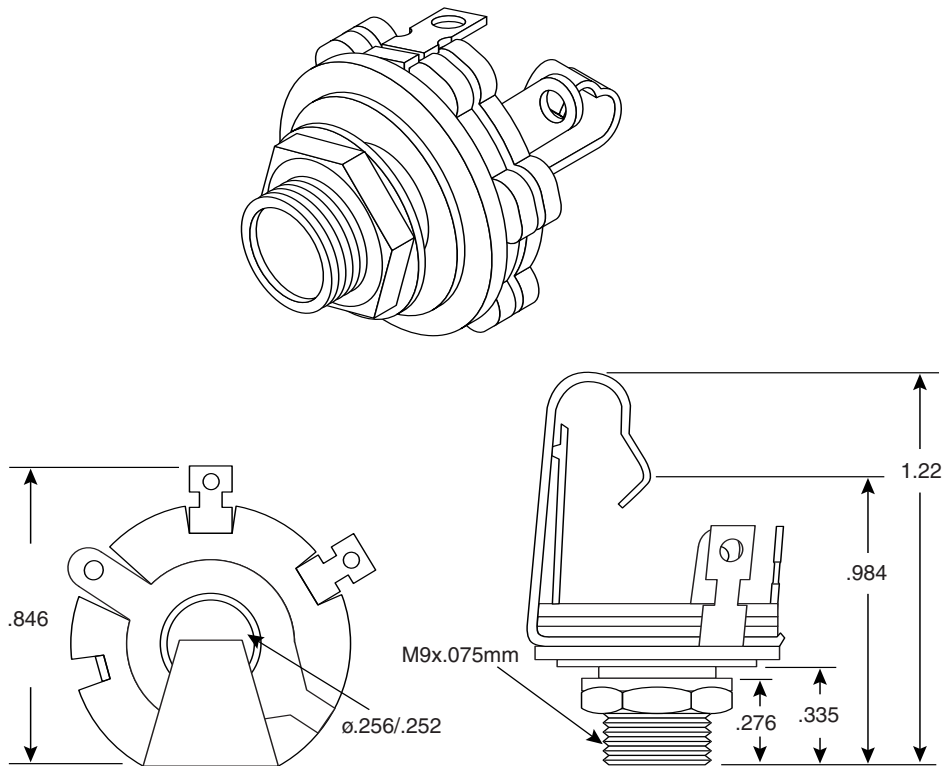


# 1/4" Chassis Mount Jack

16PJ020

KOBI CONN

1/4" Chassis Mount Jack



Dimensions: In.  
(Except where noted)

SPECIFICATIONS	
Type:	1/4" N/C chassis mount w/switch
Threaded metal & spring contacts:	nickel plated brass
Ring terminal & metal washer:	nickel plated steel
Insulators:	Duracon
Contact resistance:	50mΩ min. @ DC500V
Insulation withstand voltage:	AC500V @ 1 min.

Date Last Revised: 4-15-05

Available from Mouser Electronics  
1-800-346-6873  
www.mouser.com

KC-300500

16PJ020

# Mouser Electronics

Authorized Distributor

Click to View Pricing, Inventory, Delivery & Lifecycle Information:

[Kobiconn:](#)

[16PJ020](#)