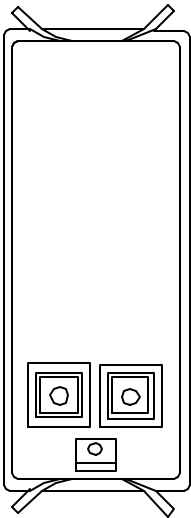
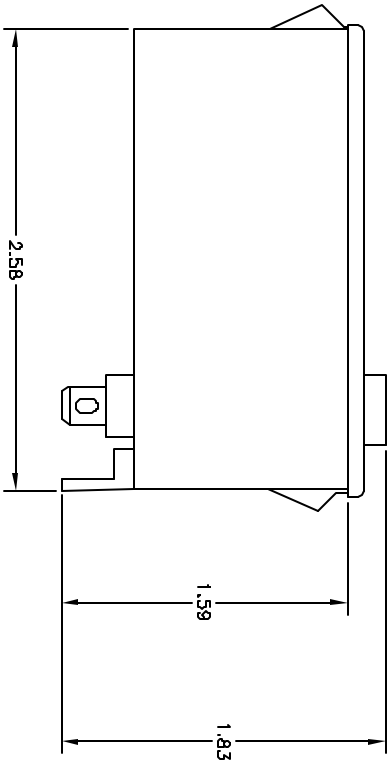
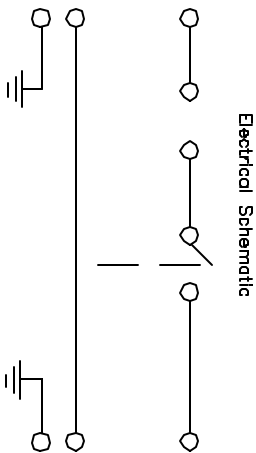
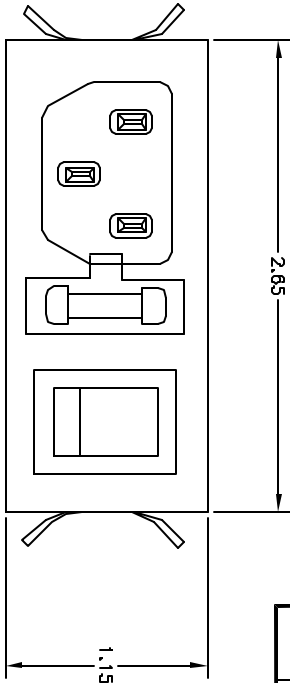


REVISIONS				DDC. NO. SPC-FD05, Total Pages: 2			
DCP #	REV	DESCRIPTION	DRAWN	DATE	CHECKD	DATE	APPRVD
162	A	RELEASED	J.W.M.	12/29/97	J.C.	2/4/98	B.B.



Electrical Characteristics:
Rated Current:
UL/CSA @ 115/250 VAC: 6/6 AMP
VDE @ 250 VAC: 10 AMP

SPST Power Switch:
UL/CSA @ 125/250 VAC: 6 AMP
VDE @ 250 VAC: 6 AMP

Single 5x20mm Fuseholder

.250 Faston Terminals

Flammability Class UL94V-0

Metal Case

Snap-In Mount for Panel Thickness 1.0 - 1.8mm (.04"-.07")

DISCLAIMER
ALL STATEMENTS AND TECHNICAL INFORMATION CONTAINED HEREIN ARE BASED UPON INFORMATION AND/OR TESTS WE BELIEVE TO BE ACCURATE AND RELIABLE. SINCE CONDITIONS OF USE ARE BEYOND OUR CONTROL, THE USER SHALL DETERMINE THE SUITABILITY OF THE PRODUCT FOR THE INTENDED USE AND ASSUME ALL RISK AND LIABILITY WHATSOEVER IN CONNECTION THEREWITH.



SPC TECHNOLOGY

DRAWN BY:

Jeff McVicker

DATE:

12/29/97

CHECKED BY:

JOHN COLE

DATE:

2/4/98

APPROVED BY:

BRETT BRAATZ

DATE:

2/5/98

DRAWING TITLE:

Power Entry Module

SIZE DWG. NO.

A

2165

ELECTRONIC FILE

92N4168.dwg

REV

A