

DESCRIPTION

ArcLine is a premium grade specification lensed troffer series. This innovative, high quality luminaire is dedicated to the latest lamp and micro electronic ballast technology for optimal performance and energy efficiency. The ArcLine is compatible with all of today's popular ceiling systems and is available with a number of options and accessories for application versatility.

The ArcLine series features efficiency, quality and performance. The series is an excellent choice for commercial office spaces, schools, hospitals or retail merchandising areas.

SPECIFICATION FEATURES

Construction

Rigid housing is die formed of code gauge prime cold rolled steel and features full length die-formed stiffeners and unibody endplate for added strength. Side flanges are hemmed. Innovative design provides superior lens brightness uniformity and visual comfort. Micro ballast cover*** reduces ballast shadow for superior lens brightness uniformity and is easily removed without tools. Die formed captive lampholder brackets fully enclose lampholder wiring permitting easy lampholder replacement. Unibody endplates are securely attached with interlocking tabs and screws. Four auxiliary fixture end suspension points provided. Ample KOs are provided for continuous row wiring. Endplates have integral Grid-lock feature for safety and convenience.

Electrical

Ballasts are CBM/ETL Class "P" and are positively secured by mounting bolts. Rotor-lock lampholders ensure positive lamp retention. UL/CUL listed. Suitable for damp locations.

Finish

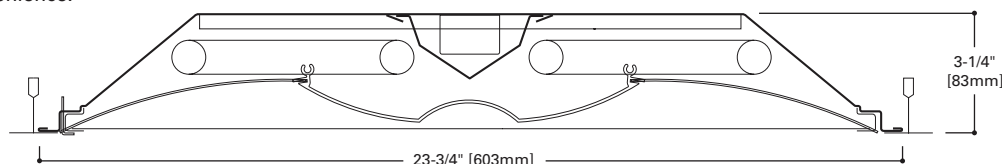
Multistage, iron phosphate pretreatment ensures maximum bonding and rust inhibition. Housing and ballast cover finished with new 90% reflective white enamel for superior performance.

Hinging/Latching

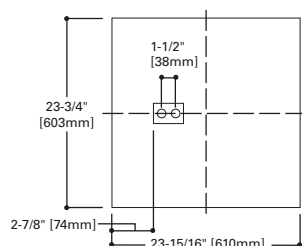
Positive cam action steel latches with baked white enamel finish. Safety-lock T-hinges allow hinging and latching either side. Door assembly hinges down for easy access from below without tools.

Frame/Shielding

Die formed, heavy gauge, flat steel door with reinforced mitered corners and paint after fabrication, baked matte white enamel finish. Positive light seals. Light stabilized, acrylic frosted lens.



MOUNTING DATA



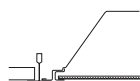
DOOR FRAMES

ALN
Flat, White Steel



CEILING COMPATIBILITY

G
Grid/Lay-in
Standard



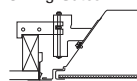
G
Concealed T



G
Slot Grid



F
Flange Trim
With Supporting
Swing Gates



Ceiling
Type

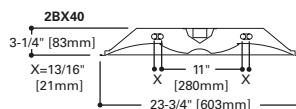
Exposed Grid
Concealed T
Slot Grid
Flange

Trim
Type

G
G
G
F

(Verify compatibility/ consult factory.)

LAMP CONFIGURATIONS



**2ALN
2BX40**

**2' X 2' TROFFER
2 LAMPS**

Specification Architectural
Troffer

For Use In Insulated
Ceilings



ENERGY DATA

Input Watts:
EB Ballast & STD Lamps
2BX40 (69)

*Reference the lamp/ballast data in the Technical Section for specific lamp/ballast requirements.

**Consult Pre Sales Technical Support.

***Low profile emergency unit option only.

****When ordering Flange Kit for installation in drywall ceilings, see options and accessories compatibility section and ordering logic.

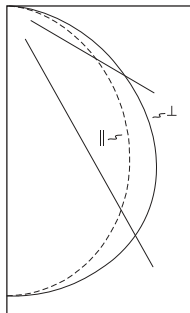
LAMPS CONTAIN MERCURY. DISPOSE ACCORDING
TO LOCAL, STATE OR FEDERAL LAWS

LINEAR DISCONNECT

Safe and convenient means of
disconnecting power.



PHOTOMETRICS

**2ALNG-BX40-UNV-EB81-U**

Electronic Ballast

(2) F40BX/SPX35/RS

Lamps, 3150 Lumens

Spacing criterion:

(H) 1.2 x mounting

height, (L) 1.3 x

mounting height

Efficiency 74.4%

Test Report: 2ALNG-

BX40-UNV-EB81-U.IES

LER = FL61

Yearly Cost of 1000

lumens, 3000 hrs at

.08 KWH = \$3.93

Candlepower

Angle	Along H	45°	Across L
0	1675	1675	1675
5	1664	1670	1675
10	1634	1650	1665
15	1585	1615	1643
20	1518	1566	1610
25	1433	1503	1568
30	1335	1428	1511
35	1226	1338	1435
40	1103	1234	1338
45	976	1115	1219
50	846	986	1085
55	713	846	932
60	583	701	775
65	456	560	626
70	340	429	478
75	234	307	328
80	139	192	202
85	58	83	89
90	0	0	0

Coefficients of Utilization

Effective floor cavity reflectance												20%									
rc	80%				70%				50%				30%				10%				0%
rw	70	50	30	10	70	50	30	10	50	30	10	50	30	10	50	30	10	0			
RCR																					
0	89	89	89	89	87	87	87	87	83	83	83	79	79	79	76	76	76	74			
1	81	77	74	71	79	76	73	70	73	70	68	70	68	66	67	65	64	62			
2	74	68	63	58	72	66	62	58	64	60	56	61	58	55	59	56	54	52			
3	67	59	53	49	65	58	53	48	56	51	47	54	50	46	52	49	46	44			
4	62	53	46	41	60	52	46	41	50	44	40	48	43	40	46	42	39	38			
5	57	47	40	35	55	46	40	35	45	39	35	43	38	34	42	38	34	33			
6	52	42	36	31	51	42	35	31	40	35	31	39	34	30	38	33	30	28			
7	49	38	32	27	47	38	32	27	37	31	27	36	31	27	35	30	27	25			
8	45	35	29	24	44	35	29	24	34	28	24	33	28	24	32	27	24	22			
9	42	32	26	22	41	32	26	22	31	26	22	30	25	22	29	25	22	20			
10	40	30	24	20	39	29	24	20	29	23	20	28	23	20	27	23	20	18			

Zonal Lumen Summary

Zone	Lumens	%Lamp	%Fixture
0-30	1307	20.7	27.9
0-40	2140	34.0	45.6
0-60	3739	59.4	79.7
0-90	4690	74.4	100.0
0-180	4690	74.4	-100.0

Luminance Data

Angle in Deg	Average 0-Deg cd/sm	Average 45-Deg cd/sm	Average 90-Deg cd/sm
45	4736	5411	5915
55	4265	5061	5575
65	3702	4547	5083
75	3102	4070	4348
85	2283	3268	3504

ORDERING INFORMATION

SAMPLE NUMBER: 2ALNG-2BX40-UNV-EB81-U

Rating Blank= Standard ATW-SW4 = Chicago Rated	Width 2'-2" Width	Series ALN=ArcLine Series	Trim Type G =Grid/Lay-in (Standard) ⁽¹⁾ G =Concealed T G =Slot Grid F =Flange Trim ⁽⁴⁾	Door Frame Standard =Flat White Steel Door (Leave Blank)	Number of Lamps 2=2 Lamps (Not included)	Wattage (Length) BX40 =40W Biaxial (24")	Shielding Blank =Smooth Frosted Acrylic (standard)	Option – Aluminum Flange Trim⁽⁴⁾ Blank =SW (Single White) Type Color 'S' Single 'N' Natural 'R' In Row 'W' White 'E' End of Row	Voltage⁽²⁾ 347V =347 Volt UNV =Universal Voltage 120-277 ⁽³⁾	Options GL =Single Element Fuse GM =Double Element Fuse Lamps =Lamps Installed (see options and accessories) Flex =Flex Installed (Reference Flex ordering information) EL =Emergency Installed ⁽⁵⁾	Ballast Type EB5 = T5 Biac Electronic Instant ⁽⁶⁾ Start. Total Harmonic Distortion < 20% TEB5 = T5 Biac Electronic Instant ⁽⁶⁾ Start. Total Harmonic Distortion < 10% ER5 = T5 Biac Electronic Program Rapid Start. Total Harmonic Distortion < 10% Fifthlight Ballasts⁽⁷⁾ 5LT5B = T5 Biac DALI Program Rapid Start. Total Harmonic Distortion < 10%. Ballast Factor 1.0	Options G1 =Gasket, Door Frame and Housing G2 =G1 plus Gasket between Lens and Door G3 =G1 and G2 plus Gasketing on Mounting Surface of Fixture Trims	Packaging U =Unit Pack PALC =Job Pack, in carton
Number of Ballasts 1=1 Ballast					ACCESSORIES EQ-CLIP-U =T-BAR Safety Earthquake Clips ⁽¹⁾ FCTKA-22W-U =Field Installed Flange Kit								

NOTES: ⁽¹⁾ An EQ Grid Clip is recommended for all 9/16" ceiling systems. ⁽²⁾ Products also available in non-US voltages and frequencies for international markets. ⁽³⁾ Not available when specifying emergencies, voltage must be specific. ⁽⁴⁾ Specify row configuration, type in catalog number when ordering complete fixture. ⁽⁵⁾ Low profile emergency unit only, no access plate wire through end plate. Please specify voltage. ⁽⁶⁾ Not available in UNV voltages. Must specify voltage. ⁽⁷⁾ For a complete listing of Fifthlight Technology products and other solutions from Cooper Controls, visit www.coopercontrol.com

Specifications & dimensions subject to change without notice. Consult your Cooper Lighting Representative for availability and ordering information.

FCTK Trim Kit Field Convertible Aluminum	A - 24 22=2' x 2' 24=2' x 4'	R W - U N=Natural W=White U=Unit Pack
Blank =Single R =In Row E =End Row		

SHIPPING DATA

Catalog No.	Wt.
2ALNG-2BX40A	15 lbs.