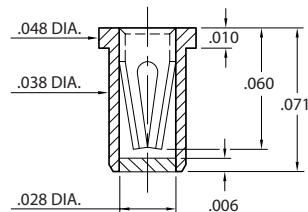


- These through-hole (tubular) receptacles are designed for hand, wave or reflow* soldering. The **ORGANIC FIBRE PLUG®** barrier prevents solder, paste or flux from contaminating the spring contact.
- After soldering, the **OFP®** barrier is pushed out of the receptacle when the device is plugged in.
- All parts are available as discrete receptacles; but for SMT assembly, certain receptacles are supplied on carrier tape per EIA-481 to feed industry standard pick and place machines.



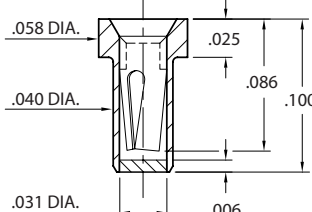
Intrusive reflow (also called "pin-in-paste") is a technique of using conventional through-hole components in a reflow soldering process. The receptacles are placed into plated through-holes in the circuit board (solder paste has previously been screen printed on pads adjacent to the holes) and the board is reflowed in the same pass as other SMT components. Solder will fill the plated through-holes and achieve solder joints as reliable as wave soldering. The **OFP® barrier prevents solder paste from being picked-up inside the contact during pick 'n place assembly. "Overprinting" paste on the solder mask can be used to adjust the volume of paste required to fill each hole.*

5359



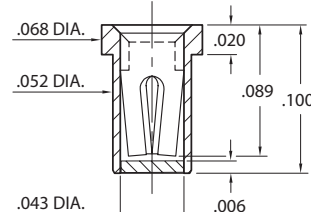
5359-0-XX-XX-10-XX-10-0
Solder mount in $\varnothing.043 \pm .003$ PTH.
#10 Contact for $\varnothing.012$ -.017 pins.
Also available on 16mm wide carrier tape: 3,000 parts per 13" reel.

0577



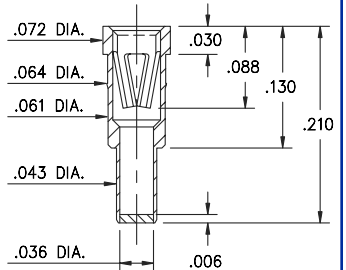
0577-0-XX-XX-21-XX-10-0
Solder mount in $\varnothing.045 \pm .003$ PTH.
#21 Contact for $\varnothing.015$ -.022 pins.
Also available on 12mm wide carrier tape: 3,000 parts per 13" reel.

4015



4015-0-XX-XX-30-XX-10-0
Solder mount in $\varnothing.057 \pm .003$ PTH.
#30 Contact for $\varnothing.015$ -.025 pins.
Also available on 8mm wide carrier tape: 5,500 parts per 13" reel.

3435



3435-0-XX-XX-47-XX-04-0
Solder mount in $\varnothing.046 \pm .003$ PTH.
#47 Contact for $\varnothing.025$ -.036 and .025" square pins.

SPECIFICATIONS

SHELL MATERIAL:
Brass Alloy 360, 1/2 Hard
CONTACT MATERIAL:
Beryllium Copper Alloy 172, HT
SOLDER BARRIER:
Organic Fibre Plug®
DIMENSION IN INCHES
TOLERANCES ON:
LENGTHS: $\pm .005$
DIAMETERS: $\pm .002$
ANGLES: $\pm 2^\circ$

ORDER CODE: XXXX - 0 - XX - XX - XX - XX - 10 - 0

BASIC PART # →

SPECIFY PACKAGING: →

43 Discrete Receptacles
67 Supplied on 13" Reels

SPECIFY SHELL FINISH: →

01 200μ" TIN/LEAD OVER NICKEL
80 200μ" TIN OVER NICKEL ◇

CONTACT # →

SPECIFY CONTACT FINISH:

27 30μ" GOLD OVER NICKEL ◇
02 100μ" TIN/LEAD OVER NICKEL
84 100μ" TIN OVER NICKEL ◇

#10, #21, #30 or #47 CONTACT (DATA ON PAGES 216, 217, 218 & 221)

