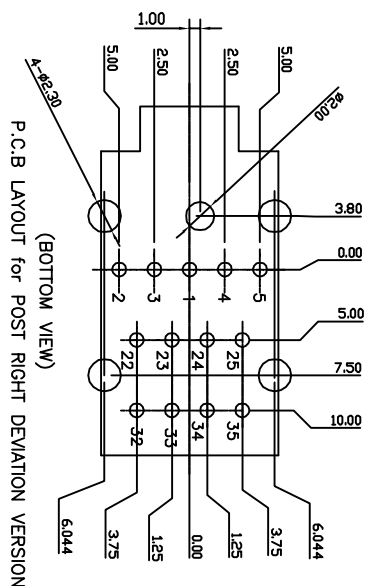
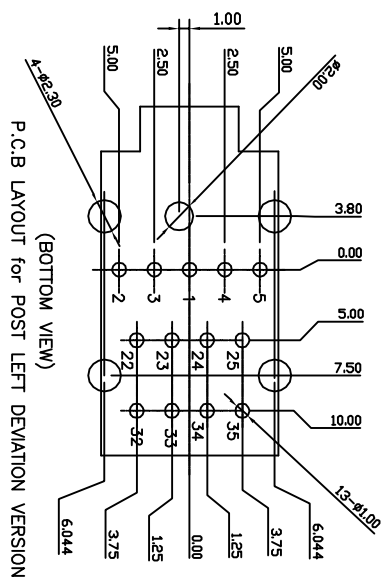
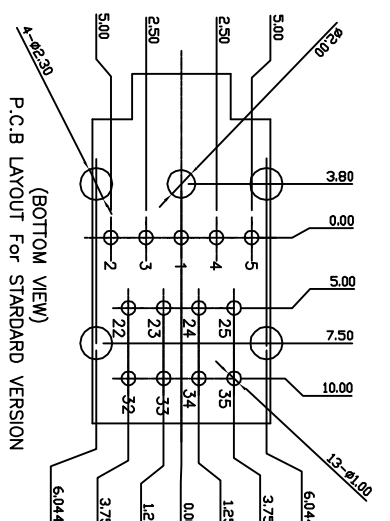


| mat'l. code | | tolerances unless otherwise specified | | CUSTOMER COPY | | FCI | |
|-------------|----------|---------------------------------------|----------|----------------|--------------|------------|--------------------------------|
| litr | ecn no | dr | date | linear | .XX ± 0.30 | projection | title |
| A | T04-0040 | W.L | 11/01/04 | | .XX ± 0.20 | | SMART AUDIO JACK 3-PORT |
| B | T05-0069 | W.L | 3/29/05 | | .XX ± 0.05 | | ATX (ST3019 SMART TYPE SERIES) |
| C | T05-0127 | W.L | 6/08/05 | angles | 0° ± 2° | | |
| D | T07-1106 | J.H | 6/22/07 | dr | WADE LIU | 11/01/04 | |
| | | | | engr | WADE LIU | 11/01/04 | |
| | | | | chr | WADE LIU | 11/02/04 | |
| | | | | ppd | STERLING LIN | 11/02/04 | |
| | | | | scale | | N/A | |
| | | | | size | | A4 | |
| | | | | product family | | A/J | |
| | | | | size dwg no | | 10045249 | |
| | | | | code | | TWN | |
| | | | | sheet | | 1 of 2 | |

| sheet | revision | sheet | 1 | 2 | 3 | 4 | 5 | 6 | 7 | 8 | 9 | 10 | 11 | 12 | 13 | 14 | 15 | 16 | 17 | 18 | 19 | 20 | 21 | 22 | 23 | 24 | 25 | 26 | 27 | 28 | 29 | 30 | 31 | 32 | 33 | 34 | 35 | 36 | 37 | 38 | 39 | 40 | 41 | 42 | 43 | 44 | 45 | 46 | 47 | 48 | 49 | 50 | 51 | 52 | 53 | 54 | 55 | 56 | 57 | 58 | 59 | 60 | 61 | 62 | 63 | 64 | 65 | 66 | 67 | 68 | 69 | 70 | 71 | 72 | 73 | 74 | 75 | 76 | 77 | 78 | 79 | 80 | 81 | 82 | 83 | 84 | 85 | 86 | 87 | 88 | 89 | 90 | 91 | 92 | 93 | 94 | 95 | 96 | 97 | 98 | 99 | 100 |
|-------|----------|----------|---|---|---|---|---|---|---|---|---|----|----|----|----|----|----|----|----|----|----|----|----|----|----|----|----|----|----|----|----|----|----|----|----|----|----|----|----|----|----|----|----|----|----|----|----|----|----|----|----|----|----|----|----|----|----|----|----|----|----|----|----|----|----|----|----|----|----|----|----|----|----|----|----|----|----|----|----|----|----|----|----|----|----|----|----|----|----|----|----|----|----|----|----|----|----|----|----|----|----|-----|
| index | sheet | revision | 1 | 2 | 3 | 4 | 5 | 6 | 7 | 8 | 9 | 10 | 11 | 12 | 13 | 14 | 15 | 16 | 17 | 18 | 19 | 20 | 21 | 22 | 23 | 24 | 25 | 26 | 27 | 28 | 29 | 30 | 31 | 32 | 33 | 34 | 35 | 36 | 37 | 38 | 39 | 40 | 41 | 42 | 43 | 44 | 45 | 46 | 47 | 48 | 49 | 50 | 51 | 52 | 53 | 54 | 55 | 56 | 57 | 58 | 59 | 60 | 61 | 62 | 63 | 64 | 65 | 66 | 67 | 68 | 69 | 70 | 71 | 72 | 73 | 74 | 75 | 76 | 77 | 78 | 79 | 80 | 81 | 82 | 83 | 84 | 85 | 86 | 87 | 88 | 89 | 90 | 91 | 92 | 93 | 94 | 95 | 96 | 97 | 98 | 99 | 100 |

code 22526



NOTE :

1. DIMENSIONING AND TOLERANCING PER ANSI Y14.5M - 1982.
2. OUTER SHIELD NOT CONNECTED TO GROUND CONTACTS (PIN 1).

3. MATERIAL :

- 3.1. INSULATOR : THERMOPLASTIC UL 94V-0.
- 3.2. LEAD MATERIAL : COPPER ALLOY.
- 3.3. LEAD FINISH : 50u" MIN. NICKEL UNDERPLATING, 100u" MATTE TIN PLATING ON SOLDER TAIL AND SELECTIVE GOLD PLATED ON CONTACT AREA.
- 3.4. SHIELD MATERIAL & FINISH : COPPER ALLOY OR CARBON STEEL, OVERALL 50u" MIN. NICKEL UNDERPLATING, SELECTIVE 100u" MATTE TIN PLATED ON SOLDER TAIL.
4. PRODUCT SPECIFICATION : GS-12-160
- PACKAGING SPECIFICATION : GS-14-892
5. 10045249-XXLXF: THE HOUSING WILL BE WITHSTANDING EXPOSURE TO 260° PEAK TEMPERATURE FOR 10 SECONDS IN A WAVE SOLDER APPLICATION.

*PART NUMBER DESCRIPTION:

10045249-X X X X X

LEAD FREE

MATERIALS OF SHIELDING

A: CARBON STEEL

COLOR ARRANGEMENT

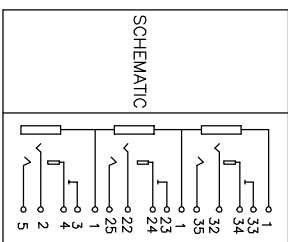
SEE TABLE

DESIGN VARIATION:



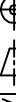
STANDARD VERSION
STANDARD DEVIATION VERSION

PSOT RIGHT DEVIATION VERSION

PLATING CODE:



| | | | |
|-----------------|-----------------|--|--|
| 10045249-1X1ALF | N/A | TIN PLATING ON SOLDER TAIL AND GOLD FLASH PLATING ON CONTACT AREA | A: Black B: Orange 157C C: Gray 420C |
| 10045249-1X3ALF | | TIN PLATING ON SOLDER TAIL AND GOLD FLASH PLATING ON CONTACT AREA | A: Orange 157C B: Black C: Gray 420C |
| 10045249-1X2LF | N/A | TIN PLATING ON SOLDER TAIL AND GOLD FLASH PLATING ON CONTACT AREA | A: Pink 701C B: Light Blue 284C C: Lime 577C |
| 10045249-1X1LF | 10045249-1X1ALF | TIN PLATING ON SOLDER TAIL AND GOLD FLASH PLATING ON CONTACT AREA | A: Light Blue 284C B: Lime 577C C: Pink 701C |
| PRODUCT NO. | | PLATING OPTION DESCRIPTION | COLOR SEQUENCE |

| | | | | | | | | | |
|----------------|-------------------|----|---------------------------|--|---|--|-----------------------|---|-----------------|
| mat'l. code | | | | tolerances unless otherwise specified | | CUSTOMER COPY | |  www.fciconnect.com | |
| it | ecn no | dr | date | .X ± 0.30 |  | title SMART AUDIO JACK 3-PORT ATX (ST3019 SMART TYPE SERIES) | product family A/J | code TWN | |
| D | | | linear .XX ± 0.20 | | | | | | |
| | | | .XXX ± 0.05 | | | | | | |
| | | | angles 0° ± 2° | | | | | | |
| | | | | dr WADE LIU 11/01/04 |  | scale N/A | A4 | 10045249 | sheet 2 of 2 |
| | | | engr WADE LIU 11/01/04 | | | | | | |
| | | | chr WADE LIU 11/01/04 | | | | | | |
| | | | opd STERLING LIN 11/02/04 | | | | | | |
| sheet index | revision sheet | | | | | | | | |