

## TM-254 Reversible Rotary Lock

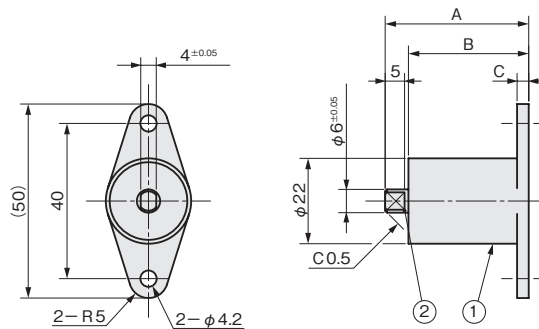


### Characteristic

It will be more safer to operate the cover by using it with rotary damper.

### Application

Simple stoppers for doors/Lids and drawers



### Specification

| Model No.        | A  | B | C | Lock Torque<br>N·m (kgf·cm)   | Drag Torque<br>N·m (kgf·cm) | Durability  | Permissible<br>Temp. Range | Quantity |
|------------------|----|---|---|-------------------------------|-----------------------------|-------------|----------------------------|----------|
| TM-254-2-LR (24) | 18 | 3 |   | 0.19 $\pm$ 0.04 (2 $\pm$ 0.4) | 0.01 (0.1) Below            | Over 10,000 | 0°C ~ +50°C                | 7470     |
| TM-254-5-LR (37) | 31 | 5 |   | 0.49 $\pm$ 0.10 (5 $\pm$ 1)   | 0.02 (0.15) Below           |             |                            | 7471     |

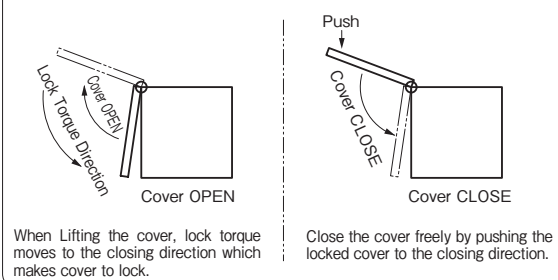
### Parts List

| No. | Part Name | Material | Finish | Quantity |
|-----|-----------|----------|--------|----------|
| 1   | Housing   | POM      | Black  | 1        |
| 2   | Shaft     | SUS420F  | —      | 1        |

### [ Naming Rule of Damper Series ]

TM - 254 - 2 - LR : Symbol for both directions  
Torque ——— Torque direction

### Arch Reversible Rotary Lock



## TM-255 Rotary Damper



### Characteristic

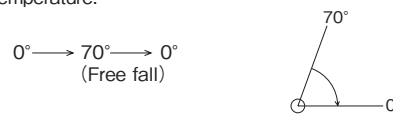
Newly developed compact body and high torque damper. It is small but strong.  
It is a damper in which torque changes with lid weight moment to make the lid fall.

### Application

Copy machines / Notebook type PCs / Word processors / Writing tables / Aircrafts / Storing rack covers for vehicles, etc

### Specification

Maximum rotational speed: 50rpm  
Maximum operation cycle: 10cycle/min  
Durability: Continuous open-close operation at ordinary temperature.



### Note

1. Do not apply excess external force while the damper is rotating.
2. Do not rotate over the range of rotation.
3. Please apply bearing to the shaft since damper itself does not have bearing function.

### Specification

| Model No.    | Rated Torque<br>N·m (kgf·cm) | Durability  | Permissible<br>Temp. Range | Quantity |
|--------------|------------------------------|-------------|----------------------------|----------|
| TM-255-20-RR | 1.96 (20) MAX                | Over 50,000 | 0°C ~ +40°C                | 7472     |
| TM-255-20-LL |                              |             |                            | 7473     |

### Parts List

| No. | Part Name   | Material | Finish | Quantity |
|-----|-------------|----------|--------|----------|
| 1   | Housing     | POM      | —      | 1        |
| 2   | Shaft       | PPS      | —      | 1        |
| 3   | Silicon Oil | —        | —      | —        |

### [ Naming Rule of Damper Series ]

TM - 255 - 20 - RR : Clockwise  
- LL : Counterclockwise  
Torque ——— Torque direction

