

PART NUMBER	ITEM ① BODY	ITEM ② SPRING	ITEM ③ SOLDER LUG	ITEM ④ NUT
108-0750-001	BRASS NICKEL PL .0001 MIN	NICKEL SILVER NICKEL PL .0001 MIN	COPPER TIN PL .0004 MIN	BRASS NICKEL PL .0001 MIN

DRAWING NO.  
B - 108-0750-001

0	REVISIONS
---	-----------

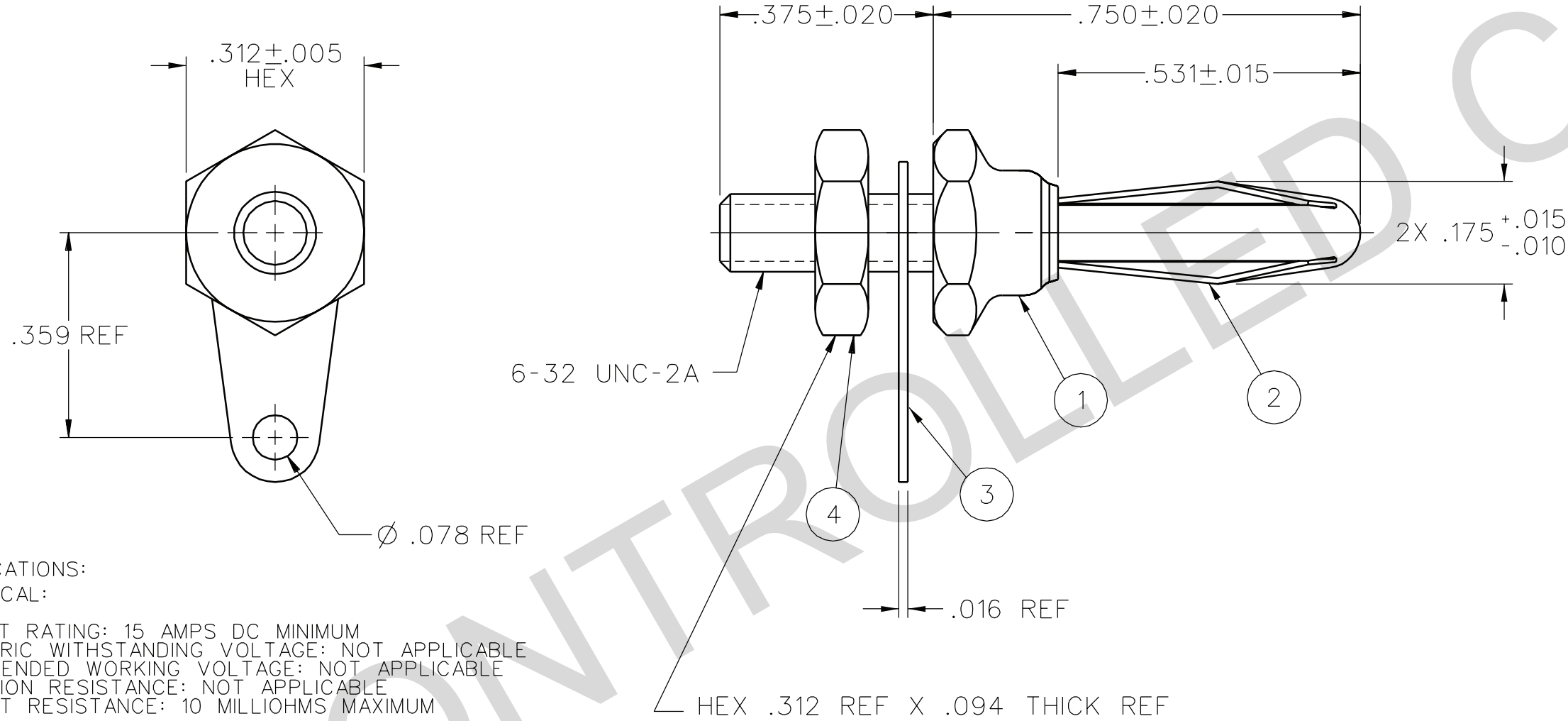
ENGINEERING RELEASE

```
*****
* REVISION NUMBER FOLLOWED BY AN ALPHA *
* CHARACTER INDICATES DRAWING CLARIFI- *
* CATION OR PART NUMBER ADDITION ONLY. *
*****
```

64a	1-19-95	R H	S W C	T A K	R J B		ECN 42927
-----	---------	--------	-------------	-------------	-------------	--	-----------

REVISION UPDATE

65	1-27-09	P A T	R J B	C S M	M J H	B L E	1-30-09 ECN 51752
----	---------	-------------	-------------	-------------	-------------	-------------	----------------------



NOTES:

1. SPECIFICATIONS:  
ELECTRICAL:

CURRENT RATING: 15 AMPS DC MINIMUM  
DIELECTRIC WITHSTANDING VOLTAGE: NOT APPLICABLE  
RECOMMENDED WORKING VOLTAGE: NOT APPLICABLE  
INSULATION RESISTANCE: NOT APPLICABLE  
CONTACT RESISTANCE: 10 MILLIOHMS MAXIMUM

MECHANICAL:

INSERTION/WITHDRAWAL FORCE: 1.0 - 12.0 POUNDS  
CONTACT SPRING RETENTION FORCE: 25 POUNDS MINIMUM  
WIRE ACCEPTABILITY: NOT APPLICABLE  
WIRE ATTACHMENT: NOT APPLICABLE  
MATING BANANA JACK DIAMETER: .166 NOMINAL  
DURABILITY: 1000 CYCLES MINIMUM

ENVIRONMENTAL:


(MEETS OR EXCEEDS THE APPLICABLE PARAGRAPH OF MIL-C-28901)  
 OPERATING TEMPERATURE: -55 DEG C TO 85 DEG C.  
 TEMPERATURE RISE AT RATED CURRENT: 10 DEG C MAXIMUM  
 CORROSION: MIL-STD-1344, METHOD 1001, CONDITION B  
 SHOCK: MIL-STD-1344, METHOD 2004, CONDITION G  
 VIBRATION: MIL-STD-1344, METHOD 2005, CONDITION I  
 HUMIDITY: MIL-STD-1344, METHOD 1002, CONDITION B

## CUSTOMER DRAWING

THIS DRAWING TO BE INTERPRETED  
PER ASME Y 14.5M - 1994

" $\mu$  STATION"

COMPANY CONFIDENTIAL

TOLERANCE UNLESS OTHERWISE SPECIFIED		DRAWN BY SWC		DATE 7-12-94		<div><b>Connectivity Solutions</b> P.O. Box 1732 Waseca, MN 56093 1-800-247-8256</div>	
DECIMALS .XX		mm		CHECKED BY TAK		DATE 3-1-95	
.XXX				APPROVED BY RJB		DATE 3-2-95	
MATL				RELEASE DATE		3-2-95	
FINISH		U/M		INCH		SCALE 4:1	
						TITLE ASSEMBLY, BANANA PLUG, UNINSULATED, HEX BODY, THREADED STUD, SOLDER LUG	
				SHEET 2 OF 2		DRAWING NO. B-108-0750-001	