



Withdrawn Products

The following products presented in this data sheet are being withdrawn:

B39181B4944Z810

Date of withdrawal: 19-MAY-04

Deadline for last orders: 30-SEP-04

Last shipments: 31-DEC-04

For further information please contact your nearest EPCOS sales office, which will also support you in selecting a suitable substitute. The addresses of the sales offices are given on the Internet at www.epcos.com/sales.



SAW Components

Data Sheet B4944

Data Sheet

A large, stylized, 3D-rendered graphic of the EPCOS logo. The letters "EPCOS" are in a bold, sans-serif font, appearing to be part of a larger, curved structure that resembles a stylized globe or a series of overlapping planes. The graphic is rendered in shades of gray and white, with a glowing effect around the letters.



SAW Components

B4944

Low-Loss Filter for Mobile Communication

181,80 MHz

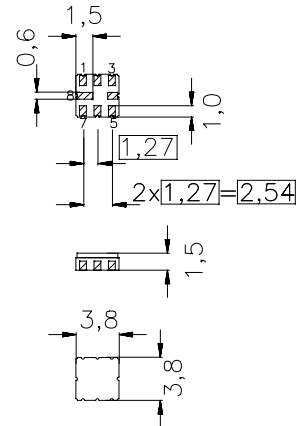
Data Sheet



Features

- Low-loss IF filter for mobile telephone TDMA systems, transmit path
- Low amplitude ripple
- Usable passbands 30 kHz
- Balanced to balanced operation
- Impedance transformation from 100 Ω to 200 Ω
- Ceramic package for **Surface Mounted Technology (SMT)**

Ceramic package **QCC8B**



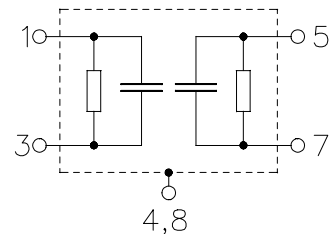
Terminals

- Ni, gold-plated

Dimensions in mm, approx. weight 0,07 g

Pin configuration

- | | |
|------|-----------------|
| 1, 3 | Balanced Input |
| 5, 7 | Balanced Output |
| 2, 6 | To be grounded |
| 4, 8 | Case ground |



Type	Ordering code	Marking and Package according to	Packing according to
B4944	B39181-B4944-Z810	C61157-A7-A46	F61074-V8037-Z000

Electrostatic Sensitive Device (ESD)

Maximum ratings

Operable temperature range	T	- 30 / + 85	$^{\circ}\text{C}$	source impedance 50 Ω
Storage temperature range	T_{stg}	- 40 / + 85	$^{\circ}\text{C}$	
DC voltage	V_{DC}	3	V	
Source power	P_{IN}	0	dBm	



SAW Components

B4944

Low-Loss Filter for Mobile Communication

181,80 MHz

Data Sheet



Characteristics (with matching inductor)

Operating temperature range: $T = -30$ to $+85^{\circ}\text{C}$
 Terminating source impedance: $Z_S = 100\ \Omega$
 Terminating load impedance: $Z_L = 200\ \Omega \parallel 330\ \text{nH}$

		min.	typ.	max.	
Center frequency	f_c	—	181,44	—	MHz
Maximum insertion attenuation	α_{\max}	—	1,6	2,0	dB
	181,785... 181,815 MHz				
Amplitude ripple (p-p)	$\Delta\alpha$	—	0,1	0,2	dB
	181,785... 181,815 MHz				
Attenuation	α				
	50,0 ... 164,0 MHz	37,0	45,0	—	dB
	198,0 ... 201,0 MHz	25,0	30,0	—	dB
	201,0 ... 320,0 MHz	37,0	45,0	—	dB
	360,0 ... 550,0 MHz	30,0	50,0	—	dB
	1570,0 ... 1580,0 MHz	30,0	34,0	—	dB
	1700,0 ... 2400,0 MHz	30,0	34,0	—	dB
	1800,0 ... 1818,0 MHz	33,0	36,0	—	dB
	4000,0 ... 4400,0 MHz	15,0	20,0	—	dB



SAW Components

B4944

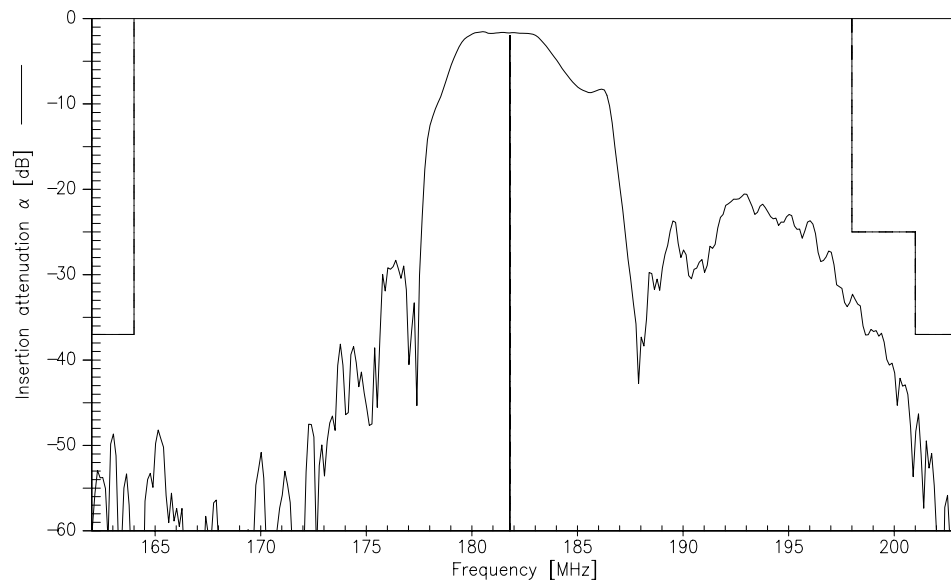
Low-Loss Filter for Mobile Communication

181,80 MHz

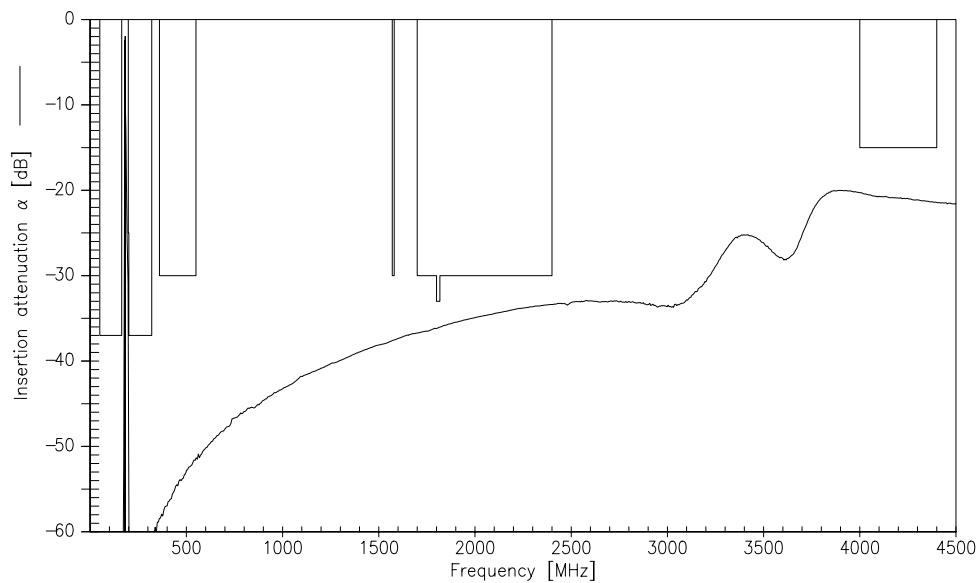
Data Sheet



Transfer function (narrowband):



Transfer function (wideband):





SAW Components

B4944

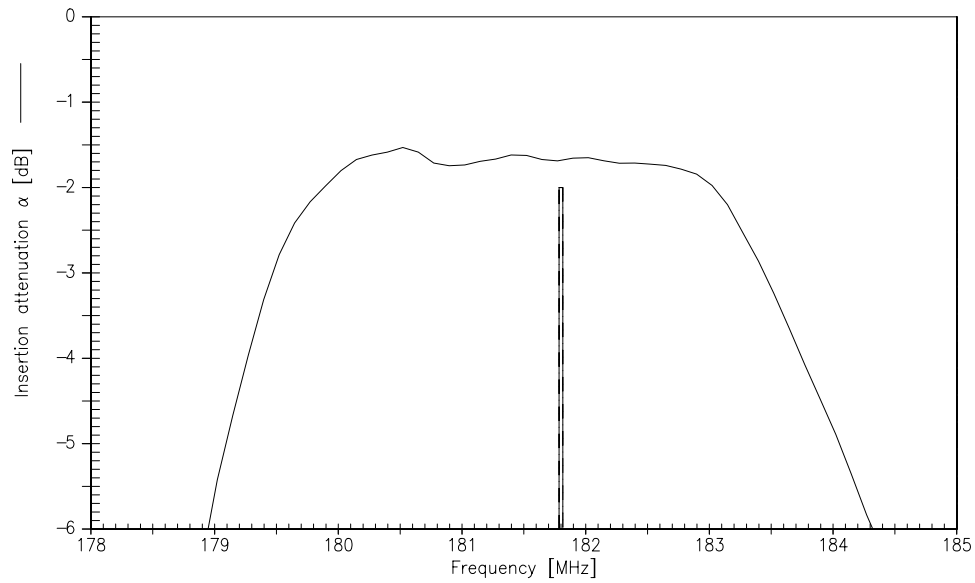
Low-Loss Filter for Mobile Communication

181,80 MHz

Data Sheet



Transfer function (passband, scale +0,27 MHz) :





SAW Components	B4944
Low-Loss Filter for Mobile Communication	181,80 MHz
Data Sheet	SMD

Published by EPCOS AG

Surface Acoustic Wave Components Division, SAW MC WT

P.O. Box 80 17 09, D-81617 München

© EPCOS AG 2002. All Rights Reserved. Reproduction, publication and dissemination of this brochure and the information contained therein without EPCOS' prior express consent is prohibited.

The information contained in this brochure describes the type of component and shall not be considered as guaranteed characteristics. Purchase orders are subject to the General Conditions for the Supply of Products and Services of the Electrical and Electronics Industry recommended by the ZVEI (German Electrical and Electronic Manufacturers' Association), unless otherwise agreed.

This brochure replaces the previous edition.

For questions on technology, prices and delivery please contact the Sales Offices of EPCOS AG or the international Representatives.

Due to technical requirements components may contain dangerous substances. For information on the type in question please also contact one of our Sales Offices.