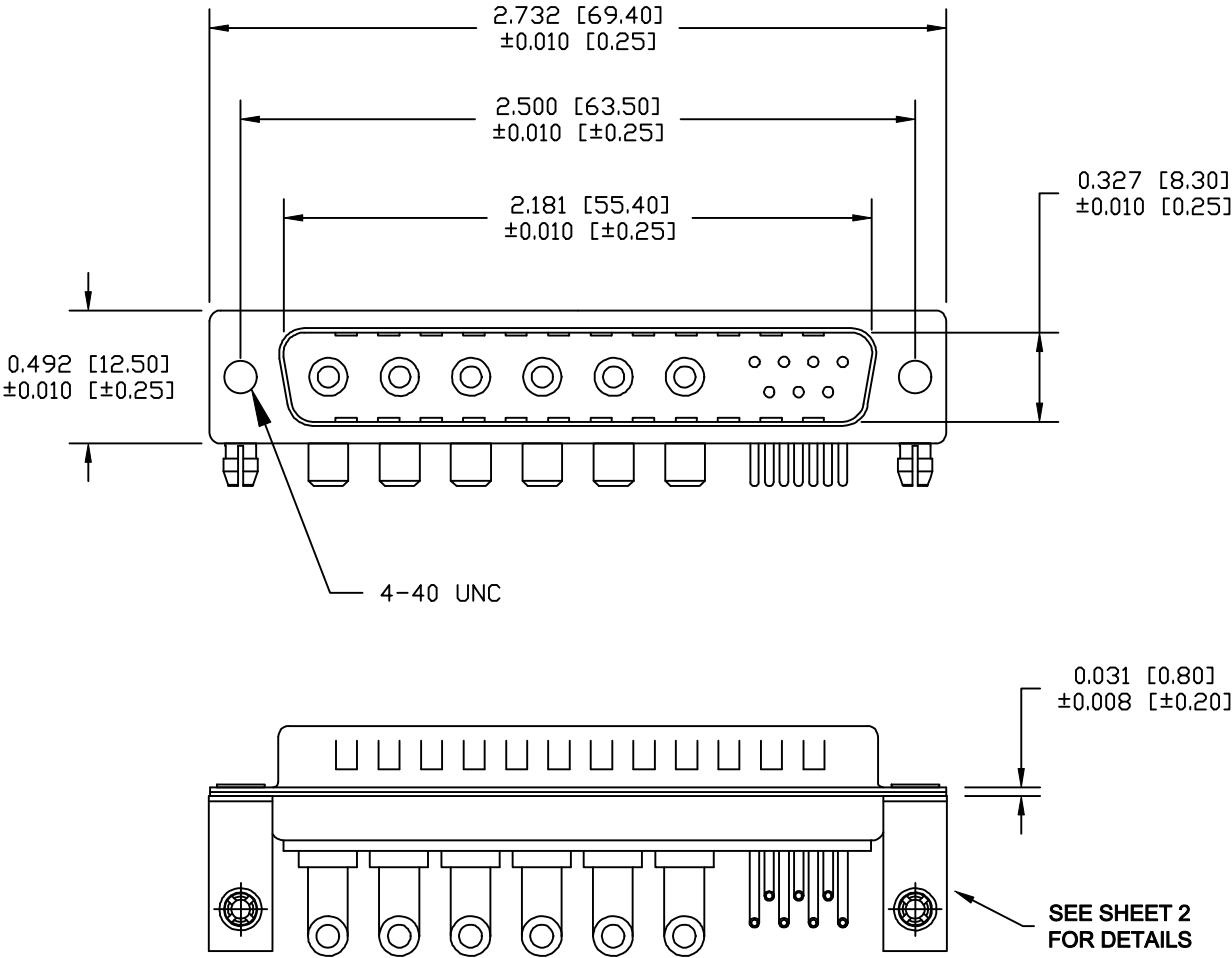


DESCRIPTION: POWER / SIGNAL - RIGHT ANGLE - MALE - MACHINED



SPECIFICATIONS:

ELECTRICAL:	
INSULATOR RESISTANCE:	5 G OHMS Min.
DIELECTRIC WITHSTANDING:	1,000VAC r.m.s.
OPERATING TEMPERATURE:	-55° C ~ +125° C
POWER CONTACT RESISTANCE:	1.0 Milliohms Max.
SIGNAL CONTACT RESISTANCE:	2.7 Milliohms Max.
POWER PINS:	40 AMPS
SIGNAL PINS:	5 AMPS
MECHANICAL:	
CONTACT INSERTION FORCE:	4.5 Kg Max.
CONTACT SEPARATOR FORCE:	0.3Kg Min.
MATERIALS:	
CONTACTS:	COPPER ALLOY
INSULATOR:	PBT THERMOPLASTIC, 30% GLASS FILLED, UL94V-0 RATED, BLACK 230°C PROCESS TEMP.
SHELL:	STEEL
BOARD LOCK:	BRASS, NICKEL PLATED
CINCHNUT:	BRASS, NICKEL PLATED
BRACKET:	STEEL, NICKEL PLATED
FINISH:	
SHELL:	NICKEL
CONTACTS:	FULL GOLD FLASH

684M13W6103L461

46 = 4-40 INSERTS / BOARD LOCKS

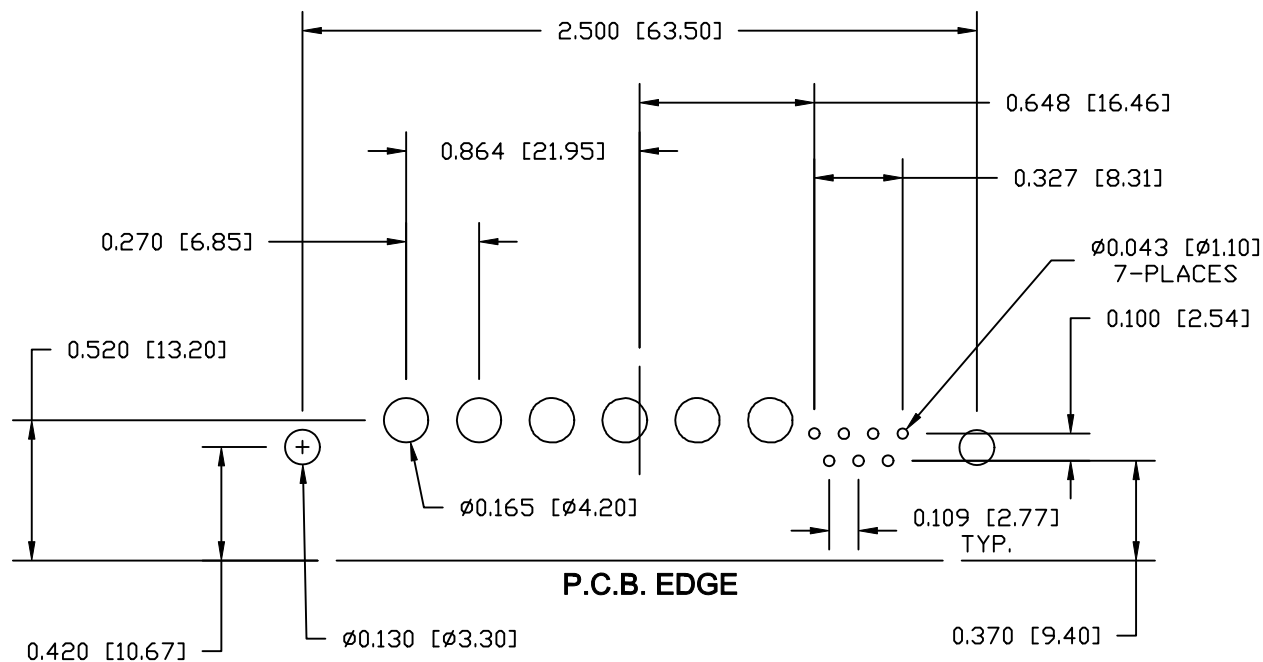
RoHS COMPLIANT

THESE DRAWINGS AND SPECIFICATIONS ARE THE PROPERTY OF NorComp AND SHALL NOT BE REPRODUCED, COPIED OR USED AS THE BASIS FOR THE MANUFACTURE OR SALE OF APPARATUS WITHOUT WRITTEN PERMISSION.

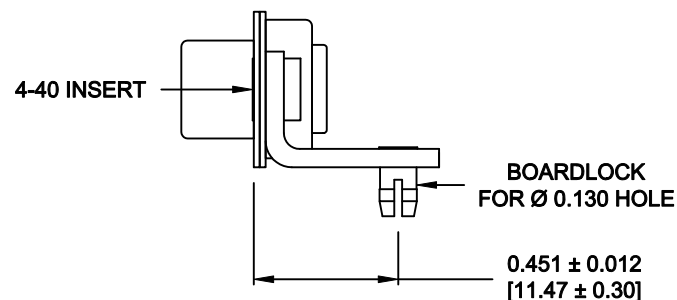
DRAWN: M. SIGMON		DATE: 09-05-12	
CHECKED:		DATE:	
SCALE: 1.5 = 1	SHEET 1	OF 2	REV 3
DWG NO. 684M13W6103L461			

NorComp

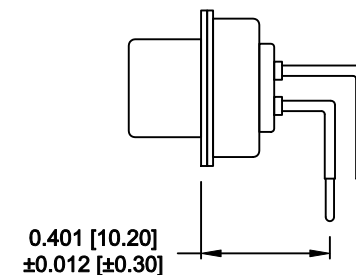
**NOTE:
POWER CONTACTS COME
PRE-LOADED INTO INSULATORS**



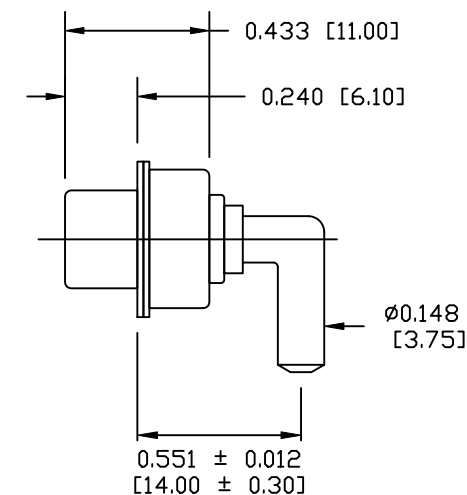
PCB LAYOUT



MOUNTING HARDWARE




SIGNAL CONTACTS



40 AMP POWER CONTACT

RoHS COMPLIANT

	THESE DRAWINGS AND SPECIFICATIONS ARE THE PROPERTY OF NorComp AND SHALL NOT BE REPRODUCED, COPIED OR USED AS THE BASIS FOR THE MANUFACTURE OR SALE OF APPARATUS WITHOUT WRITTEN PERMISSION.	DRAWN:		DATE:		
		M. SIGMON		09-05-12		
<h1>NorComp</h1>		CHECKED:		DATE:		
		SCALE:		SHEET OF		REV
		1.5 = 1		2 2		3
		DWG NO. 684M13W6103L461				

Mouser Electronics

Authorized Distributor

Click to View Pricing, Inventory, Delivery & Lifecycle Information:

[NorComp:](#)

[684M13W6103L461](#)