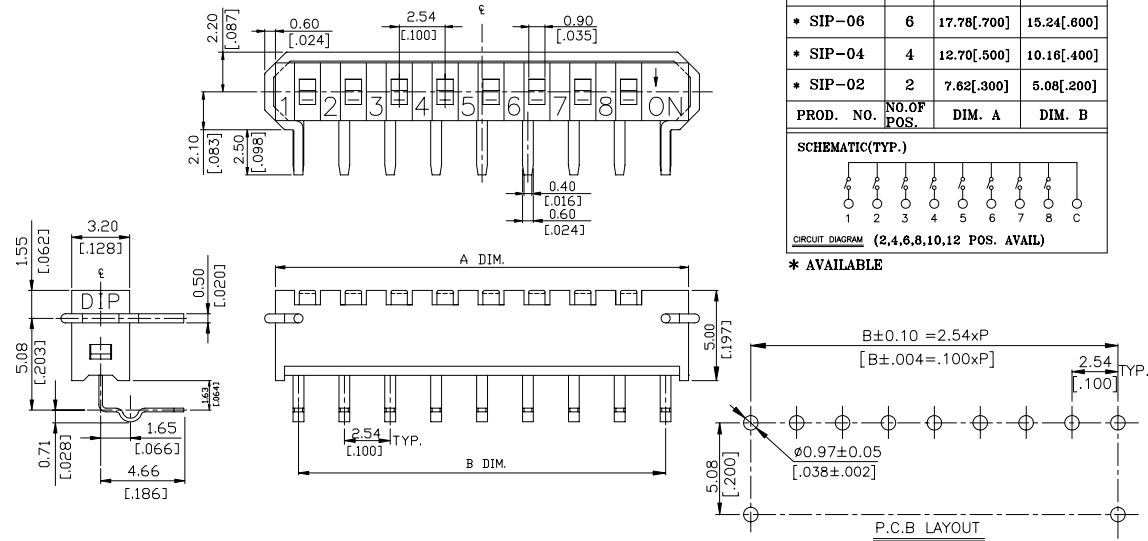


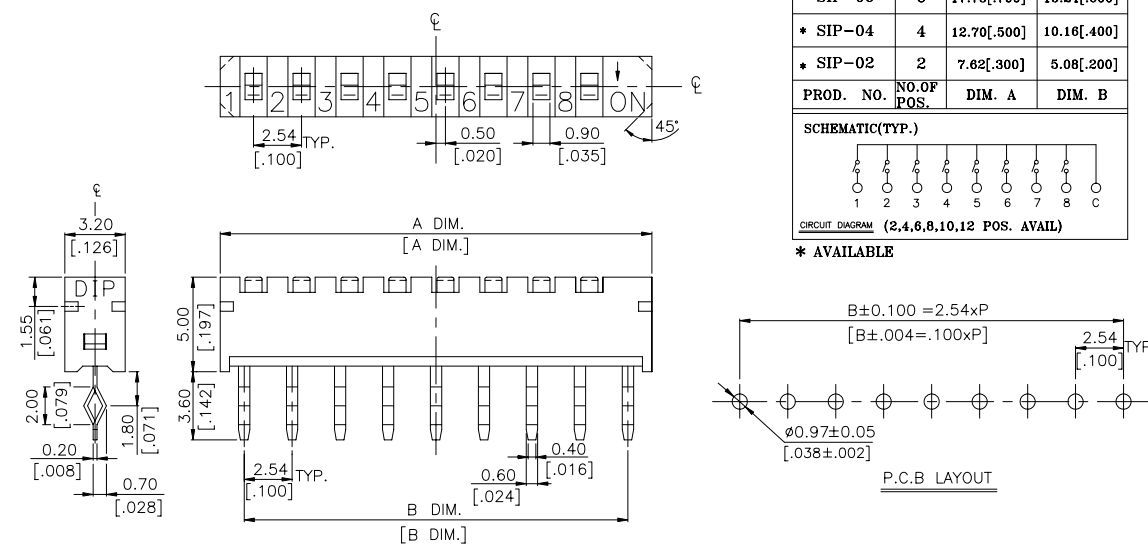
SIP SERIES

DIMENSIONS

SIP-A



SIP-T



HOW TO ORDER

SIP -

Package Style :
= Tube

Soldering :
V = Lead Free

Terminal Style :
T = Straight
A = Right Angle

Number Of Positions :
02 = 2 Positions
04 = 4 Positions
06 = 6 Positions
08 = 8 Positions
10 = 10 Positions

SPECIFICATION

MECHANICAL
Mechanical Life: 500 cycles
Operation Force: 800gf
Operation Temperature: -30 to +80
Storage Temperature: -30 to +80

ELECTRICAL
Electrical Life: 500 cycles
Non-Switching Rating: 100mA, 50VDC
Switching Rating: 10mA, 5VDC
Contact Resistance: (at current 100mA).
 (a) 100mΩ max. at initial
 (b) 200mΩ max. after life test
Insulation Resistance: 100MΩ min. 500VDC
Dielectric Strength: 300VAC / 1 minute
Circuit: SPST

MATERIALS

COVER: UL 94V-0 Nylon High-Temp Thermoplastic
Color: Black
BASE: UL 94V-0 PBT or Nylon High-Temp Thermoplastic, **Color:** Black
ACTUATOR: UL94V-0 Nylon Thermoplastic
Color: White
CONTACT PLATING: Gold plating over nickel
TERMINAL: Tin plated.
CONTACT: Alloy copper C5210-EH
TERMINAL: Brass C2680-H

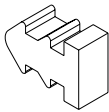
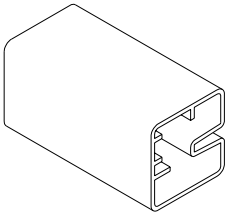
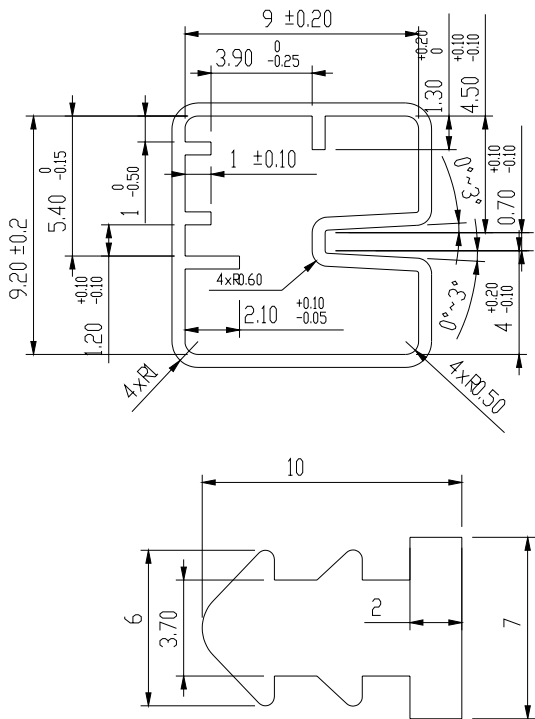
SOLDERING PROCESS

Keep all switches contacts in their “OFF” position for all operations.

WAVE SOLDERING: Recommended solder temperature at 500 (260)max. 5 seconds.

HAND SOLDERING: Use a soldering iron of 30 watts, controlled at 350 approximately 5 seconds.

PACKING



Part Number	No. Of Positions	Number Per Tube
SIP-10A	10	16
SIP-08A	8	20
SIP-06A	6	25
SIP-04A	4	35
SIP-02A	2	55
SIP-10T	10	17
SIP-08T	8	20
SIP-06T	6	27
SIP-04T	4	37
SIP-02T	2	64