

19" Rack cases

APPLICATIONS

19" rack cases are designed to offer a simple solution to many 19" mounting applications, notably for those involving audio and radio equipment. The design allows numerous combinations to be assembled according to the application and hence offers total flexibility for the design engineer, using common piece parts. It also allows the case to be presented in a number of attractive finishes for individual product tailoring.

Features

- Conforms to IEC 297-1, DIN 41494
- Simple design for total access
- Three depth variations
- Three height variations
- Numerous configurations for total flexibility
- Slide mounting facility

Contents of kit

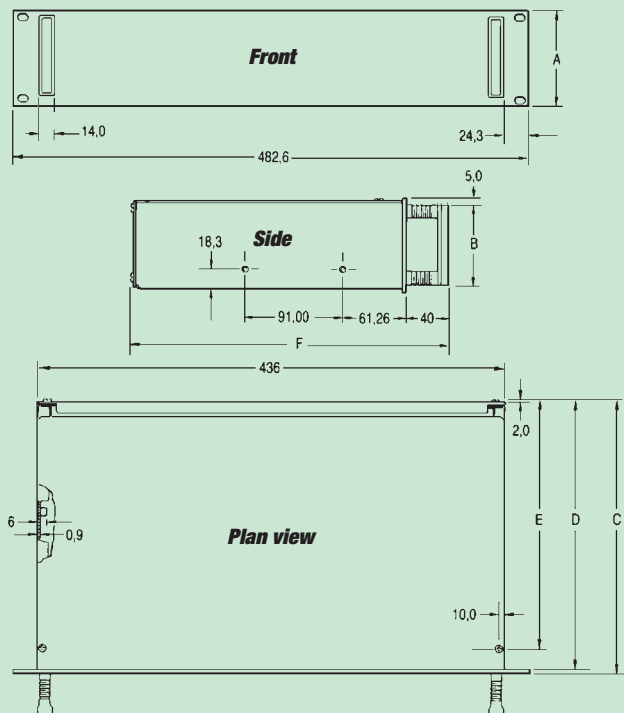
| Item/Description | Material/Finish |
|------------------|---|
| Top and base | 0.9mm RAL 7035 painted steel |
| Front panels | 3mm anodised aluminium (black or clear) or painted steel 1.6mm RAL 7035 |
| Rear panels | 1.2mm RAL 7035 painted steel |
| Handles | ABS RAL 7035 or black and clear/black anodised aluminium extrusion. |

SLIDE MOUNTING

Please use the following slides **98-43211G** or **98-43212C**

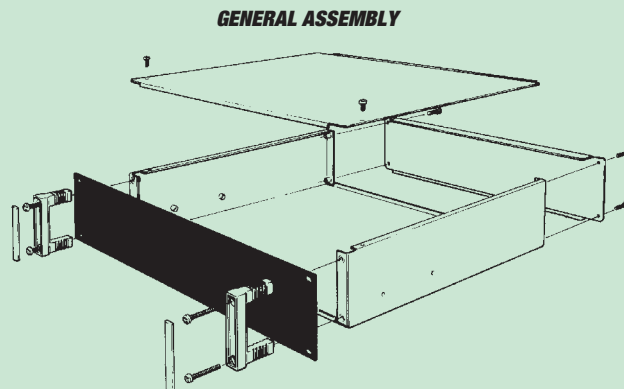


19" Rack cases



| Height of unit | A | B | Dept of unit | C | D* | E | F |
|----------------|--------|-------|--------------|-------|-------|-------|-------|
| 1U | 44,45 | 34,00 | 250 | 252,0 | 249,0 | 229,0 | 292,0 |
| 2U | 88,9 | 78,0 | 350 | 352,0 | 349,0 | 329,0 | 392,0 |
| 3U | 133,35 | 122,0 | 450 | 452,0 | 449,0 | 429,0 | 492,0 |

*Assuming 3mm F/panel thickness



19" Rack cases

HOW TO CONFIGURE THE RACK CASE

Since it is generally accepted that the case will consist of a top, base, front and rear, the following example illustrates how to select the configuration which best suits you.

THE TOP

This is available in 3 depths of 250mm, 350mm and 450mm in a ventilated and unventilated version and is simply attached to the case by means of two fasteners at the front.

HANDLES

These are available in 1U, 2U and 3U versions and can be either black or grey. They attach to the case using 4 fixing screws through the front panel fixing centres.

THE BASE

This is available in 3 depths of 250mm, 350mm and 450mm and three heights of 1U, 2U and 3U. It is also available in ventilated and unventilated versions. The base also has provision for the attachment of slides.

FRONT PANELS

These are available in anodised aluminium (black or clear) and are attached to the base by means of 4 screw fixings. There are 3 height variations of 1U, 2U and 3U and all will accept front panel handles.

Delivery: Please note that all units will be supplied assembled.

REAR PANELS

These are available in RAL 7035 painted steel and are attached to the base by 4 screw fixings. There are 3 height variations of 1U, 2U and 3U and all are removable.

19" RACK CASES PART SELECTOR CHART

Ordering information

| Front panels | 1U | 2U | 3U |
|----------------------|------------|------------|-------------|
| Painted steel (grey) | 503-232969 | 503-232972 | 503-232975 |
| Black anodise | 503-232970 | 503-232973 | 503-232976C |
| Clear anodise | 503-232971 | 503-232974 | 503-232977 |

| Rear panels | 1U | 2U | 3U |
|------------------------|------------|------------|------------|
| RAL 7035 painted steel | 503-232984 | 503-232985 | 503-232986 |

| Top covers | 250mm | 350mm | 450mm |
|--------------|------------|------------|------------|
| Ventilated | 503-232963 | 503-232965 | 503-232967 |
| Unventilated | 503-232964 | 503-232966 | 503-232968 |

| Base 1U | 250mm | 350mm | 450mm |
|--------------|-------------|------------|------------|
| Ventilated | 503-232945 | 503-232951 | 503-232957 |
| Unventilated | 503-232946A | 503-232952 | 503-232958 |

| Base 2U | 250mm | 350mm | 450mm |
|--------------|------------|------------|------------|
| Ventilated | 503-232947 | 503-232953 | 503-232959 |
| Unventilated | 503-232948 | 503-232954 | 503-232960 |

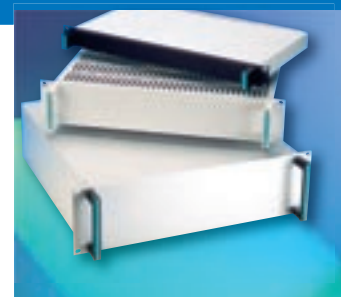
| Base 3U | 250mm | 350mm | 450mm |
|--------------|------------|------------|------------|
| Ventilated | 503-232949 | 503-232955 | 503-232961 |
| Unventilated | 503-232950 | 503-232956 | 503-232962 |

| Handles | 1U | 2U | 3U |
|---------|------------|------------|------------|
| Black | 503-232978 | 503-232980 | 503-232982 |
| Grey | 503-232979 | 503-232981 | 503-232983 |

Note: Care should be taken with 1U and 2U 450mm deep versions not to excessively weight load the unit without the use of additional chassis supports.



The top



Handles



The base



Front panels



Rear panels

CONFIGURATED PART NUMBERS:

So that specific permutations can be provided, it is now possible to configure exact requirements using the chart below. Each digit of the order code represents an available option for example, part number 519-110111 represents a 1U rack case, 250mm deep with a plain top cover and base, clear anodised front panel and grey handles. Configured units will be supplied assembled.

RACK CASE CODE GENERATOR

