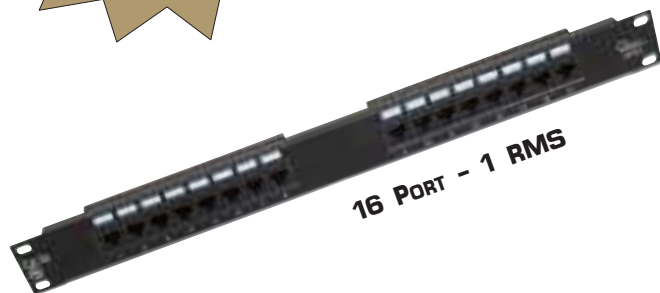


**Lifetime  
Warranty**

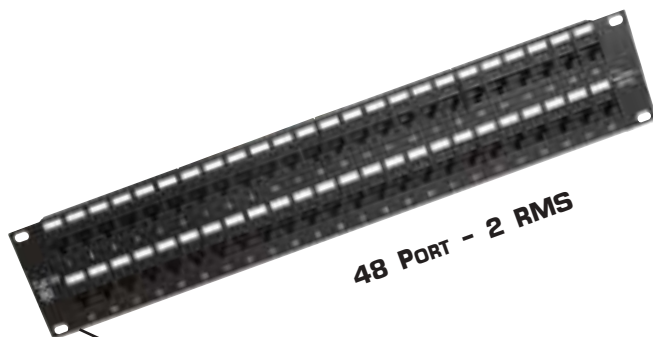
**Category  
5e**



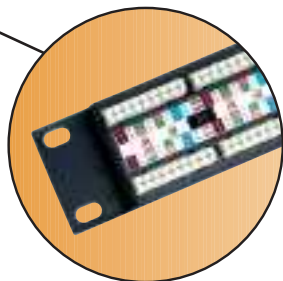
**16 PORT - 1 RMS**



**24 PORT - 1 RMS**



**48 PORT - 2 RMS**



**Universal 568A & 568B  
Wiring with Color-coded Labels**



QUEST's Category 5e series patch panels provide several options for cross-connect solutions. They are Category 5e compliant, which meet or exceed TIA/EIA 568-A specifications and are offered in 16, 24 and 48 port configurations for 19" horizontal rack-mount installation. In addition, a 12-port "mini" vertical wall-mount panel is offered for small office cross connect applications. The panels are universally configured for both 568A and 568B wiring standards with easy to read, color-coded labels indicating the proper wiring scheme, and are designed with double folded frames offering outstanding resistance to twisting. The PC boards are protected with a terminal housing cover to protect them from damage when using a punch down tool. Termination is with 110 blocks, which accept 22-24 AWG cable.

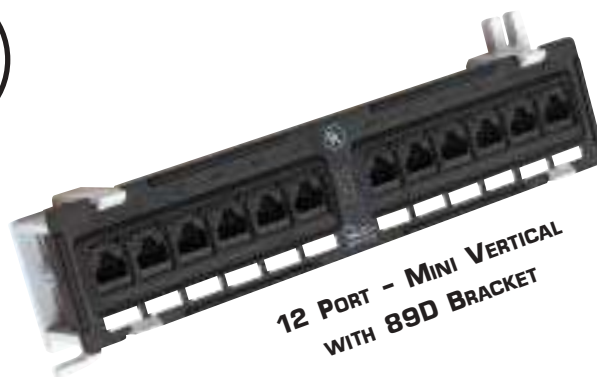
## FEATURES:

- 50u" GOLD PLATED CONTACTS
- DOUBLE FOLDED FRAMES
- 568A AND 568B UNIVERSAL WIRING
- PROTECTIVE PC BOARD COVERS
- UL LISTED

## ITEM #

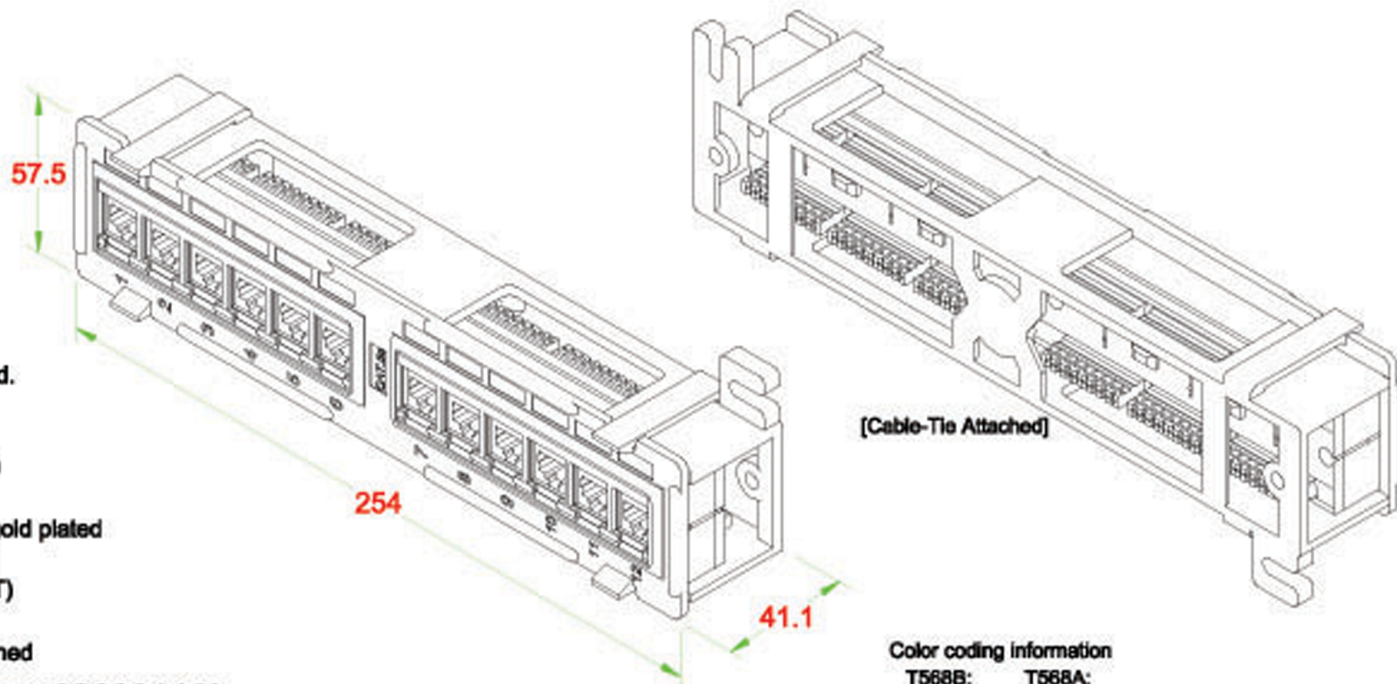
## DESCRIPTION

NPP-1012	12 PORT CAT5e MINI PATCH PANEL, WITH BRACKET
NPP-1016	16 PORT CAT5e 19" PATCH PANEL
NPP-1024	24 PORT CAT5e 19" PATCH PANEL
NPP-1048	48 PORT CAT5e 19" PATCH PANEL



**12 PORT - MINI VERTICAL  
WITH 89D BRACKET**

# Cat.5e 12Port Mini Patch Panel (UTP) / 110 Type



## Performance:

Meets Cat.5e EIA/TIA 568B.1 Standard.

## Materials:

Plastic Body : Fireproof ABS UL-94V0

RJ-45 Jack : Housing-PBT /  
8P8C 50 micro inches gold plated

PCB : FR-4 / 1.6mm UL-94V0

IDC Body : Fireproof PCT (PC+PBT)

IDC Cap : PC

IDC Pin : Phosphor Bronze & Tinned

Label Color Code : T568 A/B [Arrange : 8 7 6 3 2 1 4 5]

IDC Description : For 22-26 AWG.

For 110 punch-down Tool

[Cable-Tie Attached]

## Color coding information

T568B:	T568A:
1—WH/OR	1—WH/GN
2—OR	2—GN
3—WH/GN	3—WH/OR
4—BL	4—BL
5—WH/BL	5—WH/BL
6—GN	6—OR
7—WH/BR	7—WH/BR
8—BR	8—BR

## Electrical Specifications:

Insulation Resistance : 500M ohms (min.)

Contact Resistance : 20m ohms (max.)

Current Rating : 1.5 Amps .

DC Resistance : 0.1 ohm (max.)

Withstanding Voltage : 1000 VAC RMS @ 60Hz / 1 min.

## Mechanical Specifications:

IDC Punch Down Cycle : Over 25 Cycles (min.)

RJ-45 Jack Insertion Cycle : Over 2000 Cycles (min.)

Operation Temperature : -40 ~ +70 degree / C



IDC CAP

**NPP-1012**

