

Parallel Style Wide Opening Air Gripper

Series **MHL2**

Size: 10, 16, 20, 25, 32, 40

Features

- ➔ Easy to mount body and jaw accessories.
- ➔ A wide opening with large open/close stroke. Optimally used for holding large-size workpieces that have dimensional variances.
- ➔ The double pistons provide a large gripping force.
- ➔ Autoswitches can be added.

Specifications

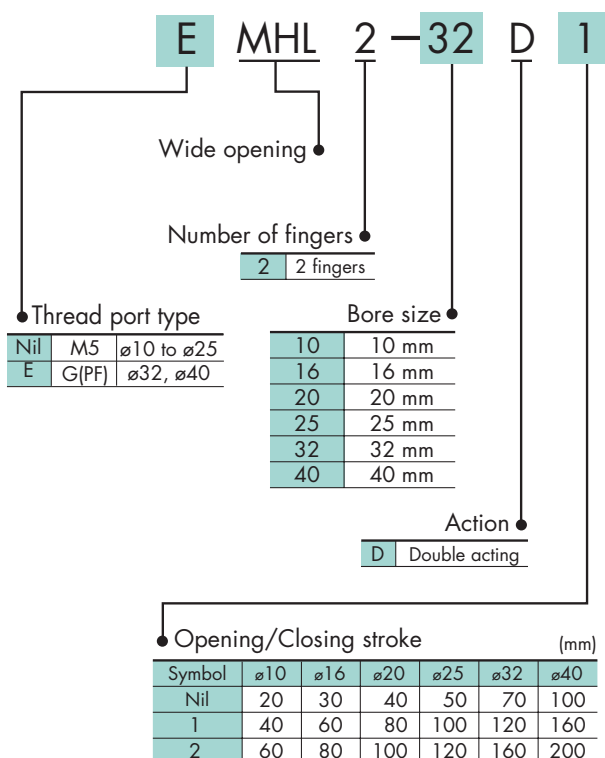
Bore size (mm)	10	16	20	25	32	40
Fluid	Air					
Action	Double acting					
Operating pressure (MPa)	0.15 to 0.6		0.1 to 0.6			
Ambient and fluid temperature	-10 to 60°C					
Repeatability	±0.1					
Lubrication	Not required					
Effective gripping force (N) at 0.5 MPa	14	45	74	131	228	396

Note) Gripping point = Bore size 10, 16, 20, 25: 40 mm,
Bore size 32, 40: 80 mm.

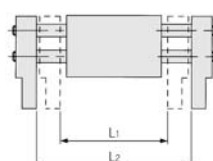
Model/Stroke

Model	Bore size (mm)	Max. operating frequency (c.p.m.)	Opening/Closing stroke (mm) L2 - L1	Width at closing (mm) L1	Width at opening (mm) L2	Weight (g)
MHL2-10D□	10	60	20	56	76	280
MHL2-10D1		40	40	78	118	345
MHL2-10D2			60	96	156	425
MHL2-16D□	16	60	30	68	98	585
MHL2-16D1		40	60	110	170	795
MHL2-16D2			80	130	210	935
MHL2-20D□	20	60	40	82	122	1025
MHL2-20D1		40	80	142	222	1495
MHL2-20D2			100	162	262	1690
MHL2-25D□	25	60	50	100	150	1690
MHL2-25D1		40	100	182	282	2560
MHL2-25D2			120	200	320	2775
MHL2-32D□	32	30	70	150	220	2905
MHL2-32D1		20	120	198	318	3820
MHL2-32D2			160	242	402	4655
MHL2-40D□	40	30	100	188	288	5270
MHL2-40D1		20	160	246	406	6830
MHL2-40D2			200	286	486	7905

How to Order



➔ Auto Switch Specifications
Refer to switch section.



Note) The open and close time spans represent the value when the exterior of the workpiece is being held.



CAD CD-ROM AVAILABLE

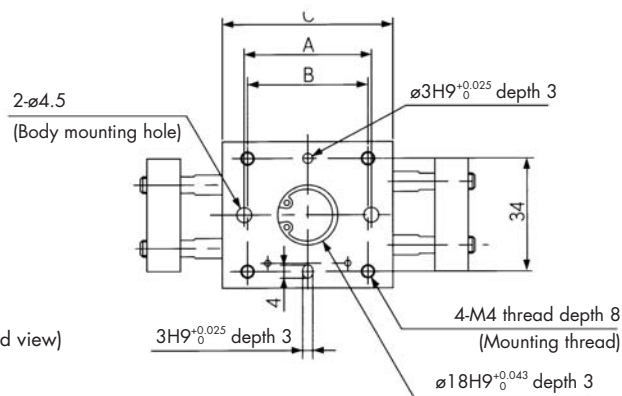
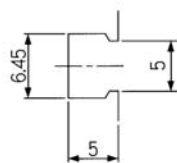
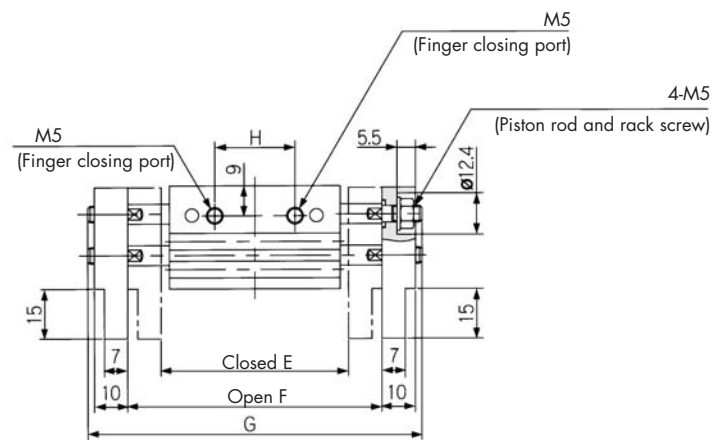


SEE BEST PNEUMATICS VOL.12

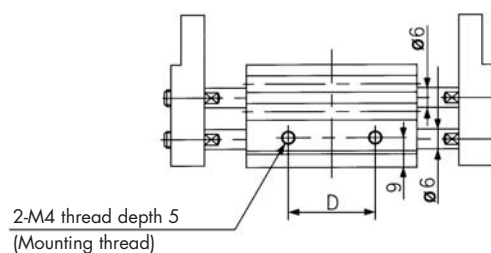


PDF AVAILABLE ONLINE

Grippers

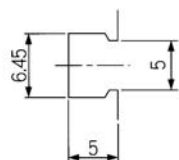
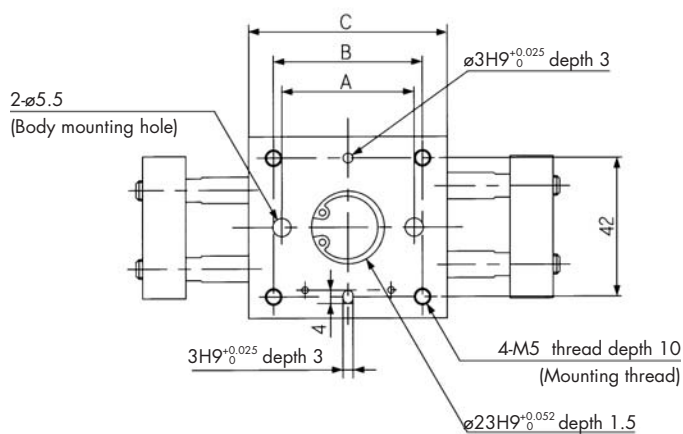
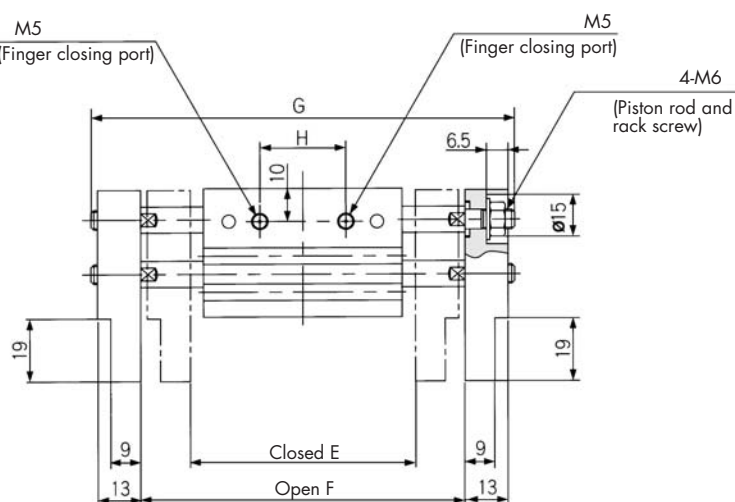
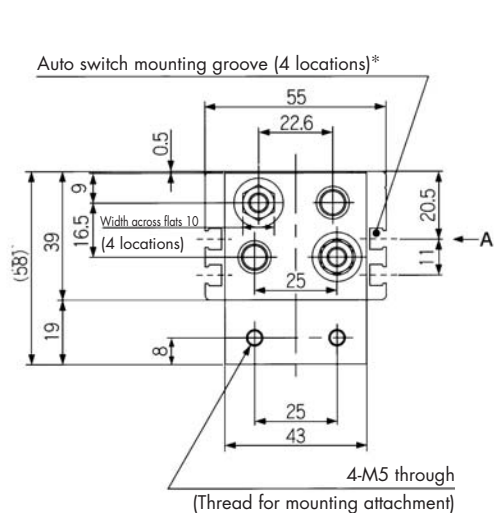


A cross view (Fingers closed)

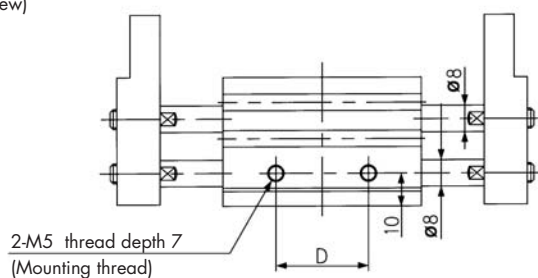
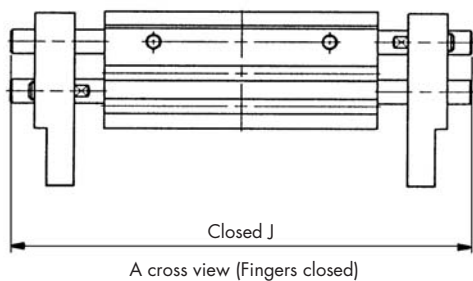


Note 1) J dimension is at fully closed.
Note 2) D1 is different from D2 at finger closed because shaft is ejected from finger end. J dimension is different from the value which is subtracted stroke from G dimension.

Dimensions: MHL2-16D□



* Dimensions of auto switch mounting groove (Enlarged view)

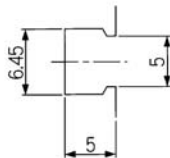


	(mm)								
Model	A	B	C	D	E	F	G	H	J
MHL2-16D	40	45	60	28	68	98	128	26	98
MHL2-16D1	70	75	90	58	110	170	200	50	152
MHL2-16D2	90	95	110	78	130	210	240	70	192

Note 1) J dimension is at fully closed.

Note 2) D1 is different from D2 at finger closed because shaft is ejected from finger end. J dimension is different from the value which is subtracted stroke from G dimension.

Grippers



2-M6 thread depth 7
(Mounting thread)

11

$\varnothing 10$

$\varnothing 10$

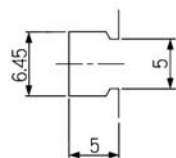
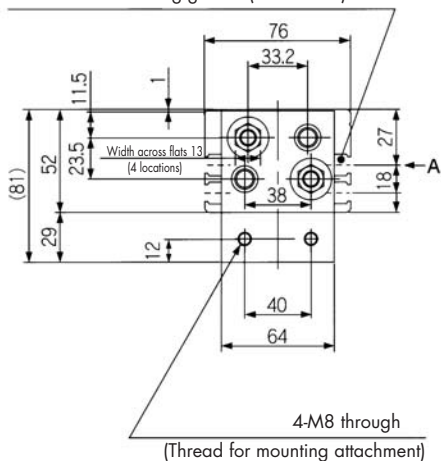
D



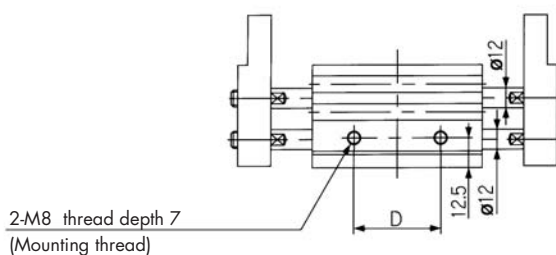
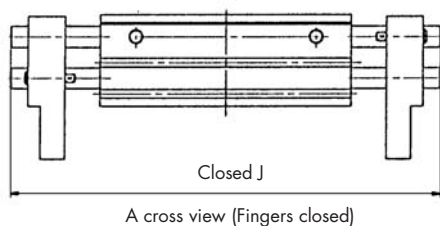
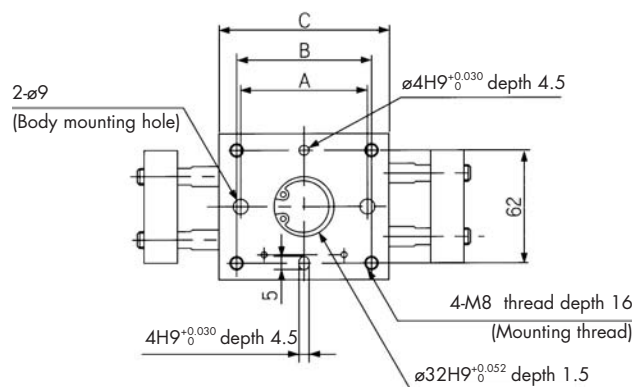
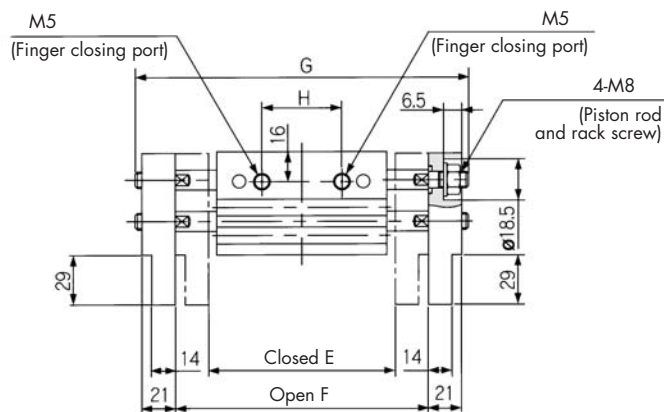
Note 2) D1 is different from D2 at finger closed because shaft is ejected from finger end. J dimension is different from the value which is subtracted stroke from G dimension.

Dimensions: MHL2-25D□

Auto switch mounting groove (4 locations)*



* Dimensions of auto switch mounting groove (Enlarged view)

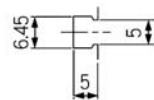
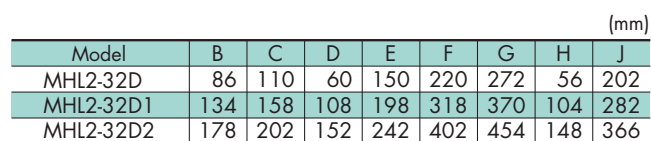
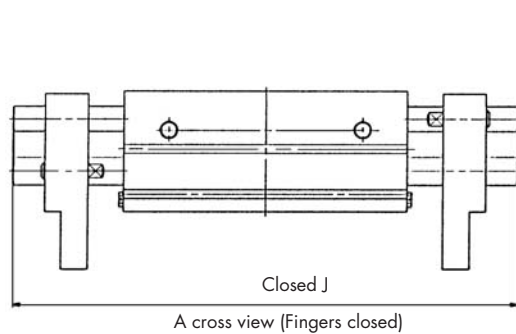


(mm)

Model	A	B	C	D	E	F	G	H	J
MHL2-25D	66	70	88	48	100	150	196	38	146
MHL2-25D1	120	124	142	102	182	282	328	86	244
MHL2-25D2	138	142	160	120	200	320	366	104	282

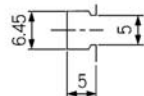
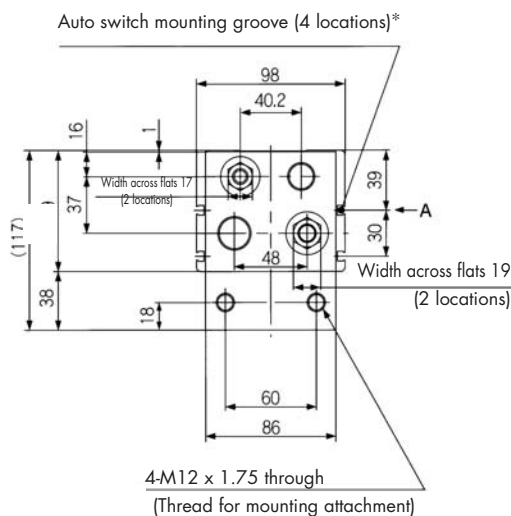
Note 1) J dimension is at fully closed.
 Note 2) D1 is different from D2 at finger closed because shaft is ejected from finger end. J dimension is different from the value which is subtracted stroke from G dimension.

Grippers

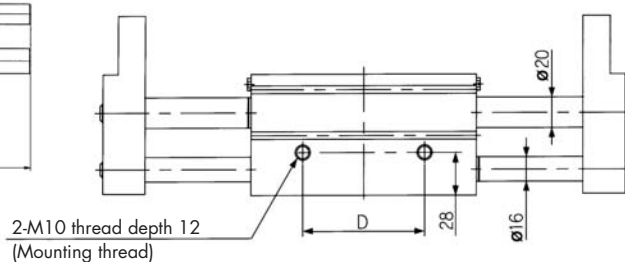
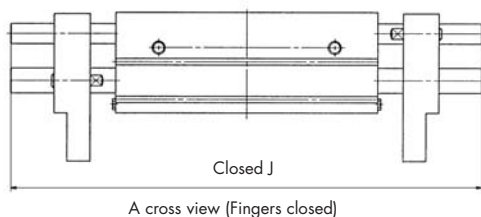
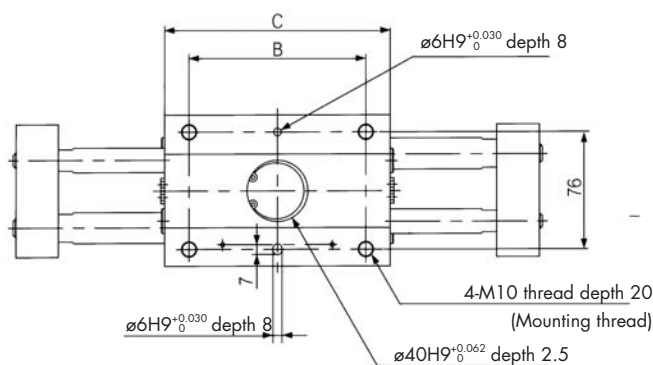
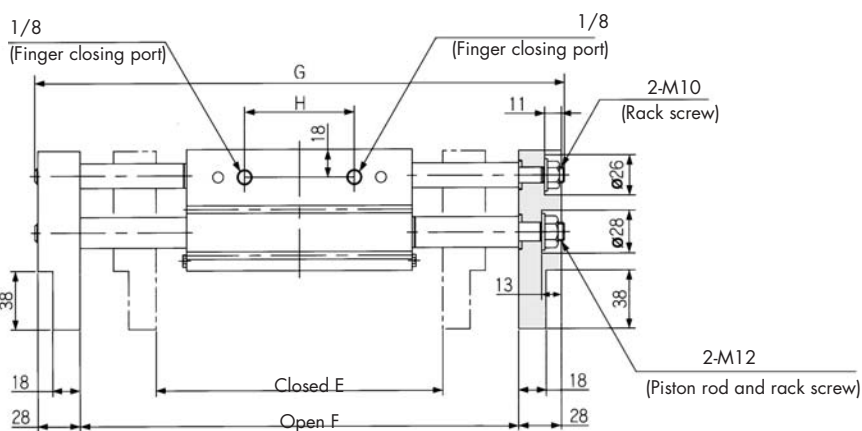
[illegible]

Note 2) D1 is different from D2 at finger closed because shaft is ejected from finger end. J dimension is different from the value which is subtracted stroke from G dimension.

Dimensions: MHL2-40D□



* Dimensions of auto switch mounting groove
(Enlarged view)



(mm)

Model	B	C	D	E	F	G	H	J
MHL2-40D	116	148	80	188	288	348	72	252
MHL2-40D1	174	206	138	246	406	466	130	336
MHL2-40D2	214	246	178	286	486	546	170	450



Note 1) J dimension is at fully closed.

Note 2) D1 is different from D2 at finger closed because shaft is ejected from finger end. J dimension is different from the value which is subtracted stroke from G dimension.