

4

3

2

1

THIS DRAWING IS UNPUBLISHED.

RELEASED FOR PUBLICATION

© COPYRIGHT

ALL RIGHTS RESERVED.

LOC

DIST


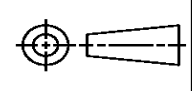
REVISIONS

P	LTR	DESCRIPTION	DATE	DWN	APVD
	B1	ECR-14-002924	28FEB2014	GK	HMR

REPLACED BY OCEAN STYLE APPLICATOR PART
NUMBER 2151877-1

FOR REPLACEMENT PARTS FOR APPLICATOR 1528290
REFER TO ADDITIONAL PAGE(S). SPARE PARTS KIT (IF LISTED)
WILL REMAIN AVAILABLE.

THE REPLACEMENT OCEAN STYLE APPLICATOR HAS THE
SAME TERMINATOR/PRESS INTERFACE AS APPLICATOR
1528290

THIS DRAWING IS A CONTROLLED DOCUMENT.		DWN	GOPALAKRISHNA HV		 TE Connectivity	
DIMENSIONS:		CHK	RAGHAVENDRA			
		APVD	RAGHAVENDRA		NAME FINE ADJ SIDE FD HD-I APPL	
		PRODUCT SPEC				
		APPLICATION SPEC				
MATERIAL		WEIGHT	SIZE	CAGE CODE	DRAWING NO	RESTRICTED TO
			A3		©- 1528290	
FINISH		CUSTOMER DRAWING		SCALE	SHEET 1 OF 2	REV B1

THIS DRAWING IS UNPUBLISHED. RELEASED FOR PUBLICATION
(C) COPYRIGHT BY TYCO ELECTRONICS CORPORATION. ALL INTERNATIONAL RIGHTS RESERVED.

PART NUMBER	REV	FIRST USED	TERMINATOR	FEED TYPE	DESCRIPTION
1528290-1	B	-	LEADMAKER	MECH POST FEED	CUTS CARRIER
1528290-2	B	-	BENCH	MECH PRE FEED	CUTS CARRIER
1528290-6	B	-	LEADMAKER	MECH POST FEED	CONTINUOUS CARRIER
7-1528290-1	B	-	LEADMAKER	MECH POST FEED	-1 AND SPARE PARTS
7-1528290-2	B	-	BENCH	MECH PRE FEED	-2 AND SPARE PARTS
7-1528290-6	B	-	LEADMAKER	MECH POST FEED	-6 AND SPARE PARTS
7-1528290-7	A	-	-	-	SPARE PARTS KIT

CRIMP DATA AMP TERMINAL AMP CRIMP SPECS			
TERMINAL NAME: ELO TERMINAL, SOCKET CONTACT.			
CRIMP	SIZE	TYPE	RANGE
WIRE	1.57 [.062 IN]	F	0.50mm ² - 0.75mm ²
INSUL	2.03 [.080 IN]	0	1.60-1.90 [.063-.075 IN]
WIRE STRIP LENGTH		APPL INSTRUCTION	
3.40-4.20 [.134-.165 IN]		408-8322 & 408-8490	
TERMINAL		FEED	
APPL SPEC 114-18433		6.00 [.236 IN]	

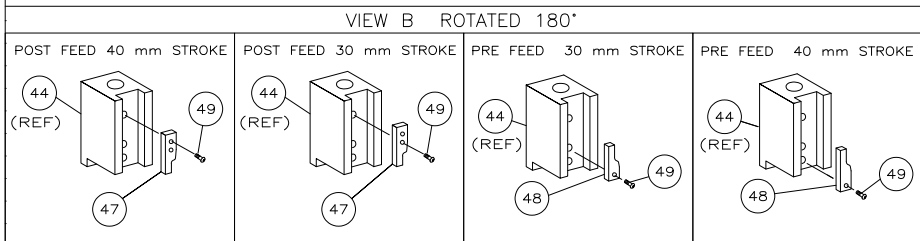
TERMINALS APPLIED				
1411561	-	-	-	-
1411567	-	-	-	-
1411551	-	-	-	-
1411553	-	-	-	-
1411575	-	-	-	-
-	-	-	-	-
-	-	-	-	-
-	-	-	-	-

WIRE SIZE mm ² AWG	CRIMP HEIGHT *	REF SETTING *
0.75mm ²	1.17 ±0.03 [.046 ±.001 IN]	C 7
0.60mm ²	1.11 ±0.03 [.044 ±.001 IN]	D 0
0.50mm ²	1.06 ±0.03 [.042 ±.001 IN]	D 3
-	-	-
-	-	-
-	-	-
-	-	-
-	-	-
-	-	-
-	-	-
-	-	-
-	-	-
-	-	-
-	-	-
-	-	-

SET UP GAGE
458637-3

LAYOUT
L1426362

1. RECOMMENDED SPARE PARTS.
2. GREASE RAM, CAM, CAM FOLLOWER AND FEED ROD LIGHTLY.
3. LUBRICATE DAILY PER THE APPLICATOR INSTRUCTION SHEET SUPPLIED WITH THE APPLICATOR.



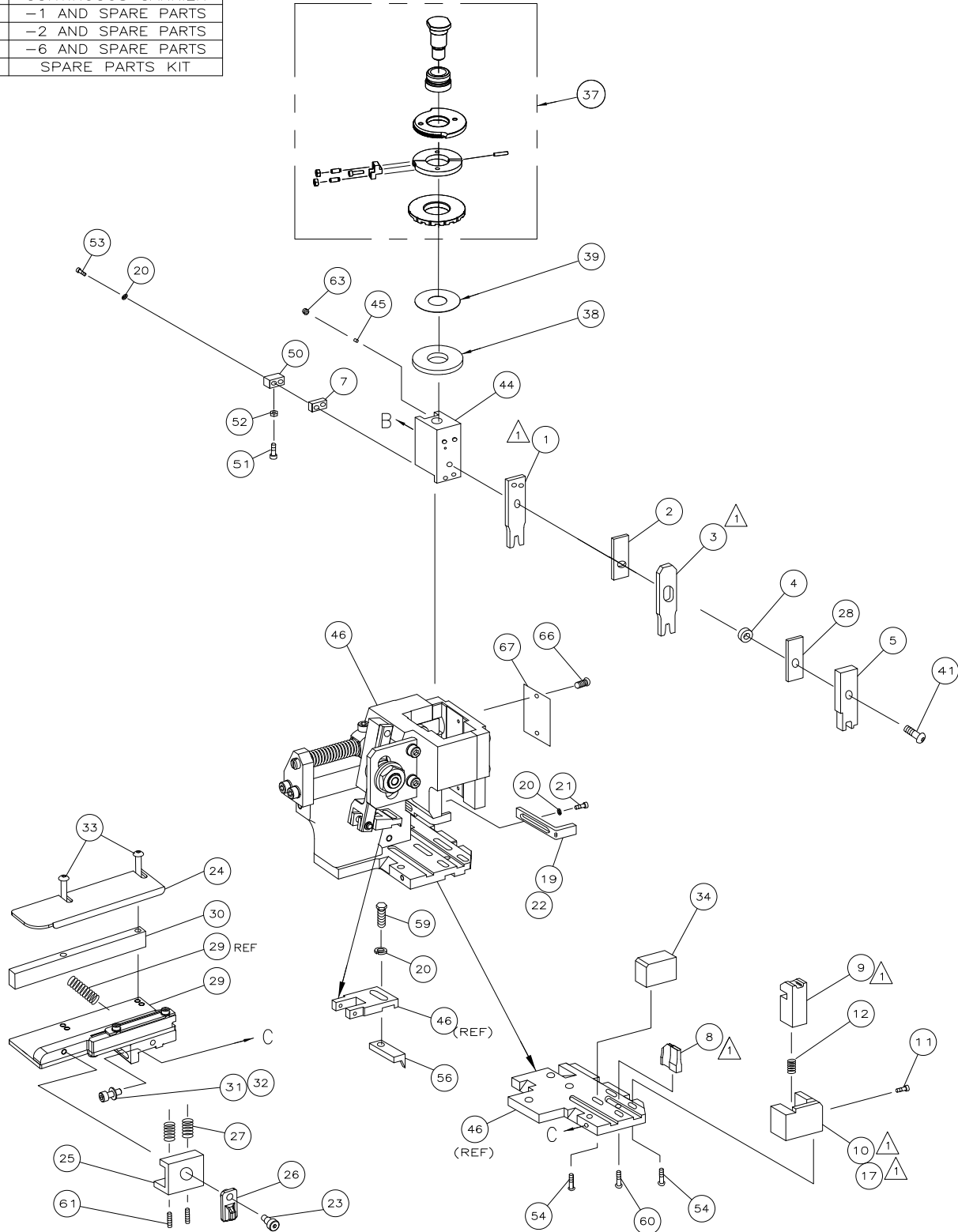
* WARNING:

ON INSTALLATION, SET WIRE DISC TO LARGEST WIRE SIZE SETTING. USE OF SETTINGS BELOW MIN REQUIRED CRIMP HEIGHT SETTING WILL CAUSE DAMAGE TO CRIMP TOOLING.



ITEM 34 LOCATION

8 REF 34 REF

0.035±.020



-	1	1	1	1	1	1	1528290	PRINT, APPLICATOR LOG SHEET	73
-	1	1	1	1	1	1	1338705-3	DOCUMENTATION PACKAGE	71
-	1	1	1	1	1	1	461264-5	PLATE, IDENTIFICATION	67
-	2	2	2	2	2	2	21017-2	SCR,DRIVE(#2x.19)ID PLATE	66
-	1	1	1	1	1	1	3-18031-0	SCR,SKT SET(M6X6)RAM	63
-	2	2	2	2	2	2	2-18032-5	SCR,SET(M5X20)DRAG	61
-	1	1	1	1	1	1	18024-7	SCR,BHC(M4X10)ANVIL	60
-	1	1	1	1	1	1	5-18022-2	SCR,HEX(M4X8)FEED FINGER	59
-	1	1	1	1	1	1	1338685-1	PAWL, FEED	57
-	4	4	4	4	4	4	18024-8	SCR,BHC(M4X12)SHEAR HOLDER	54
-	2	2	2	2	2	2	1-18023-3	SCR,SKT CAP(M4X16)HOLD DOWN	53
-	1	1	1	1	1	1	18030-1	NUT,HEX(M3)HOLD DOWN	52
-	1	1	1	1	1	1	811242-5	BUMPER, HOLDDOWN	51
-	1	1	1	1	1	1	690753-2	SPACER, TONKER	50
-	1	1	1	1	1	1	18024-3	SCR,BHC(M3X10)CAM	49
-	1	1	1	1	1	1	1338675-1	CAM, PRE FEED 30 & 40 mm ST	48
-	1	1	1	1	1	1	1338676-1	CAM, POST FEED 30 & 40 mm ST	47
-	1	1	1	1	1	1	1320999-3	APPLICATOR BASIC SUBASSY	46
-	1	1	1	1	1	1	690191-1	PLUG, NYLON	45
-	1	1	1	1	1	1	1338660-1	RAM	44
-	1	1	1	1	1	1	2-18024-6	SCR,BHC(M8X25)RAM	41
-	1	1	1	1	1	1	690125-1	SHIM SUBASSY	39
-	1	1	1	1	1	1	469367-9	SPACER, FINE ADJUST	38
-	1	1	1	1	1	1	879103-3	FINE ADJUST HEAD SUBASSY	37
-	1	1	1	1	1	1	1320934-3	SUPPORT, TERMINAL	34
-	2	2	2	2	2	2	1-18024-0	SCR,BHC(M4X20)STRIP GUIDE	33
-	1	1	1	1	1	1	18027-2	WASHER, FLAT(M4)	32
-	1	1	1	1	1	1	1-18023-2	SCR,SKT CAP(M4X12)MOUNT BLOCK	31
-	1	1	1	1	1	1	1320908-4	SPACER, STRIP GUIDE	30
-	1	1	1	1	1	1	1633073-1	STRIP GUIDE PLATE ASSY	29
-	1	1	1	1	1	1	1-455888-7	SPACER, FRONT SHEAR DEP	28
-	2	2	2	2	2	2	1-22284-0	SPRING, DRAG	27
-	1	1	1	1	1	1	356835-1	LEVER, DRAG RELEASE	26
-	1	1	1	1	1	1	240792-1	DRAG, TERMINAL	25
-	1	1	1	1	1	1	1320928-1	PLATE, STRIP GUIDE	24
-	1	1	1	1	1	1	980371-4	SCR,SHC SHLD	23
-	1	1	1	1	1	1	690472-2	STRIPPER	22
-	1	1	1	1	1	1	1-18023-1	SCR,SHC(M4X10)STRIPPER	21
-	4	4	4	4	4	4	18025-2	WASHER,LOCK(M4)STRIPPER	20
-	1	1	1	1	1	1	690472-1	STRIPPER	19
-	1	1	1	1	1	1	1338684-1	HOLDER, SHEAR, FRONT (NO-CUT)	17
-	1	1	1	1	1	1	3-22280-3	SPRING, SHEAR	12
-	1	1	1	1	1	1	356885-4	STOP, SHEAR	11
-	1	1	1	1	1	1	1320921-1	HOLDER, SHEAR, FRONT (CUT)	10
-	1	1	1	1	1	1	1-454276-9	SHEAR, FLOAT (FRONT)	9
-	1	1	1	1	1	1	3-1333202-9	ANVIL	8
-	1	1	1	1	1	1	4-240641-6	SPACER, DEPRESSOR (REAR)	7
-	1	1	1	1	1	1	1-455889-4	DEPRESSOR, SHEAR (FRONT)	5
-	1	1	1	1	1	1	238011-8	SPACER, BLOCK CRIMPER	4
-	1	1	1	1	1	1	8-655830-9	CRIMPER, INSULATION	3
-	1	1	1	1	1	1	455888-6	SPACER, CRIMPER	2
-	1	1	1	1	1	1	4-456403-4	CRIMPER, WIRE	1

-77				-76				-72				-71				-6				-2				-1				PART NO				DESCRIPTION				ITEM NO																							
QTY REQD PER ASSY																								PARTS LIST																																			
THIS DRAWING IS A CONTROLLED DOCUMENT.																								DIN CHK M. CLIFFORD				24NOV03								Tyco Electronics Corporation Harrisburg, PA 17105-3608																							
DIMENSIONS:								TOLERANCES UNLESS OTHERWISE SPECIFIED:																MPVD F. BACKHURST				24NOV03				NAME				FINE ADJ SIDE FD HD-I APPL																							
INCHES																								PRODUCT SPEC																																			
								±																																																			
								±																																																			
								±																																																			
								±																																																			
								±																																																			
MATERIAL								FINISH																WEIGHT				A1				00779				C=1528290				RESTRICTED TO																			
																								CUSTOMER DRAWING																																			
																																								SCALE				SHEET				1 of 1				REV				D			