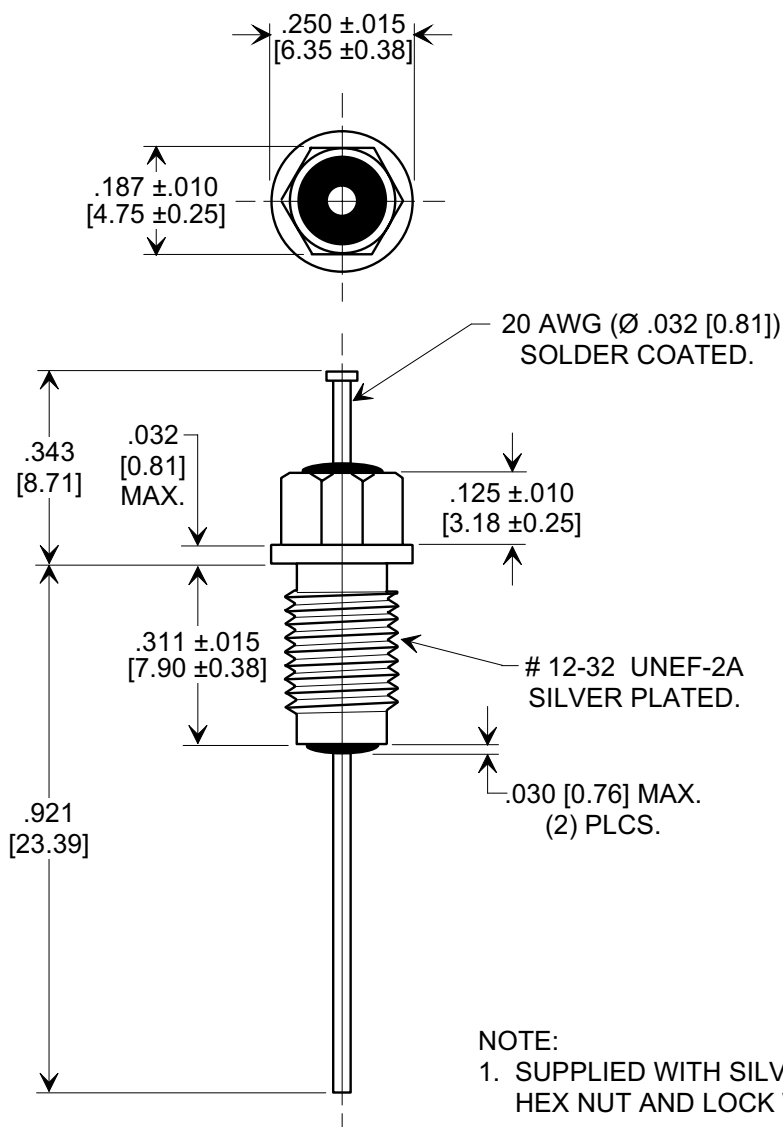
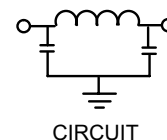
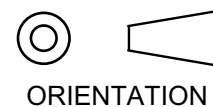




This drawing is the property of Tusonix, Inc., and may not be used, reproduced, published or disclosed to others without expressed authorization by Tusonix Inc.

**Electrical Testing**  
per Tusonix standard  
test plans and Mil-Std-202  
Test Methods.

**MARKETING SALES DRAWING**  
**DIMENSIONS IN INCHES - DO NOT SCALE THIS DRAWING**  
**DIMENSIONS IN METRIC - [ ]**



MIN. CAP. (pF)	WORKING VOLTAGE (VVdc)		CURRENT IDC	MINIMUM NO LOAD INSERTION LOSS (dB) AT 25°C PER MIL-STD -220			
	85°C	125 °C		50 MHz	100 MHz	1 GHz	10 GHz
5000	200	100	10 A	50	65	70	70

X-2015 Rev-0	REVISION RECORD	Original Release C.O. 20070814-6-01	0			TOLERANCES unless otherwise specified		Title	
						2 PLC. DECIMAL ± 		<b>M15733/61-0007 BUSHING STYLE EMI FILTER</b>	
						3 PLC. DECIMAL ± .031 [0.79]			
						ANGLES ± 			
						<b>TUSONIX</b> TUCSON, ARIZONA		Drawn S.M. 08-14-07	
						Approved T.C. 08-14-07			
						<b>A</b>		<b>4203-552</b>	

# Mouser Electronics

Authorized Distributor

Click to View Pricing, Inventory, Delivery & Lifecycle Information:

[Tusonix:](#)

[4203-552](#)