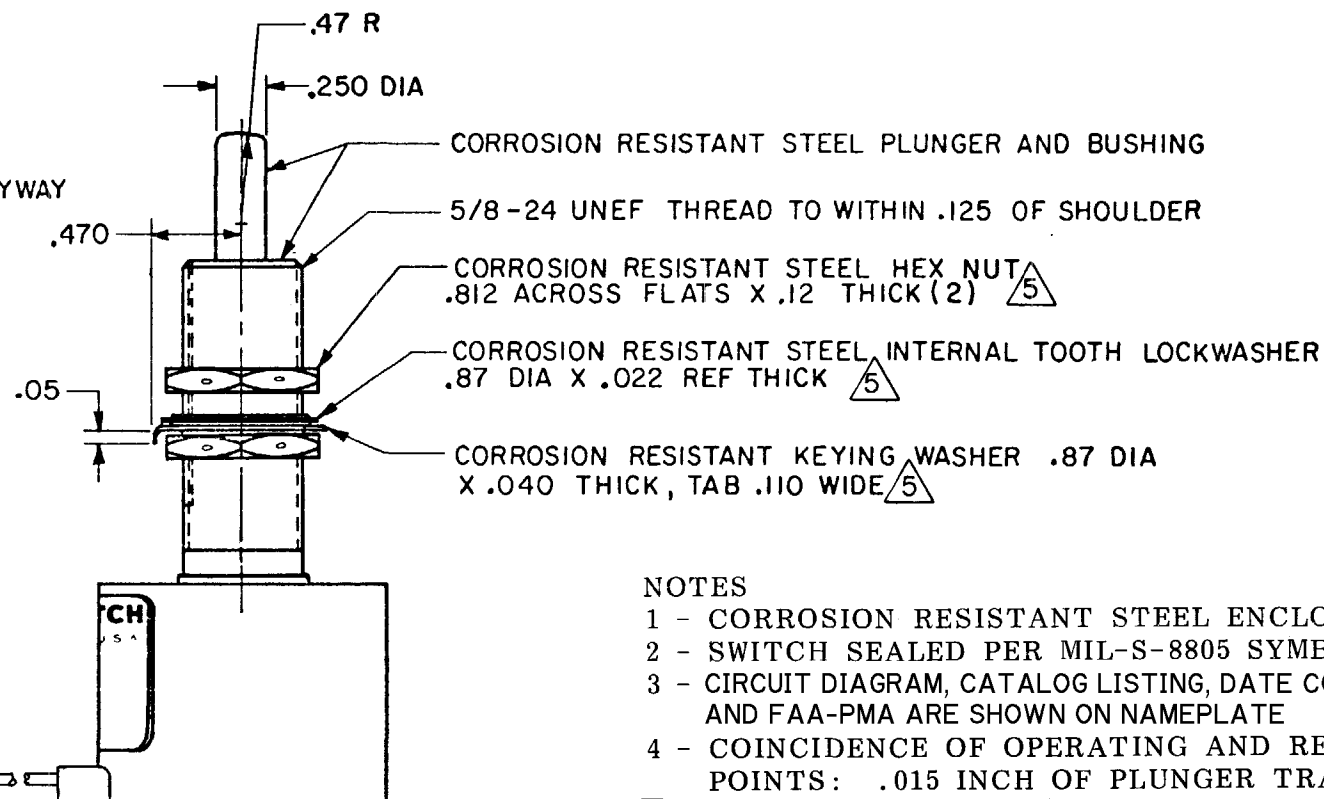
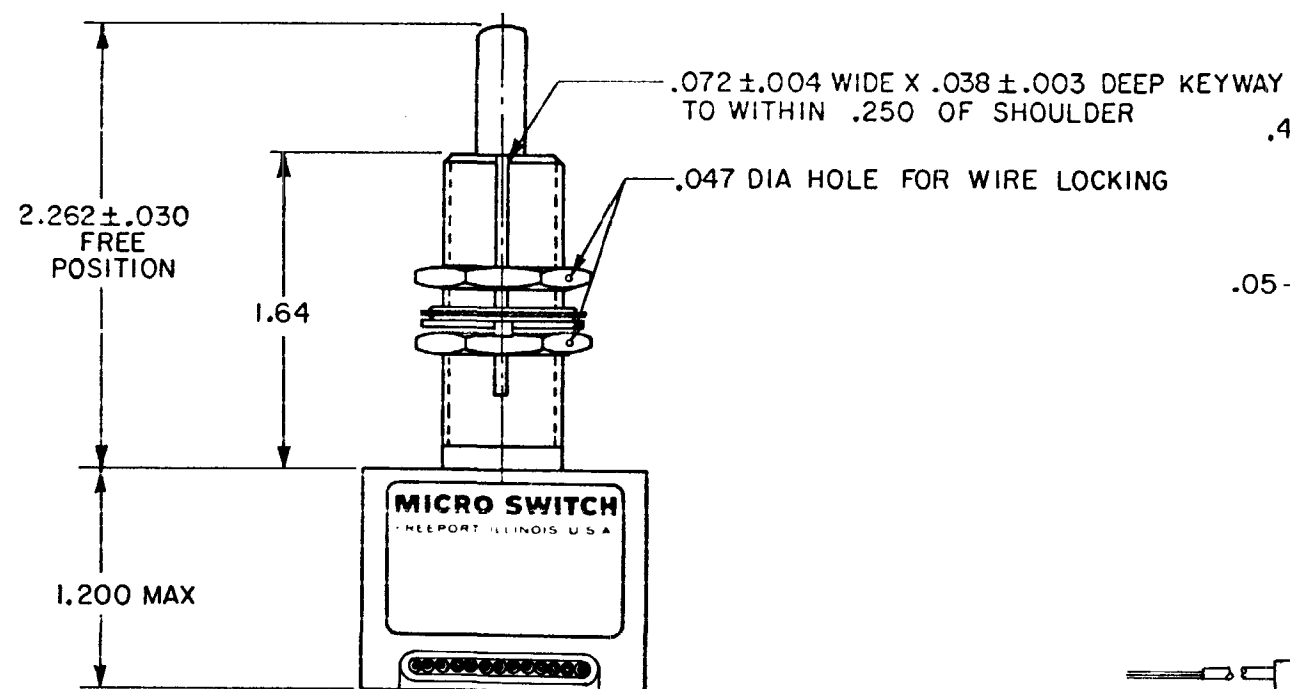
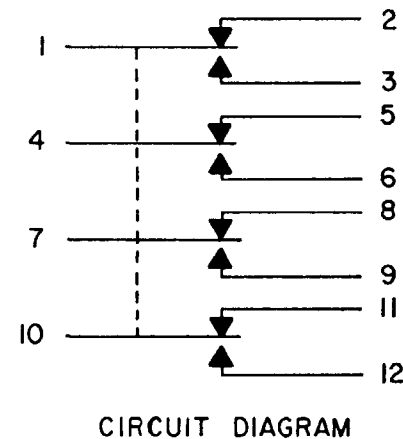
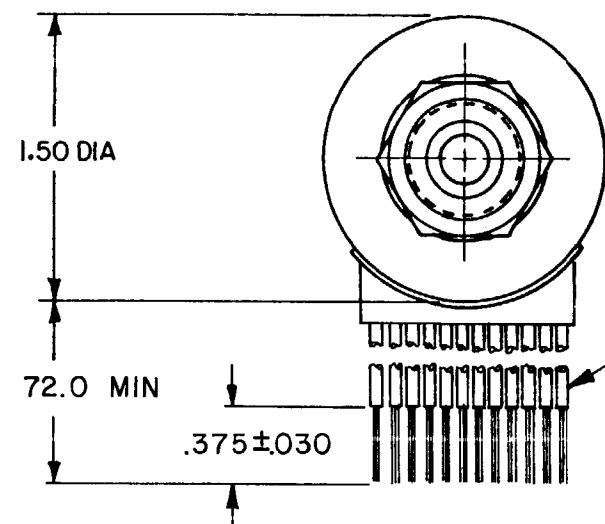


HONEYWELL  
PART NUMBER

6 FAA-PMA

5EN320-6

REV	DOCUMENT	CHANGED BY	CHECK
5	0011614	KSR 04MAR05	AK



## NOTES

- 1 - CORROSION RESISTANT STEEL ENCLOSURE
- 2 - SWITCH SEALED PER MIL-S-8805 SYMBOL 4
- 3 - CIRCUIT DIAGRAM, CATALOG LISTING, DATE CODE, FED. MFG. CODE AND FAA-PMA ARE SHOWN ON NAMEPLATE
- 4 - COINCIDENCE OF OPERATING AND RELEASING POINTS: .015 INCH OF PLUNGER TRAVEL
- 5 - HARDWARE MAY BE PACKAGED UNASSEMBLED PER MIL-S-8805
- 6 - FOR MANUFACTURING DETAILS SEE ASSEMBLY DRAWING 5EN320-6 FOR FAA-PMA.

CHARACTERISTICS	ELECTRICAL DATA		
OPERATING FORCE ----- 6-12 LBS	CONTACT ARRANGEMENT		
FULL OVERTRAVEL FORCE ----- 30 LBS MAX	S P D T (4)		
RELEASE FORCE ----- 4 LBS MIN	LOAD	28 VDC	
PRETRAVEL ----- .040 MAX		SEA LEVEL	50,000 FT
DIFFERENTIAL TRAVEL ----- .030 MAX	RES	4	4
OVERTRAVEL ----- .500 MIN	IND	2	2
	MOTOR	4	
	LAMP		

DESIGN UNITS: INCH  
TOLERANCES UNLESS NOTED:

NO PLACE	X	±	
ONE PLACE	.X	±	0.030
TWO PLACE	.XX	±	0.015
THREE PLACE	.XXX	±	0.005
FOUR PLACE	.XXXX	±	
ANGLES		±	

THIRD ANGLE PROJECTION



DRAWN	SJB	18JUN79
CHECK	GLH	11JUL79
THIS DRAWING COVERS A PROPRIETARY ITEM AND IS THE PROPERTY OF HONEYWELL. THIS DRAWING IS NOT TO BE COPIED OR USED WITHOUT THE PERMISSION OF HONEYWELL.		
INTERPRET PER ASME Y14.5M-1994 OTHER HONEYWELL ENGINEERING STANDARDS MAY APPLY		
RASTER		

**Honeywell**

TITLE

**SWITCH - ENCLOSED**

SIZE	TYPE	DRAWING NAME	REV
B	I	5EN320-6	5
SCALE	1:1	WEIGHT 15.3 OZ MAX	SHEET 1 OF 1

# Mouser Electronics

Authorized Distributor

Click to View Pricing, Inventory, Delivery & Lifecycle Information:

[Honeywell:](#)

[5EN320-6](#)