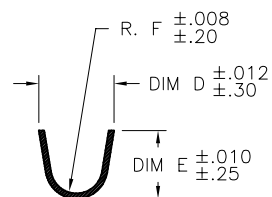
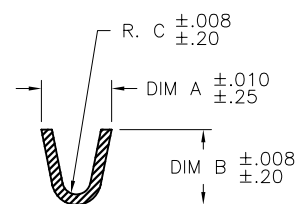
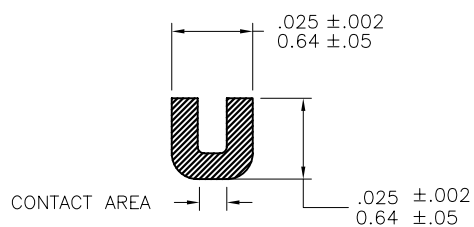
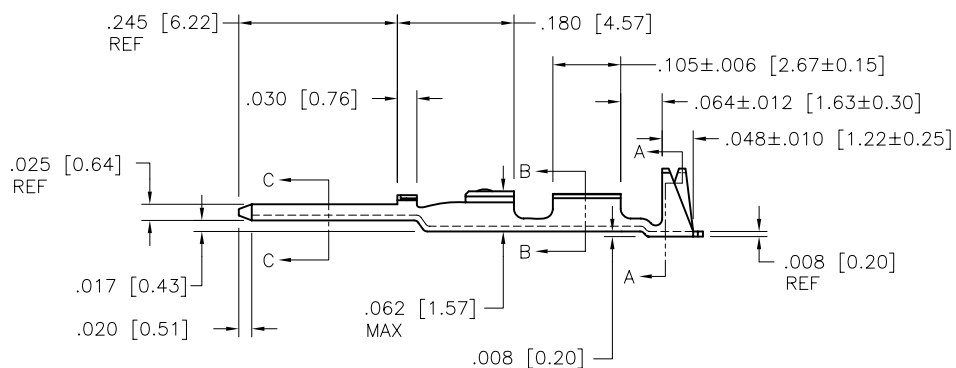
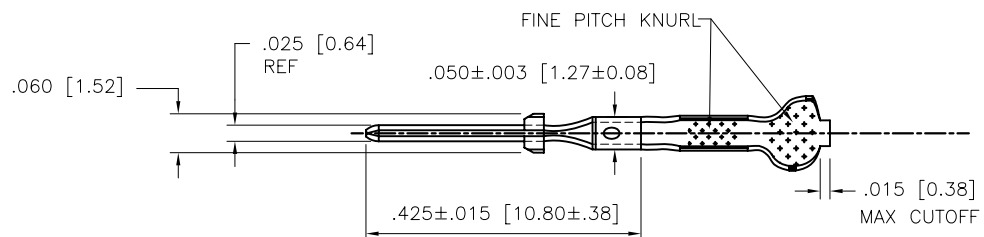
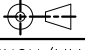



PRODUCT NUMBER

SEE SHEET 2

SECTION A-A  
SCALE 2:1SECTION B-B  
SCALE 2:1SECTION C-C  
SCALE 5:1

mat'l. code 3/4 HD BRASS CDA NO. 260				surface	tolerance	projection	product family PV TERMINAL	
ltr	ec'n no	dr	date	tolerances unless otherwise specified			title	
D	V41704	SAR	1994-11-30	angles	$XX \pm .01 / X \pm .3$	INCH/MM	CTW MALE PIN LOOSE PIECE	
E	V05-0467	HTB	2005-05-23	$0^\circ \pm 2'$	$XXX \pm .005 / XX \pm .13$	scale 4/1		
F	V05-0530	HTB	2005-05-31	dr	$XXXX \pm .0020 / XXX \pm .051$		dwg no	sheet 1 of 2
G	V06-0623	HTB	2006-06-28	engr	S. ROYER 1994-11-30	FCI	75654	size A4
H	V07-0218	HTB	2007-03-16	chr	T. HANNA 1994-11-30		CUSTOMER Drawing	
				appd	T. HANNA 1994-11-30			
sheet index	revision sheet	H	H					
		1	2					

PRODUCT NUMBER NOTE 4	WIRE AWG	WIRE BARREL			INSULATION BARREL			
		A	B	C	D	E	F	
75654-001	28-32	.054/1.37	.058/1.47	.011/0.28	.115/2.92	.105/2.67	.040/1.02	OBSOLETE
75654-001LF	28-32	.054/1.37	.058/1.47	.011/0.28	.115/2.92	.105/2.67	.040/1.02	NOTE 6
75654-002	22-26	.070/1.78	.065/1.65	.017/0.43	.139/3.53	.120/3.05	.050/1.27	OBSOLETE
75654-002LF	22-26	.070/1.78	.065/1.65	.017/0.43	.139/3.53	.120/3.05	.050/1.27	NOTE 6
75654-003	18-20	.104/2.64	.104/2.64	.021/0.53	.139/3.53	.120/3.05	.050/1.27	OBSOLETE
75654-003LF	18-20	.104/2.64	.104/2.64	.021/0.53	.139/3.53	.120/3.05	.050/1.27	NOTE 6

## NOTES:

1. PLATING: 100 $\mu$ " / 2.54 $\mu$  SnPb MINIMUM PRE-PLATED  
P/N WITH LF SUFFIX: 100 $\mu$ " / 2.54 $\mu$  Sn MINIMUM PRE-PLATED
2. PART MAY BE USED WITH MINI-LATCH HSG.
3. APPLICABLE SPECIFICATIONS:  
A. BUS-12-098: PRODUCT SPECIFICATION  
B. TA-211: CRIMP SPECIFICATION
- ④. PART NUMBERS WITH AN LF SUFFIX MEET EUROPEAN UNION DIRECTIVES AND OTHER COUNTRY REGULATIONS AS DESCRIBED IN GS-22-008.
5. THIS PRODUCT IS NOT INTENDED TO BE EXPOSED TO MANUFACTURING SOLDER PROCESSES.
- ⑥. THIS PRODUCT HAS 100% TIN PLATING IN THE INTERFACE AND HAS NOT BEEN TESTED FOR WHISKER GROWTH IN ALL INTERCONNECT ENVIRONMENTS.

mat'l. code 3/4 HD BRAS CDA NO. 260				surface <input checked="" type="checkbox"/>	tolerance	projection	product family PV TERMINAL	
ltr	ecn no	dr	date	tolerances unless otherwise specified			title	
H				angles	$\frac{XX}{XXX} \pm 0.1/XX \pm 3$ $\frac{XXX}{XXX} \pm 0.05/XX \pm 13$	INCH/MM	CTW MALE PIN LOOSE PIECE	
				0° ±2°	XXXX ±0.020/XXX ±0.051	scale 1:1	dwg no	
				dr	T. BREWBAKER	2005-05-23	sheet 2 of 2	
				engr	T. BREWBAKER	2005-05-23	75654	
				chr	T. BREWBAKER	2005-05-23	type	
				appd	T. BREWBAKER	2005-05-23	CUSTOMER Drawing	
sheet index	revision sheet							

# Mouser Electronics

Authorized Distributor

Click to View Pricing, Inventory, Delivery & Lifecycle Information:

FCI:

[75654-001](#) [75654-003](#)