



ALL RIGHTS RESERVED. NO PORTION OF THIS PUBLICATION, WHETHER IN WHOLE OR IN PART, CAN BE REPRODUCED WITHOUT THE EXPRESS WRITTEN CONSENT OF SPC TECHNOLOGY.

SPC-F005.DWG

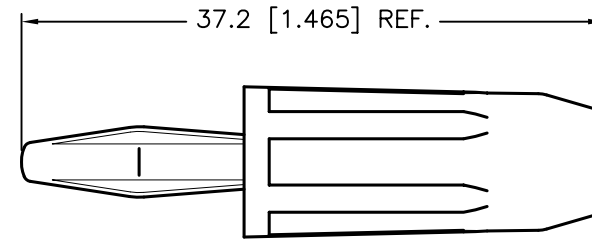
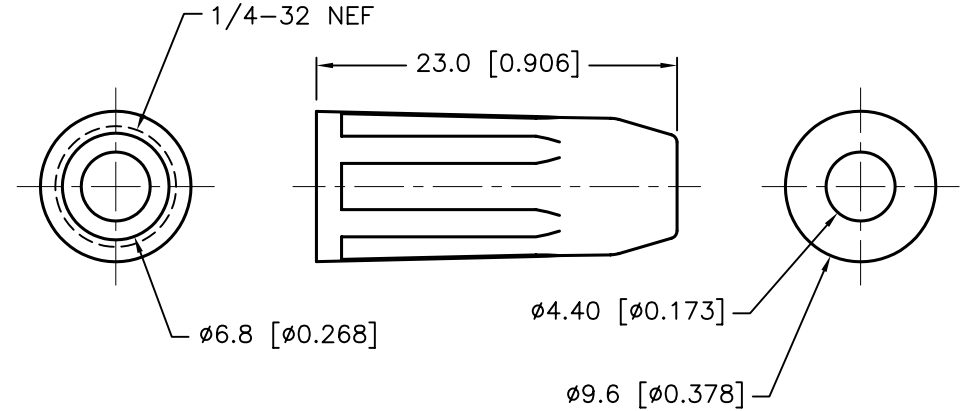
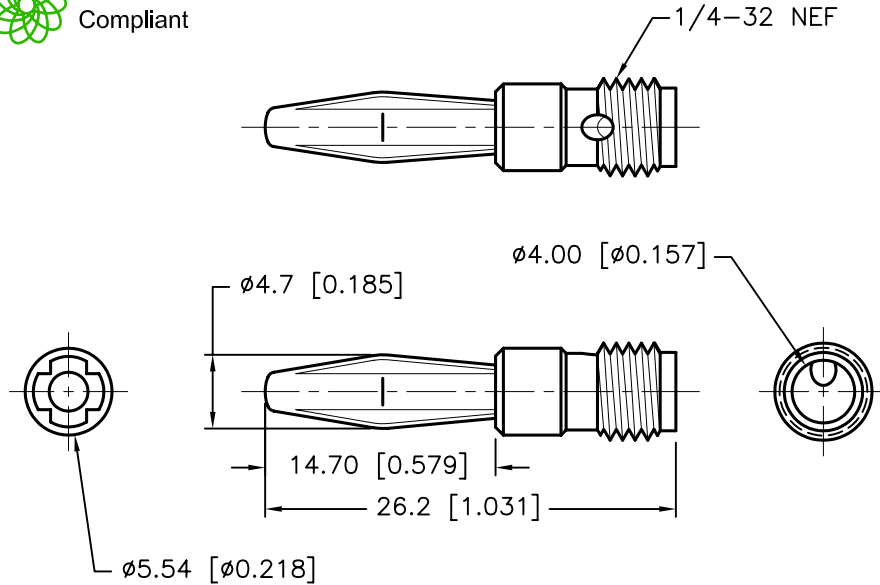
REVISIONS

DOC. NO. SPC-F005 * Effective: 7/8/02 * DCP No: 1398

DCP #	REV	DESCRIPTION	DRAWN	DATE	CHECKD	DATE	APPRVD	DATE
1876	A	RELEASED	EO	05/23/06	TL	06/07/06	HO	06/07/06
1921	B	Update Specification	YA	8/7/06	HO	8/7/06	HO	8/7/06



RoHS
Compliant



ASSEMBLY

Material:

1. Body: Brass, Nickel-Plated
2. Banana Plug: Phosphor Bronze, Nickel-Plated
3. Handle: PS475 (Max. Heat Deflection Temperature: 89°C)

SPC TYPE No.

COLOR

SPC15427	BLACK
SPC15424	RED
SPC15232	BLUE
SPC15278	GREEN
SPC15259	WHITE
SPC15250	YELLOW

DISCLAIMER:
ALL STATEMENTS AND TECHNICAL INFORMATION CONTAINED HEREIN ARE BASED UPON INFORMATION AND/OR TESTS WE BELIEVE TO BE ACCURATE AND RELIABLE. SINCE CONDITIONS OF USE ARE BEYOND OUR CONTROL, THE USER SHALL DETERMINE THE SUITABILITY OF THE PRODUCT FOR THE INTENDED USE AND ASSUME ALL RISK AND LIABILITY WHATSOEVER IN CONNECTION THEREWITH.

TOLERANCES:

Unless Otherwise
Specified

.X ± 0.2 [0.008]
.XX ± 0.12 [0.005]

DRAWN BY:

EKLAS ODISH

CHECKED BY:

THOMAS LEE

APPROVED BY:

HISHAM ODISH

DATE:

05/23/06

DATE:

06/07/06

DATE:

06/07/06

DRAWING TITLE:

INSULATED SOLDERLESS BANANA PLUG

SIZE

A

DWG. NO.

TA-754

ELECTRONIC FILE

TA-754.DWG

REV

B

SCALE: NTS

U.O.M.: mm [INCHES]

SHEET: 1 OF 1