

.100" X .100" LATCH/EJECTOR, STRAIGHT, COMPLIANT PIN



X XXXX-6X0T02XX

- PLATING:
RB = 30μ" [0.76μm] GOLD WITH MATTE TIN TAILS
(APP. E1 & C1 APPLY)
TC = 30μ" [0.76μm] GOLD WITH TIN LEAD TAILS
(APP. E2 & C2 APPLY)

3M IS A TRADEMARK OF 3M COMPANY.
FOR TECHNICAL, SALES OR ORDERING
INFORMATION CALL 800-225-5373

2 PHYSICAL :

INSULATOR: MATERIAL: GLASS FILLED POLYESTER (PCT)
FLAMMABILITY: UL94V-0
COLOR: BLACK
CONTACT: MATERIAL: COPPER ALLOY
PLATING:
UNDER PLATING: 100μ" [2.54μm] NICKEL
WIPING AREA: 30μ" [0.76μm] AVG. GOLD
SOLDER TAILS: 100μ" [2.54μm] TIN LEAD OR 300μ" [7.62μm] MATTE TIN
(SEE ORDERING INFORMATION)
MARKINGS: 3M LOGO, PART IDENTIFICATION NUMBER AND ORIENTATION TRIANGLE

2 ELECTRICAL :

CURRENT RATING: 1A
INSULATION RESISTANCE: $>1 \times 10^9 \Omega$ AT 500 V_{DC}
WITHSTANDING VOLTAGE: 1,000V_{RMS} AT SEA LEVEL

2 ENVIRONMENTAL :

TEMPERATURE RATING: -55° C TO 105° C

4 MOUNTING HARDWARE:
REAR ENTRY:
#4-24 THREAD CUTTING SCREW
(3M PART #3341-5) WITH
Ø .116 [2.95] MOUNTING HOLE.
FRONT ENTRY:
(PRIOR TO INSTALLATION OF LATCH)
#2-56 BOLT AND NUT (3M PART
#3341-6) WITH Ø .106 [2.69]
MOUNTING HOLE.

DIMENSIONS: INCHES [MM] [MM] IS REF. ONLY				E 56068		JUL 31, 2014		JNC	RS
DESIGN REFERENCE				NEXT ASSEMBLY					
ACCESS CODES				REV ECO		ISSUE DATE AND DESCRIPTION		DRFT	CHKD
XXXXXXXXXX		XXXXXXXXXX		CST1G1ONE		DATE JUL 31, 2014		DATE	
XXXXXXXXXX		XXXXXXXXXX		CHKD		DATE		APPRV. R. SCHERER	DATE SEP 05, 2014
DIVISION				DIVISION CODE					
Interconnect Solutions				EMSD					
DO NOT SCALE		SCALE 2		TOLERANCES EXCEPT AS NOTED					
DRAWING									
				INCHES .00 ± .01 .000 ± .005 .0000 ±					
THIRD ANGLE PROJECTION				MILLIMETERS 0 ± .00 ± .3 .000 ± .13 .000 ±					
INTERPRET PER ASME Y14.5 - 2009									
MAX. SURFACE ROUGHNESS									
<input checked="" type="checkbox"/> UNFINISHED SURFACES <input type="checkbox"/> MARKED ONLY				ANGLES 3000 SERIES					
TITLE HEADER, 4-WALL, .100 X .100 LATCH/EJECTOR, STR, COMPLIANT PIN						CAGE NUMBER D78-5100-0478-7		REV.	E
MODEL 3000 SERIES						DET. LISTS <input type="checkbox"/> YES <input checked="" type="checkbox"/> NO		SHT 1 OF 4	

cUL[®] US
UL FILE NO: E68080

3M™ FOUR-WALL HEADER, 3000 SERIES
.100" X .100" LATCH/EJECTOR, STRAIGHT, COMPLIANT PIN

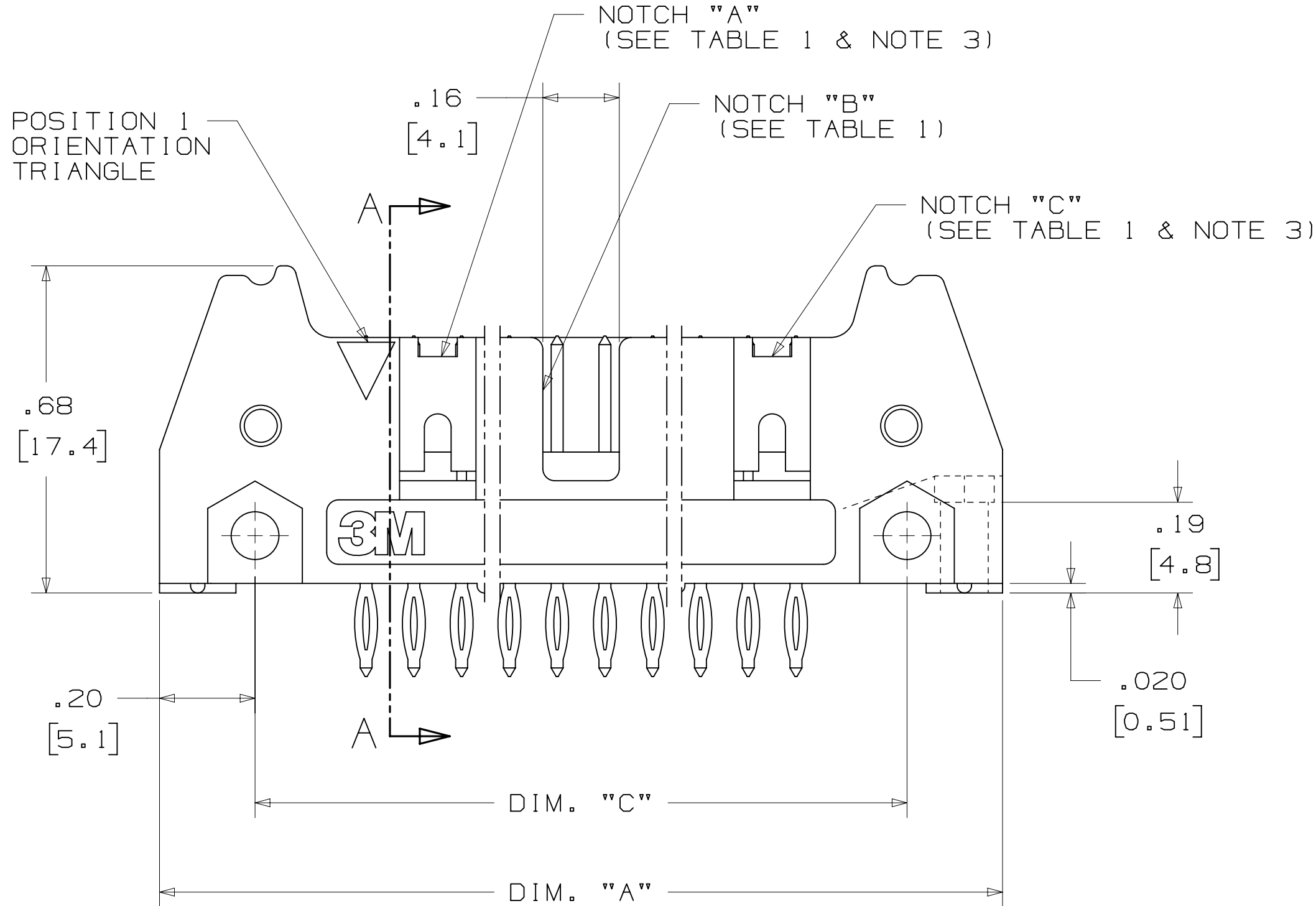
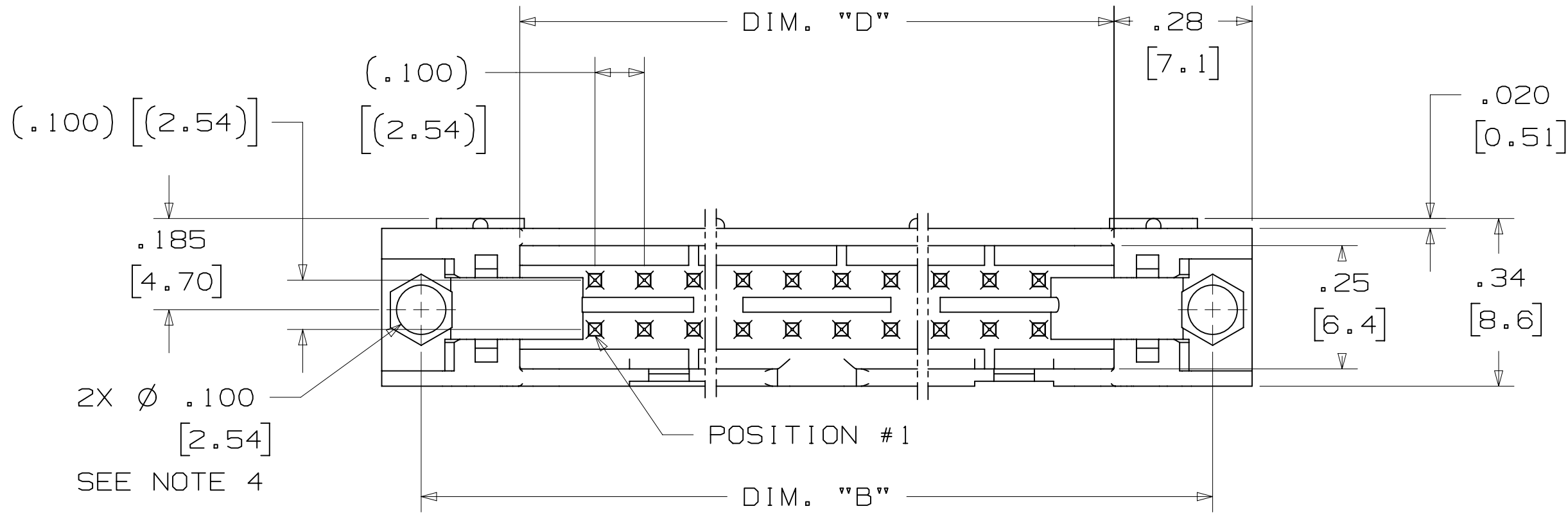
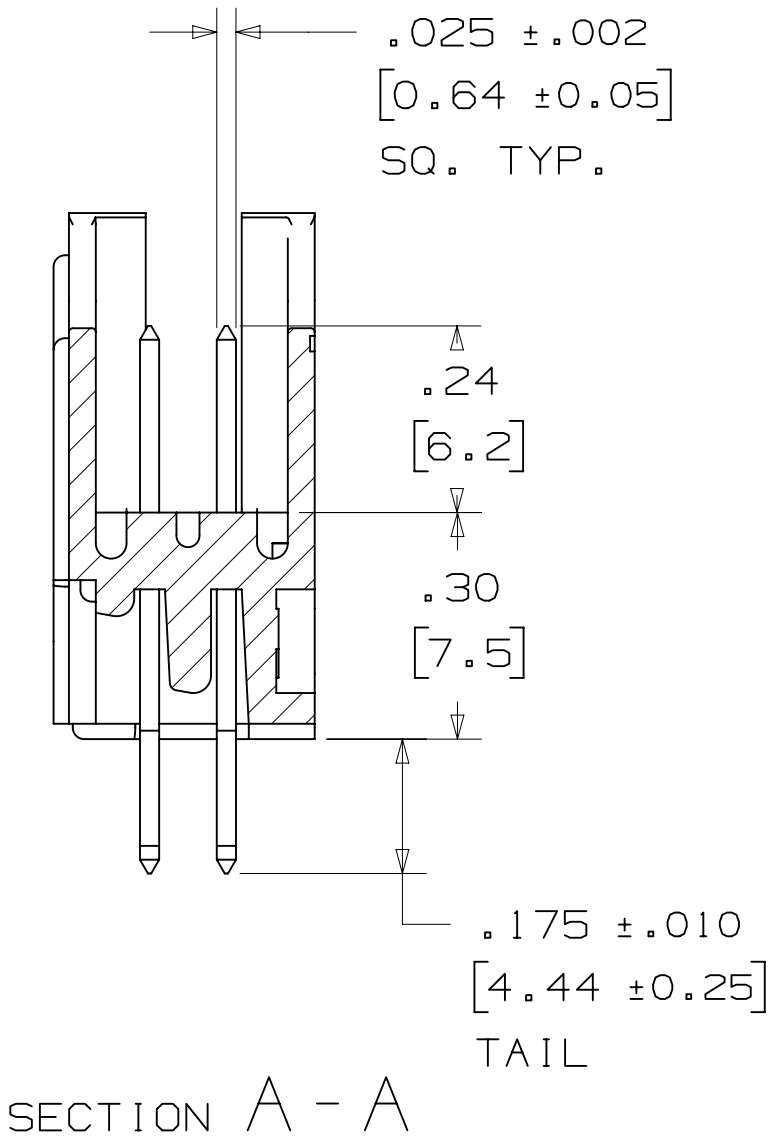


TABLE 1								
PIN QTY.	3M PART NUMBER	DIM. "A"	DIM. "B"	DIM. "C"	DIM. "D"	POLARIZING NOTCHES	INSERTION PLATEN 3442-00XX	PIN QTY.
10	3793	1.26 [32.1]	1.105 [28.04]	.865 [21.97]	.71 [18.0]	BC	3442-0048	10
14	3314	1.46 [37.2]	1.305 [33.12]	1.065 [27.05]	.91 [23.1]	BC	3442-0049	14
16	3408	1.56 [39.7]	1.405 [35.66]	1.165 [29.59]	1.01 [25.6]	ABC	3442-0050	16
20	3428	1.76 [44.8]	1.604 [40.74]	1.365 [34.67]	1.21 [30.7]	ABC	3442-0051	20
24	3627	1.96 [49.9]	1.805 [45.82]	1.565 [39.75]	1.41 [35.8]	ABC	3442-0052	24
26	3429	2.06 [52.4]	1.905 [48.36]	1.665 [42.29]	1.51 [38.3]	ABC	3442-0053	26
30	3440	2.26 [57.5]	2.105 [53.44]	1.865 [47.37]	1.71 [43.4]	ABC	3442-0054	30
34	3431	2.46 [62.6]	2.305 [58.52]	2.065 [52.45]	1.91 [48.5]	ABC	3442-0055	34
40	3432	2.76 [70.2]	2.605 [66.14]	2.365 [60.07]	2.21 [56.1]	ABC	3442-0056	40
50	3433	3.26 [82.9]	3.105 [78.84]	2.865 [72.77]	2.71 [68.8]	ABC	3442-0057	50
60	3372	3.76 [95.6]	3.605 [91.54]	3.365 [85.47]	3.21 [81.5]	ABC	3442-0058	60
64	3764	3.96 [100.7]	3.805 [96.62]	3.565 [90.55]	3.41 [86.6]	ABC	3442-0059	64

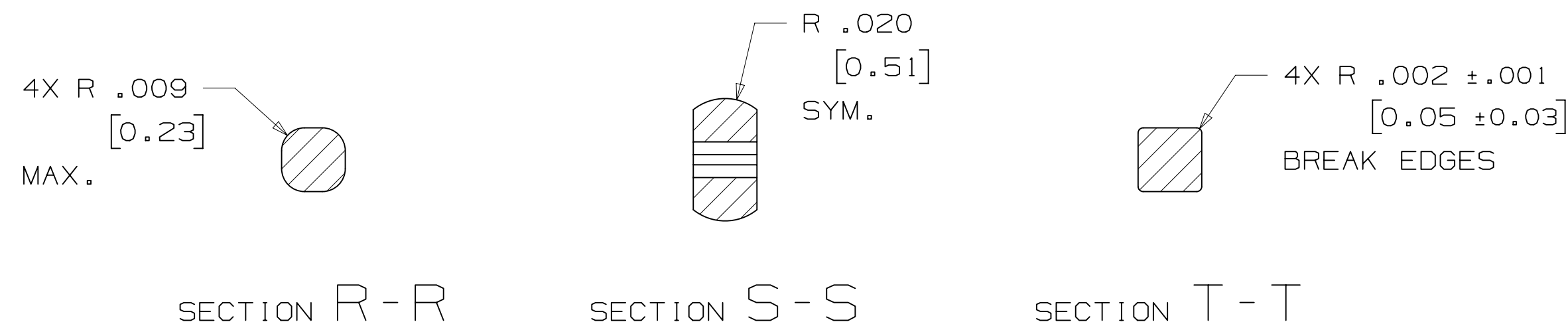
ASSEMBLY EQUIPMENT:
USE 3442-00XX PLATEN (SEE TABLE #1) AND APPROPRIATE COMMERCIAL ARBOR PRESS
TO PRESS HEADER INTO PC BOARD.

DESIGN REFERENCE		NEXT ASSEMBLY		E 56068	JUL 31,2014		JNC	RS
REV		ECO		REVISED AND REDRAWN				
DRP CASTIGLIONE		DATE JUL 31,2014		MFG		DATE		
CHKD		DATE		APPRV R. SCHERER		DATE SEP 05,2014		
DIVISION Interconnect Solutions		DIVISION CODE EMSD		3M Center St. Paul, MN 55144				
DO NOT SCALE DRAWING		SCALE 4 1		TOLERANCES EXCEPT AS NOTED		© 3M COPYRIGHT 2015 This document and the information it contains are 3M property and may not be reproduced or further distributed without 3M permission, or used or disclosed other than for 3M authorized purposes. All rights reserved.		
		THIRD ANGLE PROJECTION		INCHES .0 ±.01 .000 ±.005 .0000 ±		TITLE HEADER, 4-WALL, .100 X .100 LATCH/EJECTOR, STR, COMPLIANT PIN		
INTERPRET PER ASME Y14.5 - 2009		MILLIMETERS 0 ± .0 ±.3 .00 ±.13 .000 ±		CAGE NUMBER D78-5100-0478-7		DRAWING NO.		REV. E
MAX SURFACE ROUGHNESS 12.5 SURFACES		MARKED ONLY		MODEL 3000 SERIES		DET LISTS		YES X NO SHT 2 OF 4

.100" X .100" LATCH/EJECTOR, STRAIGHT, COMPLIANT PIN



HOLE SIZE FOR:
 * PREFERRED DRILLED: $\varnothing .0453 \pm .0005$
 * ACCEPTABLE DRILLED: $\varnothing .0453 \pm .0005 / - .0010$
 * AFTER ETCHBACK: $\varnothing .0460$ MAX.
 * AFTER PLATING: $\varnothing .040 \pm .003$
 * BOARD THICKNESS: .093 TO .150
 PLATING:
 * .001 MIN. COPPER PLATING THICKNESS
 * .0003 MIN. TIN PLATING



THIS SPEC SHEET DETAILS OUR STANDARD OFFERING.

3M HAS SEVERAL CAPABILITIES THAT CAN PROVIDE A PART TAILORED TO YOUR SPECIFIC NEEDS. ASK YOUR 3M SALES REPRESENTATIVE OR CUSTOMER SERVICE FOR MORE DETAILS.

BOTH SNAP-IN AND ROLL PIN LATCHES MAY BE ORDERED SEPARATELY. SNAP-IN AND ROLL PIN STYLE LATCHES ARE DIMENSIONALLY AND FUNCTIONALLY EQUIVALENT. IF ORDERING SNAP-IN OR ROLL PIN STYLE LATCHES SEPARATELY, PLEASE USE THE BELOW CHART.

LONG SHORT

SNAP-IN LATCHES

(.03)
[(0.8)]
TYP.

NOTE:
SNAP-IN LATCHES CAN ONLY BE ORDERED
SEPARATELY AND ARE THE CUSTOMERS
RESPONSIBILITY TO INSTALL.

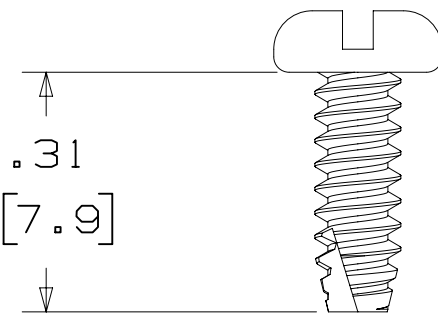
NOTE:
INSERT POST INTO ONE MOUNTING
HARDWARE HOLE ON BOTTOM OF HEADER.
SET POST TO PROTRUDE .115 [2.92]

NOTE:
#2216 B/A SCOTCHWELD CAN BE USED TO
ADHERE KEYS.

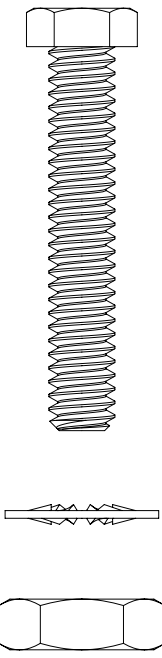
JUL 31, 2014		JNC	IS
REVISED AND REDRAWN			
REV		ECO	ISSUE DATE AND DESCRIPTION
DATE		JUL 31, 2014	MFG DATE
CHKD		DATE	SEP 05, 2014
APPR.		R. SCHERER	
DIVISION CODE		DIVISION	
EMSD		Interconnect Solutions	
DO NOT SCALE DRAWING		SCALE 4/1	
TOLERANCES EXCEPT AS NOTED		3M Center St. Paul, MN 55144	
INCHES		TITLE	
.00 ±.01		HEADER, 4-WALL, .100	
.000 ±.005		X .100 LATCH/EJECTOR	
.0000 ±		STR, COMPLIANT PIN	
THIRD ANGLE PROJECTION		MILLIMETERS	
INTERPRET PER ASME Y14.5 - 2009		0 ±.3	
MAX SURFACE ROUGHNESS		0 ±.13	
ALL SURFACES		0 ±.000	
✓ MARKED ONLY		CASE NUMBER	
		D 78-100-0478-7	
MODEL		SIZE	
3000 SERIES		DRAWING NO.	
		DEL. LISTS	
		YES YES NO	
		SHT 3 OF 4	

3M™ FOUR-WALL HEADER, 3000 SERIES
.100" X .100" LATCH/EJECTOR, STRAIGHT, COMPLIANT PIN

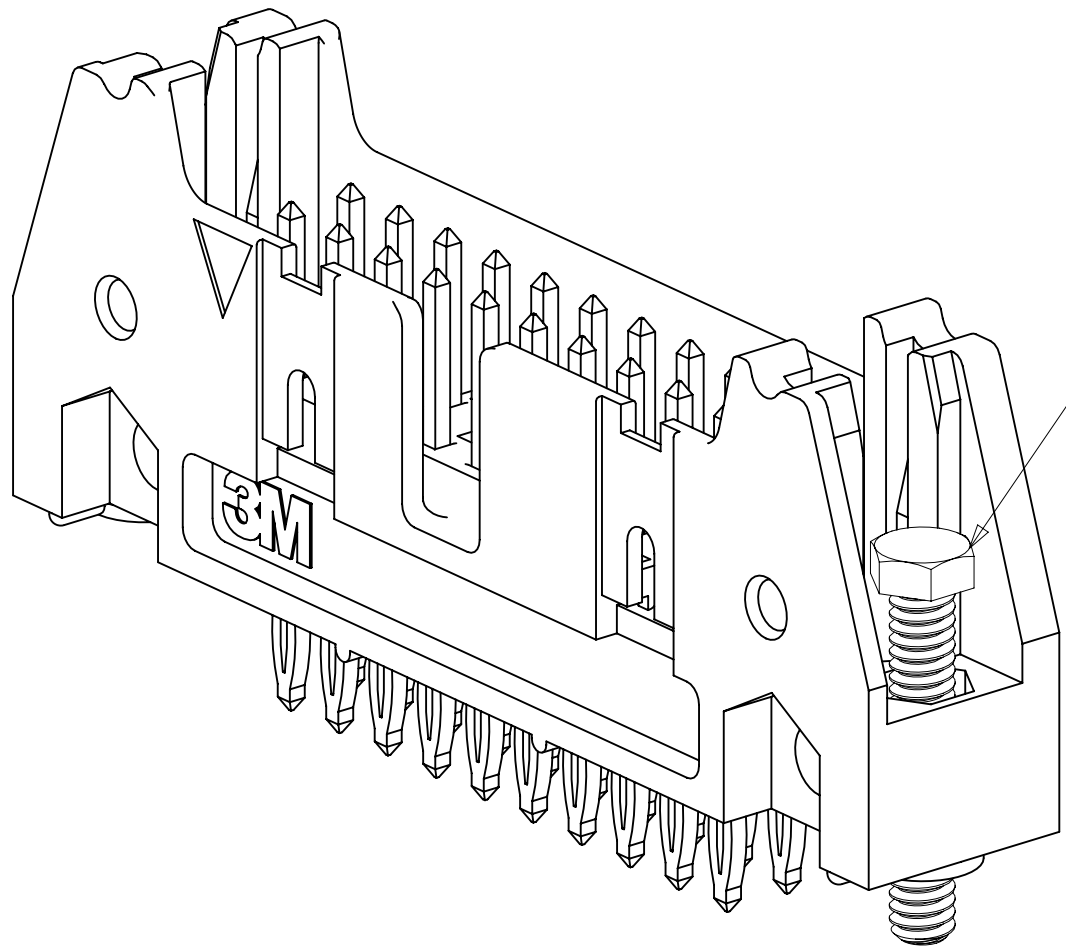
MOUNTING HARDWARE



3341-5
(INSTALL FROM BOTTOM OF BOARD)
PANHEAD THREAD CUTTING SCREW:
#4-24 X 5/16"
TYPE: USA STD BT, FEDERAL BG
MATERIAL: STAINLESS STEEL

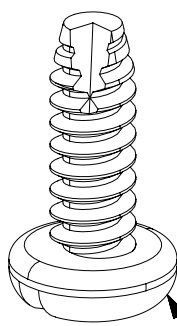
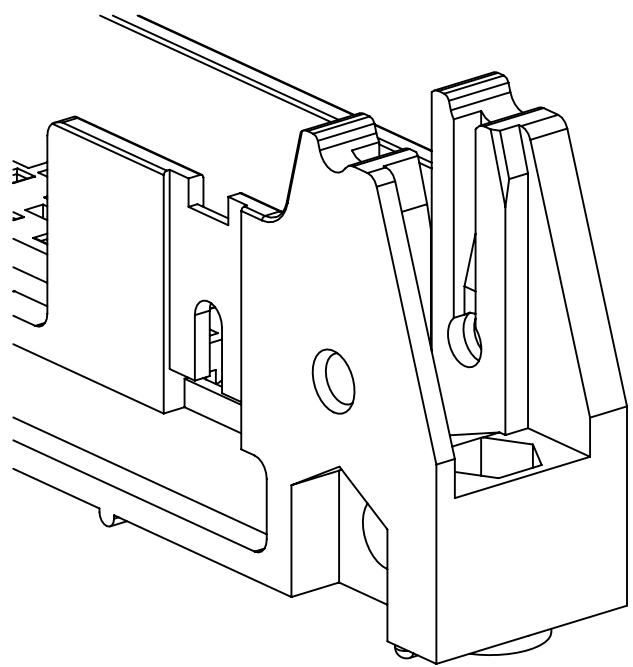


3341-6
HEX HEAD BOLT, NUT AND WASHER:
BOLT - #2-56 X 1/2"
MATERIAL: STAINLESS STEEL



STRAIGHT VERSION INSTALL
(MUST BE INSERTED PRIOR TO
LATCH INSTALL)

3341-6
#2-56 NUT AND BOLT
TORQUE FOR EACH BOLT: 1.25 - 3.125 INCH LBS.



3341-5
#4-24 TYPE BT SELF THREADING SCREW
WHEN USING LATCHES, MAXIMUM LENGTH
OF SCREW IS .250 INCHES PLUS
THICKNESS OF THE BOARD.
TORQUE FOR EACH SCREW IS 3-5 INCH LBS.

DESIGN REFERENCE		NEXT ASSEMBLY		REV	ECO	ISSUE DATE AND DESCRIPTION		DRFT	CHKD
X		X		DRP	CASTIGLIONE	DATE	JUL 31, 2014	MFG	DATE
X		X		CHKD		DATE		APPR	DATE
X		X						R. SCHERER	SEP 05, 2014
DIVISION		DIVISION CODE		© 3M COPYRIGHT 2015					
Interconnect Solutions		EMSD		3M Center St. Paul, MN 55144					
DO NOT SCALE DRAWING		SCALE 4 1		TOLERANCES EXCEPT AS NOTED					
THIRD ANGLE PROJECTION		INCHES		.00 ± .01					
INTERPRET PER ASME Y14.5 - 2009		MILLIMETERS		.000 ± .005					
MAX SURFACE ROUGHNESS		SURFACES		.000 ± .000					
MARKED ONLY		ANGLES		3					
TITLE		CAGE NUMBER		SIZE		DRAWING NO.		REV.	
HEADER, 4-WALL, .100 X .100 LATCH/EJECTOR, STR, COMPLIANT PIN		D78-5100-0478-7		E		SHT 4 OF 4			
MODEL		3000 SERIES		DET		YES		NO	