



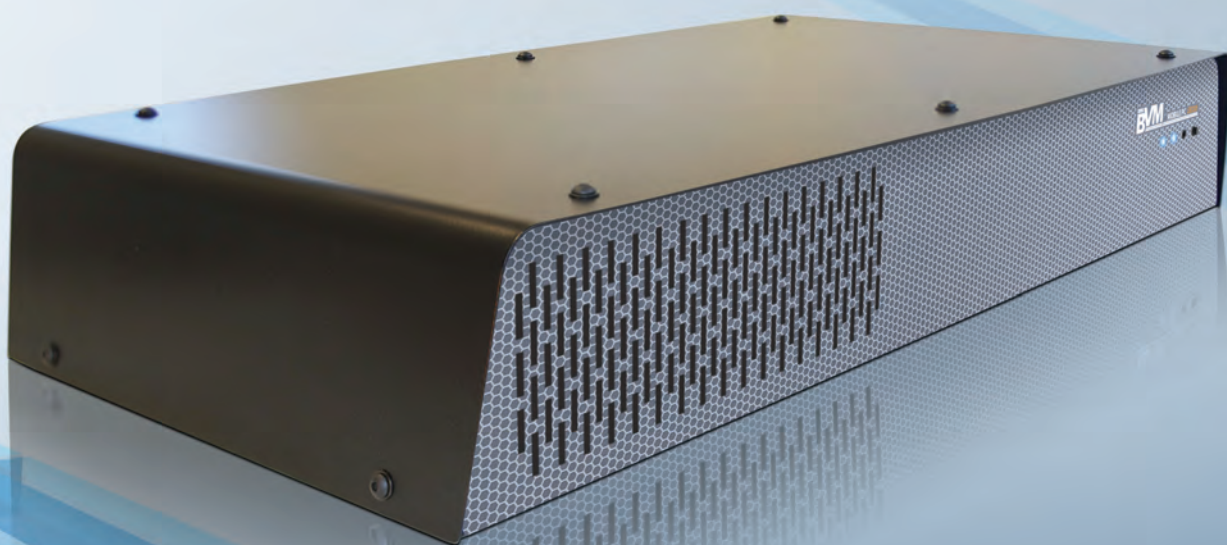
MOBILE PC OB200

M 2 M

Mobile Data

GPS Tracking

Remote Access



OB200 Mobile PC Overview:

The **BVM OB200** is a rugged scaleable one box solution, fixed line alternative, for mobile site locations, transport, mobile data and machine to machine (M2M) applications. This powerful, compact mobile PC has dual expansion slots, integrated extensive 3G cellular, GPS and wireless capabilities (WiFi & Bluetooth).

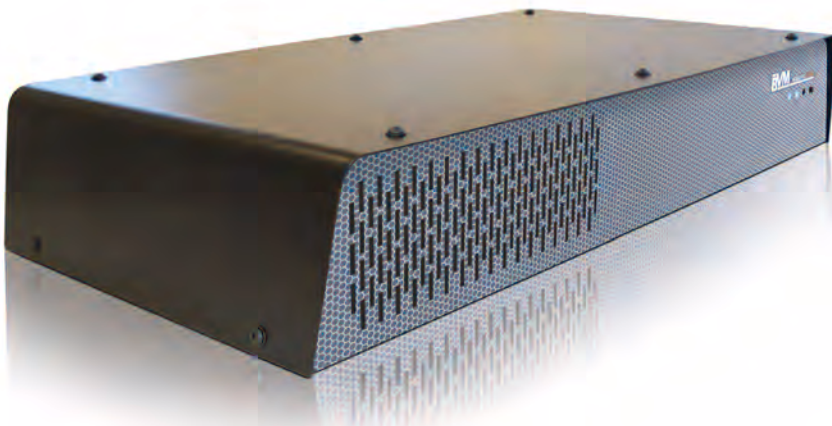
Airtime options, passive and active antenna systems, and various mounting solutions means the **OB200** can be installed in a wide range of environments and used almost anywhere making the **OB200** mobile PC one of the most versatile on the market today.

- *Scaleable configuration*
 - > Powerful iCore processor options
 - > Up to 8GB of RAM
 - > Data storage options (HDD, SSD etc)
 - > Optional power input (12v or integrated vehicle power supply)
- Windows 7, XP Pro (FES), XP Embedded or Embedded Standard 7 available



*"To be the First Choice
Hardware Development Partner
for IPC, Embedded Systems,
Touch Screen Displays,
OEM Design & Build."*





Technical Specifications:

Processor	Intel Core i7/i5/i3 in the rPGA988A socket
Chipset	Intel QM57
Memory	2 x DDR3 800/1066MHz up to 8GB
Graphics	Integrated Intel HD graphics Controller(depends on CPU)
Audio	Integrated Realtek ALC888 High Definition Audio
Hardware Monitor	Hardware monitoring through the Winbond legacy I/O controller
I/O	1 x RS232 and 1 x RS232/422/485 Serial Ports, 10 x USB2.0 ports, 1 x PS/2 keyboard and mouse ports, 1 x LCD inverter, 1 x SMBUS
Cooling	Variable speed fan
Panel indicators	Power, HDD
Panel buttons	Power, reset
Dimensions	65mm(H) x 410mm(W) x 210mm (D)
Weight	2.4Kg
Wireless	HSUPA, HSDPA, UMTS, GPRS, GPS, 802.11b/G/N & Bluetooth
Antenna support	5v active and passive
Power	12v DC, 1A Optional mains power supply
Mounting	Various mounting options available, contact BVM for more information

Images:

Front



Rear

