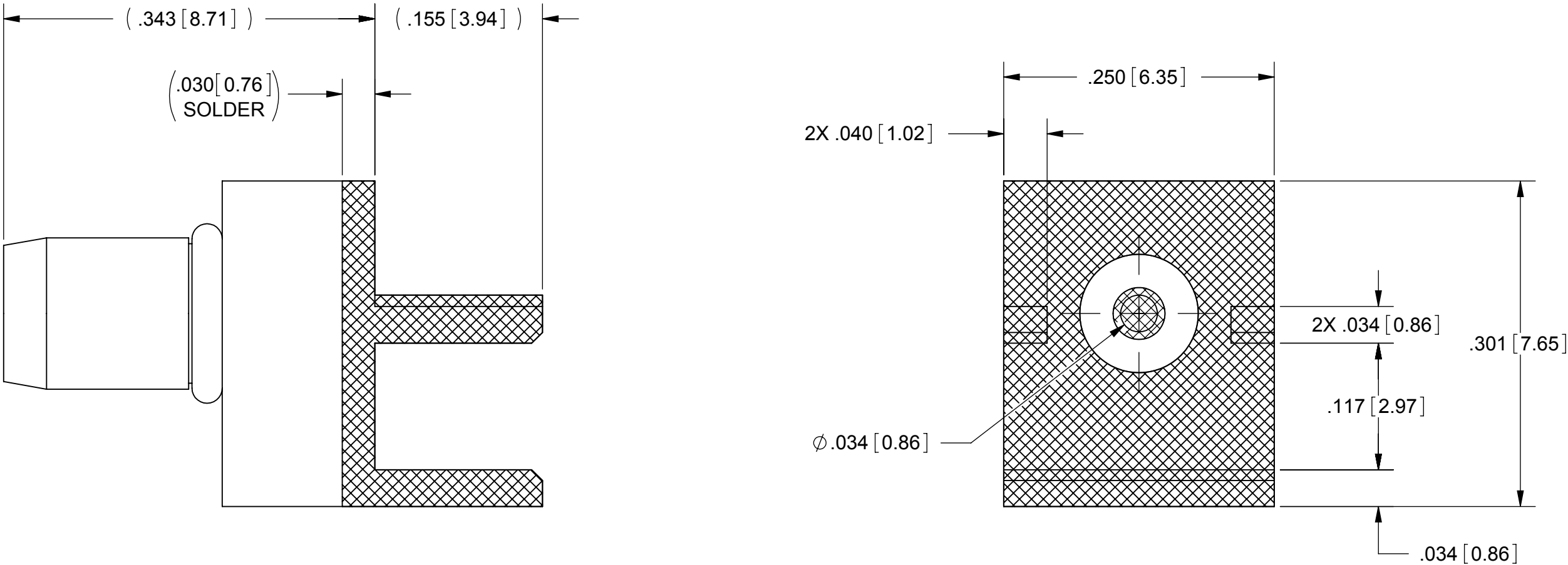


PRODUCT DATA DRAWING

REVISION HISTORY			
REV	DESCRIPTION	DATE	APPROVED
-	DCN 42242	06/16	STW



MATERIAL:

BODY: STAINLESS STEEL PER AMS-5640, ALLOY UNS S30300, TYPE 1

CONTACT: BRASS PER ASTM B16, ALLOY UNS No. C36000

INSULATOR: PTFE PER ASTM D1710, TYPE I, GRADE 1, CLASS B

O-RING: FLUOROSILICONE

FINISH:

BODY & CONTACT: GOLD PER ASTM B488, TYPE II, CODE C, CLASS 1.27, OVER NICKEL PER AMS-QQ-N-290, CLASS 1, .00005" MIN.

PERFORMANCE:

IMPEDANCE: 50 OHMS

- NOTES:
- 1. TO BE TIN DIPPED USING Sn96 SOLDER.
  - 2. ALL DIMENSIONS APPLY PRIOR TO SOLDER DIPPING.

MATERIAL:	SEE NOTES	DIMENSIONS ARE IN INCHES TOLERANCES:  FRACTIONAL: $\pm 1/64$ ANGULAR: X° $\pm 1'0''$ 
-----------	-----------	--