



(2,00 mm) .0787"

S2SD-10-24-L-05.00-DS

S2SD-30-24-L-05.00-S

S2SD, S2SDT SERIES

# TIGER EYE™ CABLE ASSEMBLY

## SPECIFICATIONS

For complete specifications see [www.samtec.com?S2SD](http://www.samtec.com?S2SD) or [www.samtec.com?S2SDT](http://www.samtec.com?S2SDT)

### Insulator Material:

Black LCP

### Contact Material:

BeCu

### Plating:

Au over 50µ" (1,27 µm) Ni

### Wire:

24, 26, 28 or 30 AWG

### Operating Temp Range:

-10°C to +105°C (PVC)

-40°C to +125°C (\*Teflon®)

### Current Rating

(S2SD-24/T2M):

3.8 A per pin

(1 pin powered per row)

### Voltage Rating:

250 VAC

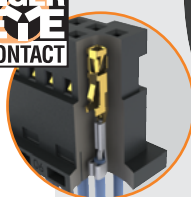
### RoHS Compliant:

Yes

\*DuPont™ Teflon® is a registered trademark of the E.I. du Pont de Nemours and Company or its affiliates.

Mates with:  
T2M

Choice of  
PVC or  
Teflon®  
cable



24, 26, 28  
or 30 Wire  
gauge

Optional  
Screw Down



- Tiger Eye™ contacts
- Retention latches

## ALSO AVAILABLE (MOQ Required)

- Other sizes
- Contact Samtec.

## APPLICATION

-24C CABLE COLOR CODING	
PIN	COLOR
1	BROWN
2	RED
3	ORANGE
4	YELLOW
5	GREEN
6	VIOLET
7	GRAY
8	WHITE
9	BLACK
10	BLUE
ETC	REPEAT

### Notes:

For wiring option information refer to drawing on web.

Teflon® cable is intended for crimp only. Contact Samtec for solderable cable applications.

Some lengths, styles and options are non-standard, non-returnable.

TYPE	PINS PER ROW	WIRE GAUGE	PLATING OPTION	ASSEMBLED LENGTH	END OPTION	END 2 OPTION
<b>S2SD</b> = Double Row PVC Cable	-05, -07, -10, -15, -20, -25, -30 (Standard sizes)	-24 -24C = Color Coded Cable (S2SD only)	-L = 10µ" (0,25 µm) Gold on contact	- "XX.XX" = Wire Length in Inches (69,85 mm) 02.75" min.	-S = Single End  -D = Double End	(Only available with -D, -DR & -DS)  -NUS = Notch up, straight (Pin 1 to Pin N-1)  -NDS = Notch down, straight (Pin 1 to Pin 2)  -NUX = Notch up, crossed (Pin 1 to Pin N)  -NDX = Notch down, crossed (Pin 1 to Pin 1)
<b>S2SDT</b> = Double Row *Teflon® Cable (24, 28, 30 Gauge only)		-26 -28 -30			Specify "S" for single ended and "D" for double ended. - (X)R = Retention Latch (-SR mates with T2M-WT) - (X)S = Screw Down (10 positions minimum) (mates with T2M-DS)	

-SR

-D-NUS