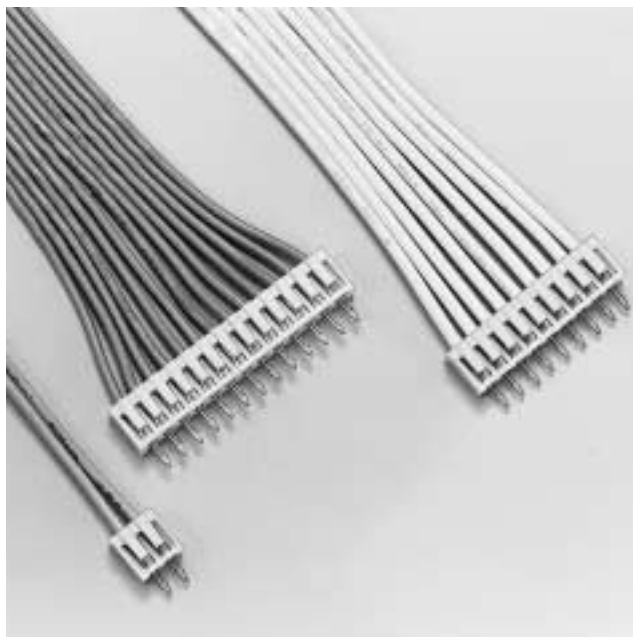


JST
Crimp

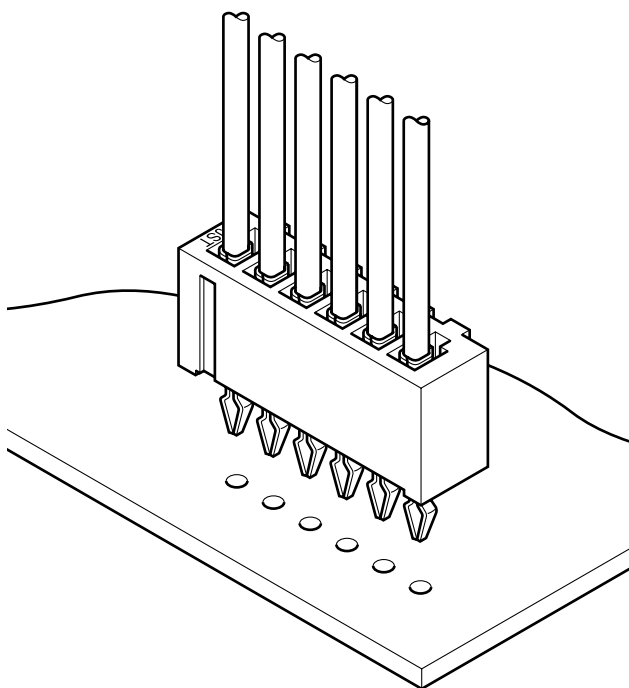
2.5mm
(.098") pitch

SCN CONNECTOR

Board-in Crimp style connectors



This 2.5mm (.098") pitch multi-circuit board-in connector meets the needs for high-density mounting on printed circuit boards. efficiently and economically. The connector can be used for VCRs, car stereo systems, audio products, and many other consumer-oriented electronic products.



Features

• **Housing lances**

The lances on the resilient housing ensure easy and secure insertion into the housing.

• **Secure mounting on printed circuit boards**

The solder tail of the contact has a compliant retention feature, making insertion into printed circuit boards easy, and ensuring secure mounting.

• **Two types of contacts**

Two types of contacts are available according to the application.

Type A

The compliant solder tail of this contact is split in two for greater deflection. This promotes easy insertion and secure mounting on printed circuit boards.

Type B

The two halves of the compliant solder tail are joined at the tip. This additional support provides a sturdy pin that resists deformation during shipping and handling.

Specifications

- Current rating: 3A AC, DC (AWG #22)
 - Voltage rating: 250V AC, DC
 - Temperature range: -25°C to +85°C
(including temperature rise in applying electrical current)
 - Insulation resistance: 1,000M min.
 - Withstanding voltage: 800V AC/minute
 - Applicable wire: AWG #28 to #22
 - Applicable PC board thickness: 1.2, 1.6mm(.047", .063")
- * Contact JST for details.

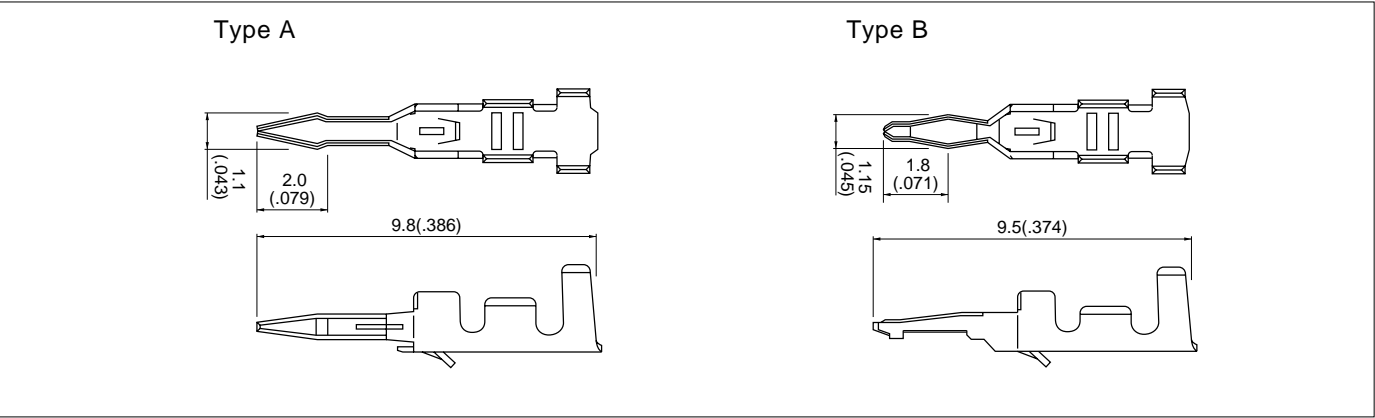
Standards

 Recognized E60389

 Certified LR20812

SCN CONNECTOR

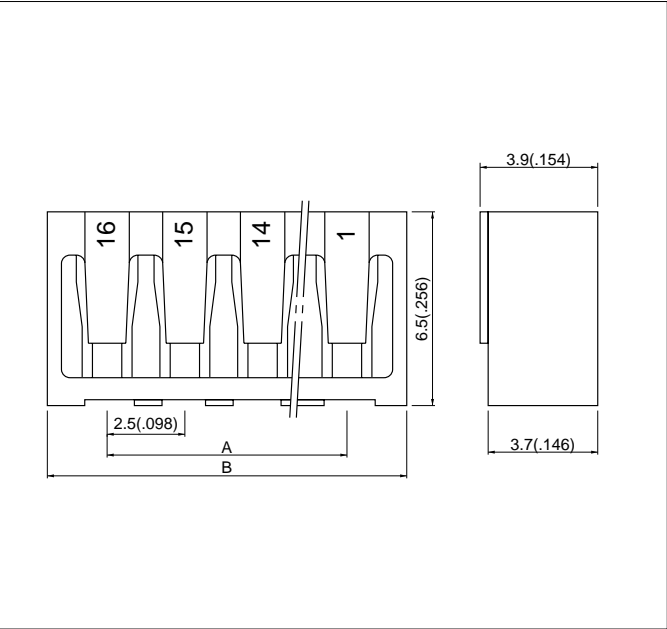
Contact



Model No.	Type	Applicable wire			Material	Q'ty / reel
		mm²	AWG #	Insulation O.D.mm(in.)		
SCN-001T-P1.0	A	0.08 to 0.33	28 to 22	0.9 to 1.7(.035 to .067)	Phosphor bronze	11,000
SCN-001T-1.0K	B				Brass	11,000
Finish						
Tin-plated						

Note:
Contact JST if you require shielded wires, thin wires or other special wires.

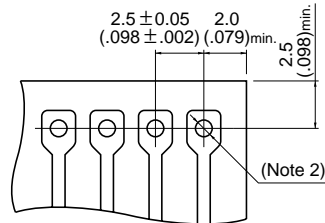
Housing



Cir- cuits	Model No.	Dimensions mm(in.)		Q'ty/bag
		A	B	
2	2P-SCN	2.5(.098)	6.5(.256)	1,000
3	3P-SCN	5.0(.197)	9.0(.354)	1,000
4	4P-SCN	7.5(.295)	11.5(.453)	1,000
5	5P-SCN	10.0(.394)	14.0(.551)	1,000
6	6P-SCN	12.5(.492)	16.5(.650)	1,000
7	7P-SCN	15.0(.591)	19.0(.748)	1,000
8	8P-SCN	17.5(.689)	21.5(.846)	1,000
9	9P-SCN	20.0(.787)	24.0(.945)	1,000
10	10P-SCN	22.5(.886)	26.5(1.043)	1,000
11	11P-SCN	25.0(.984)	29.0(1.142)	1,000
12	12P-SCN	27.5(1.093)	31.5(1.240)	1,000
13	13P-SCN	30.0(1.181)	34.0(1.339)	1,000
14	14P-SCN	32.5(1.280)	36.5(1.437)	1,000
15	15P-SCN	35.0(1.378)	39.0(1.535)	1,000
16	16P-SCN	37.5(1.476)	41.5(1.634)	1,000
Material				
Nylon 66, UL94V-0, ivory				

<For reference> As the color identification,
the following alphabet shall be put in the underlined part.
For availability, delivery and minimum order quantity, contact JST.
ex. 2P-SCN-00
(blank)...natural (ivory)
K...black R...red Y...yellow

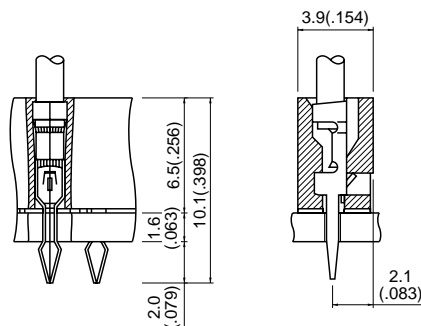
PC board layout (viewed from soldering side)



Note:

- Applicable PC board thickness: Type A 1.6mm(.063")
Type B 1.6mm(.063") and 1.2mm(.047").
- Tolerances are non-cumulative: $\pm 0.05\text{mm}(\pm .002")$
Type A: $1.0 \pm 0.05\text{mm}(.039 \pm .002")$ dia.
Type B: 2 to 6 circuits/ $1.0 \pm 0.05\text{mm}(.039 \pm .002")$ dia.
7 circuits and more/Hole dimensions differ from the above values. Contact JST for details.
- Hole dimensions differ according to the kind of PC board and piercing method. The dimensions above should serve as a guideline.
Contact JST for details.

Assembly layout



Applicator for the semi-automatic press AP-K2N

Contact	Crimp applicator MKS-L		Compact crimp applicator MKS-LS		Strip-crimp applicator MKS-SC
	with safety cover	without safety cover	with safety cover	without safety cover	with safety cover
SCN-001T-1.0K	APLMK SCN001-10	APLNC SCN001-10	APLMKLS SCN001-10	APLLSNC SCN001-10	APLSC SCN001-10
SCN-001T-P1.0	APLMK SCN001-10	APLNC SCN001-10	APLMKLS SCN001-10	APLLSNC SCN001-10	APLSC SCN001-10