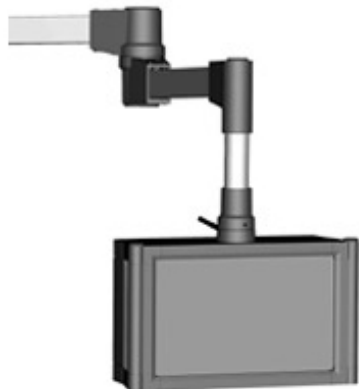


## **Tara Plus Suspension System** *TPSS Series*

**NEMA 12, 13**



### **Application**

- Taraplus enclosure suspension systems are designed for light and medium loads.
- The strength of tube and cast fittings provide a highly flexible robust system.

### **Standards**

- **Complies with**
  - IEC 60529 IP54

### **Construction**

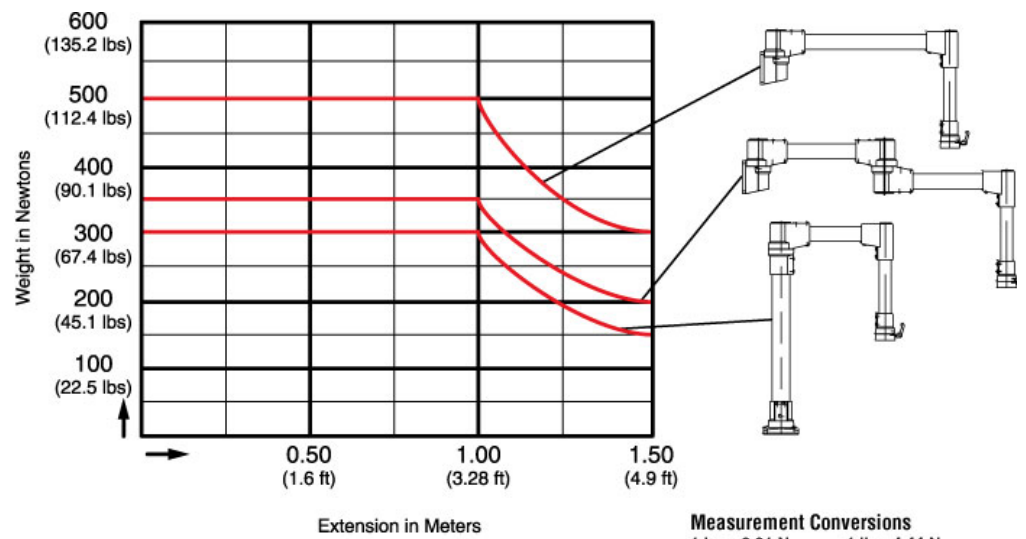
- Enclosure coupling and elbow coupling fittings are die-cast from G AL SI 12 aluminum.
- Suspension tubing is steel.

### **Finish**

- Fittings are finished in RAL 7040 window gray.
- Suspension tubing is RAL 7035 light gray.

### **Accessories**

- |                       |                       |
|-----------------------|-----------------------|
| • Suspension Tube     | • Tara Plus Coupling  |
| • Tilt Coupling       | • Elbow Coupling      |
| • Tilt Elbow Coupling | • Fixed Elbow 48      |
| • Fixed Elbow 70      | • Rotating Elbow      |
| • Base 48             | • Base 70             |
| • Rotating Base 70    | • Socket Joint        |
| • Wall Joint          | • Vertical Wall Joint |
| • Intermediate Joint  |                       |



*Data subject to change without notice*