



## SPECIFICATIONS:

### Mat:

- Construction: Dual layer rubber material
- Static Dissipative top layer
  - Conductive rubber bottom layer

Material Thickness: .060" ( $\pm 10\%$ )

Color: Grey

Texture: Smooth

### Dissipative Color Side:

◦ RTT: 10E6 - 10E8 ohms per ANSI/ESD S4.1

◦ RTG: 10E6 - 10E8 ohms per ANSI/ESD S4.1

*"Slows charge removal; meets minimum recommended work surface requirements of ANSI/ESD S20.20 and recommendations of STM 4.1"*

### Wrist Strap:

Construction: Soft elastic band with silver impregnated polypropylene on the inside for reliable removal of static charge

Snap: 4mm male stud snap

Cord Length: 6'

Cord Terminations: 4mm socket snap, molded banana plug

### Ground Cord:

Length: 15'

Terminations: 10mm male stud snap, ring terminal

Resistor: 1 megohm

### Universal Snap Kit:

Size: 10mm

Kit Includes: 10mm stud snap, 10mm socket snap, threaded backing washer, long screw, short screw, & groundable point label

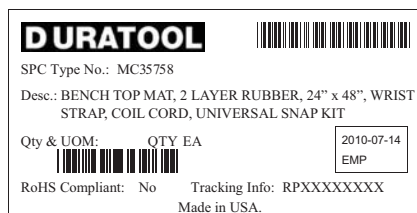
## PACKAGING:

Product to be packaged with Duratool label



MADE IN AMERICA

*Special manufactured items are not returnable for credit*



Packaging Label

### Tolerances:

Width:  $\pm 0.250$ "

Length:  $\pm 0.250$ " every 1 linear foot of running material

CUSTOMER APPROVAL

DATE

BENCH TOP MAT, 2 LAYER RUBBER, 24" x 48", WRIST STRAP, ADJ ELASTIC, 6' COIL CORD, GROUNDING CORD, UNIVERSAL SNAP KIT, PACK WITH DURATOOL LABEL, MC35758

# CMG

3651 WALNUT AVE., CHINO, CA 91710  
PHONE (909) 627-9634 FAX (909) 363-7322  
WEBSITE: [www.CMG-Sales.com](http://www.CMG-Sales.com)

**DRAWING  
NUMBER**  
CMG-10745

**DATE**  
July  
2010