

Flush-type connector - SACC-CIP-M12FS-4P SMD SH T - 1411949

Please be informed that the data shown in this PDF Document is generated from our Online Catalog. Please find the complete data in the user's documentation. Our General Terms of Use for Downloads are valid (<http://phoenixcontact.com/download>)



Flush-type connector, 4-position, SocketLink:straightLink:M12, A - standard, PCB mounting, SMD



Key Commercial Data

| | |
|------------------------|----------|
| Packing unit | 1 pc |
| Minimum order quantity | 60 pc |
| Custom tariff number | 85366990 |
| Country of origin | Germany |

Technical data

Ambient conditions

| | |
|---------------------------------|---|
| Ambient temperature (operation) | -25 °C ... 105 °C (Plug / socket) |
| | -40 °C ... 105 °C (without mechanical actuation) |
| Degree of protection | IP67 (correctly plugged in and locked) |
| | IP65 (not plugged in, by means of additional O-ring seal with device) |

General

| | |
|-----------------------|--|
| Note | The electrical and mechanical data specified assume that the connector pair is correctly locked and mounted. If the connector is unlocked and if there is a danger of contamination, the connector must be sealed using a protective cap > IP54. Influences arising from litz wires, cables or PCB assembly must also be taken into consideration. |
| Rated current at 40°C | 4 A |
| Rated voltage | 250 V |
| Rated surge voltage | 2.5 kV |
| Number of positions | 4 |
| Contact resistance | ≤ 3 mΩ |
| Insulation resistance | ≥ 100 MΩ |
| Coding | A - standard |

Flush-type connector - SACC-CIP-M12FS-4P SMD SH T - 1411949

Technical data

General

| | |
|-----------------------------|--|
| Standards/regulations | M12 connector IEC 61076-2-101 In line with |
| Surge voltage category | II |
| Pollution degree | 3 |
| Connection method | SMD |
| Insertion/withdrawal cycles | > 100 |
| Mounting type | PCB mounting |
| Type of packaging | Tray |

Material

| | |
|---|------|
| Inflammability class according to UL 94 | V0 |
| Contact material | CuZn |
| Contact surface material | Au |
| Contact carrier material | PA |
| Sealing material | FKM |

Classifications

eCl@ss

| | |
|------------|----------|
| eCl@ss 5.1 | 27143423 |
| eCl@ss 6.0 | 27143423 |

ETIM

| | |
|----------|----------|
| ETIM 5.0 | EC002061 |
|----------|----------|

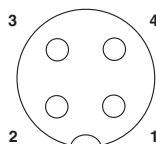
Drawings

Dimensional drawing

SMD
tray
packaging

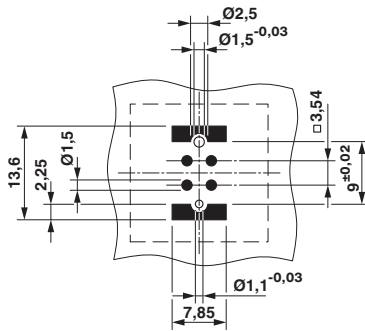
Pin assignment M12 socket, 4-pos., A-coded, view female side

Schematic diagram

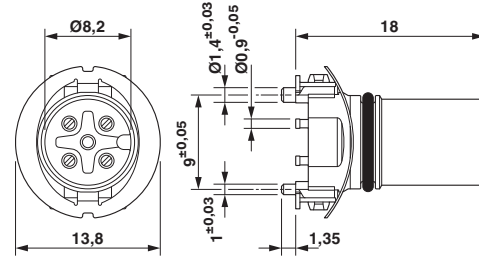


Flush-type connector - SACC-CIP-M12FS-4P SMD SH T - 1411949

Drilling diagram



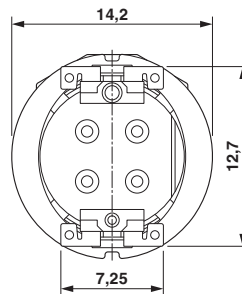
Dimensional drawing



M12 female connector contact carrier

Soldering pad geometry

Dimensional drawing



View of solder side