

1

2

3

4

5

6

7

8

A

B

C

D

E

F

REFERENCE SPECIFICATIONS

-NFC 93425 (in compliance with HE 507)

PHYSICAL CHARACTERISTICS

-INSULATOR MATERIAL: THERMOPLASTIC UL94 V-0

-ACCESSORIES: STAINLESS STEEL or BRASS, cadmium plated yellow passivation

-SHELLS: STEEL, cadmium plated yellow passivation

ELECTRICAL CHARACTERISTICS

-CONTACT/CONTACT : >=1000 V

-CONTACT/GROUND : >=1200 V

-INSULATION RESISTANCE: >=5000 MOhms

ENVIRONMENTAL CHARACTERISTICS

- CLIMATIC CATEGORY: 55/125/56

TEMPERATURE RANGE -55°C TO +125°C

DAMP HEAT STEADY STATE 56 DAYS

SALT SPRAY 48 HOURS

Series

DBMF5W5SN

Shell size: E A B C see sheet 2

Front accessory definition see sheet 2

Blank :without accessory

L :threaded insert M3

O :threaded insert UNC 4-40

V :female screw UNC 4-40

I :female screw M3

F :floating mounting

Contacts

Layout of contacts (see sheet 3)

S :Socket

N :mandatory indication for HE 507 series

FCI

Copyright FCI.

REV E - 2006-03-28

Dr M PESSON2006/11/14

Eng P LEGARE2006/11/14

Chr P LEGARE2006/11/14

Appr P LEGARE2006/11/14

- - - -

- - - -

- - - -

- - - -

ecn noLS06-0174LS07-0273F10-0072- - - -

drMPEMPELSA- - - -

date2006/11/142007/10/302010/07/20- - - -

www.fciconnect.com

surfaceISO 1302- ✓

tolerance stdISO 406ISO 1101

TOLERANCES UNLESS OTHERWISE SPECIFIED

ANGULARLINEAR

0° ±2°

0.X ±0.30.XX ±0.10.XXX ±0.05

projection

sizeA2

ECNF10-0072

Product family- Spec ref

titleSUB FEMALE DMWfull power without contact

catolog no- CUSTOMER

dwg noC01-8637-1731

Rev.C

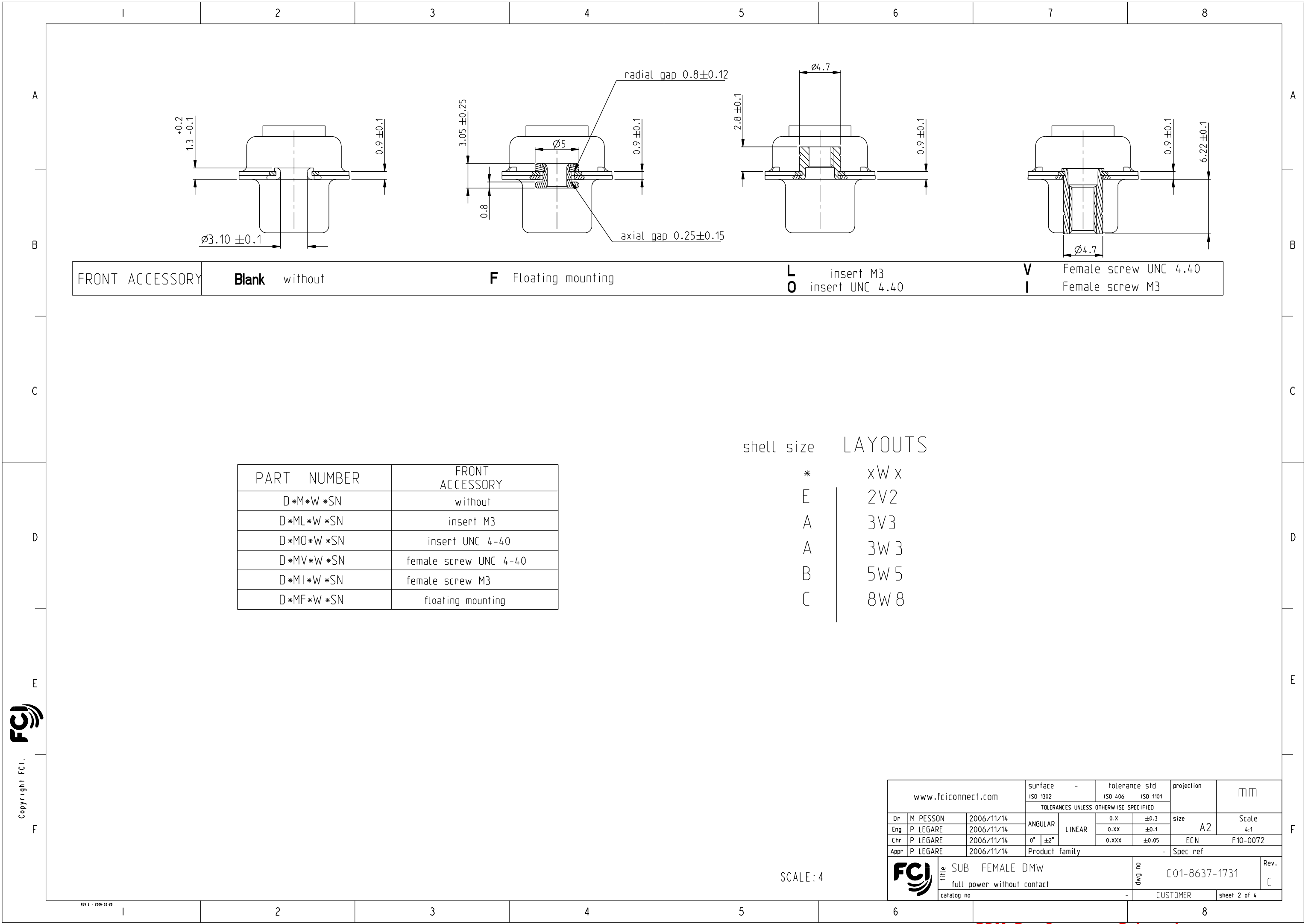
sheet 1 of 4

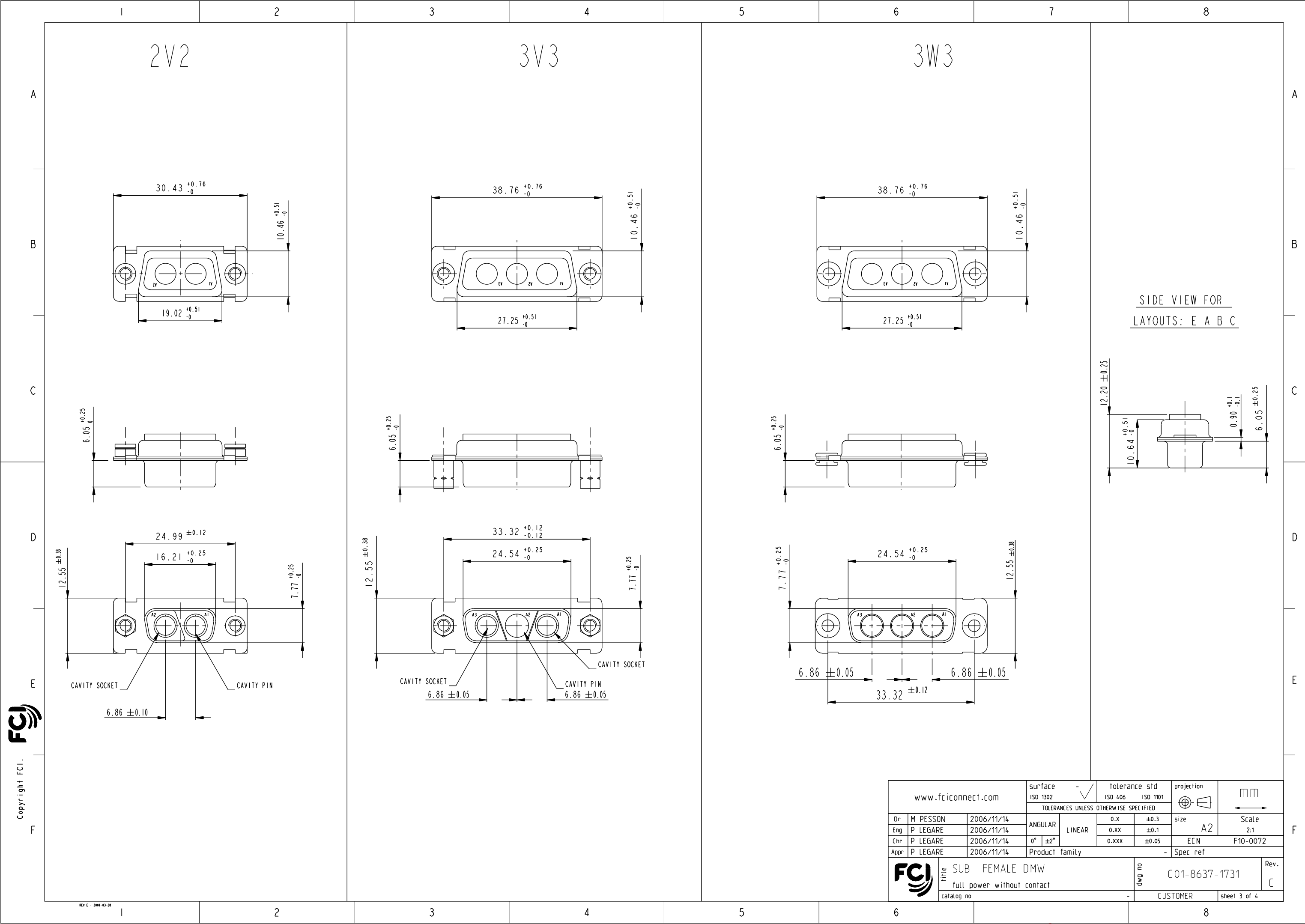
Printed: Oct 28, 2011




PDM: Rev:C

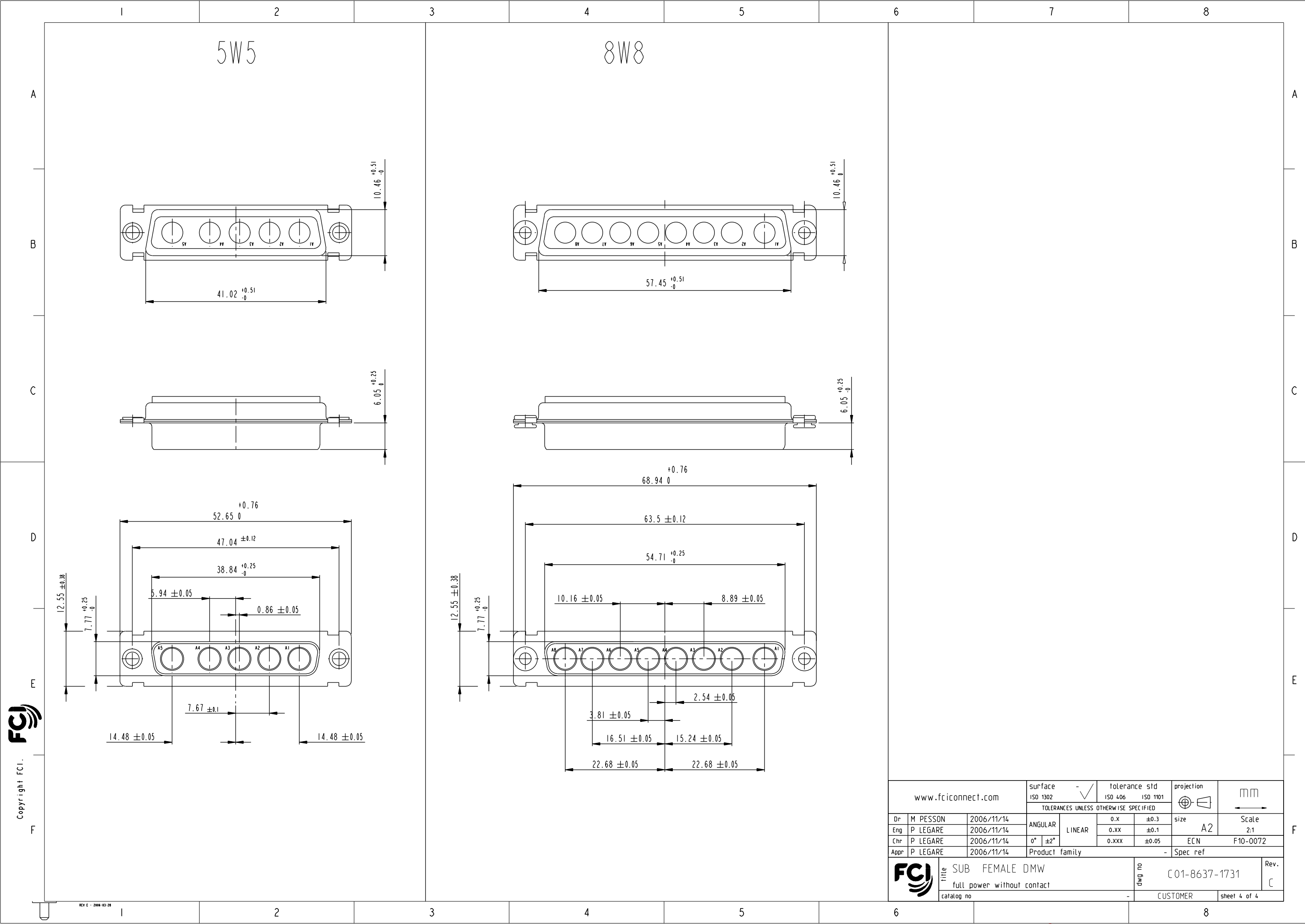
STATUSReleased

Printed: Oct 28, 2011





www.fciconnect.com			surface ISO 1302		- ✓ tolerance std ISO 406 ISO 1101		projection 			
TOLERANCES UNLESS OTHERWISE SPECIFIED										
Dr	M PESSON	2006/11/14	ANGULAR	LINEAR	0.X		±0.3		size A2	Scale 2:1
Eng	P LEGARE	2006/11/14			0.XX		±0.1			
Chr	P LEGARE	2006/11/14	0°	±2°	0.XXX		±0.05		ECN F10-0072	
Appr	P LEGARE	2006/11/14	Product family					-	Spec ref	
			title SUB FEMALE DMW full power without contact				dwg no C01-8637-1731			Rev. C
catalog no			-				CUSTOMER			sheet 3 of 4



Copyright FCI.