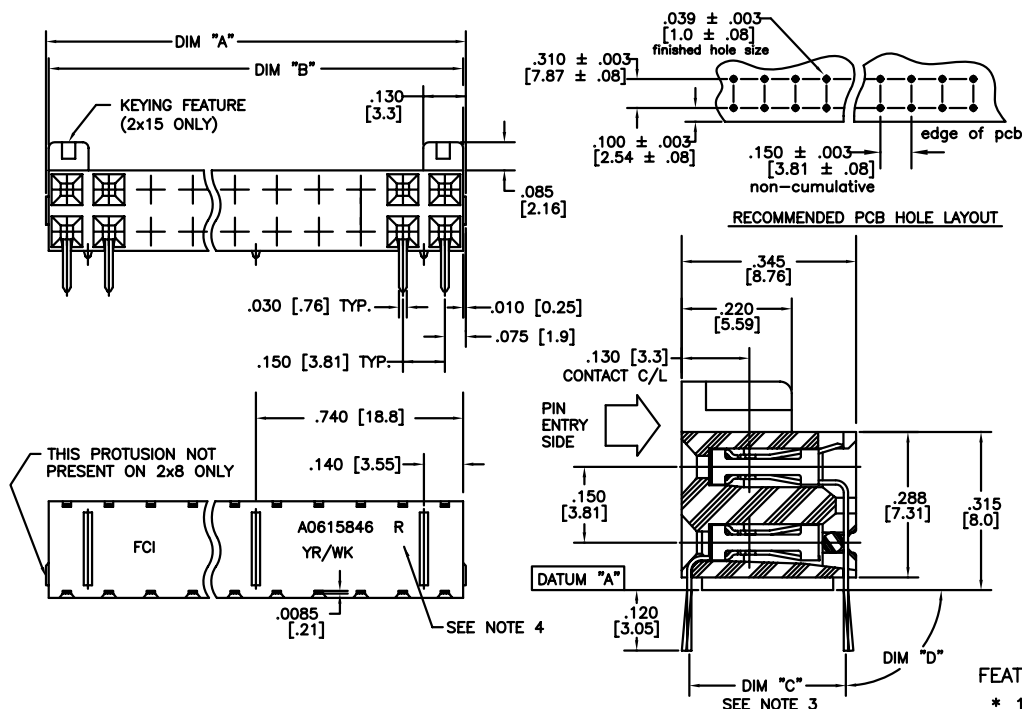


PRODUCT NUMBER
SEE TABLE



CUSTOMER MFG. PROCESS	DIM "C"	DIM "D"
MANUAL INSERTION	.310 [7.87]	90° ± 5°
ROBOTIC INSERTION	.310 [7.87]	86° ± 3°

SPECIFICATIONS-MECHANICAL:

- * INSERTION FORCE - 150 G/CONTACT MAX
- * WITHDRAWAL FORCE: 20 G/CONTACT MAX
- * CONTACT RETENTION: 900 G/CONTACT MIN
- * CONTACT NORMAL FORCE: 120 G/CONTACT MIN
- * DURABILITY - 200 CYCLES MIN.
- * OPERATING TEMPERATURE: -55°C TO +85°C

SPECIFICATIONS-ELECTRICAL:

- * CURRENT RATING(CONTINUOUS):
2x8 AND 2x10: 1 AMP/CONTACT MAX
2x15 : 2 AMP/CONTACT MAX
- * CONTACT RESISTANCE: 20 MILLIOHMS MAX
- * INSULATION RESISTANCE: 5000 MEGOHMS MIN
- * DIELECTRIC WITHSTAND VOLTAGE: 1000V RMS

FEATURES:

- * 16, 20 OR 30 CONTACTS - SIDE ENTRY
- * END STACKABLE
- * BIFURCATED CONTACT DESIGN (N/S ORIENTATION)
- * SELECTIVELY PLATED GOLD CONTACT
- * Ni UNDERPLATE SUITABLE FOR NO-CLEAN OPERATION
- * SnPb OR Sn PLATED CONTACT LEADS FOR SOLDERABILITY
- * ANTI-SHORTING STRIP TO GUARANTEE AGAINST SHORTING THE TWO ROWS.
- * POLARIZED KEYING FEATURES (2x15 ONLY)
- * INTENDED FOR USE ON .062/1.57 THICK PCB
- * INTENDED FOR USE ON .025/0.64 SQUARE PINS

mat'l. code				surface	tolerance	projection	product family
SEE NOTE 1				✓			NORCON
ltr	ecn no	dr	date	tolerances unless otherwise specified			title
D	v05-0066	HTB	3/7/05	angles	linear	INCH/MM	PCB MOUNTED RECEPTACLES
E	v05-0915	HTB	9/28/05		.xxx±.005/.xx±.13	scale N.T.S.	CBR07 DR .150" [3.81] GRID
F	v05-1155	HTB	12/27/05		0°±0.5°		dwg no
G	v06-0376	HTB	4/18/06	dr	T. BREWBAKER	3/7/05	sheet 1 of 2 size
				engr	T. BREWBAKER	3/7/05	54312
				chr	T. BREWBAKER	3/7/05	A3
				appd	T. BREWBAKER	3/7/05	type
sheet	revision	G	G				Product Customer Drawing
index	sheet	1	2				

PRODUCT NUMBER	ENG. CODE	DESCRIPTION	PACK TYPE QTY/CARTON	TAIL STYLE	DIM "A"	DIM "B"	NOTES	
F0738270	CBR07A016S	16 POS.(2x8)	TUBE — 420	MANUAL	1.200/30.48	1.180/29.97	—	OBSOLETE
A0379041	CBR07A020Q	20 POS.(2x10)	GPAX — 5600	ROBOTIC	1.500/38.10	1.480/37.59	—	OBSOLETE
A0379041LF		20 POS.(2x10)	GPAX — 5600	ROBOTIC	1.500/38.10	1.480/37.59	NOTES 5 & 6	OBSOLETE
AT379041	CBR07A020Q	20 POS.(2x10)	TUBE — 1440	MANUAL	1.500/38.10	1.480/37.59	—	
AT379041LF	—	20 POS.(2x10)	TUBE — 1440	MANUAL	1.500/38.10	1.480/37.59	NOTES 5 & 6	
A0615846	CBR07A030QS1	30 POS.(2x15)	GPAX — 1950	ROBOTIC	2.250/57.15	2.230/56.64	—	OBSOLETE
AT615846	CBR07A030QS1	30 POS.(2x15)	TRAY — 400	MANUAL	2.250/57.15	2.230/56.64	—	OBSOLETE

NOTES:

- ①. HOUSING MATERIAL: PBT, GLASS FIBER REINFORCED, FLAME RETARDENT PER UL 94V-0, COLOR: BLACK.
TERMINAL MATERIAL: CA510 ALLOY
CONTACT FINISH: 50u" / 1.27u Au
CONTACT UNDERPLATE: 100u" / 2.54u Ni
SOLDER TAIL FINISH: 100u" / 2.54u SnPb
LF SOLDER TAIL FINISH: 100u" / 2.54u Sn
OVERALL UNDERPLATE: 20u" / 0.51u Ni
2. PACKAGED IN ANTI-STATIC TRAYS, TUBES OR GPAX.
- ③. FOR ROBOTIC INSERTION DIM "C" IS TO BE MEASURED IN LINE WITH DATUM "A".
FOR MANUAL INSERTION DIM "C" SHALL BE MEASURED AT TERMINAL TIP ENDS.
- ④. CONNECTORS WITH TERMINALS FORMED FOR ROBOTIC INSERTION WILL HAVE AN "R" AFTER THE PART NUMBER.
- ⑤. PART NUMBERS WITH AN LF SUFFIX MEET EUROPEAN UNION DIRECTIVES AND OTHER COUNTRY REGULATIONS AS DESCRIBED IN GS-22-008.
- ⑥. THE HOUSING WILL WITHSTAND EXPOSURE TO 260° C PEAK TEMPERATURE FOR 10 SECONDS IN A WAVE SOLDER APPLICATION WITH A .062" [1.57mm] THICK CIRCUIT BOARD.

mat'l. code SEE NOTE 1				surface <input checked="" type="checkbox"/> tolerance		projection		product family NORCON	
lfr	ecn no	dr	date	tolerances unless otherwise specified		INCH/MM		title	
G				angles	linear .000±.005/.000±.13			PCB MOUNTED RECEPTACLES	
				0°±0.5°		scale N.T.S.		CBR07 DR .150" [3.81] GRID	
				dr	T. BREWBAKER 3/7/05			dwg no	
				engr	T. BREWBAKER 3/7/05			sheet 2 of 2 size	
				chr	T. BREWBAKER 3/7/05			54312 A3	
				appd	T. BREWBAKER 3/7/05			type Product Customer Drawing	
sheet	revision								
index	sheet								